

REVISIONS	BY
15100	N.F.
16341	L.V.

WINDOW and DOOR PERFORMANCE DATA	
U-VALUE / SHGC / STC	
① SINGLE HUNG UNIT	U-VALUE = 0.28 SHGC = 0.22 STC = 32
② SLIDER UNIT	U-VALUE = 0.28 SHGC = 0.22 STC = 32
③ AWNING UNIT	U-VALUE = 0.27 SHGC = 0.18 STC = 32
④ SLIDING PATIO DOOR	U-VALUE = 0.28 SHGC = 0.23 STC = 32

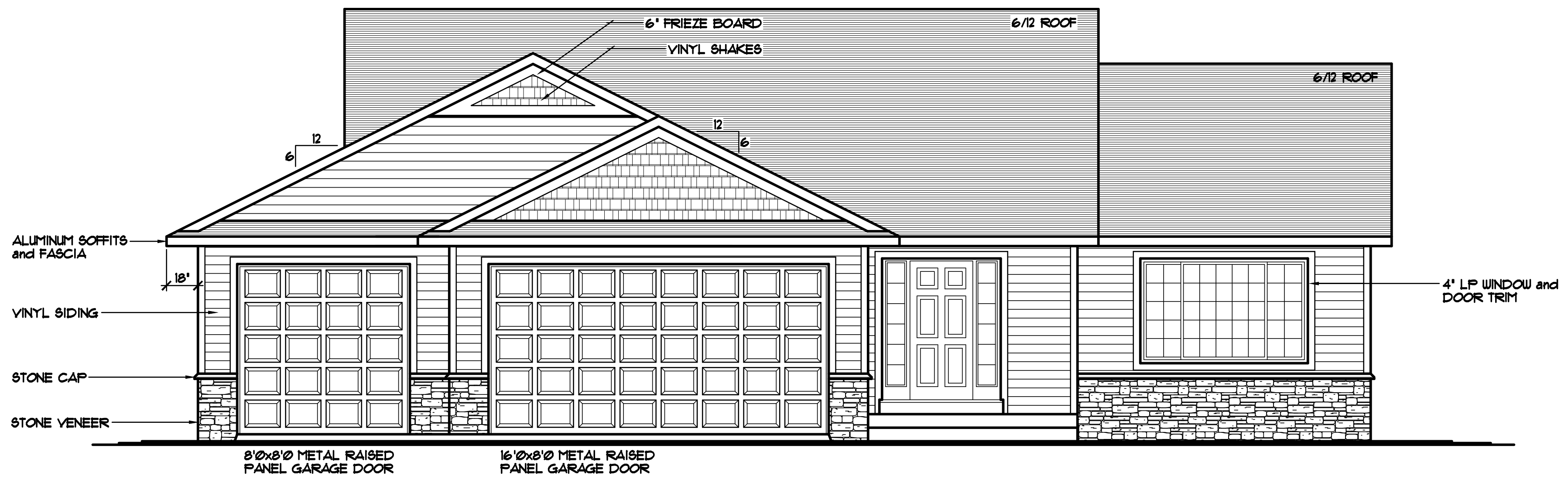
HOUSE INTERIOR VOLUME CALCULATION
 12062 CUBIC FEET (MAIN LEVEL VOLUME)
 2832 CUBIC FEET (FLOOR TRUSS SPACE VOLUME)
 11990 CUBIC FEET (BASEMENT VOLUME)
 26784 CUBIC FEET (TOTAL INTERIOR VOLUME)

NOTE III
 8'-1 1/8" PLATE
 HEIGHT @ ENTIRE
 MAIN LEVEL (TYP.)

NOTE III
 TOP OF R.O. FOR ALL
 WINDOWS TO BE
 6'-10 1/2" FROM
 SUB FLOOR (UN.O.)

NOTE III
 PROVIDE STANDARD
 ENERGY HEEL @ ALL
 ROOF TRUSSES (TYP.)

- JELD WEN WINDOWS SPEC'D.
- WINDOWS w/GRIDS WHERE SHOWN
- VINYL SIDING WHERE SHOWN
- VINYL SIDING @ FRONT, SIDES, & REAR
- ALUMINUM SOFFITS & FASCIA
- STONE VENEER WHERE SHOWN
- CENTRAL VACUUM



FRONT ELEVATION 1/4" = 1'-0"
 1456 SQ. FT. MAIN LEVEL

THE:
LISA II PLAN
 11447 KILLARNEY DR.
 CHISAGO CITY, MN 55013

© COPYRIGHT 2014-2017 NOTICE, ALL RIGHTS RESERVED
 CROIX DESIGN and DRAFTING, INC.

SPECIAL NOTICE:
 CROIX DESIGN and DRAFTING, INC. ACCEPTS NO RESPONSIBILITY FOR ERRORS AND/OR OMISSIONS. THESE DRAWINGS ARE DESIGN CONCEPT ONLY. EVERY EFFORT HAS BEEN MADE TO DESIGN ACCURATELY. THE OWNER, GENERAL CONTRACTOR, SUB-CONTRACTORS, AND SUPPLIERS MUST CHECK ALL DETAILS AND DIMENSIONS AND BE RESPONSIBLE FOR ANY CHANGES OR ADJUSTMENTS REQUIRED DURING ACTUAL CONSTRUCTION. NO REPRESENTATION IS MADE OR IMPLIED FOR ACCURACY.

© COPYRIGHT NOTICE, ALL RIGHTS RESERVED
 THESE ARCHITECTURAL PLANS AND ALL RELATED WORKS ARE PROTECTED BY UNITED STATES COPYRIGHT LAWS, AND MAY NOT BE REPRODUCED OR TRANSMITTED IN ANY FORM OR BY ANY MEANS, WITHOUT THE EXPRESS WRITTEN PERMISSION OF CROIX DESIGN and DRAFTING, INC. CROIX DESIGN and DRAFTING, INC.

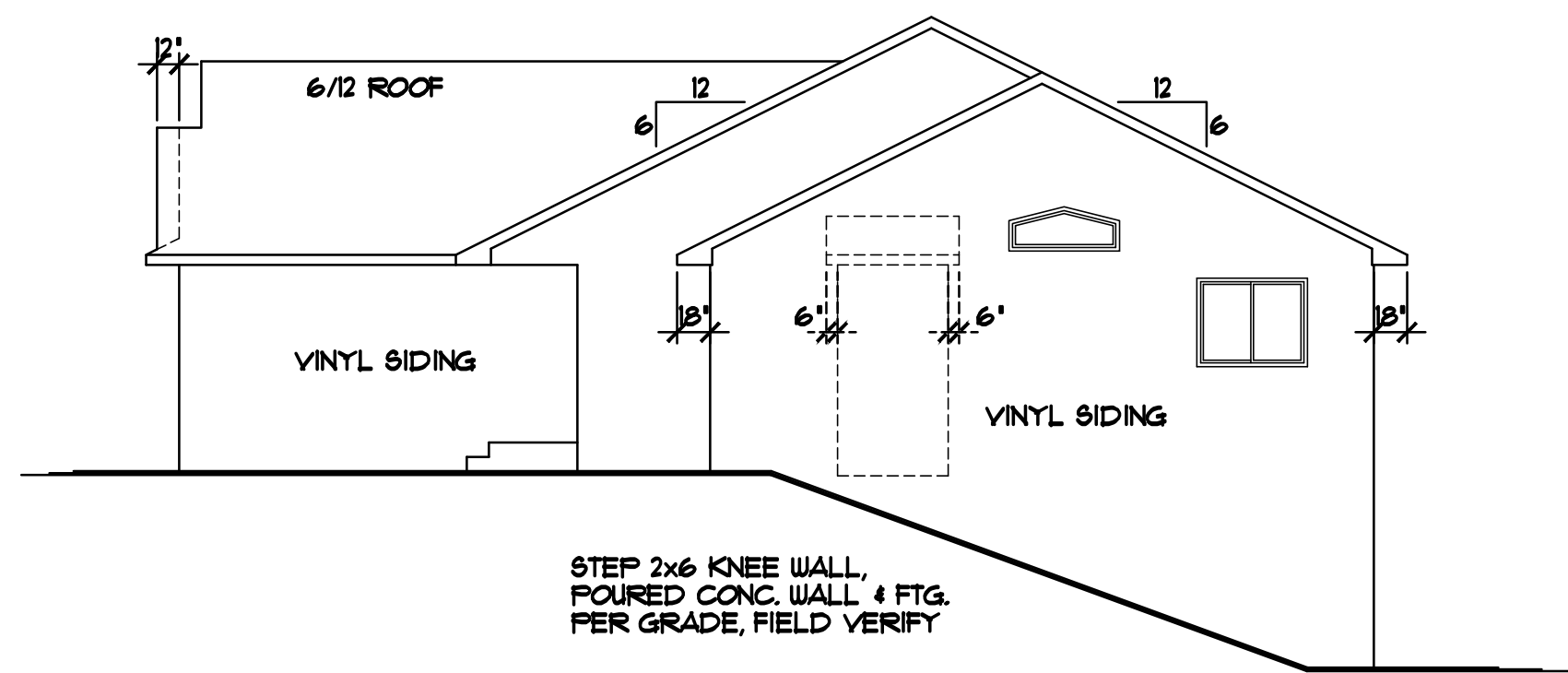
DESIGN and DRAFTING BY:

ARCHITECTURAL DESIGN and DRAFTING SERVICE •
 HOME PLAN SERVICE • CUSTOM HOMES • REMODELING •
 PHONE: 763.757.5997 • ANDOVER, MINNESOTA •
 WWW.CROIXDESIGN.COM

BUILT BY:

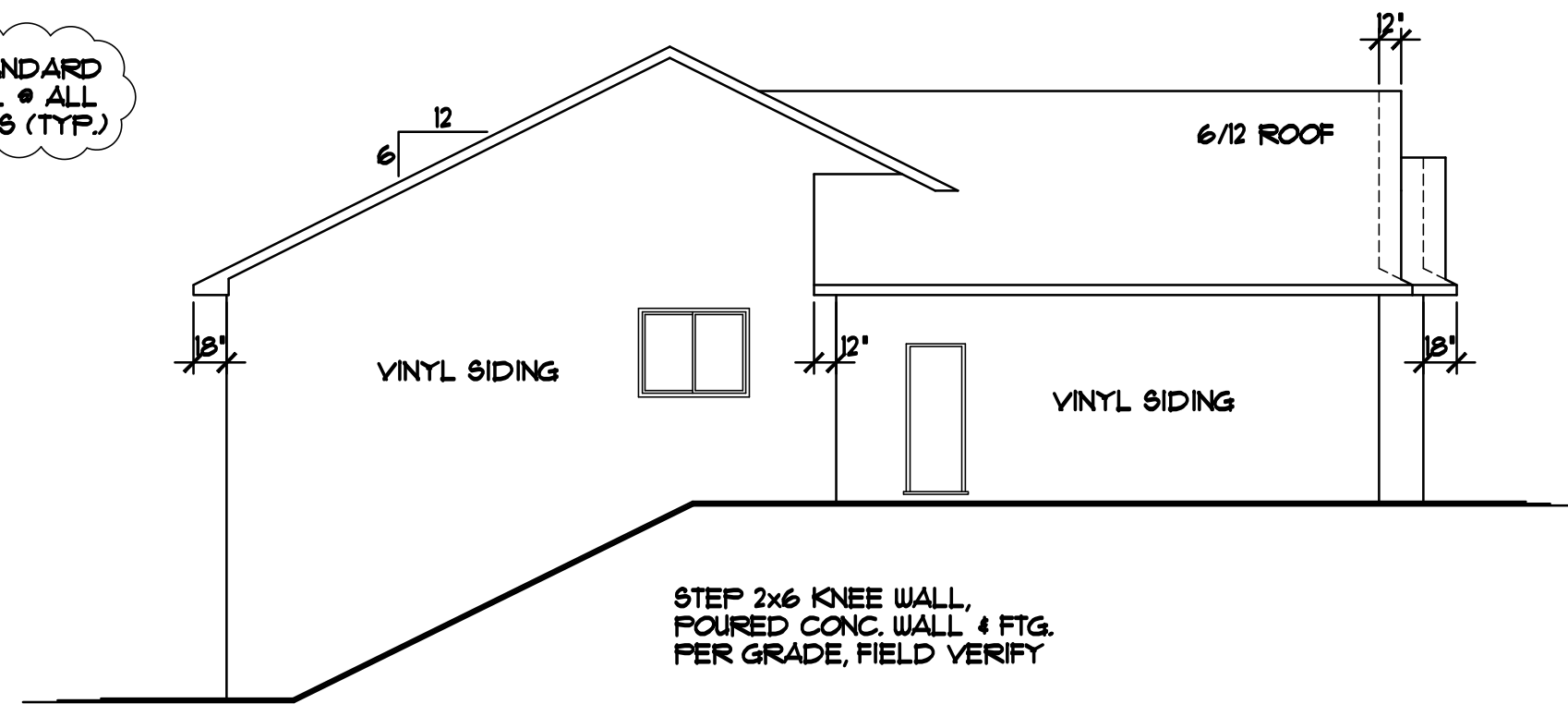
ELEVATE BUILDERS, LLC
 P.O. BOX 714
 FOREST LAKE, MN 55025

DRAWN	
BY	
CHECKED	XX
DATE	05/24/2017
SCALE	AS NOTED
CADD FILE #	17201-L
SHEET	1 of 7

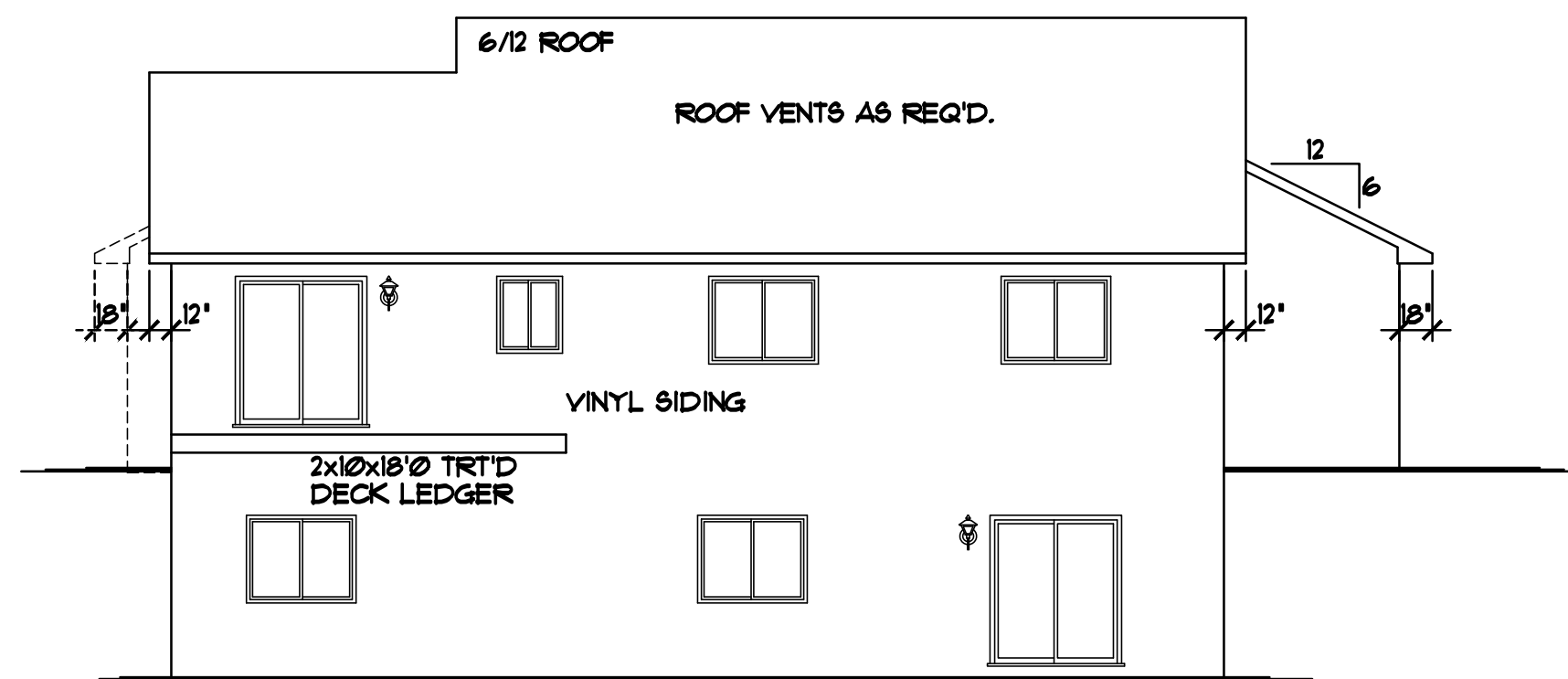


RIGHT ELEVATION 1/8"=1'-0"

NOTE III
PROVIDE STANDARD
ENERGY HEEL @ ALL
ROOF TRUSSES (TYP.)



LEFT ELEVATION 1/8"=1'-0"



REAR ELEVATION 1/8"=1'-0"

SPECIAL NOTICE:

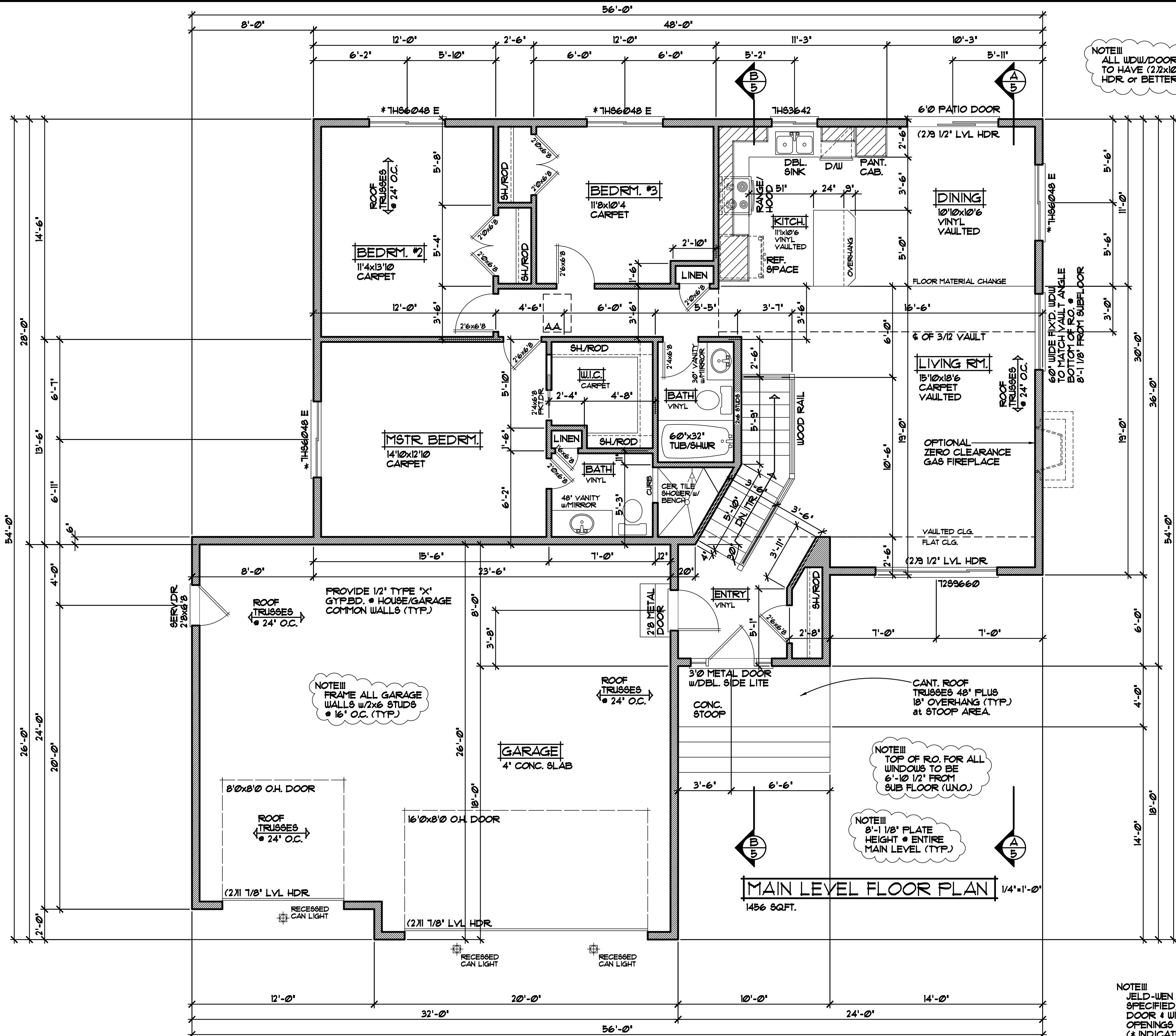
CROIX DESIGN AND DRAFTING, INC. ACCEPTS NO RESPONSIBILITY FOR ERRORS AND/OR OMISSIONS. THESE DRAWINGS ARE DESIGN CONCEPT ONLY. EVERY EFFORT HAS BEEN MADE TO PREVENT ERRORS, BUT THE USER MUST CHECK ALL DIMENSIONS AND CONDITIONS OF THE PROJECT AND BE RESPONSIBLE FOR ANY CHANGES OR ADJUSTMENTS REQUIRED DURING ACTUAL CONSTRUCTION. NO REPRESENTATION IS MADE OR IMPLIED FOR ACCURACY.

OFFICE: 763.757.5997
FAX: 763.757.4383
ANDOVER, MINNESOTA
WWW.CROIXDESIGN.COM



BUILT BY:
ELEVATE BUILDERS, LLC

SHEET
2
of 7
CADD FILE #
17201



NOTE II
ALL WDW/DOOR OPENINGS
TO HAVE (2) 2x10 2 GRADE
HDR OR BETTER (UNO.)

NOTE III
FRAME ALL GARAGE
WALLS w/2x6 STUDS
@ 16' O.C. (TYP.)

NOTE III
TOP OF RO. FOR ALL
WINDOWS TO BE
6'-10 1/2" FROM
SUB FLOOR (UNO.)

NOTE III
8'-1 1/8" PLATE
HEIGHT @ ENTIRE
MAIN LEVEL (TYP.)

NOTE III
JELD-WEN VINYL WINDOWS
SPECIFIED. VERIFY ALL
DOOR & WINDOW ROUGH
OPENINGS w/SUPPLIER
(* INDICATES SASH LIMITER
REQUIRED)

MAIN LEVEL FLOOR PLAN 1/4" = 1'-0"
1456 SQ.FT.

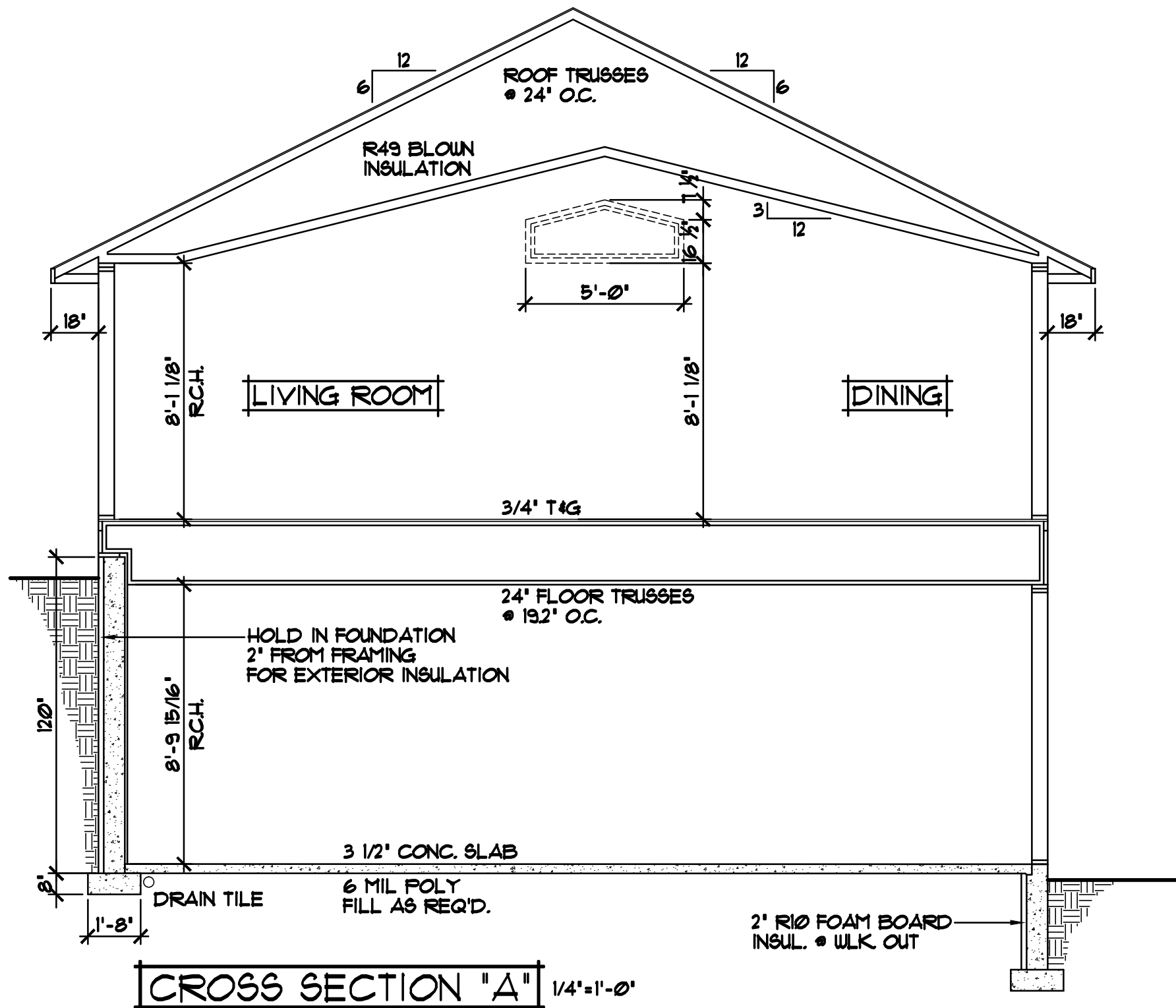
SPECIAL NOTICE:
CROIX DESIGN AND DRAFTING, INC. ACCEPTS NO RESPONSIBILITY FOR ERRORS AND/OR OMISSIONS. THESE DRAWINGS ARE DESIGN CONCEPT ONLY. EVERY EFFORT HAS BEEN MADE TO PREVENT ERRORS AND OMISSIONS. THE USER SHALL BE RESPONSIBLE FOR VERIFYING ALL DIMENSIONS AND CONDITIONS. THE USER SHALL BE RESPONSIBLE FOR OBTAINING ALL NECESSARY PERMITS AND APPROVALS. THE USER SHALL BE RESPONSIBLE FOR ANY CHANGES OR ADJUSTMENTS REQUIRED DURING ACTUAL CONSTRUCTION. NO REPRESENTATION IS MADE OR IMPLIED FOR ACCURACY.

OFFICE: 763.757.5997
FAX: 763.757.4383
ANOKER, MINNESOTA
WWW.CROIXDESIGN.COM



BUILT BY:
ELEVATE BUILDERS, LLC

SHEET
4
of 7
CADD FILE #
11201



- ROOF CONSTRUCTION:**
- PREMANUFACTURED ROOF TRUSSES - ENGINEERED BY SUPPLIER - SLOPES VARY - SEE PLAN
 - R49 BLOWN FIBERGLASS INSULATION
 - 1/150 ROOF VENT AT SOFFITS, 1/150 VENT AT RIDGE
 - AIR CHUTE AT EACH TRUSS SPACE
 - 1/2\"/>

- SOFFIT / FASCIA:**
- 2x6 SUB-FASCIA
 - MAINTENANCE FREE FASCIA COVER
 - MAINTENANCE FREE VENTED SOFFIT

- WALL CONSTRUCTION:**
- HOUSE WRAP
 - 1/16\"/>

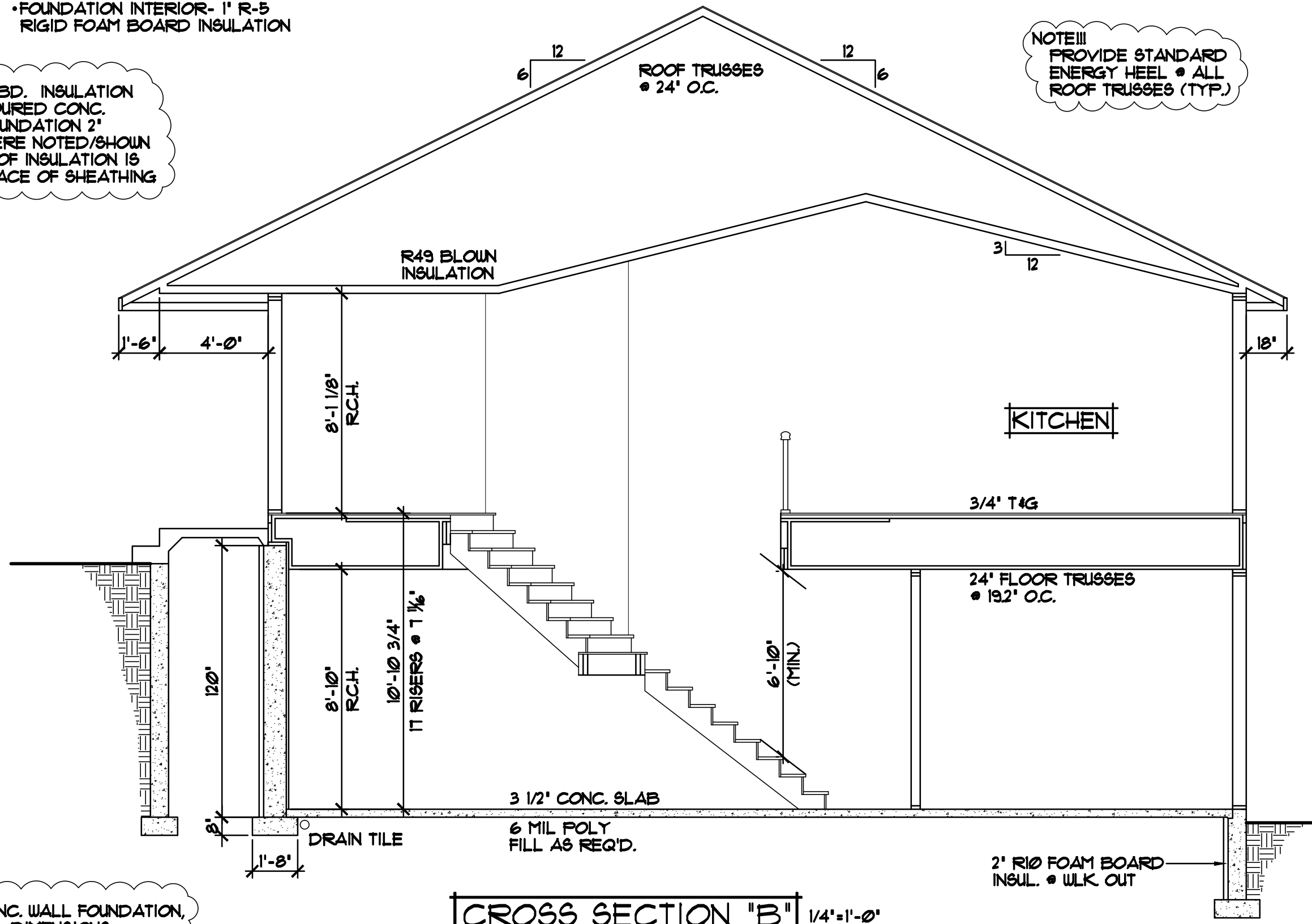
- RIM AREA CONSTRUCTION:**
- CLOSED CELL SPRAYED FOAM INSUL. R20 (MINIMUM) • RIM AREA AND R30 (MINIMUM) • CANTS.

- WALL CONSTRUCTION:**
- SIMILAR TO ABOVE

- SILL CONSTRUCTION:**
- 2x8 SILL PLATE & SEALER (2x6 PLATE • WALKOUT AREAS)
 - 1/2\"/>

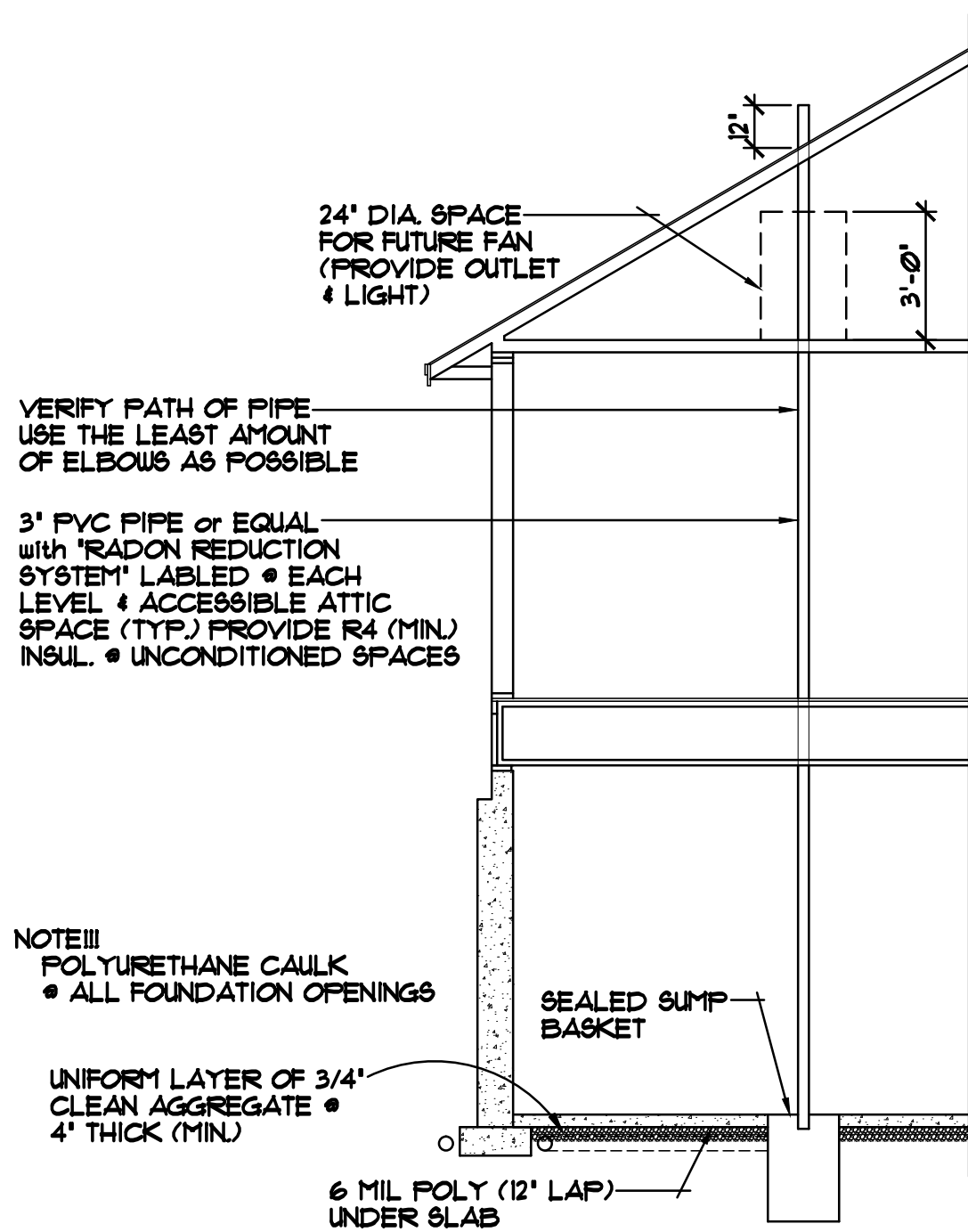
- FOUNDATION INSULATION:**
- FOUNDATION EXTERIOR- 2\"/>

NOTE!!!
 PROVIDE 2\"/>



NOTE!!!
 PROVIDE STANDARD ENERGY HEEL • ALL ROOF TRUSSES (TYP.)

NOTE!!!
 POURED CONC. WALL FOUNDATION, VERIFY WALL DIMENSIONS w/FOUNDATION CONTRACTOR



ALTERNATE METHOD FOR PASSIVE RADON MITIGATION SYSTEM

SPECIAL NOTICE:
 CROIX DESIGN AND DRAFTING, INC. ACCEPTS NO RESPONSIBILITY FOR ERRORS AND/OR OMISSIONS. THESE DRAWINGS ARE DESIGN CONCEPT ONLY. EVERY EFFORT HAS BEEN MADE TO PREVENT AND CORRECT ANY ERRORS AND OMISSIONS. THE USER SHALL BE RESPONSIBLE FOR VERIFYING ALL DIMENSIONS AND BE RESPONSIBLE FOR ANY CHANGES OR ADJUSTMENTS REQUIRED DURING ACTUAL CONSTRUCTION. NO REPRESENTATION IS MADE OR IMPLIED FOR ACCURACY.

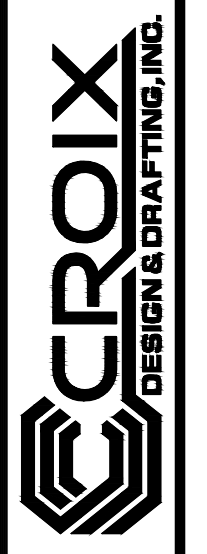
OFFICE: 763.757.5997
 FAX: 763.757.4383
 ANDOVER, MINNESOTA
 WWW.CROIXDESIGN.COM



BUILT BY:
 ELEVATE BUILDERS, LLC

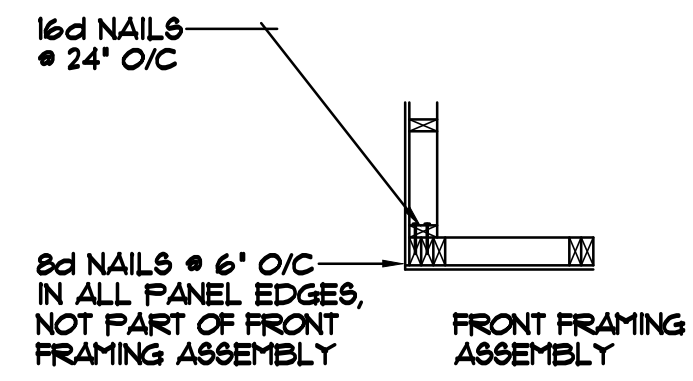
SPECIAL NOTICE:
 CROIX DESIGN AND DRAFTING, INC. ACCEPTS NO RESPONSIBILITY FOR ERRORS AND/OR OMISSIONS. THESE DRAWINGS ARE DESIGN CONCEPT ONLY. EVERY EFFORT HAS BEEN MADE TO PREVENT ERRORS, BUT THE USER MUST CHECK ALL DIMENSIONS AND CONDITIONS BEFORE CONSTRUCTION. THE USER SHALL BE RESPONSIBLE FOR ANY CHANGES OR ADJUSTMENTS REQUIRED DURING ACTUAL CONSTRUCTION. NO REPRESENTATION IS MADE OR IMPLIED FOR ACCURACY.

OFFICE: 763.757.5997
 FAX: 763.757.4383
 ANDOVER, MINNESOTA
 WWW.CROIXDESIGN.COM

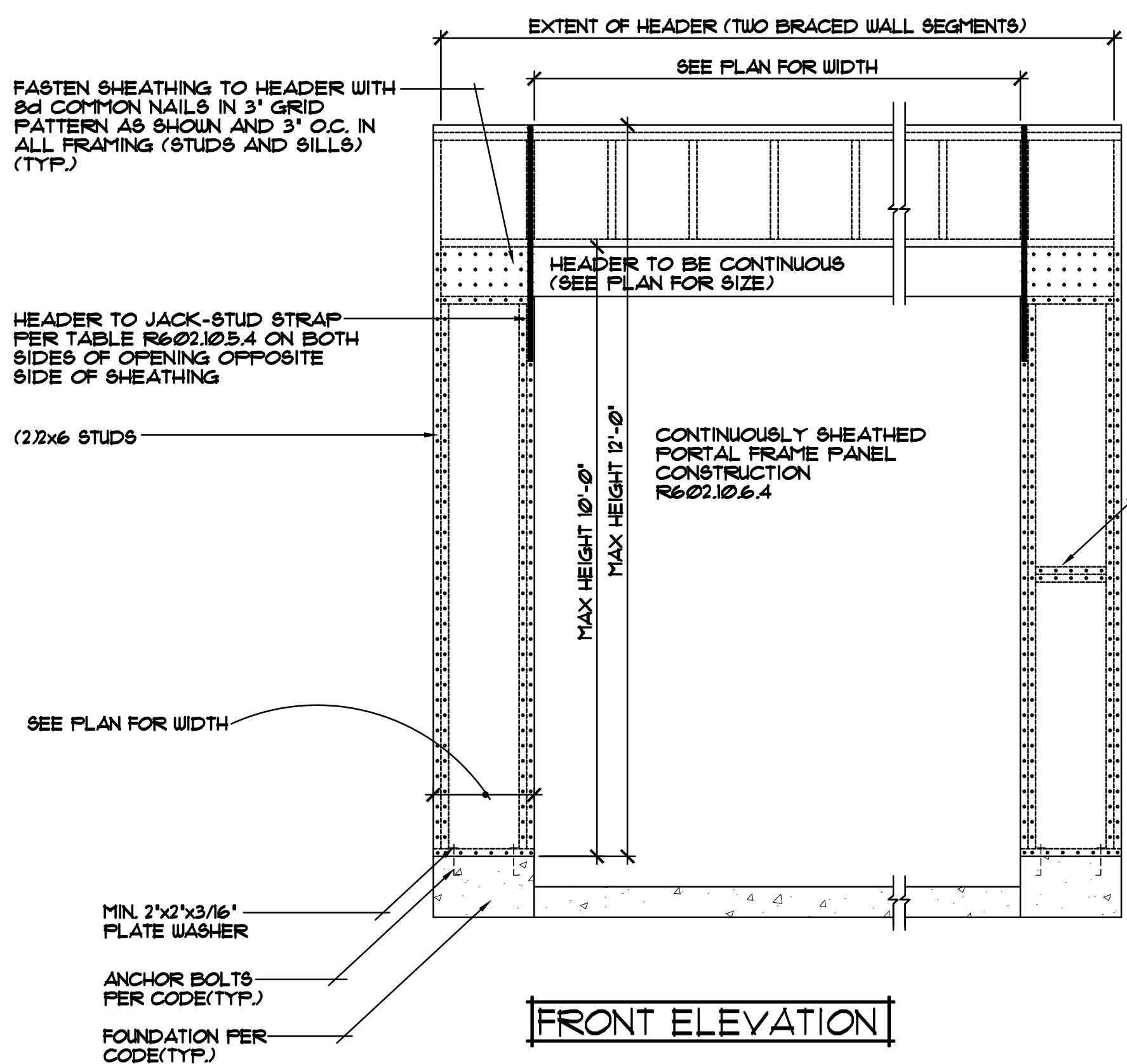


BUILT BY:
ELEVATE BUILDERS, LLC

SHEET
6
 of 7
 CADD FILE #
 17201

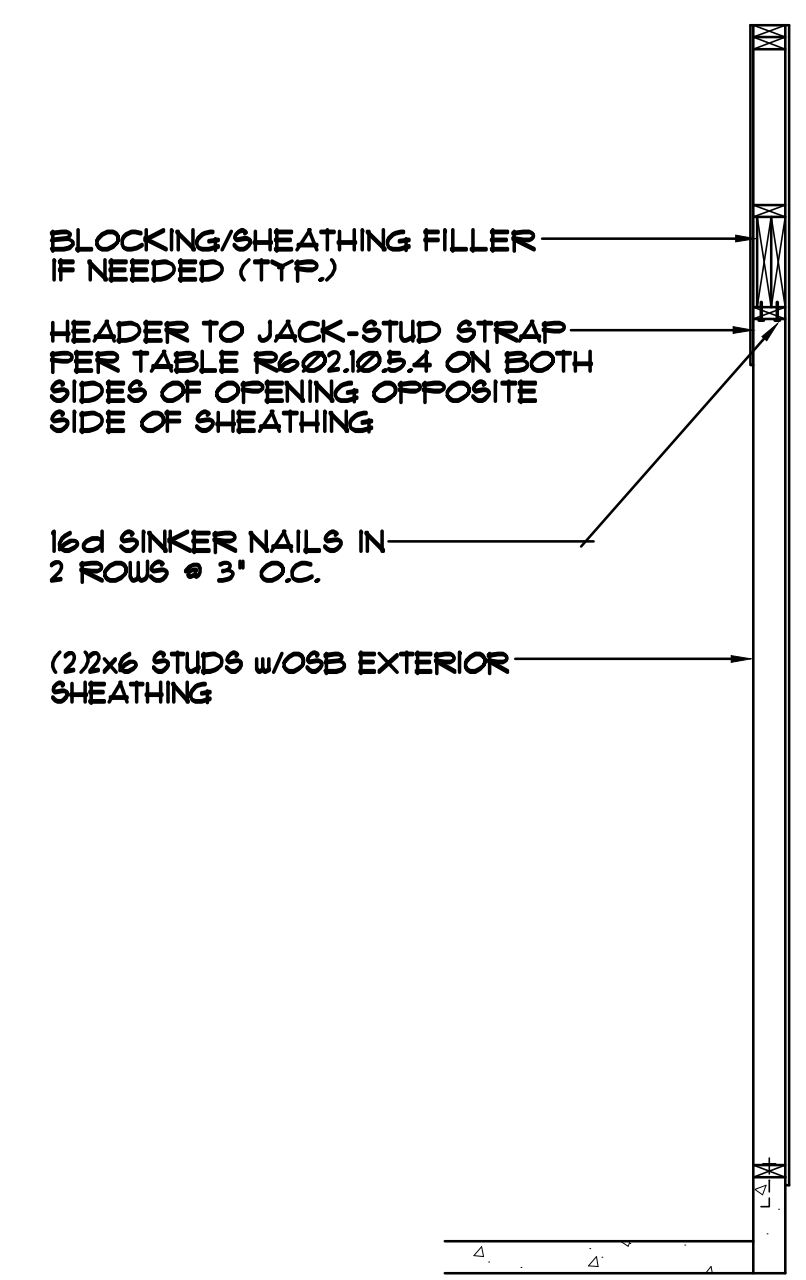


CORNER FRAMING DETAIL

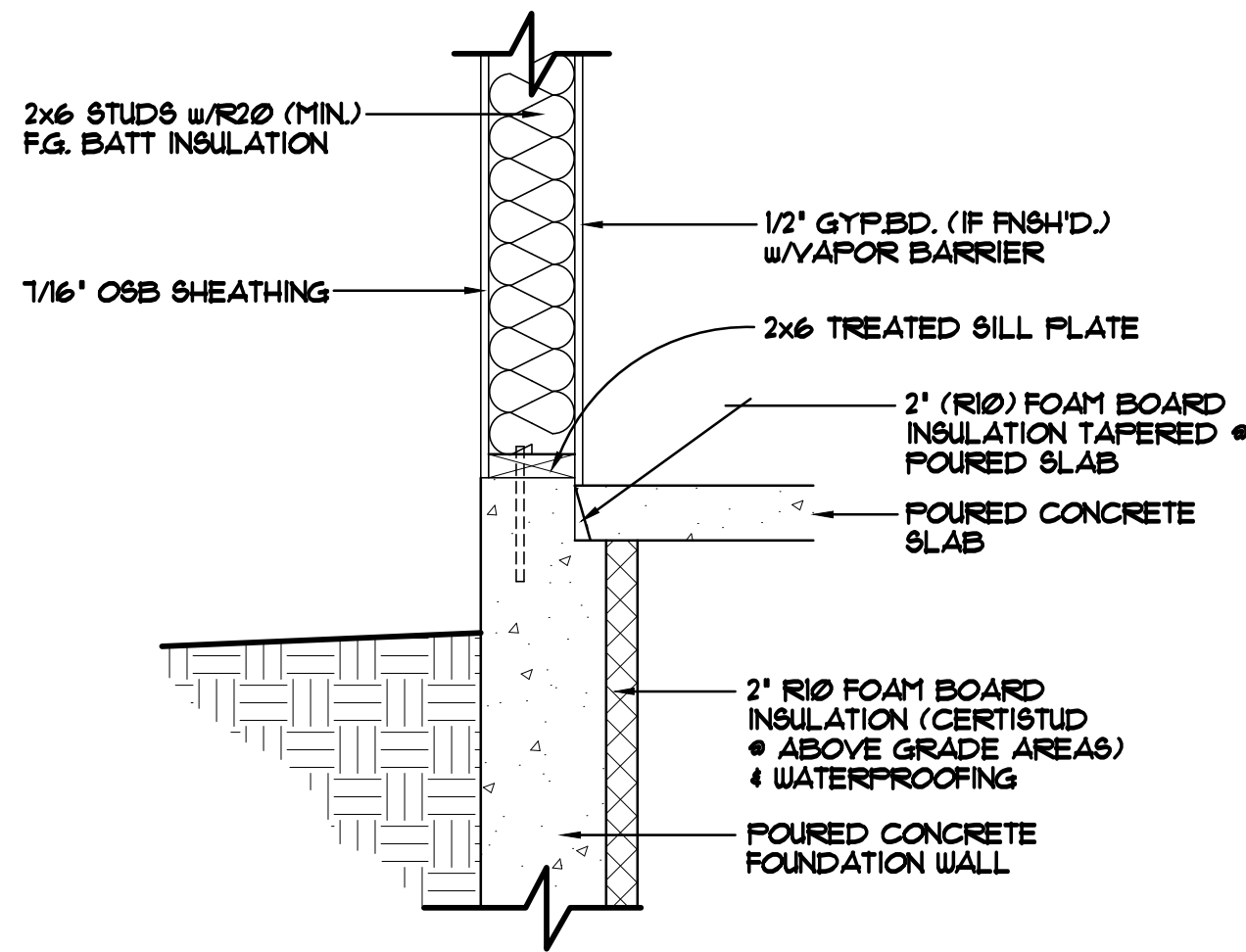


FRONT ELEVATION

CONTINUOUSLY SHEATHED PORTAL FRAME PANEL CONSTRUCTION 1/2"=1'-0"

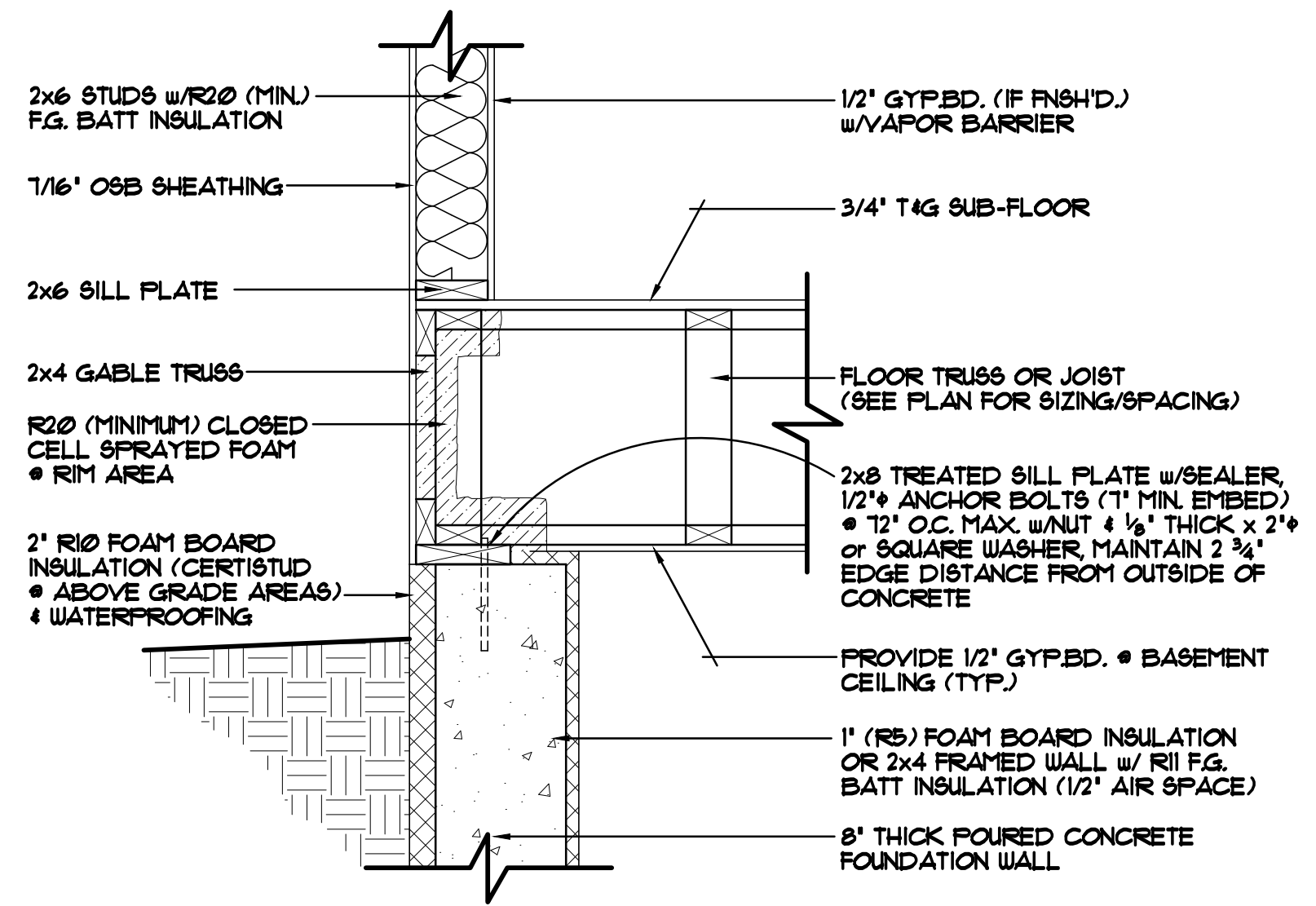


SIDE ELEVATION



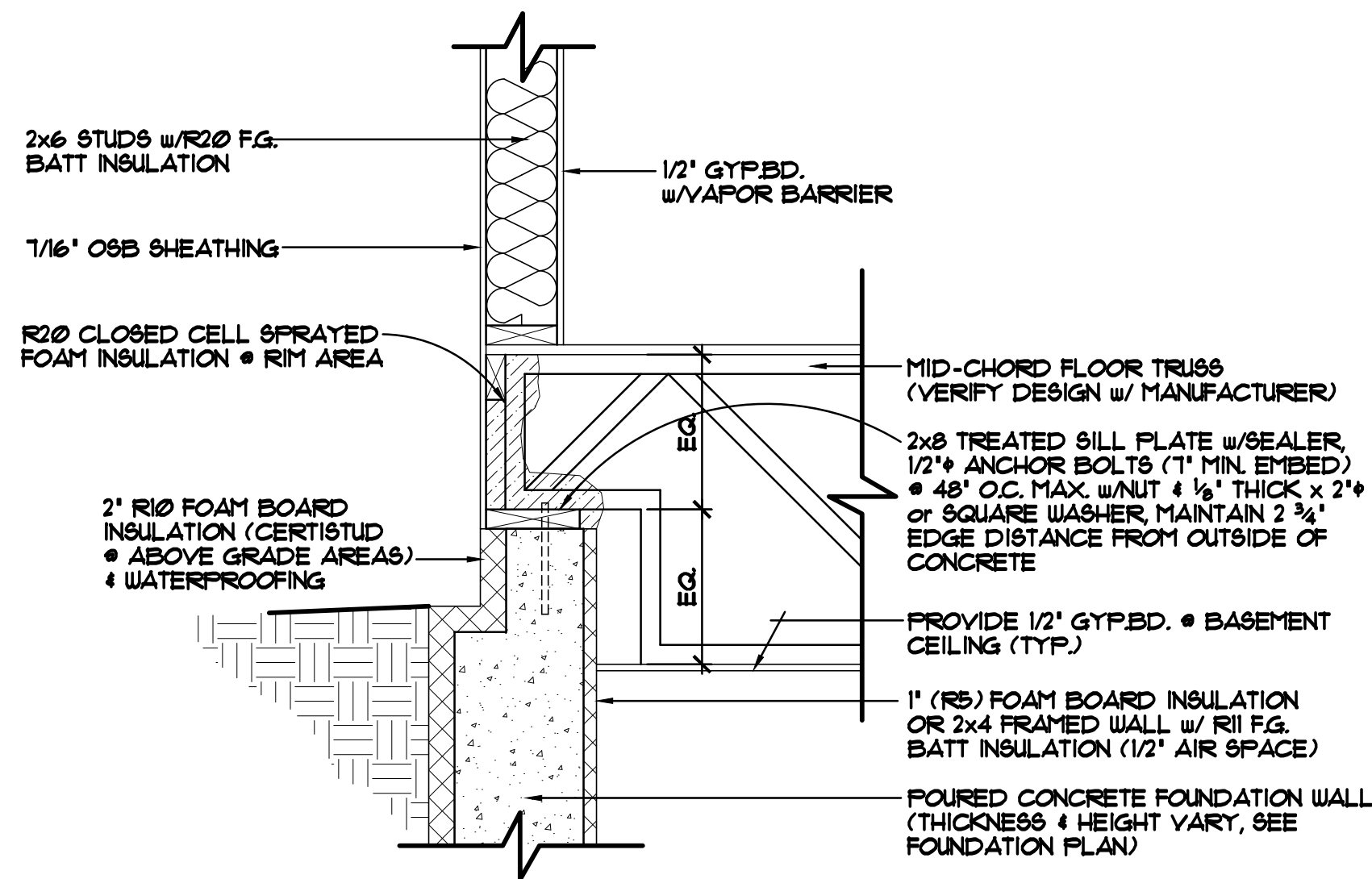
FOUNDATION/RIM AREA DETAIL "A-1" 1'-1'-0"

STANDARD WALKOUT SILL/FOUNDATION AREA
FOUNDATION NOT HELD IN



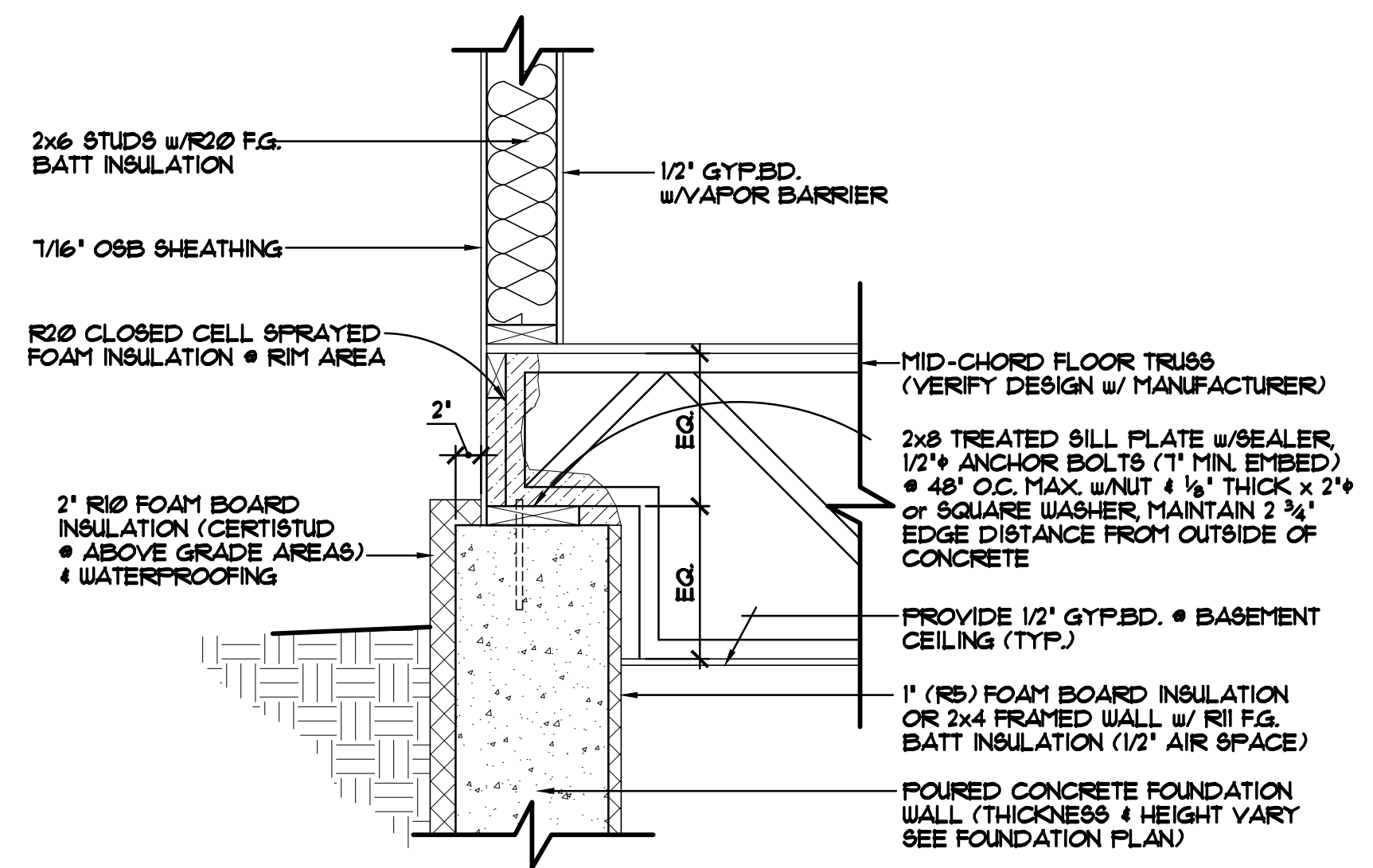
FOUNDATION/RIM AREA DETAIL "A-2" 1'-1'-0"

STANDARD RIM AREA, TRUSSES/JOISTS PARALLEL TO FOUNDATION WALL
FOUNDATION HELD IN 2"



FOUNDATION/RIM AREA DETAIL "A-3" 1'-1'-0"

RIM AREA WITH MID CHORD BEARING TRUSS
FOUNDATION HELD IN 2"
(VERIFY TRUSS DESIGN W/ TRUSS MANUFACTURER)



FOUNDATION/RIM AREA DETAIL "A-4" 1'-1'-0"

RIM AREA WITH MID-CHORD BEARING TRUSSES
FOUNDATION HELD OUT 2" FOR FRONT STOOP BEARING
(VERIFY TRUSS DESIGN W/ TRUSS MANUFACTURER)

SPECIAL NOTICE:
CROIX DESIGN AND DRAFTING, INC. ACCEPTS NO RESPONSIBILITY FOR ERRORS AND/OR OMISSIONS. THESE DRAWINGS ARE DESIGN CONCEPT ONLY. EVERY EFFORT HAS BEEN MADE TO PREPARE THESE DRAWINGS TO THE BEST OF OUR ABILITY. THE USER SHALL CHECK ALL DIMENSIONS AND CONDITIONS AND BE RESPONSIBLE FOR ANY CHANGES OR ADJUSTMENTS REQUIRED DURING ACTUAL CONSTRUCTION. NO REPRESENTATION IS MADE OR IMPLIED FOR ACCURACY.

OFFICE: 763.757.5997
FAX: 763.757.4383
ANDOVER, MINNESOTA
WWW.CROIXDESIGN.COM



BUILT BY:
ELEVATE BUILDERS, LLC