

REVISIONS	BY
15100	N.F.
16341	L.V.
17201	R.B.

SILVERLINE

WINDOW and DOOR PERFORMANCE DATA
U-VALUE / SHGC / STC
•SINGLE HUNG UNIT U-VALUE = 0.29 SHGC = 0.30 STC = 30
•SLIDER UNIT U-VALUE = 0.29 SHGC = 0.30 STC = 30
•FIXED UNIT U-VALUE = 0.27 SHGC = 0.31 STC = 27
•CASEMENT UNIT U-VALUE = 0.27 SHGC = 0.24 STC = 28
•AWNING UNIT U-VALUE = 0.27 SHGC = 0.24 STC = 28
•SLIDING PATIO DOOR U-VALUE = 0.29 SHGC = 0.30 STC = 27

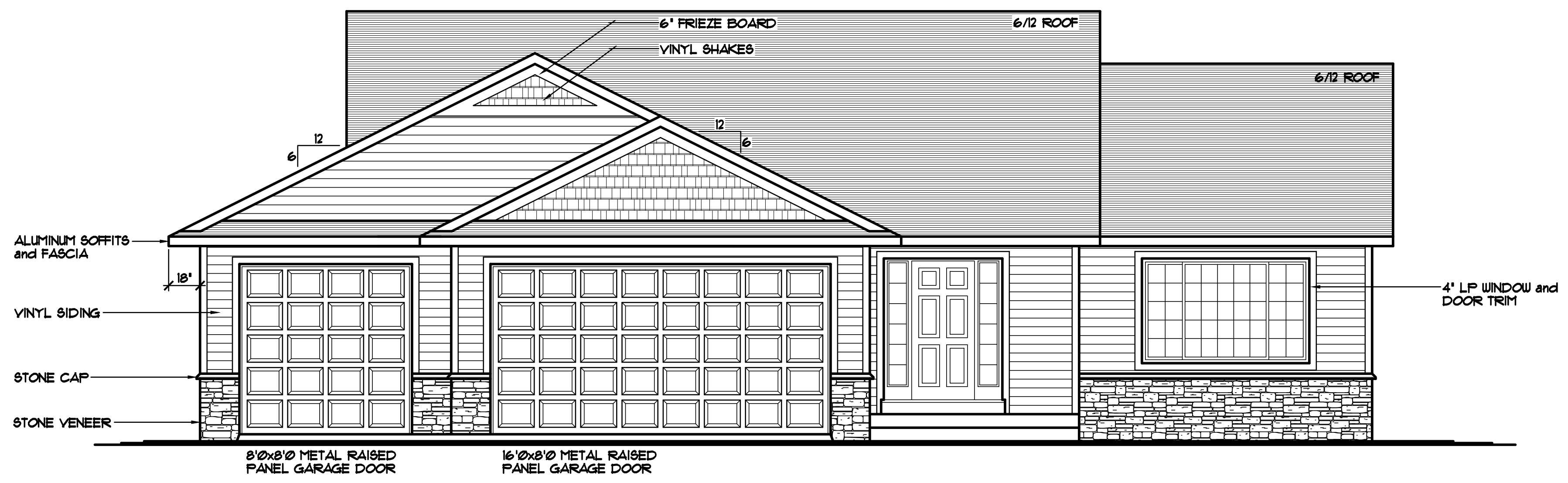
HOUSE INTERIOR VOLUME CALCULATION
 12062 CUBIC FEET (MAIN LEVEL VOLUME)
 2832 CUBIC FEET (FLOOR TRUSS SPACE VOLUME)
 11890 CUBIC FEET (BASEMENT VOLUME)
 26784 CUBIC FEET (TOTAL INTERIOR VOLUME)

NOTE!!!
 8'-1 1/8" PLATE
 HEIGHT @ ENTIRE
 MAIN LEVEL (TYP.)

NOTE!!!
 TOP OF R.O. FOR ALL
 WINDOWS TO BE
 6'-10 1/2" FROM
 SUB FLOOR (U.N.O.)

NOTE!!!
 PROVIDE STANDARD
 ENERGY HEEL @ ALL
 ROOF TRUSSES (TYP.)

- SILVERLINE WINDOWS SPEC'D.
- WINDOWS w/GRIDS WHERE SHOWN
- VINYL SIDING WHERE SHOWN
- VINYL SIDING @ FRONT, SIDES, & REAR
- ALUMINUM SOFFITS & FASCIA
- STONE VENEER WHERE SHOWN



FRONT ELEVATION 1/4" = 1'-0"
 1456 SQ. FT. MAIN LEVEL

THE:
STAN LEE PLAN
 8672 COLE COURT
 INVER GROVE HEIGHTS, MN

© COPYRIGHT 2014-2017 NOTICE, ALL RIGHTS RESERVED
 CROIX DESIGN and DRAFTING, INC.

SPECIAL NOTICE:
 CROIX DESIGN and DRAFTING, INC. ACCEPTS NO RESPONSIBILITY FOR ERRORS AND/OR OMISSIONS. THESE DRAWINGS ARE DESIGN CONCEPT ONLY. EVERY EFFORT HAS BEEN MADE TO DESIGN ACCURATELY. THE OWNER, GENERAL CONTRACTOR, SUB-CONTRACTORS, AND SUPPLIERS MUST CHECK ALL DETAILS AND DIMENSIONS AND BE RESPONSIBLE FOR ANY CHANGES OR ADJUSTMENTS REQUIRED DURING ACTUAL CONSTRUCTION. NO REPRESENTATION IS MADE OR IMPLIED FOR ACCURACY.

© COPYRIGHT NOTICE, ALL RIGHTS RESERVED
 THESE ARCHITECTURAL PLANS AND ALL RELATED WORKS ARE PROTECTED BY UNITED STATES COPYRIGHT LAWS, AND THAT NOT BE REPRODUCED OR TRANSMITTED IN ANY FORM OR BY ANY MEANS, WITH OR WITHOUT THE EXPRESS WRITTEN PERMISSION OF CROIX DESIGN and DRAFTING, INC. CROIX DESIGN and DRAFTING, INC.

DESIGN and DRAFTING BY:

ARCHITECTURAL DESIGN and DRAFTING SERVICE •
 HOME PLAN SERVICE • CUSTOM HOMES • REMODELING •
 PHONE: 763.757.5997 • ANDOVER, MINNESOTA •
 WWW.CROIXDESIGN.COM

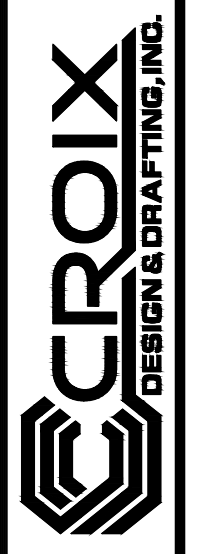
BUILT BY:

ELEVATE BUILDERS, LLC
 P.O. BOX 714
 FOREST LAKE, MN 55025

DRAWN R.B.
CHECKED XX
DATE 09/20/2017
SCALE AS NOTED
CADD FILE # 17327
SHEET 1 OF 7

SPECIAL NOTICE:
 CROIX DESIGN AND DRAFTING, INC. ACCEPTS NO RESPONSIBILITY FOR ERRORS AND/OR OMISSIONS. THESE DRAWINGS ARE DESIGN CONCEPT ONLY. EVERY EFFORT HAS BEEN MADE TO PREVENT ERRORS, BUT THE USER MUST CHECK ALL DIMENSIONS AND CONDITIONS OF THE PROJECT AND VERIFY ALL INFORMATION WITH THE SUPPLIER. THE USER MUST CHECK ALL DIMENSIONS AND CONDITIONS OF THE PROJECT AND VERIFY ALL INFORMATION WITH THE SUPPLIER. THE USER MUST CHECK ALL DIMENSIONS AND CONDITIONS OF THE PROJECT AND VERIFY ALL INFORMATION WITH THE SUPPLIER. THE USER MUST CHECK ALL DIMENSIONS AND CONDITIONS OF THE PROJECT AND VERIFY ALL INFORMATION WITH THE SUPPLIER. NO REPRESENTATION IS MADE OR IMPLIED FOR ACCURACY.

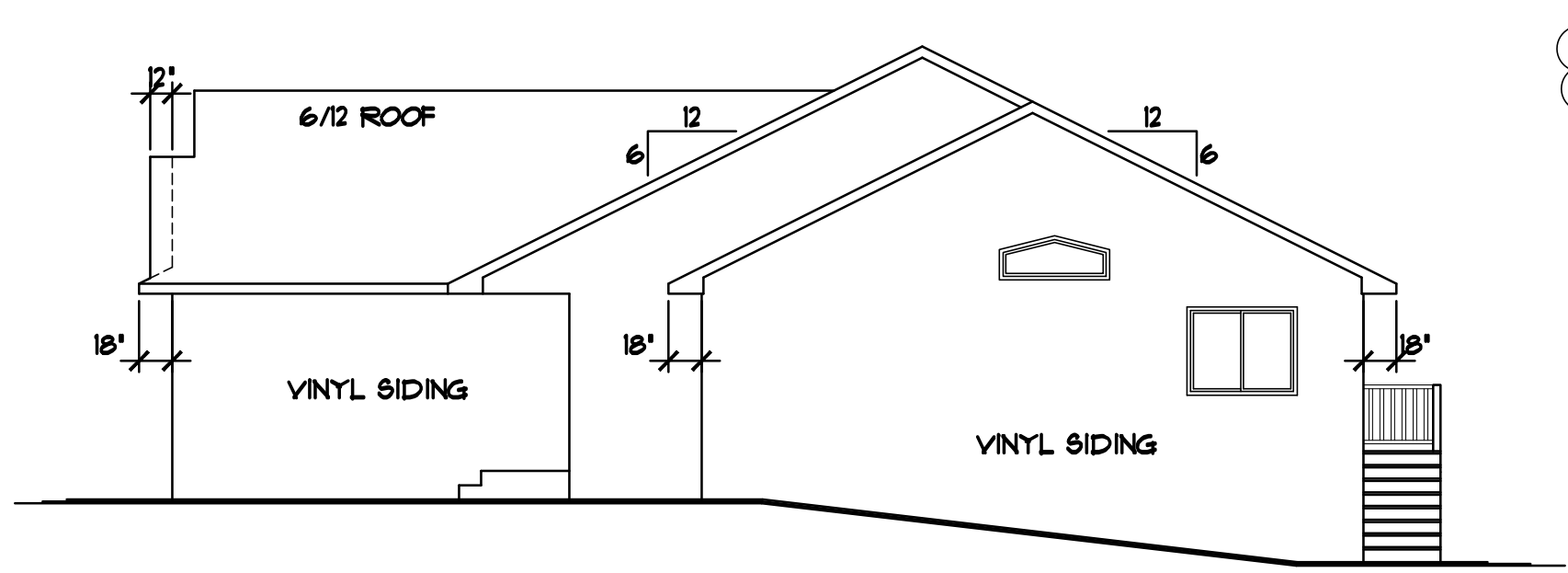
OFFICE: 763.757.5997
 FAX: 763.757.4383
 ANDOVER, MINNESOTA
 WWW.CROIXDESIGN.COM



BUILT BY:
ELEVATE BUILDERS, LLC

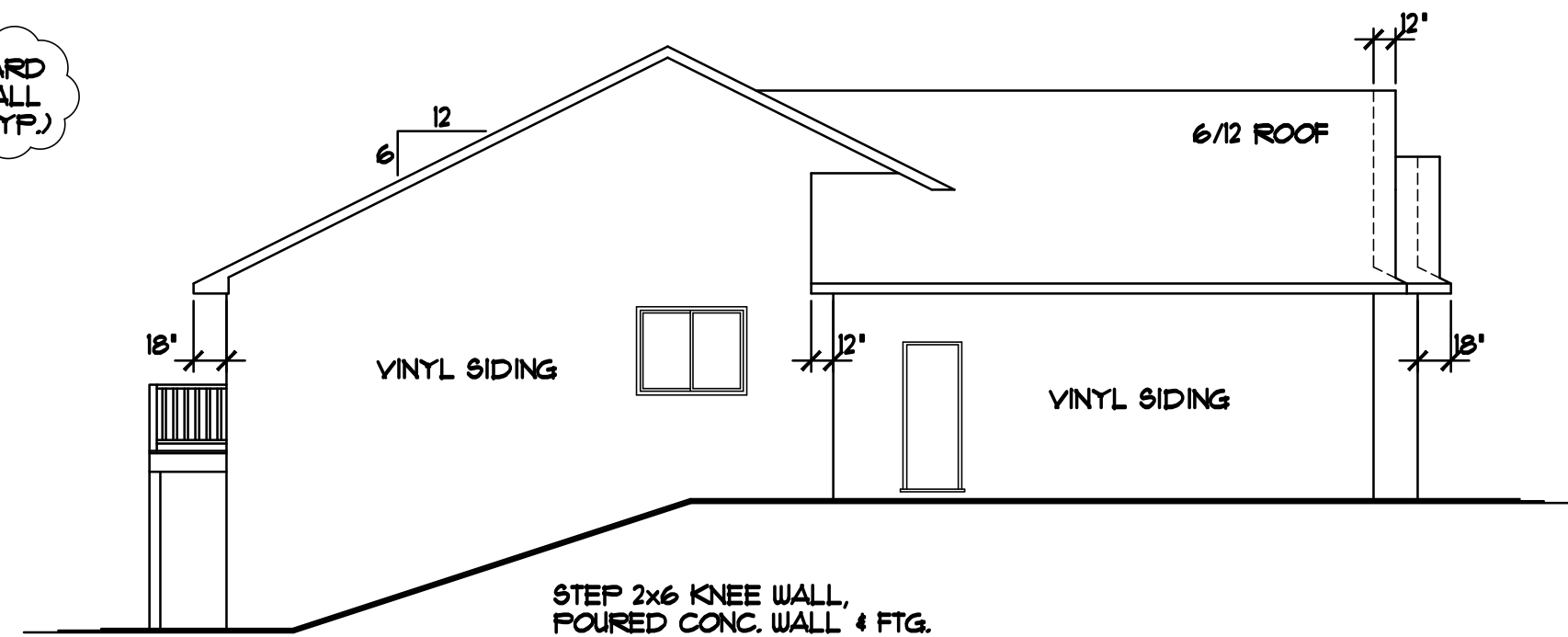
SHEET
2
 of 7
 CADD FILE #
 11321

NOTE III
 PROVIDE STANDARD ENERGY HEEL @ ALL ROOF TRUSSES (TYP.)



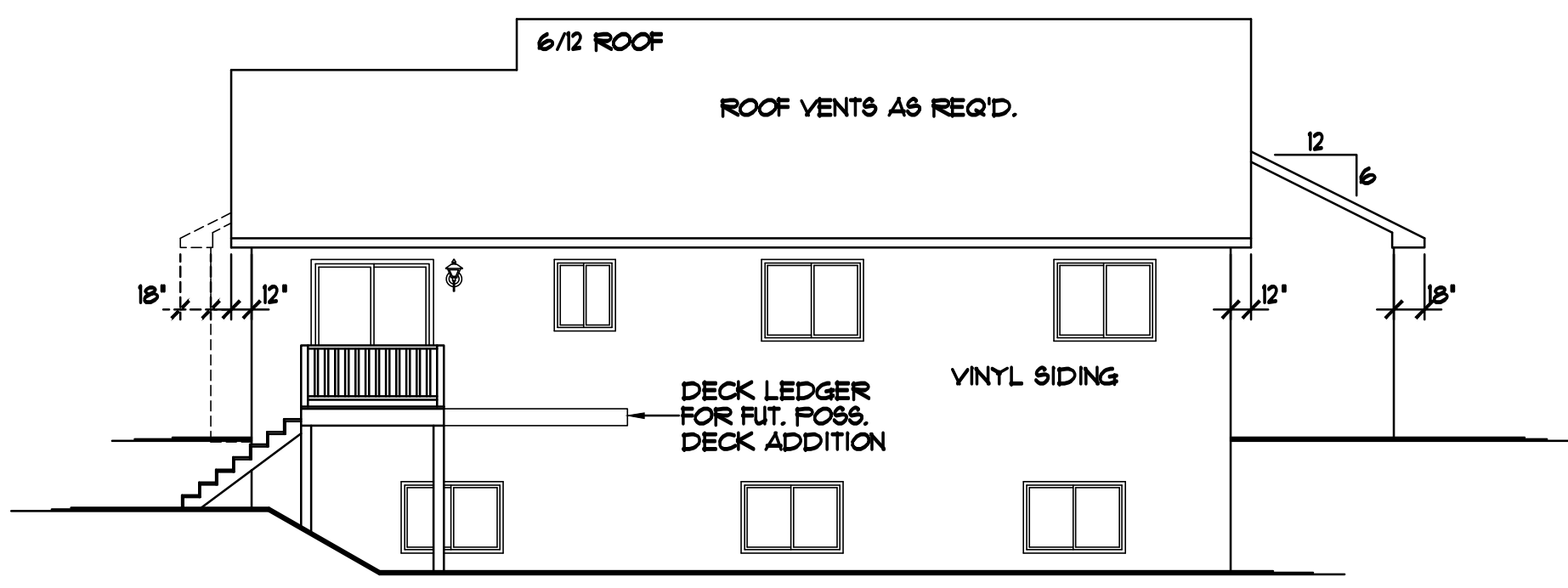
STEP 2x6 KNEE WALL,
 POURED CONC. WALL & FTG.
 PER GRADE, FIELD VERIFY

RIGHT ELEVATION 1/8"=1'-0"



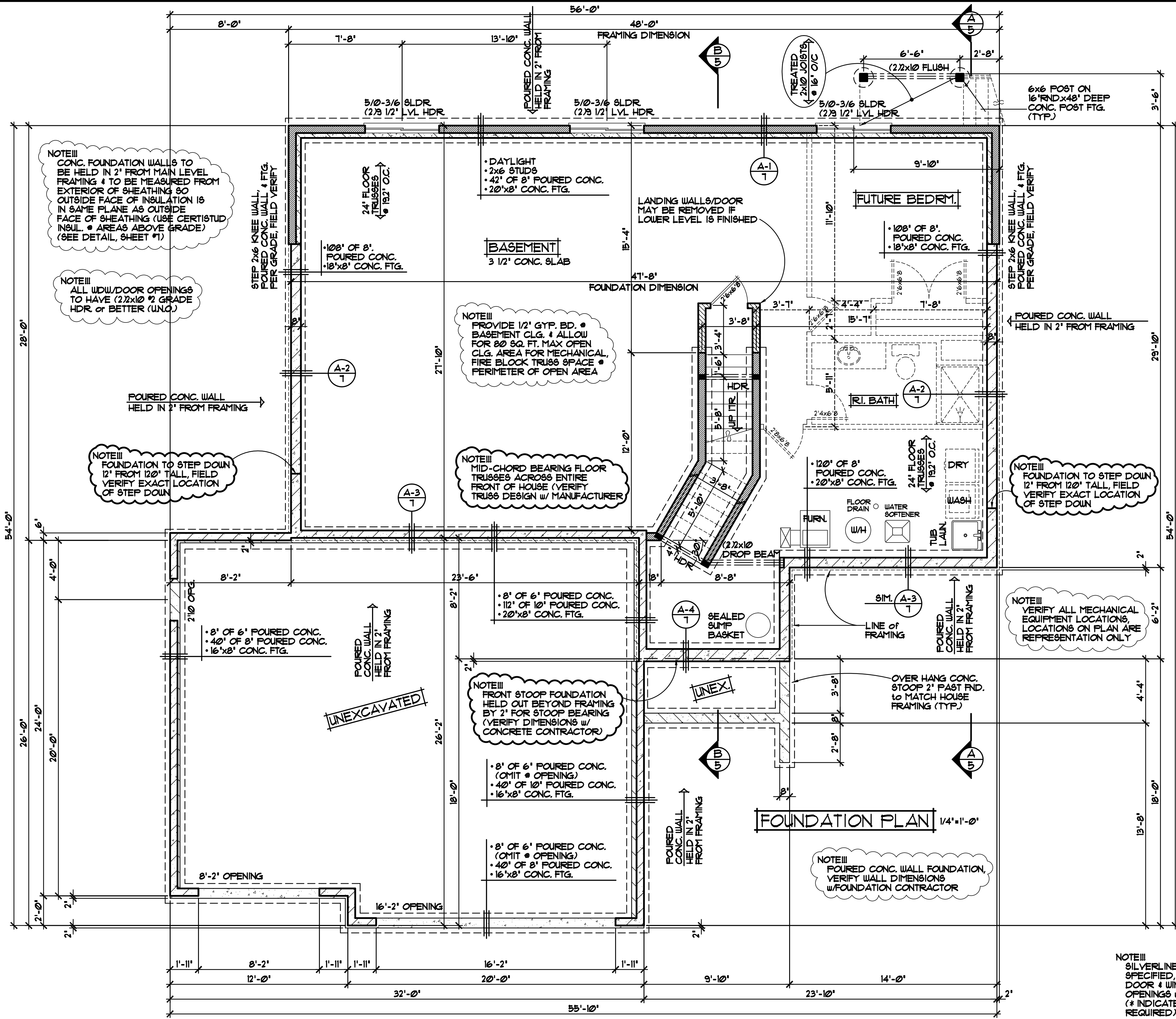
STEP 2x6 KNEE WALL,
 POURED CONC. WALL & FTG.
 PER GRADE, FIELD VERIFY

LEFT ELEVATION 1/8"=1'-0"



NOT ALL RAIL IS SHOWN FOR CLARITY OF ELEVATIONS, RAIL IS REQ'D ON DECK AND STAIRS (TYP.)

REAR ELEVATION 1/8"=1'-0"



NOTE III
 CONC. FOUNDATION WALLS TO BE HELD IN 2" FROM MAIN LEVEL FRAMING & TO BE MEASURED FROM EXTERIOR FACE OF SHEATHING SO OUTSIDE FACE OF INSULATION IS IN SAME PLANE AS OUTSIDE FACE OF SHEATHING (USE CERTIFIED INSUL. • AREAS ABOVE GRADE) (SEE DETAIL, SHEET #1)

NOTE III
 ALL WDW/DOOR OPENINGS TO HAVE (2)2x10 #2 GRADE HDR. or BETTER (UNCL.)

NOTE III
 FOUNDATION TO STEP DOWN 12" FROM 120" TALL, FIELD VERIFY EXACT LOCATION OF STEP DOWN

NOTE III
 PROVIDE 1/2" GYP. BD. • BASEMENT CLG. & ALLOW FOR 80 SQ. FT. MAX OPEN CLG. AREA FOR MECHANICAL, FIRE BLOCK TRUSS SPACE • PERIMETER OF OPEN AREA

NOTE III
 MID-CHORD BEARING FLOOR TRUSSES ACROSS ENTIRE FRONT OF HOUSE (VERIFY TRUSS DESIGN w/ MANUFACTURER)

NOTE III
 FRONT STOOP FOUNDATION HELD OUT BEYOND FRAMING BY 2" FOR STOOP BEARING (VERIFY DIMENSIONS w/ CONCRETE CONTRACTOR)

NOTE III
 FOURED CONC. WALL FOUNDATION, VERIFY WALL DIMENSIONS w/ FOUNDATION CONTRACTOR

NOTE III
 FOUNDATION TO STEP DOWN 12" FROM 120" TALL, FIELD VERIFY EXACT LOCATION OF STEP DOWN

NOTE III
 VERIFY ALL MECHANICAL EQUIPMENT LOCATIONS, LOCATIONS ON PLAN ARE REPRESENTATION ONLY

NOTE III
 SILVERLINE VINYL WINDOWS SPECIFIED, VERIFY ALL DOOR & WINDOW ROUGH OPENINGS w/ SUPPLIER (* INDICATES SASH LIMITER REQUIRED)

SPECIAL NOTICE:
 CROIX DESIGN AND DRAFTING, INC. ACCEPTS NO RESPONSIBILITY FOR ERRORS AND/OR OMISSIONS. THESE DRAWINGS ARE DESIGN CONCEPT ONLY. EVERY EFFORT HAS BEEN MADE TO PREPARE THESE DRAWINGS ACCURATELY. HOWEVER, THE USER SHALL BE RESPONSIBLE FOR VERIFYING ALL DIMENSIONS AND BEING RESPONSIBLE FOR ANY CHANGES OR ADJUSTMENTS REQUIRED DURING ACTUAL CONSTRUCTION. NO REPRESENTATION IS MADE OR IMPLIED FOR ACCURACY.

OFFICE: 763.757.5997
 FAX: 763.757.4383
 ANDOVER, MINNESOTA
 WWW.CROIXDESIGN.COM



BUILT BY:
 ELEVATE BUILDERS, LLC

SHEET
 3
 of 7
 CADD FILE #
 11321

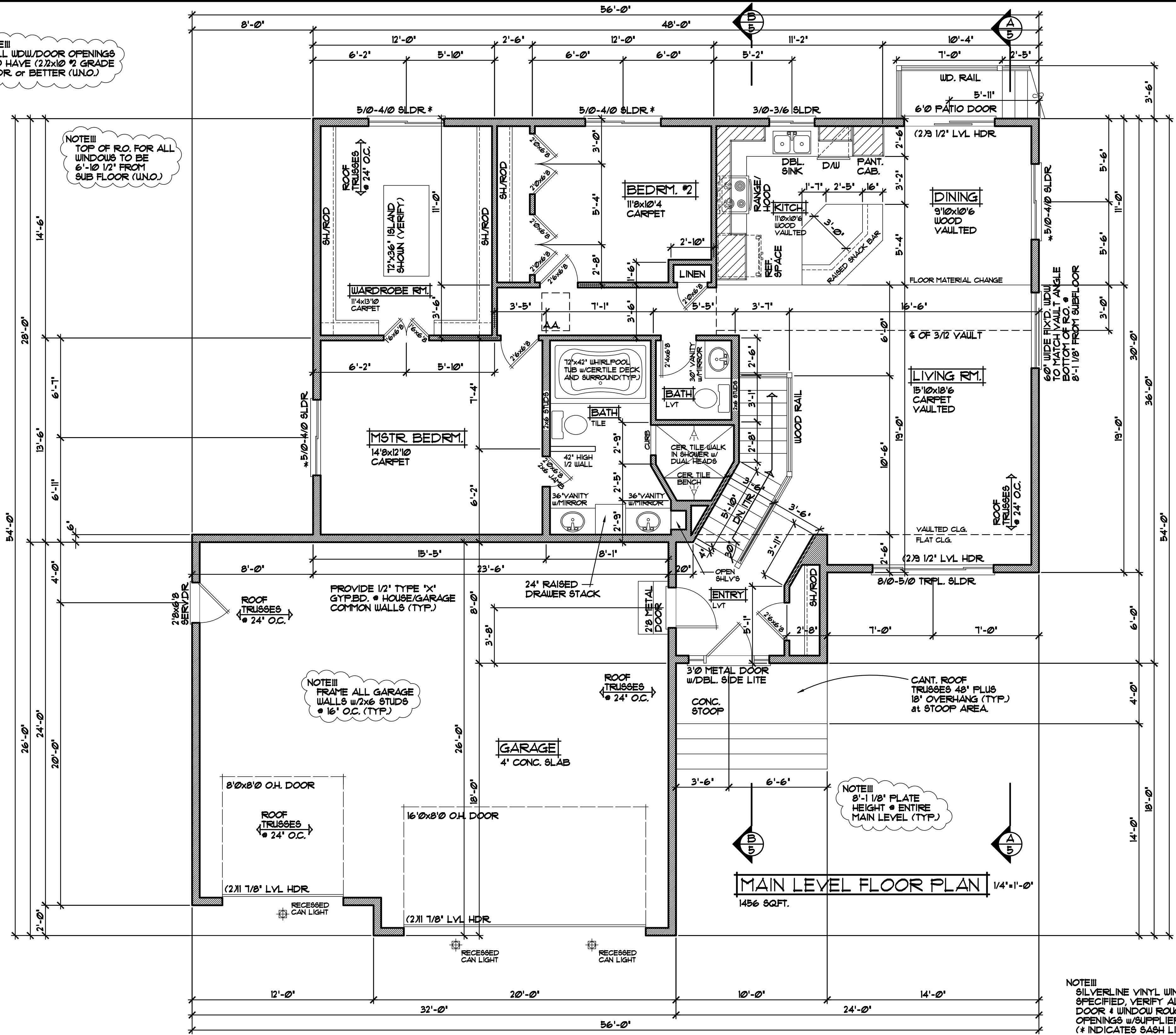
NOTE III
ALL WDW/DOOR OPENINGS
TO HAVE (2)2x10 #2 GRADE
HDR OR BETTER (U.N.O.)

NOTE III
TOP OF R.O. FOR ALL
WINDOWS TO BE
6'-10 1/2" FROM
SUB FLOOR (U.N.O.)

NOTE III
FRAME ALL GARAGE
WALLS w/2x6 STUDS
@ 16" O.C. (TYP.)

NOTE III
8'-1 1/8" PLATE
HEIGHT @ ENTIRE
MAIN LEVEL (TYP.)

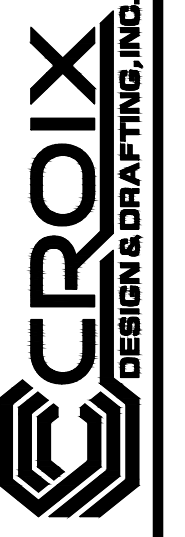
NOTE III
SILVERLINE VINYL WINDOWS
SPECIFIED. VERIFY ALL
DOOR & WINDOW ROUGH
OPENINGS w/SUPPLIER
(* INDICATES SASH LIMITER
REQUIRED)



MAIN LEVEL FLOOR PLAN 1/4"=1'-0"
1456 SQFT.

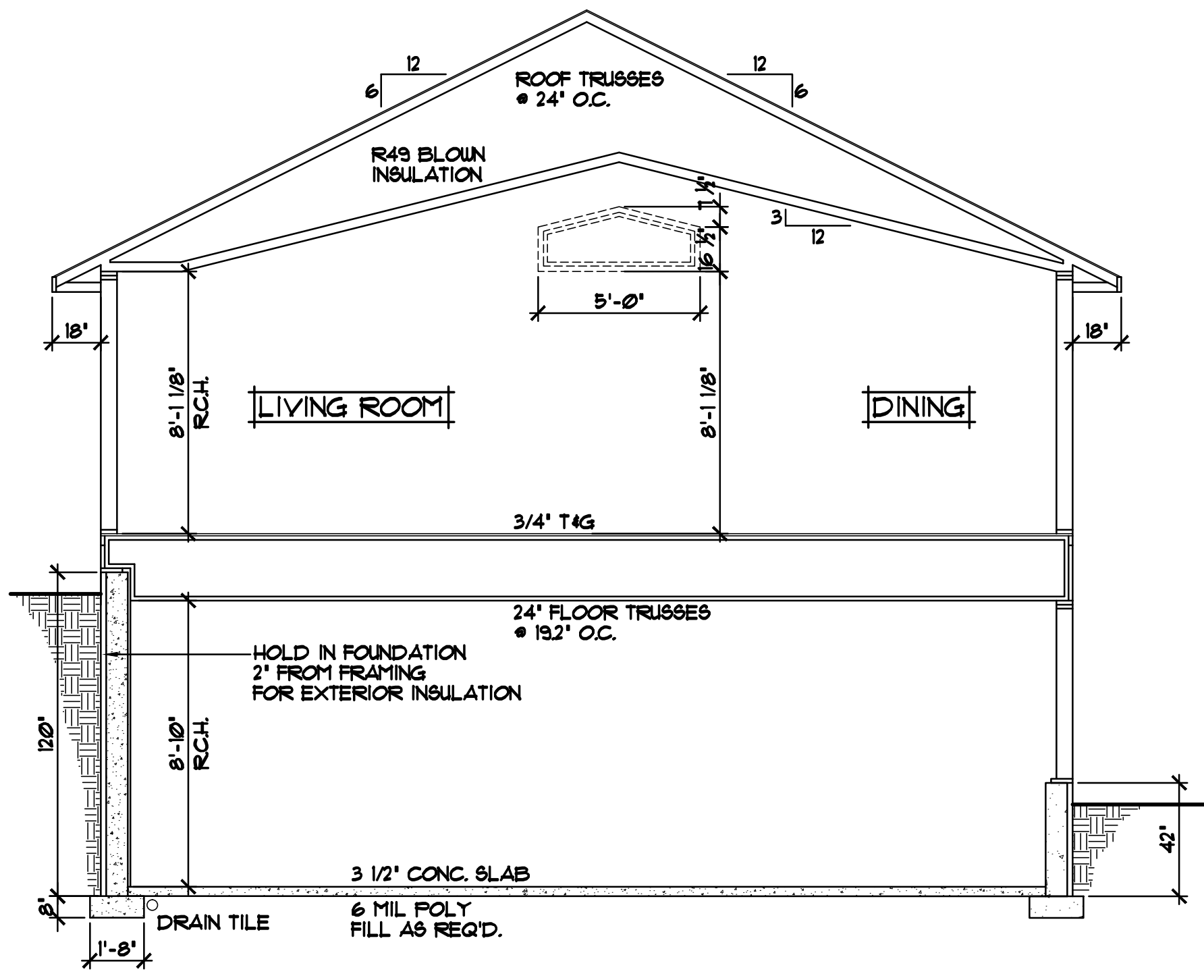
SPECIAL NOTICE:

OFFICE: 763.757.5997
FAX: 763.757.4383
ANDOVER, MINNESOTA
WWW.CROIXDESIGN.COM



BUILT BY:
ELEVATE BUILDERS, LLC

SHEET
4
of 7
CADD FILE #
11321



CROSS SECTION "A" 1/4" = 1'-0"

- ROOF CONSTRUCTION:**
- PREMANUFACTURED ROOF TRUSSES - ENGINEERED BY SUPPLIER - SLOPES VARY - SEE PLAN
 - R49 BLOWN FIBERGLASS INSULATION
 - 1/16" ROOF VENT AT SOFFITS, 1/16" VENT AT RIDGE
 - AIR CHUTE AT EACH TRUSS SPACE
 - 1/2" ROOF SHEATHING
 - 15# ROOFING FELT
 - ICE & WATER MEMBRANE APPLIED 24" PAST EXTERIOR WALL
 - ASPHALT SHINGLES

- SOFFIT / FASCIA:**
- 2x6 SUB-FASCIA
 - MAINTENANCE FREE FASCIA COVER
 - MAINTENANCE FREE VENTED SOFFIT

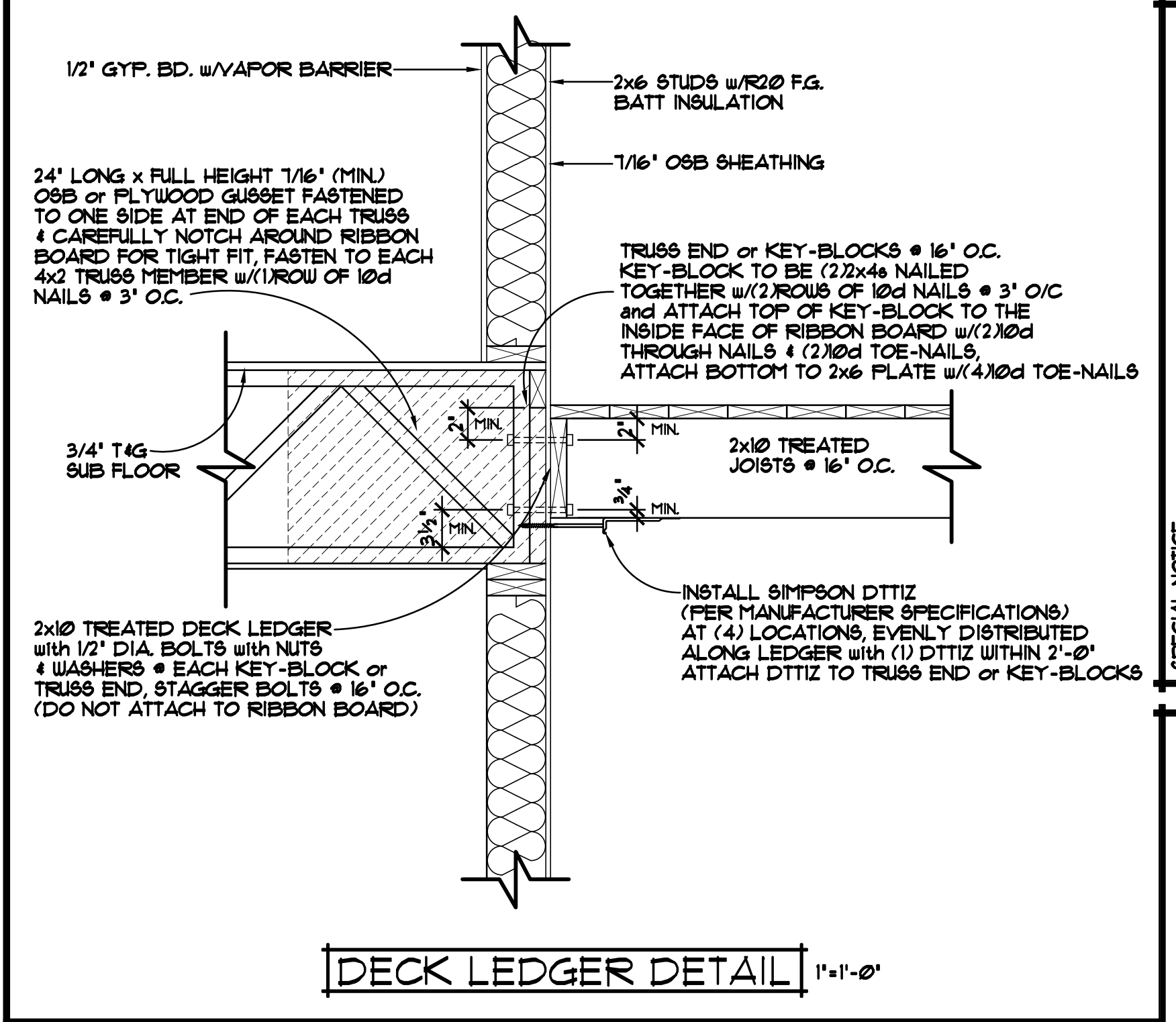
- WALL CONSTRUCTION:**
- HOUSE WRAP
 - 7/16" OSB SHEATHING
 - 2x6 STUDS @ 16" O.C.
 - WINDOWS PER SPEC'S
 - R-20 F.G. BATT INSULATION
 - 4 MIL POLY VAPOR BARRIER
 - 1/2" GYPSUM BOARD

- RIM AREA CONSTRUCTION:**
- CLOSED CELL SPRAYED FOAM INSUL. R20 (MINIMUM) @ RIM AREA AND R30 (MINIMUM) @ CANTS.

- WALL CONSTRUCTION:**
- SIMILAR TO ABOVE

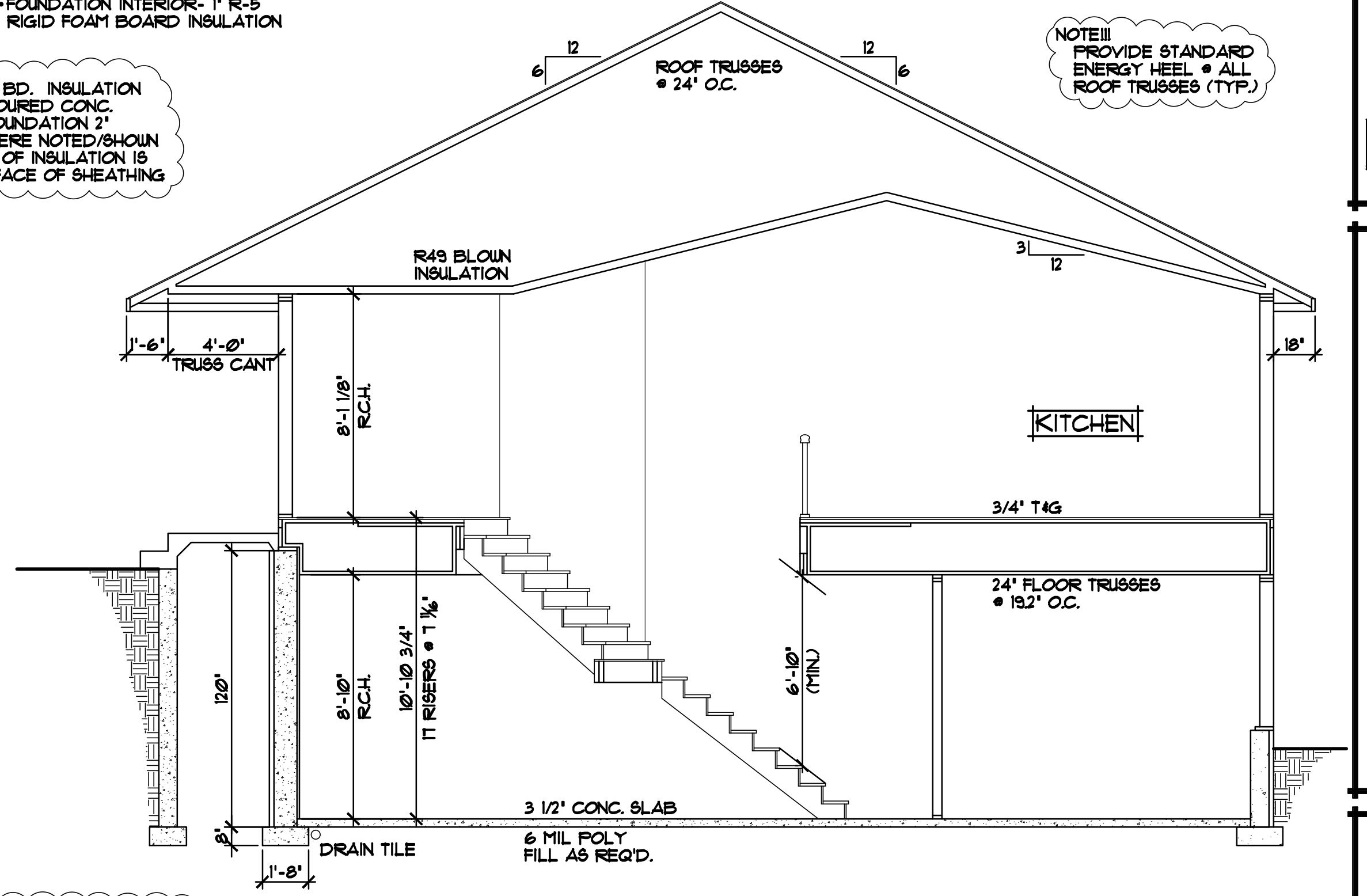
- SILL CONSTRUCTION:**
- 2x8 SILL PLATE & SEALER
 - 1/2" ANCHOR BOLTS @ 48" O.C.

- FOUNDATION INSULATION:**
- FOUNDATION EXTERIOR- 2" R-10 RIGID FOAM BOARD INSULATION
 - FOUNDATION INTERIOR- 1" R-5 RIGID FOAM BOARD INSULATION



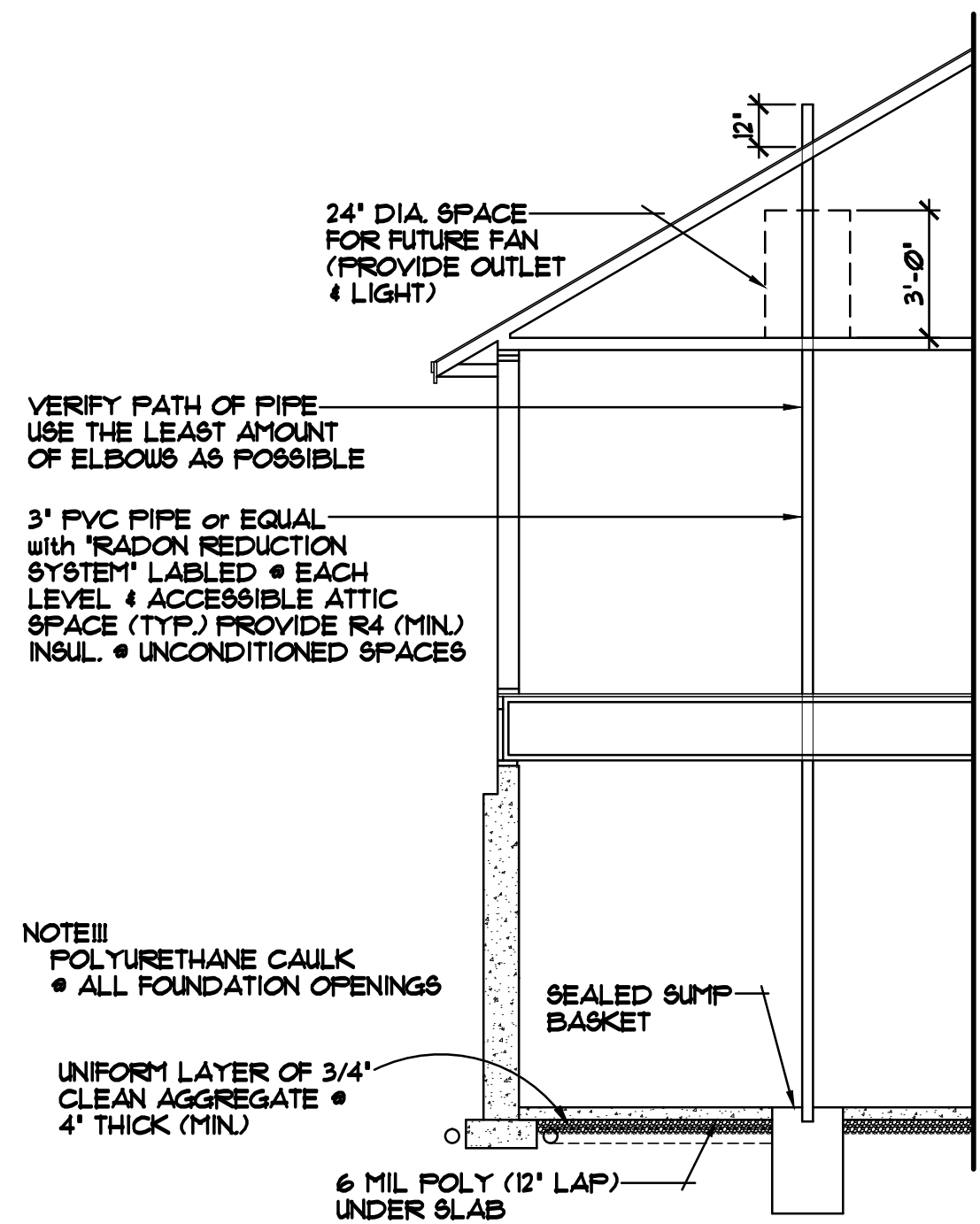
DECK LEDGER DETAIL 1" = 1'-0"

NOTE!!! PROVIDE 2" FOAM BD. INSULATION @ EXTERIOR OF Poured CONC. WALLS, HOLD IN FOUNDATION 2" FROM FRAMING WHERE NOTED/SHOWN SO OUTSIDE FACE OF INSULATION IS FLUSH w/OUTSIDE FACE OF SHEATHING



CROSS SECTION "B" 1/4" = 1'-0"

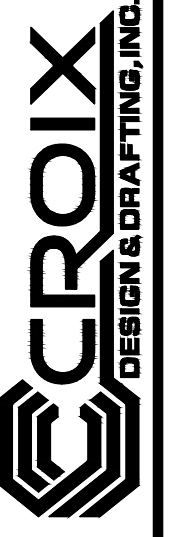
NOTE!!! Poured CONC. WALL FOUNDATION, VERIFY WALL DIMENSIONS w/FOUNDATION CONTRACTOR



ALTERNATE METHOD FOR PASSIVE RADON MITIGATION SYSTEM

SPECIAL NOTICE:
CROIX DESIGN AND DRAFTING, INC. ACCEPTS NO RESPONSIBILITY FOR ERRORS AND/OR OMISSIONS. THESE DRAWINGS ARE DESIGN CONCEPT ONLY. EVERY EFFORT HAS BEEN MADE TO PREPARE THESE DRAWINGS ACCURATELY. HOWEVER, THE USER SHALL BE RESPONSIBLE FOR VERIFYING ALL DIMENSIONS AND BEING RESPONSIBLE FOR ANY CHANGES OR ADJUSTMENTS REQUIRED DURING ACTUAL CONSTRUCTION. NO REPRESENTATION IS MADE OR IMPLIED FOR ACCURACY.

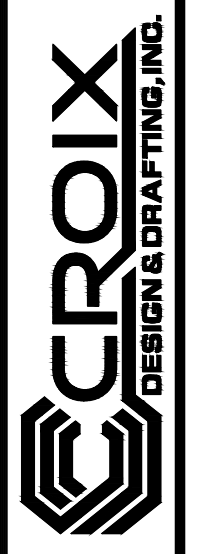
OFFICE: 763.757.5997
FAX: 763.757.4383
ANDOVER, MINNESOTA
WWW.CROIXDESIGN.COM



BUILT BY:
ELEVATE BUILDERS, LLC

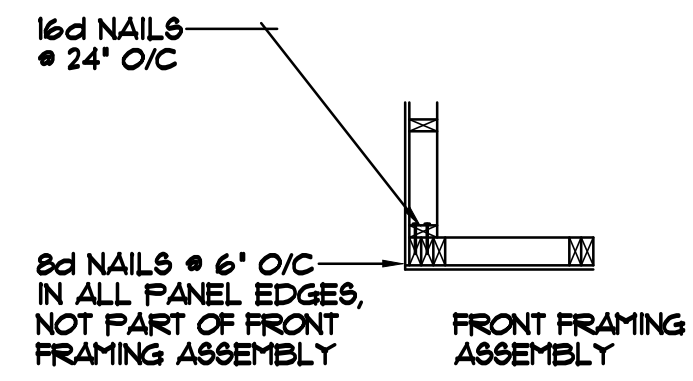
SPECIAL NOTICE:
 CROIX DESIGN AND DRAFTING, INC. ACCEPTS NO RESPONSIBILITY FOR ERRORS AND/OR OMISSIONS. THESE DRAWINGS ARE DESIGN CONCEPT ONLY. EVERY EFFORT HAS BEEN MADE TO PREVENT ERRORS, BUT THE USER MUST CHECK ALL DIMENSIONS AND CONDITIONS BEFORE CONSTRUCTION. THE USER SHALL BE RESPONSIBLE FOR ANY CHANGES OR ADJUSTMENTS REQUIRED DURING ACTUAL CONSTRUCTION. NO REPRESENTATION IS MADE OR IMPLIED FOR ACCURACY.

OFFICE: 763.757.5997
 FAX: 763.757.4383
 ANDOVER, MINNESOTA
 WWW.CROIXDESIGN.COM

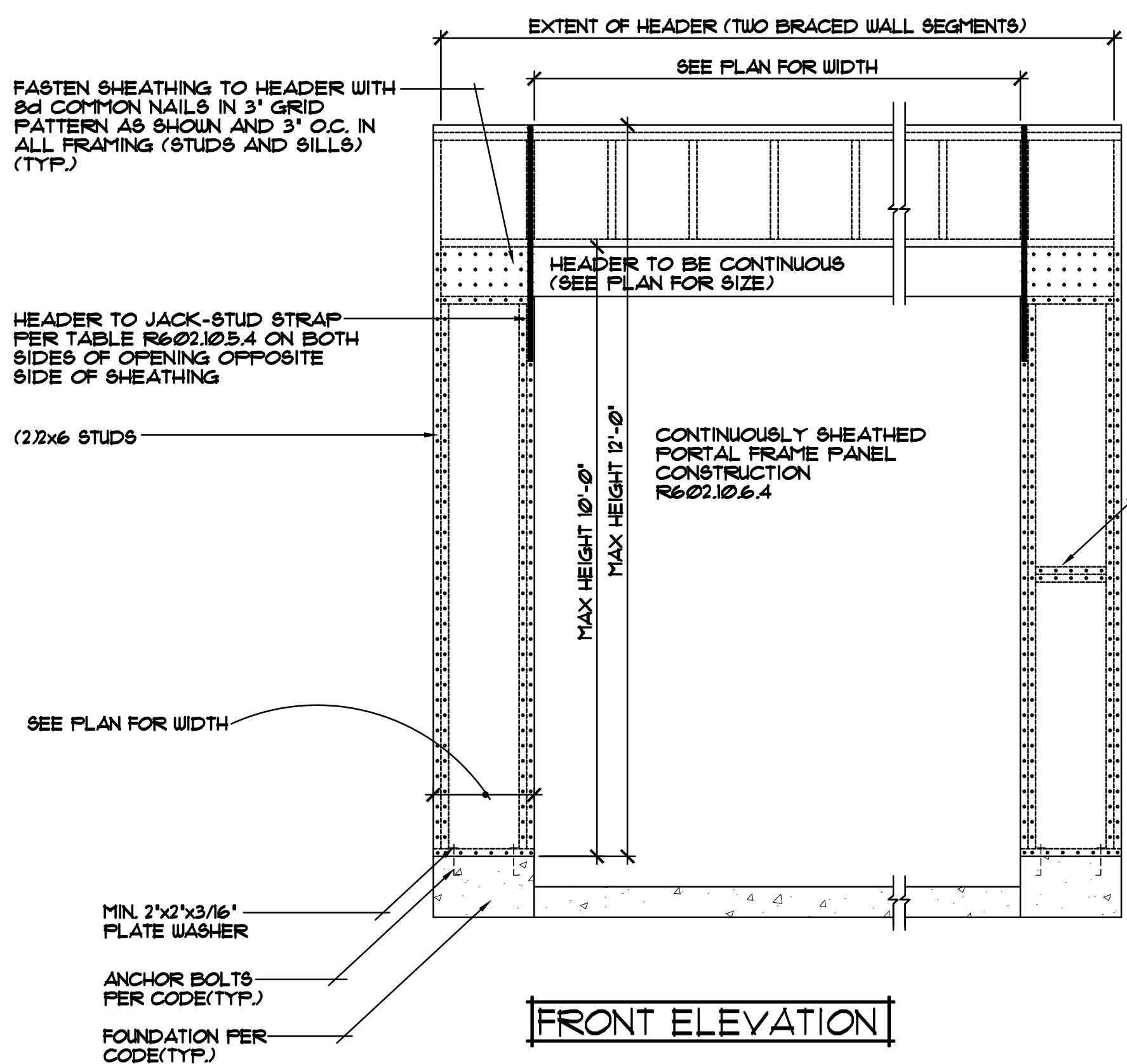


BUILT BY:
ELEVATE BUILDERS, LLC

SHEET
6
 of 7
 CADD FILE #
 11321

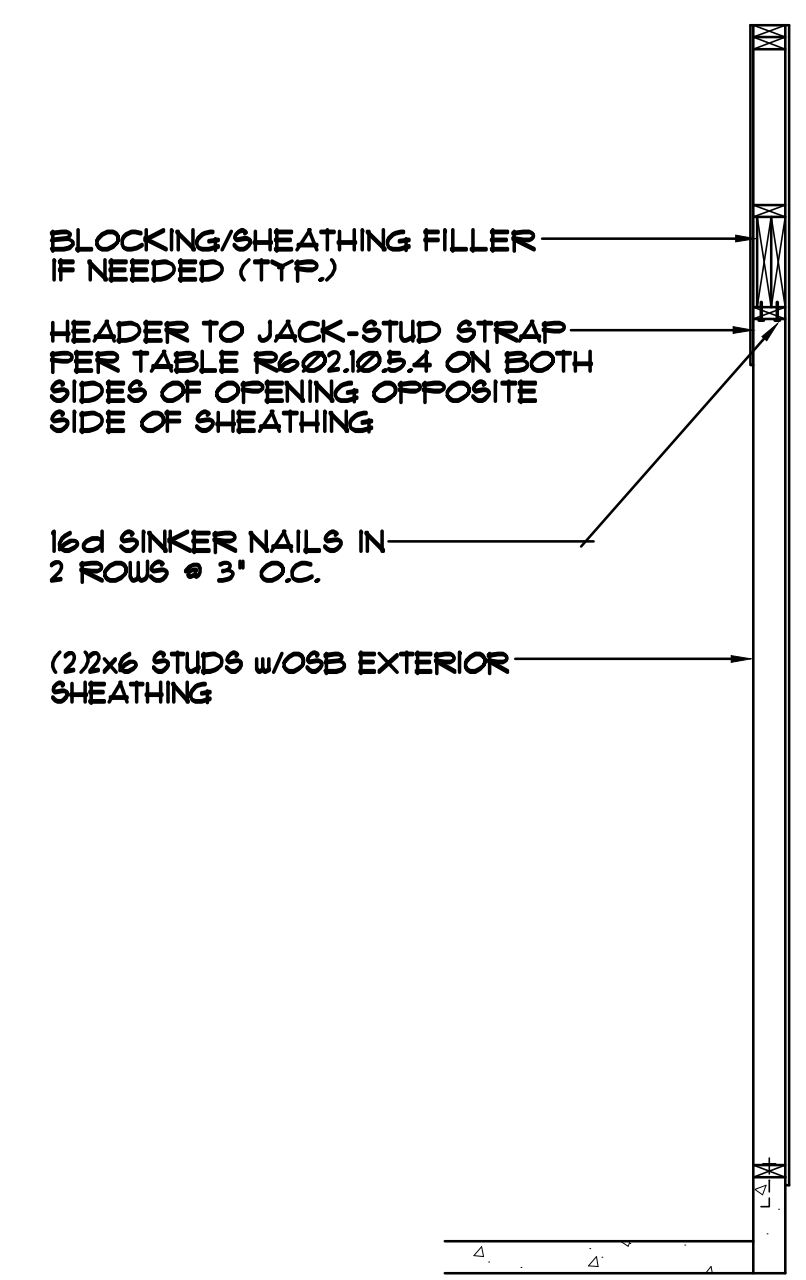


CORNER FRAMING DETAIL

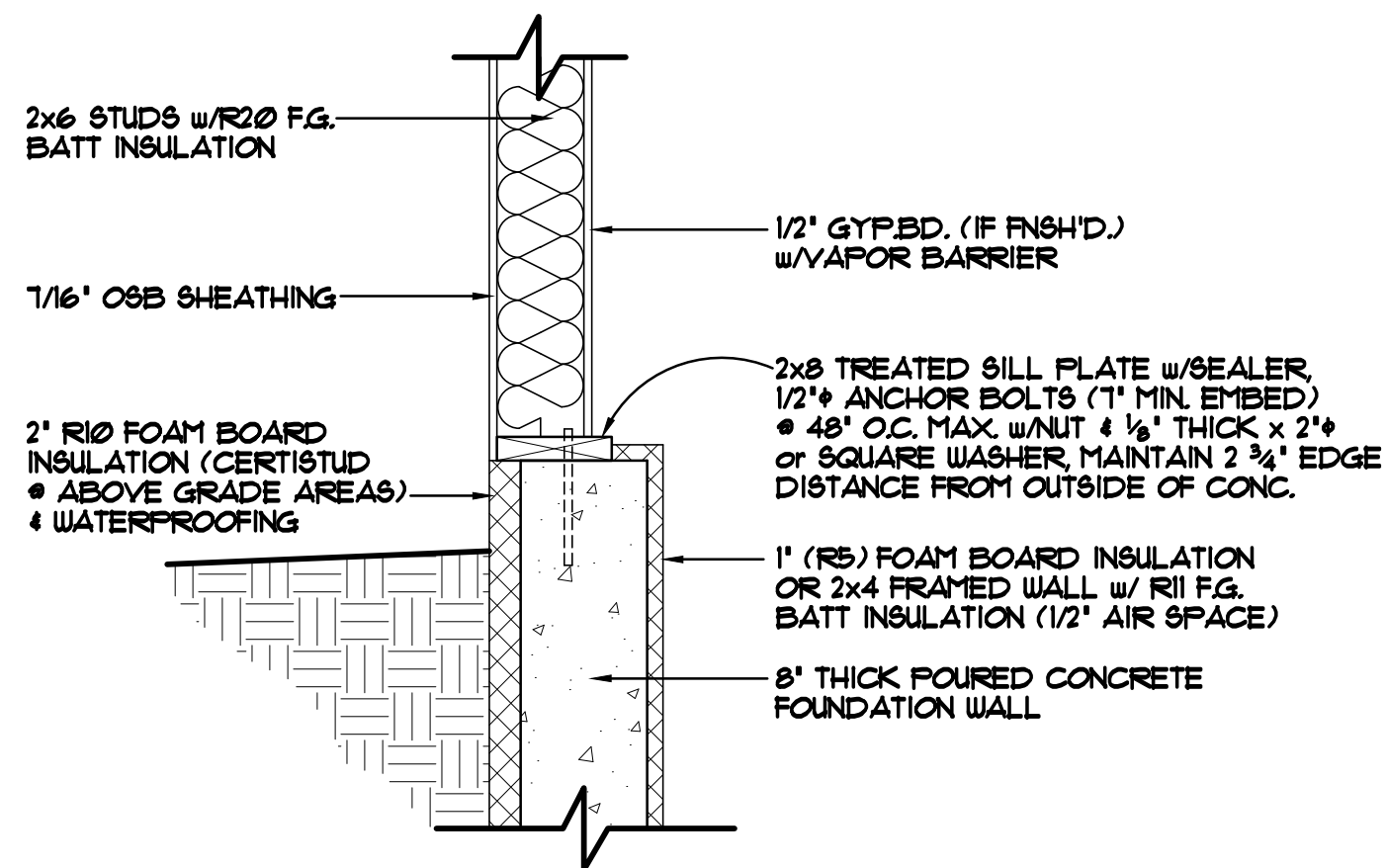


FRONT ELEVATION

CONTINUOUSLY SHEATHED PORTAL FRAME PANEL CONSTRUCTION 1/2"=1'-0"

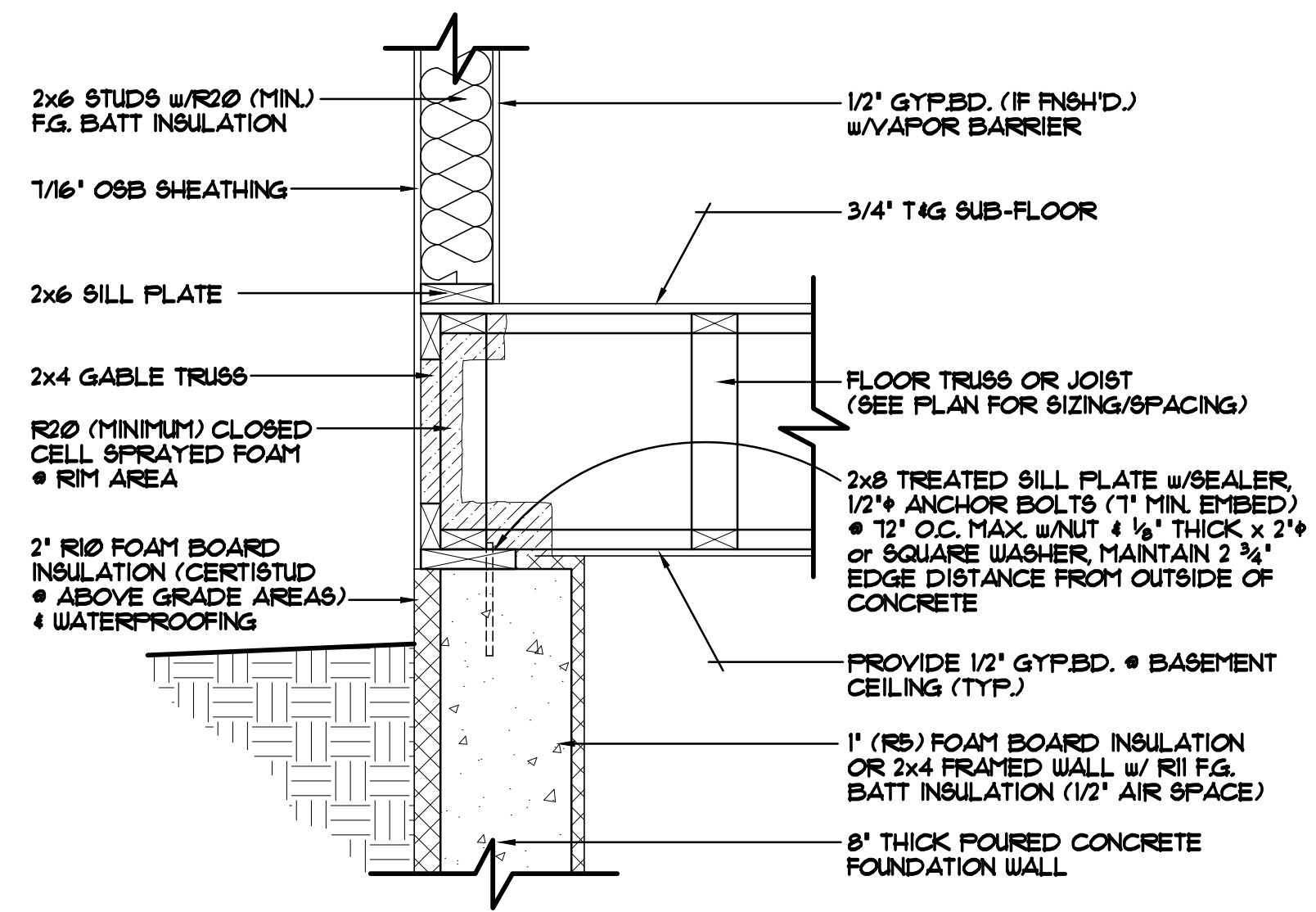


SIDE ELEVATION



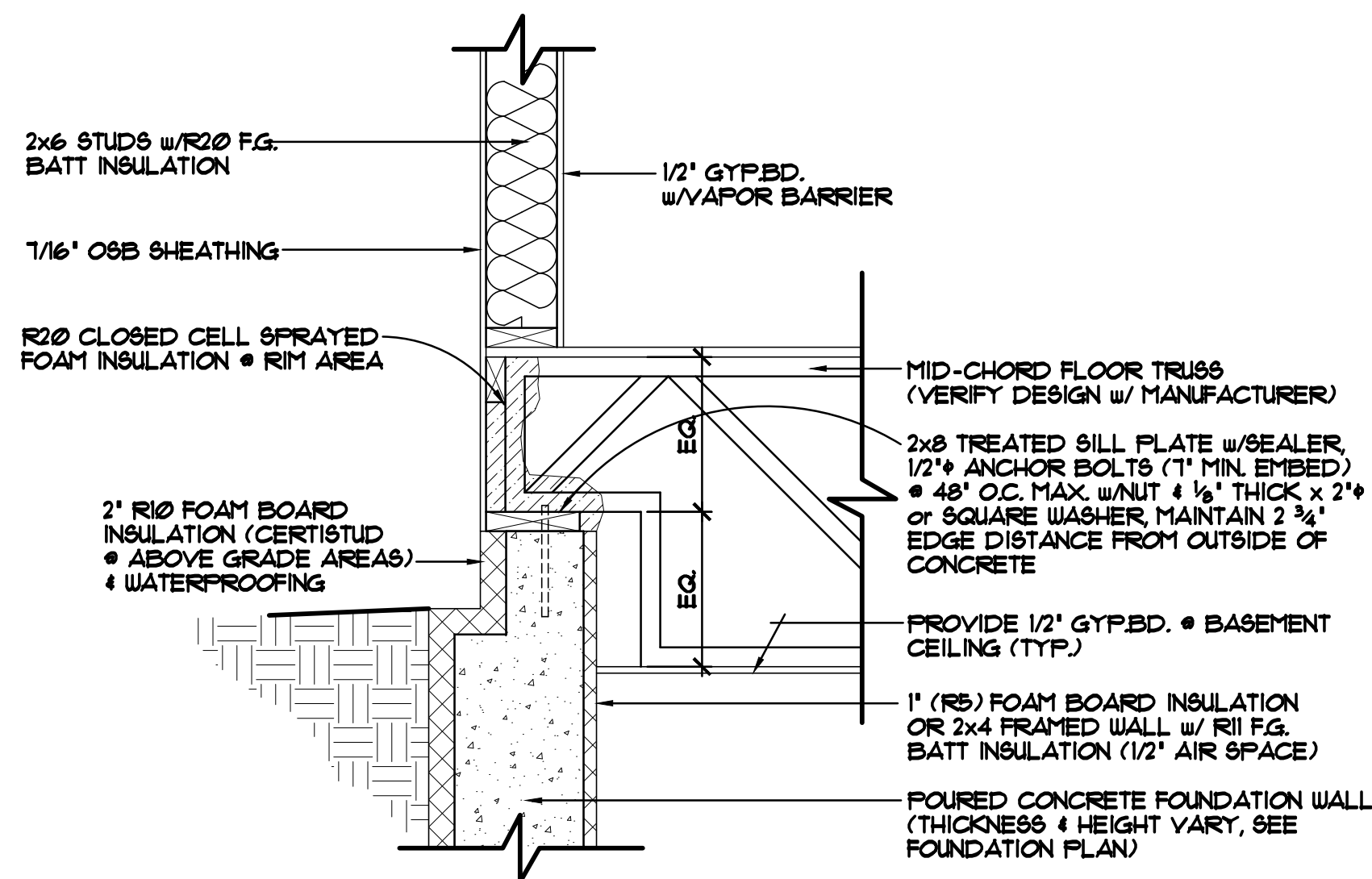
FOUNDATION/RIM AREA DETAIL "A-1" 1'-1'-0"

STANDARD DAYLIGHT SILL/FOUNDATION AREA
FOUNDATION HELD IN 2'



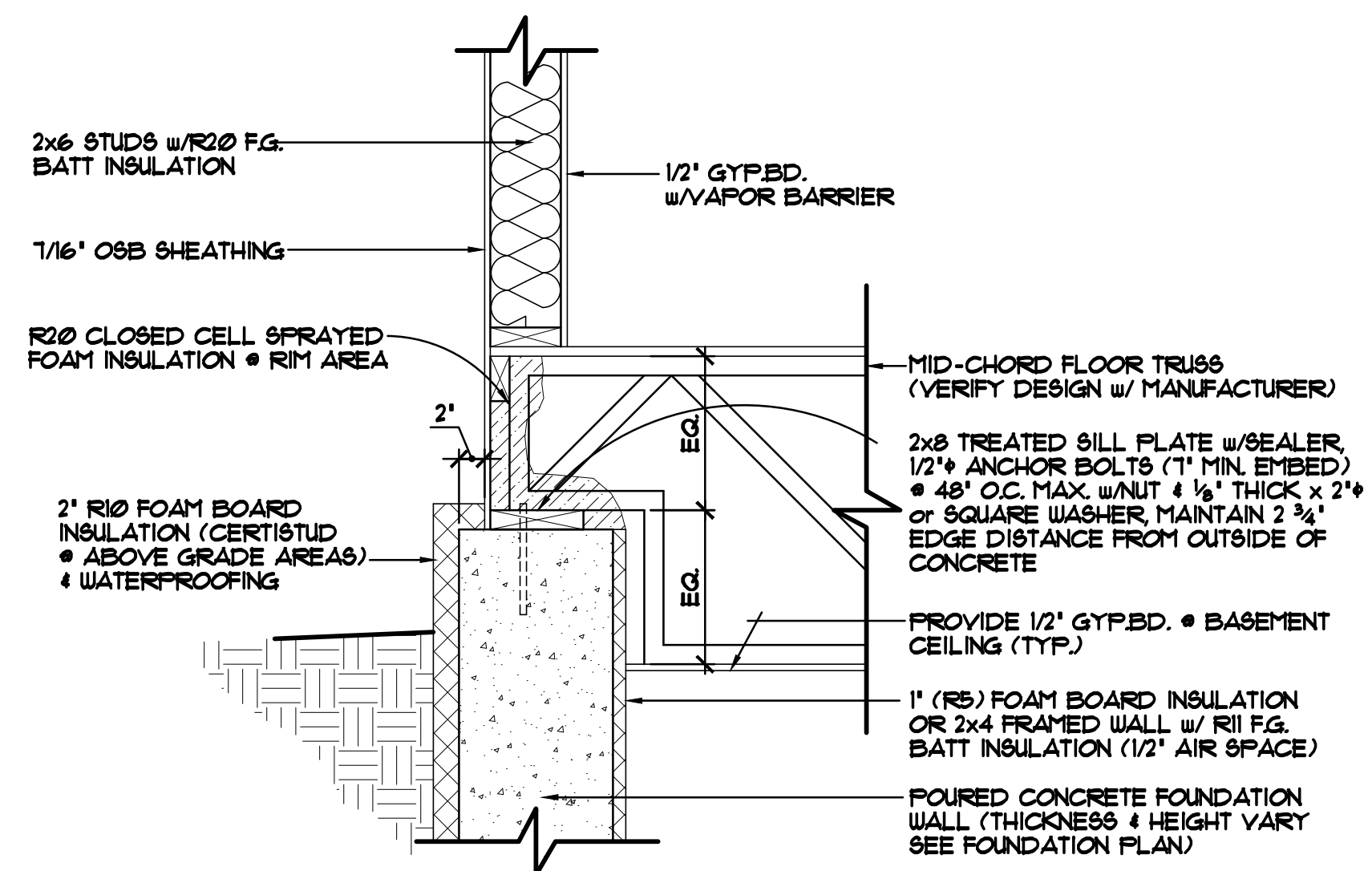
FOUNDATION/RIM AREA DETAIL "A-2" 1'-1'-0"

STANDARD RIM AREA, TRUSSES/JOISTS PARALLEL TO FOUNDATION WALL
FOUNDATION HELD IN 2'



FOUNDATION/RIM AREA DETAIL "A-3" 1'-1'-0"

RIM AREA with MID CHORD BEARING TRUSS
FOUNDATION HELD IN 2'
(VERIFY TRUSS DESIGN w/ TRUSS MANUFACTURER)



FOUNDATION/RIM AREA DETAIL "A-4" 1'-1'-0"

RIM AREA with MID-CHORD BEARING TRUSSES
FOUNDATION HELD OUT 2' FOR FRONT STOOP BEARING
(VERIFY TRUSS DESIGN w/ TRUSS MANUFACTURER)

SPECIAL NOTICE:
CROIX DESIGN AND DRAFTING, INC. ACCEPTS NO RESPONSIBILITY FOR ERRORS AND/OR OMISSIONS. THESE DRAWINGS ARE DESIGN CONCEPT ONLY. EVERY EFFORT HAS BEEN MADE TO PREVENT ERRORS AND OMISSIONS. THE USER SHALL BE RESPONSIBLE FOR VERIFYING ALL DIMENSIONS AND CONDITIONS AND BE RESPONSIBLE FOR ANY CHANGES OR ADJUSTMENTS REQUIRED DURING ACTUAL CONSTRUCTION. NO REPRESENTATION IS MADE OR IMPLIED FOR ACCURACY.

OFFICE: 763.757.5997
FAX: 763.757.4383
ANDOVER, MINNESOTA
WWW.CROIXDESIGN.COM



BUILT BY:
ELEVATE BUILDERS, LLC

SHEET
7
of 7
CADD FILE #
11321