

WINDOW and DOOR PERFORMANCE DATA
U-VALUE / SHGC / STC

•SINGLE HUNG UNIT
U-VALUE = 0.29
SHGC = 0.30
STC = 30

•SLIDER UNIT
U-VALUE = 0.29
SHGC = 0.30
STC = 30

•FIXED UNIT
U-VALUE = 0.21
SHGC = 0.31
STC = 21

•CASEMENT UNIT
U-VALUE = 0.21
SHGC = 0.24
STC = 28

•AWNING UNIT
U-VALUE = 0.21
SHGC = 0.24
STC = 28

•SLIDING PATIO DOOR
U-VALUE = 0.29
SHGC = 0.30
STC = 21

HOUSE INTERIOR VOLUME CALCULATION

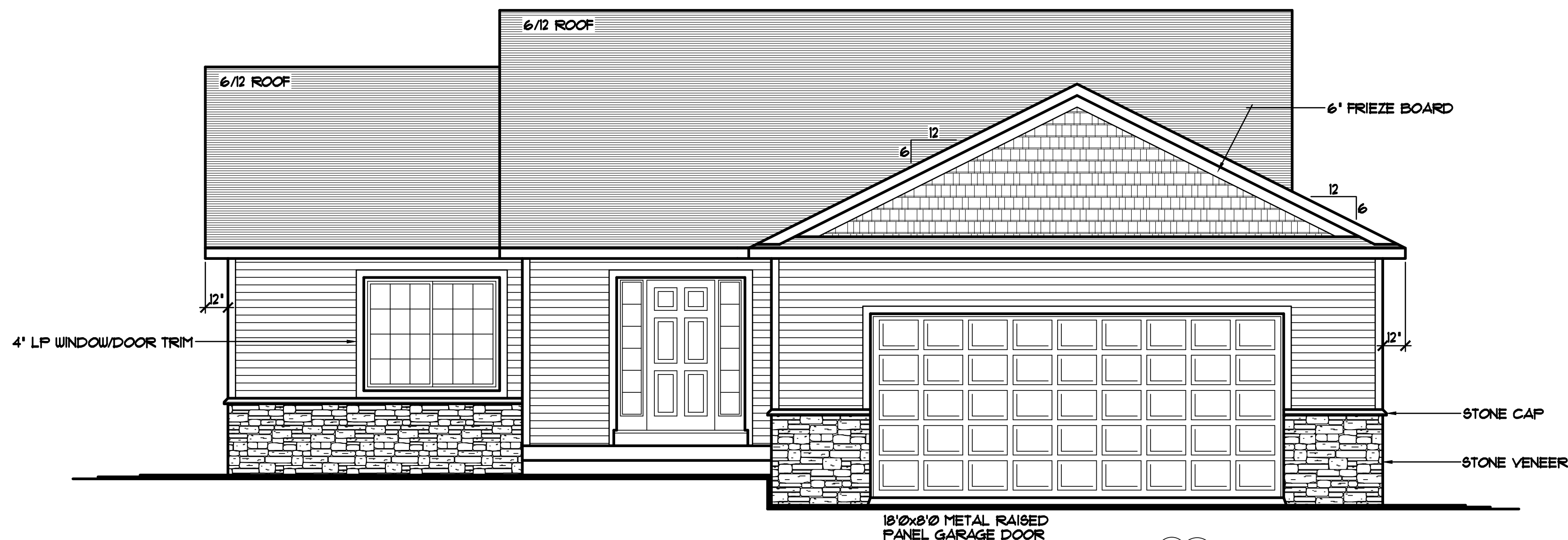
11892 CUBIC FEET (MAIN LEVEL VOLUME)
2641 CUBIC FEET (FLOOR TRUSS SPACE VOLUME)
10123 CUBIC FEET (BASEMENT VOLUME)
24662 CUBIC FEET (TOTAL INTERIOR VOLUME)

LEVEL HEIGHT INFORMATION TABLE

LEVEL	R.C.H.	TOP OF WINDOW RO.
BASEMENT	7'-10"	6'-10 1/2"
MAIN LEVEL	8'-1 1/8"	6'-10 1/2"

NOTE!!!
PROVIDE STANDARD ENERGY HEEL @ ALL ROOF TRUSSES (TYP.)

- SILVERLINE WINDOWS SPEC'D.
- WINDOWS w/GRIDS WHERE SHOWN
- VINYL SHAKES WHERE SHOWN
- VINYL SIDING @ FRONT, SIDES, & REAR
- ALUMINUM SOFFITS & FASCIA
- STONE VENEER WHERE SHOWN



FRONT ELEVATION 1/4"=1'-0"
1405 SQ. FT. MAIN LEVEL

NOTE!!!
GARAGE TO BE DROPPED, CREATE SLAB LEDGE 24" FROM TOP OF 108" POURED FOUNDATION WALLS

THE:
DIANE/JOHN PLAN
6081 FULLER CIRCLE
LOT 13, BLOCK 2, KENNEDY ESTATES
WYOMING, MN

REVISED R.B. 7/19/2011
REVISED R.B. 8/23/2011

© COPYRIGHT 2004-2011 NOTICE, ALL RIGHTS RESERVED
CROIX DESIGN and DRAFTING, INC.

REVISIONS	BY
04172	R.M.
06338	J.M.
14014	N.F.
14248	J.C.
15292	R.B.

SPECIAL NOTICE:
CROIX DESIGN and DRAFTING, INC. ACCEPTS NO RESPONSIBILITY FOR ERRORS AND/OR OMISSIONS. THESE DRAWINGS ARE DESIGN CONCEPT ONLY. EVERY EFFORT HAS BEEN MADE TO DESIGN ACCURATELY THE HOUSE GENERAL CONTRACTOR SHALL VERIFY ALL SUB-CONTRACTORS AND SUPPLIERS MUST CHECK ALL DETAILS AND DIMENSIONS AND BE RESPONSIBLE FOR ANY CHANGES OR ADJUSTMENTS REQUIRED DURING ACTUAL CONSTRUCTION. NO REPRESENTATION IS MADE OR IMPLIED FOR ACCURACY.
© COPYRIGHT NOTICE, ALL RIGHTS RESERVED
THESE ARCHITECTURAL PLANS AND ALL RELATED WORKS ARE PROTECTED BY UNITED STATES COPYRIGHT LAWS, AND THAT NOT BE REPRODUCED OR TRANSMITTED IN ANY FORM OR BY ANY MEANS, WITH OR WITHOUT THE EXPRESS WRITTEN PERMISSION OF CROIX DESIGN and DRAFTING, INC. CROIX DESIGN and DRAFTING, INC.

DESIGN and DRAFTING BY:

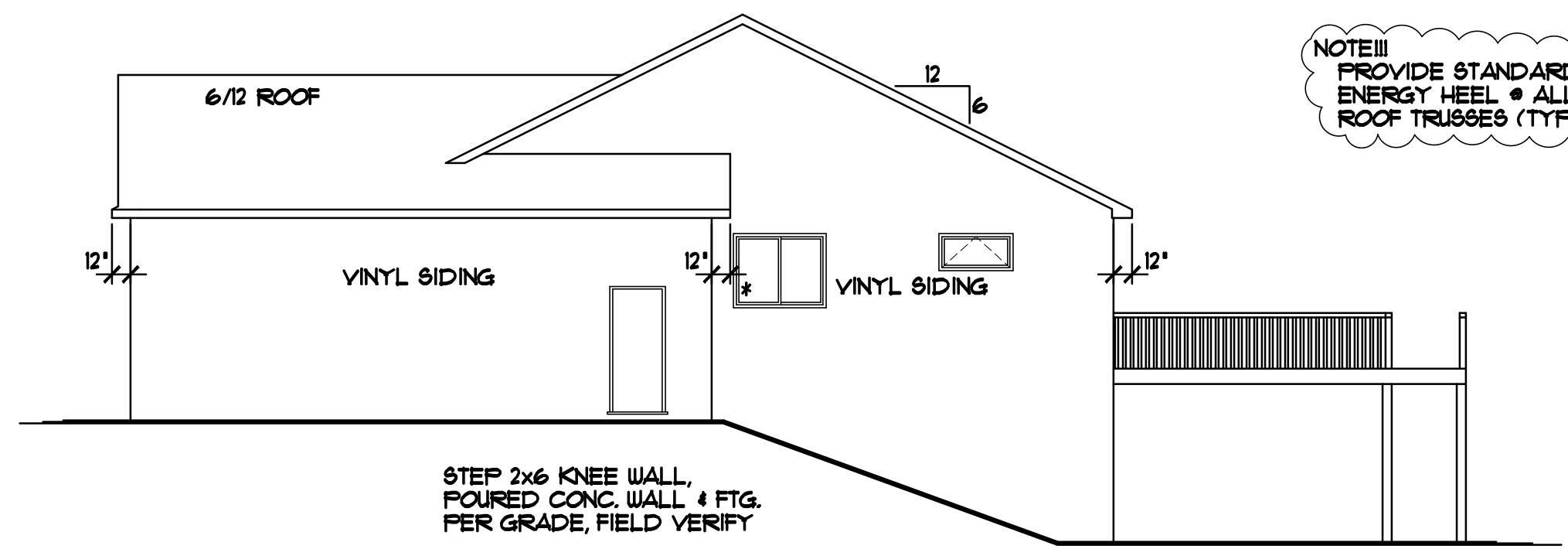
•ARCHITECTURAL DESIGN and DRAFTING SERVICE •
•HOME PLAN SERVICE • CUSTOM HOMES • REMODELING •
•PHONE: 763.757.5997 • ANDOVER, MINNESOTA •
•WWW.CROIXDESIGN.COM •

BUILT BY:

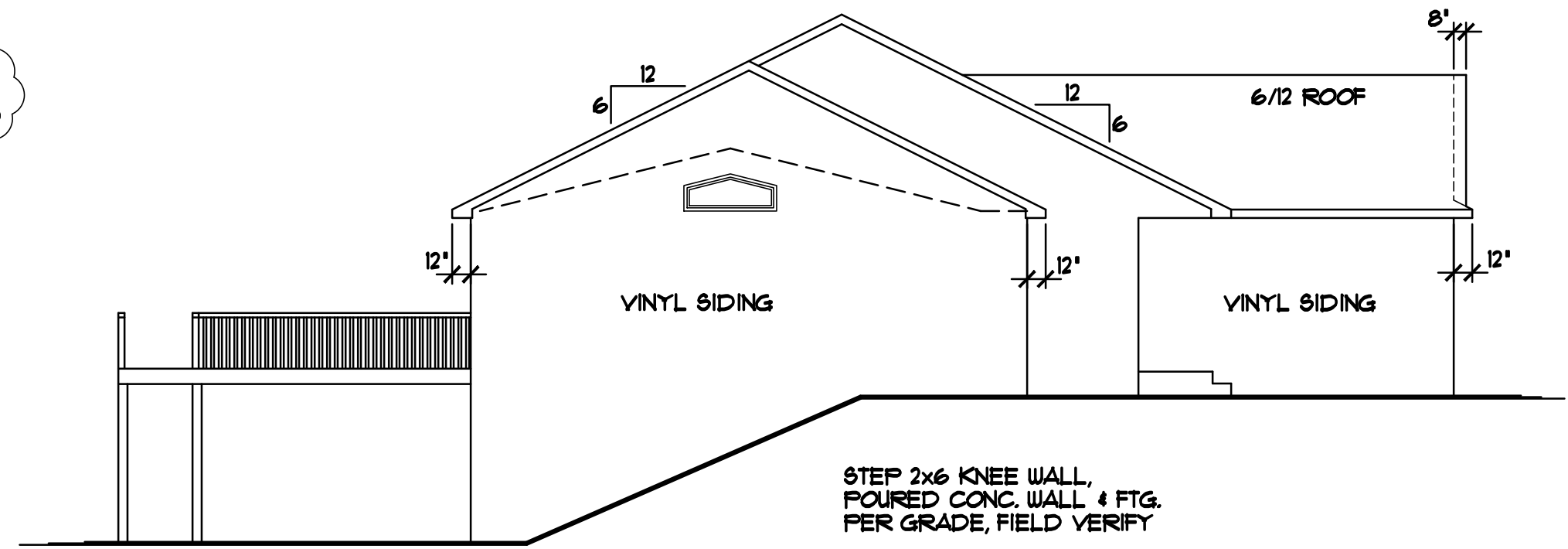
ELEVATE BUILDERS, LLC
P.O. BOX 114
FOREST LAKE, MN 55025

DRAWN R.B.
CHECKED XX
DATE: 07/06/2011
SCALE: AS NOTED
CADD FILE # 11215
SHEET 1 OF 8

REVISIONS
XXXXXX 0000 BY:XX
XXXXXX 0000 BY:XX

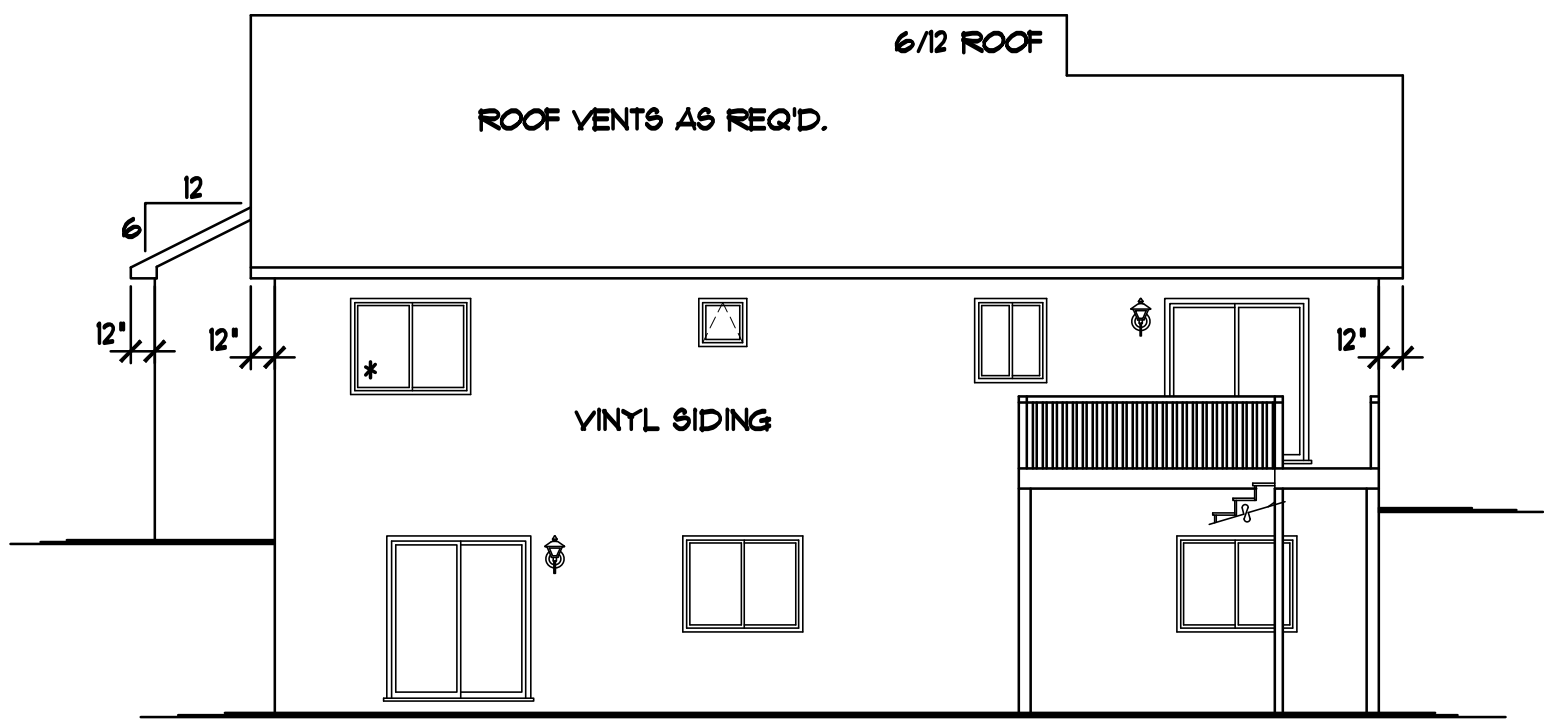


RIGHT ELEVATION 1/8"=1'-0"

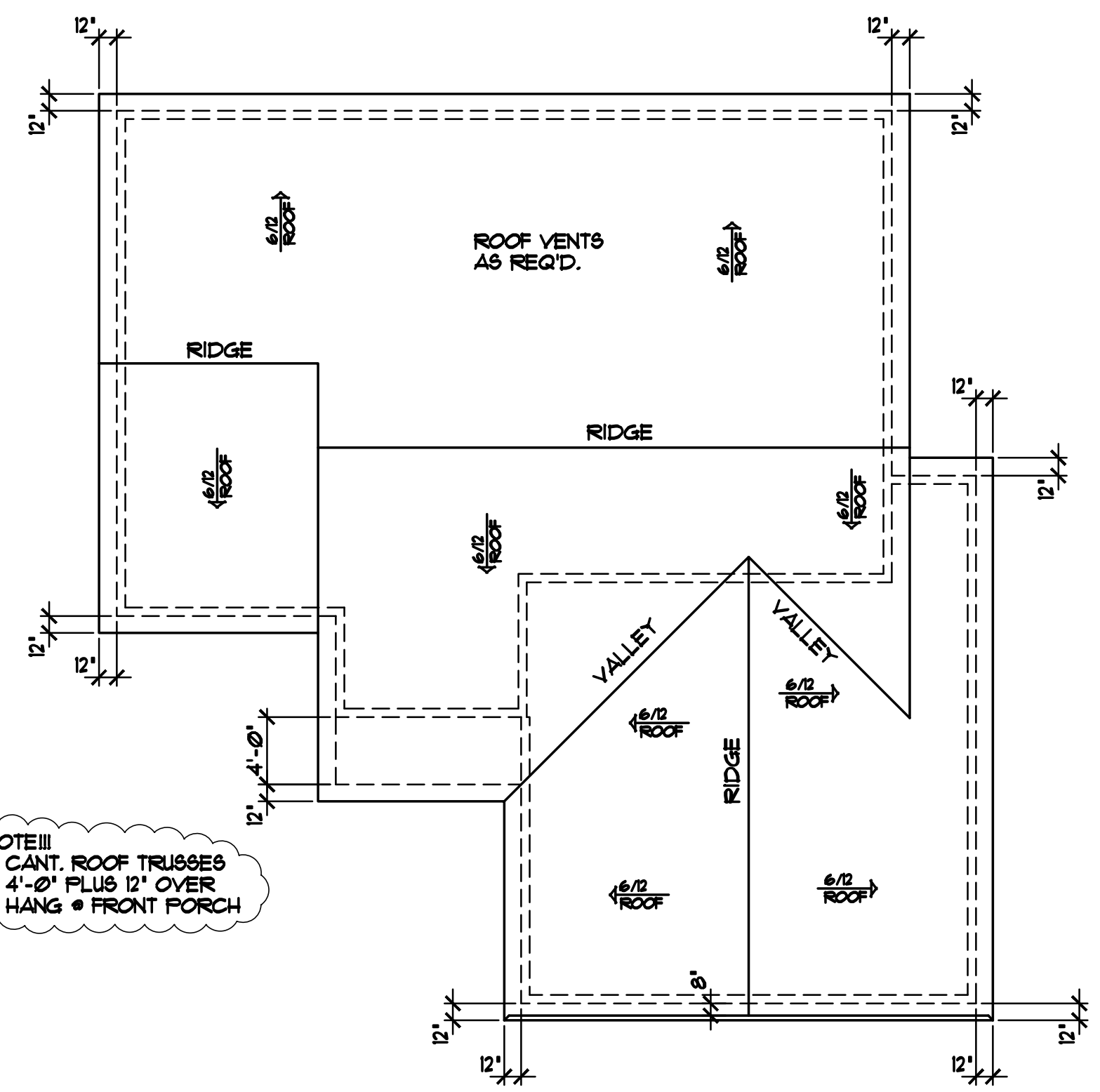


LEFT ELEVATION 1/8"=1'-0"

NOTE III
NOT ALL RAIL IS SHOWN FOR CLARITY OF ELEVATIONS, RAIL IS REQ'D ON DECK AND STAIRS (TYP.)



REAR ELEVATION 1/8"=1'-0"



BIRDS EYE ROOF PLAN 1/8"=1'-0"

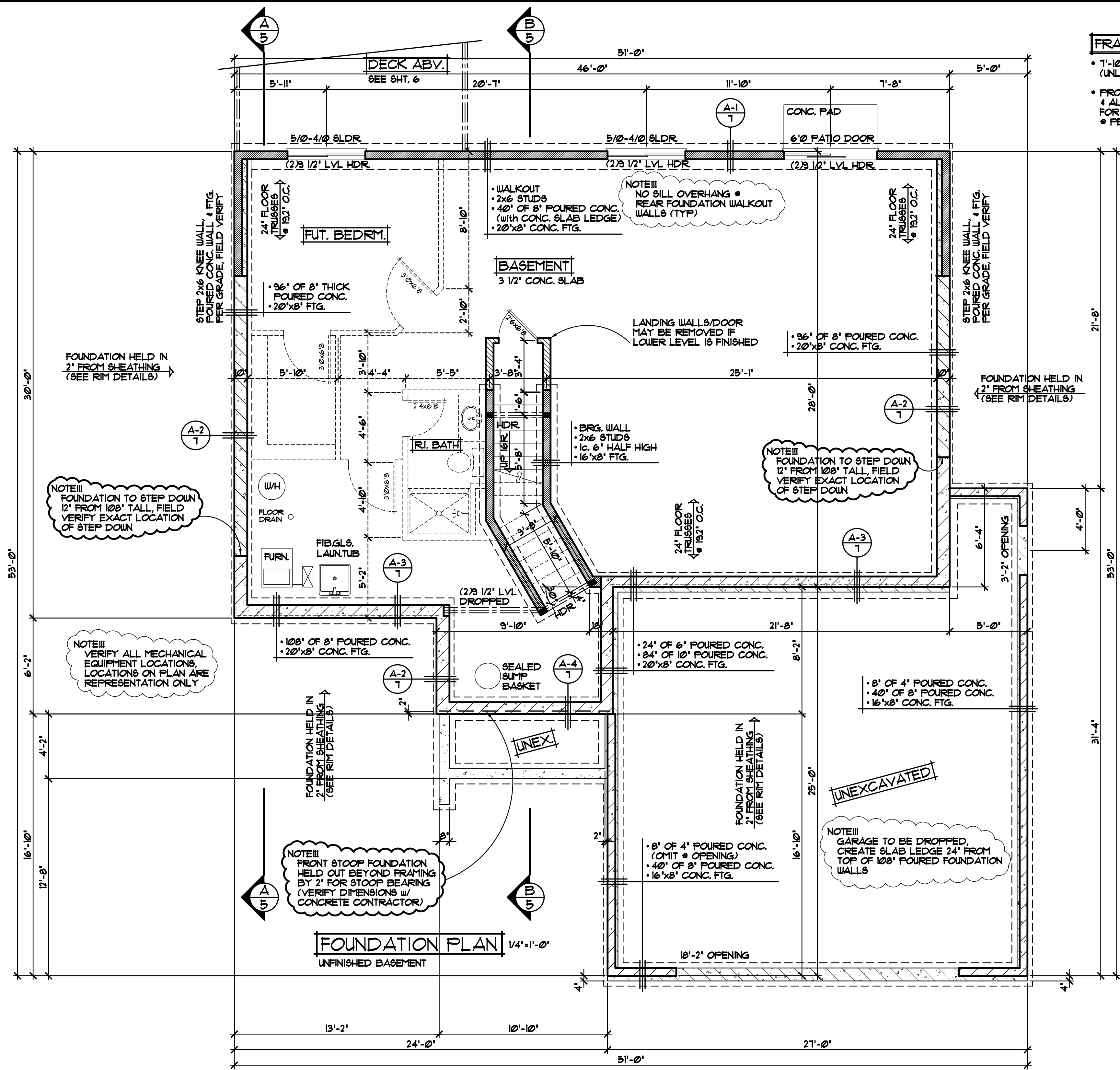
SPECIAL NOTICE:
CROIX DESIGN AND DRAFTING, INC. ACCEPTS NO RESPONSIBILITY FOR ERRORS AND/OR OMISSIONS. THESE DRAWINGS ARE DESIGN CONCEPT ONLY. EVERY EFFORT HAS BEEN MADE TO PREPARE THESE DRAWINGS ACCURATELY. HOWEVER, THE USER SHALL BE RESPONSIBLE FOR VERIFYING ALL DIMENSIONS AND BE RESPONSIBLE FOR ANY CHANGES OR ADJUSTMENTS REQUIRED DURING ACTUAL CONSTRUCTION. NO REPRESENTATION IS MADE OR IMPLIED FOR ACCURACY.

OFFICE: 763.757.5997
FAX: 763.757.4383
ANDOVER, MINNESOTA
WWW.CROIXDESIGN.COM



BUILT BY:
ELEVATE BUILDERS, LLC

SHEET
2
OF 8
CADD FILE #
17275



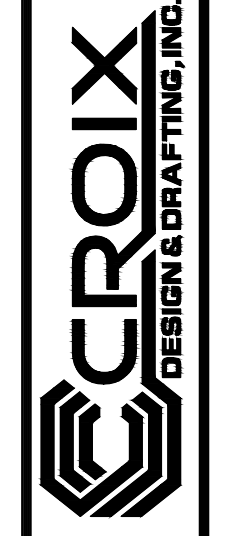
FRAMING & CONSTRUCTION NOTES

- 7'-10" PLATE HEIGHT • ENTIRE LOWER LEVEL (UNLESS NOTED OTHERWISE)
- PROVIDE 1/2" GYP. BD. • BASEMENT CEILING & ALLOW 80 SQFT. (MAX) OPEN CLG. AREA FOR MECHANICAL, FIRE BLOCK TRUSS SPACE
- PERIMETER OF OPEN AREA

REVISIONS
XXXXXX 0000 BY:XX
XXXXXX 0000 BY:XX

SPECIAL NOTICE:
CROIX DESIGN AND DRAFTING, INC. ACCEPTS NO RESPONSIBILITY FOR ERRORS AND/OR OMISSIONS. THESE DRAWINGS ARE DESIGN CONCEPT ONLY. EVERY EFFORT HAS BEEN MADE TO PREPARE ACCURATE DRAWINGS. HOWEVER, THE USER SHALL BE RESPONSIBLE FOR VERIFYING ALL DIMENSIONS AND BE RESPONSIBLE FOR ANY CHANGES OR ADJUSTMENTS REQUIRED DURING ACTUAL CONSTRUCTION. NO REPRESENTATION IS MADE OR IMPLIED FOR ACCURACY.

OFFICE: 763.757.5997
FAX: 763.757.4383
ANDOVER, MINNESOTA
WWW.CROIXDESIGN.COM



BUILT BY:
ELEVATE BUILDERS, LLC

SHEET
3
of 8
CADD FILE #
17215

NOTE!!!
MID-CHORD BEARING FLOOR TRUSSES ACROSS ENTIRE FRONT OF HOUSE (VERIFY TRUSS DESIGN w/ MANUFACTURER)

NOTE!!!
RIM AREAS ON LEFT & RIGHT SIDES OF HOUSE ARE TO BE CONSTRUCTED IN FIELD AS 2x8 LADDER TRUSS (SEE RIM DETAIL A-2)

FOUNDATION CONST. NOTES

- POURED CONCRETE FOUNDATION, VERIFY ALL WALL DIMENSIONS w/ FOUNDATION CONTRACTOR
- ALL EXTERIOR FOUNDATION DIMENSIONS ARE TO OUTSIDE OF EXTERIOR FOAM BOARD INSUL. OR SHEATHING, FOUNDATION TO BE HELD IN WHERE NOTED/SHOWN
- PROVIDE 2" R10 FOAM BOARD INSULATION • EXTERIOR FOUNDATION WALLS & 1" R5 FOAM BOARD INSULATION AT INTERIOR SIDE OF FOUNDATION WALLS (TYP.)
- INSULATION & AIR BARRIER TO BE CONT. OVER TOP OF FOUNDATION WALLS (TYP.)

DOOR & WINDOW NOTES

- SILVERLINE WINDOWS SPECIFIED, VERIFY ROUGH OPENING SIZES FOR DOORS & WINDOWS w/ MANUFACTURER
- WINDOWS WITH "*" REQUIRE A SASH STOPPER (TYP.)
- ALL WINDOW & DOOR OPENINGS TO HAVE (22x10) 2 GRADE HEADER OR BETTER (UNLESS NOTED OTHERWISE)
- TOP OF R.O. FOR ALL WINDOWS ON LOWER LEVEL TO BE 6'-10 1/2" FROM FLOOR (UNLESS NOTED OTHERWISE)

UNEXCAVATED

NOTE!!!
GARAGE TO BE DROPPED, CREATE SLAB LEDGE 24" FROM TOP OF 108" POURED FOUNDATION WALLS

NOTE!!!
NO BILL OVERHANG • REAR FOUNDATION WALKOUT WALLS (TYP)

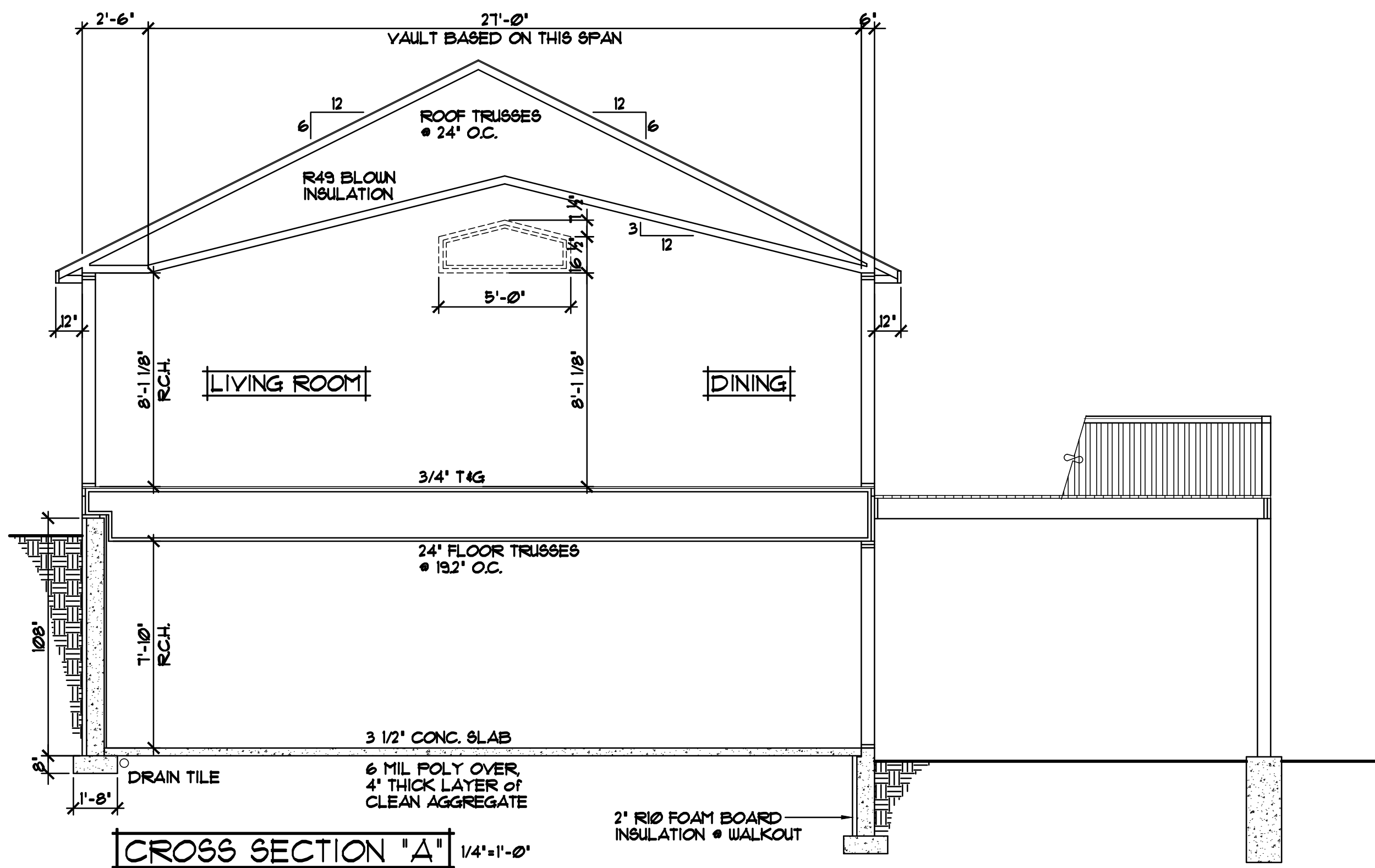
NOTE!!!
FOUNDATION TO STEP DOWN 12" FROM 108" TALL, FIELD VERIFY EXACT LOCATION OF STEP DOWN

NOTE!!!
FOUNDATION TO STEP DOWN 12" FROM 108" TALL, FIELD VERIFY EXACT LOCATION OF STEP DOWN

NOTE!!!
VERIFY ALL MECHANICAL EQUIPMENT LOCATIONS, LOCATIONS ON PLAN ARE REPRESENTATION ONLY

NOTE!!!
FRONT STOOP FOUNDATION HELD OUT BEYOND FRAMING BY 2" FOR STOOP BEARING (VERIFY DIMENSIONS w/ CONCRETE CONTRACTOR)

FOUNDATION PLAN 1/4" = 1'-0"
UNFINISHED BASEMENT

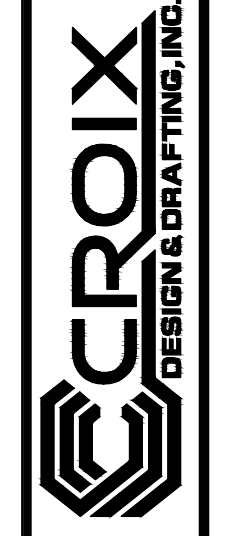


- ROOF CONSTRUCTION:**
- PREMANUFACTURED ROOF TRUSSES - ENGINEERED BY SUPPLIER
 - R49 BLOWN FIBERGLASS INSULATION
 - RIDGE VENT
 - 1/15" ROOF VENT AT SOFFITS
 - AIR CHUTE AT EACH TRUSS SPACE
 - 7/16" OSB ROOF SHEATHING
 - 15" ROOFING FELT
 - ICE & WATER MEMBRANE APPLIED 24" FAST EXTERIOR WALL
 - ASPHALT SHINGLES
- SOFFIT / FASCIA:**
- 2x6 SUB-FASCIA
 - MAINTENANCE FREE FASCIA COVER
 - MAINTENANCE FREE VENTED SOFFIT
- WALL CONSTRUCTION:**
- HOUSE WRAP
 - 7/16" OSB SHEATHING
 - 2x6 STUDS @ 16" O.C.
 - WINDOWS PER SPEC'S.
 - R-21 FG. BATT INSULATION
 - 4 MIL POLY VAPOR BARRIER
 - 1/2" GYPSUM BOARD
- RIM AREA CONSTRUCTION:**
- CLOSED CELL SPRAYED FOAM INSUL. R20 (MINIMUM) @ RIM AREA AND R30 (MINIMUM) @ CANTS.
- WALL CONSTRUCTION:**
- SIMILAR TO ABOVE
- BILL CONSTRUCTION:**
- 2x8 BILL PLATE & SEALER (2x6 PLATE @ WALKOUT AREAS)
 - 1/2" ANCHOR BOLTS @ 48" O.C.
- FOUNDATION INSULATION:**
- FOUNDATION EXTERIOR- 2" R-10 RIGID FOAM BOARD INSULATION
 - FOUNDATION INTERIOR- 1" R-5 RIGID FOAM BOARD INSULATION

REVISIONS
XXXXXX 0000 BY:XX
XXXXXX 0000 BY:XX

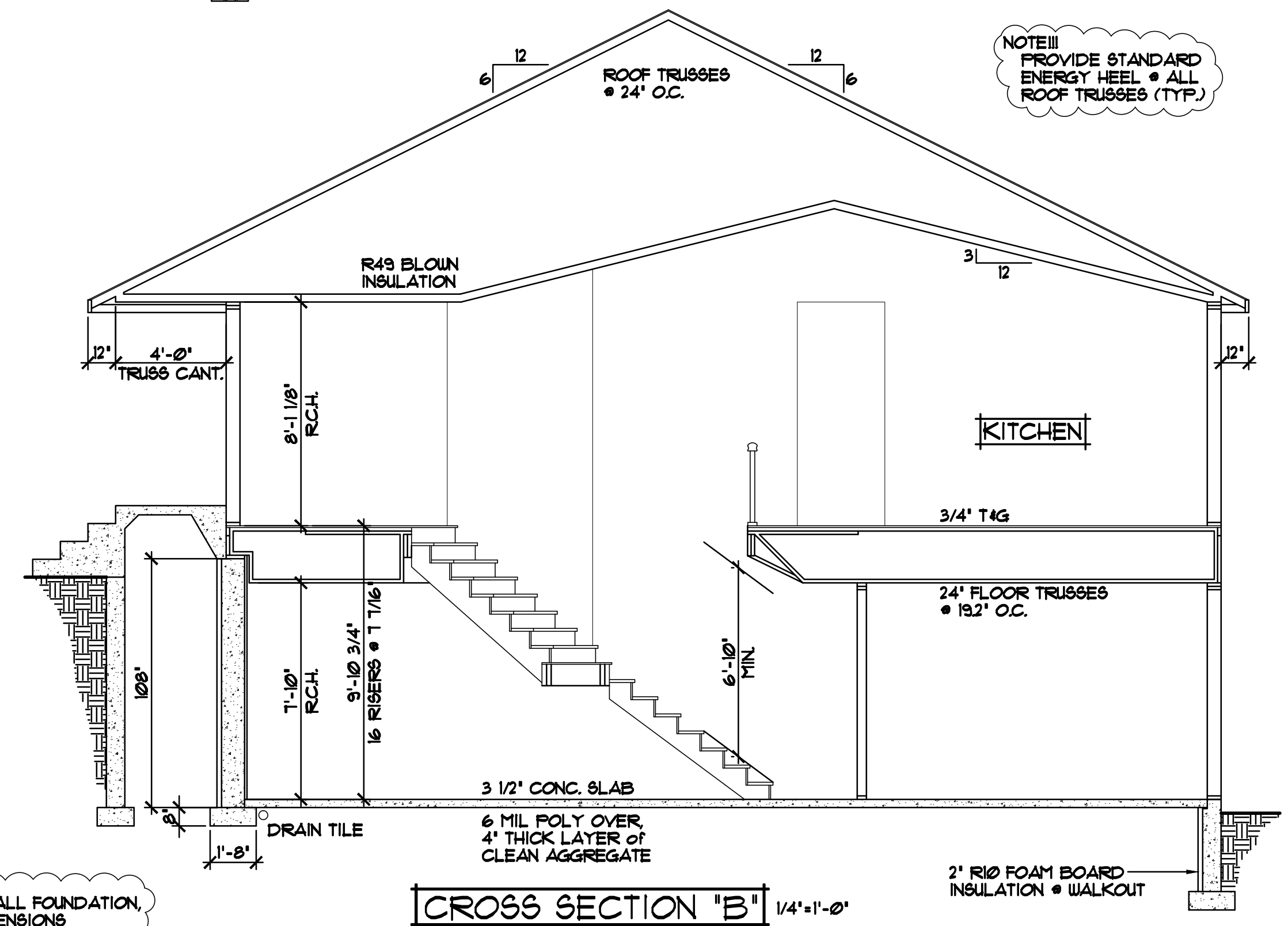
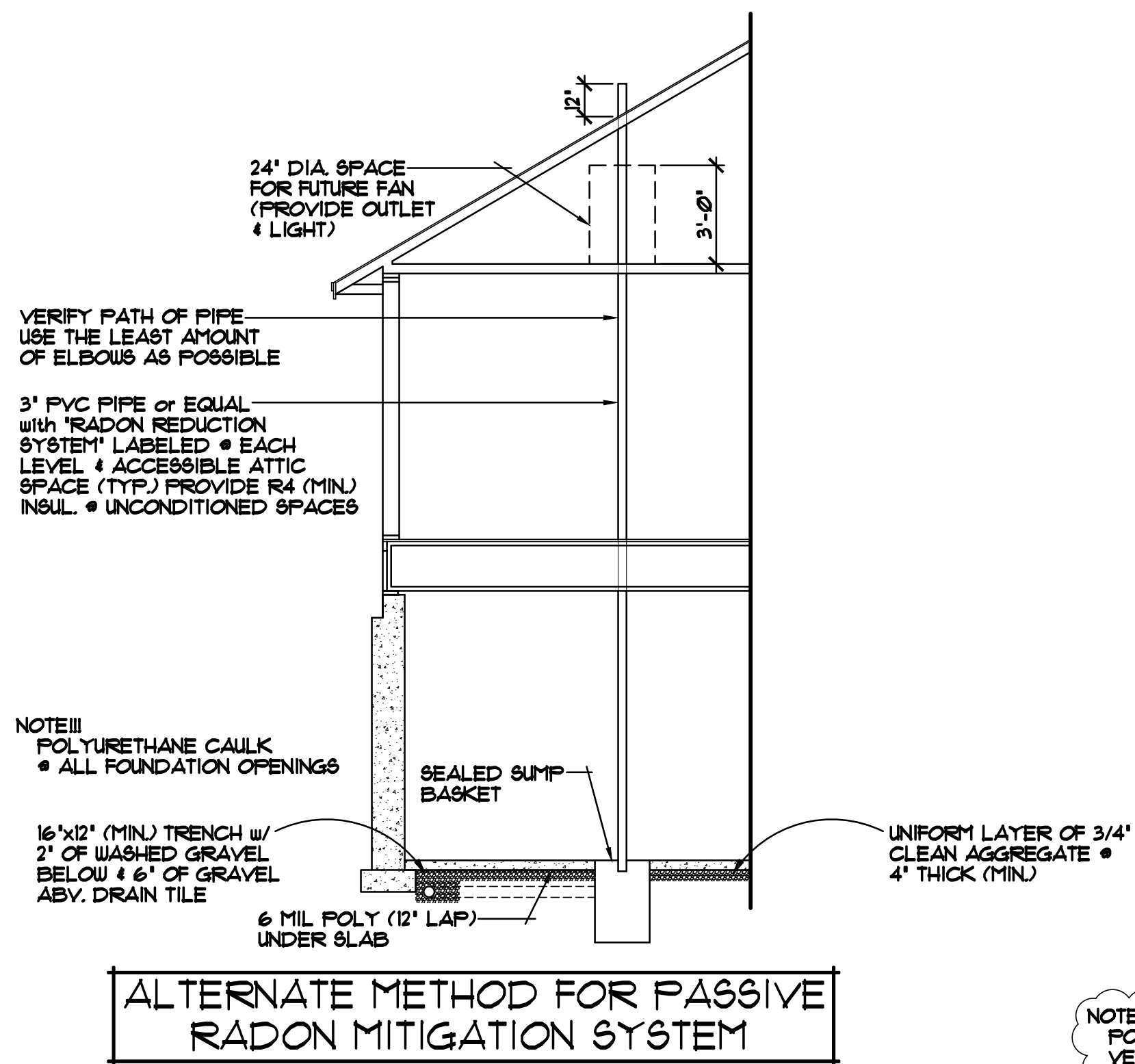
SPECIAL NOTICE:
CROIX DESIGN AND DRAFTING, INC. ACCEPTS NO RESPONSIBILITY FOR ERRORS AND/OR OMISSIONS. THESE DRAWINGS ARE DESIGN CONCEPT ONLY. EVERY EFFORT HAS BEEN MADE TO PREVENT ERRORS, BUT THE USER SHALL BE RESPONSIBLE FOR VERIFYING ALL DIMENSIONS AND CONDITIONS. THE USER SHALL BE RESPONSIBLE FOR ANY CHANGES OR ADJUSTMENTS REQUIRED DURING CONSTRUCTION. NO REPRESENTATION IS MADE OR IMPLIED FOR ACCURACY.

OFFICE: 763.757.5987
FAX: 763.757.4383
ANDOVER, MINNESOTA
WWW.CROIXDESIGN.COM



BUILT BY:
ELEVATE BUILDERS, LLC

SHEET
5
OF 8
CADD FILE #
17215

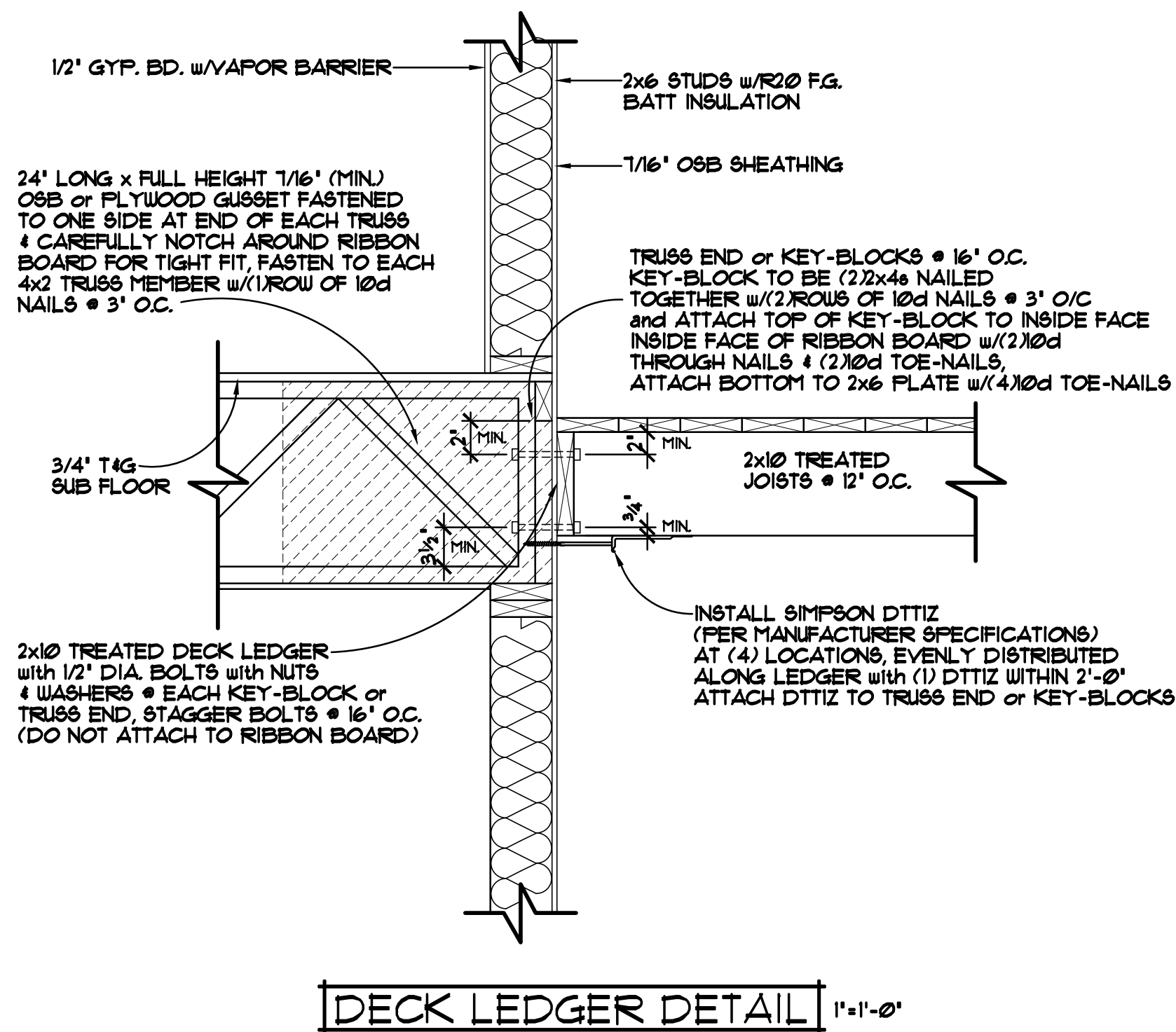
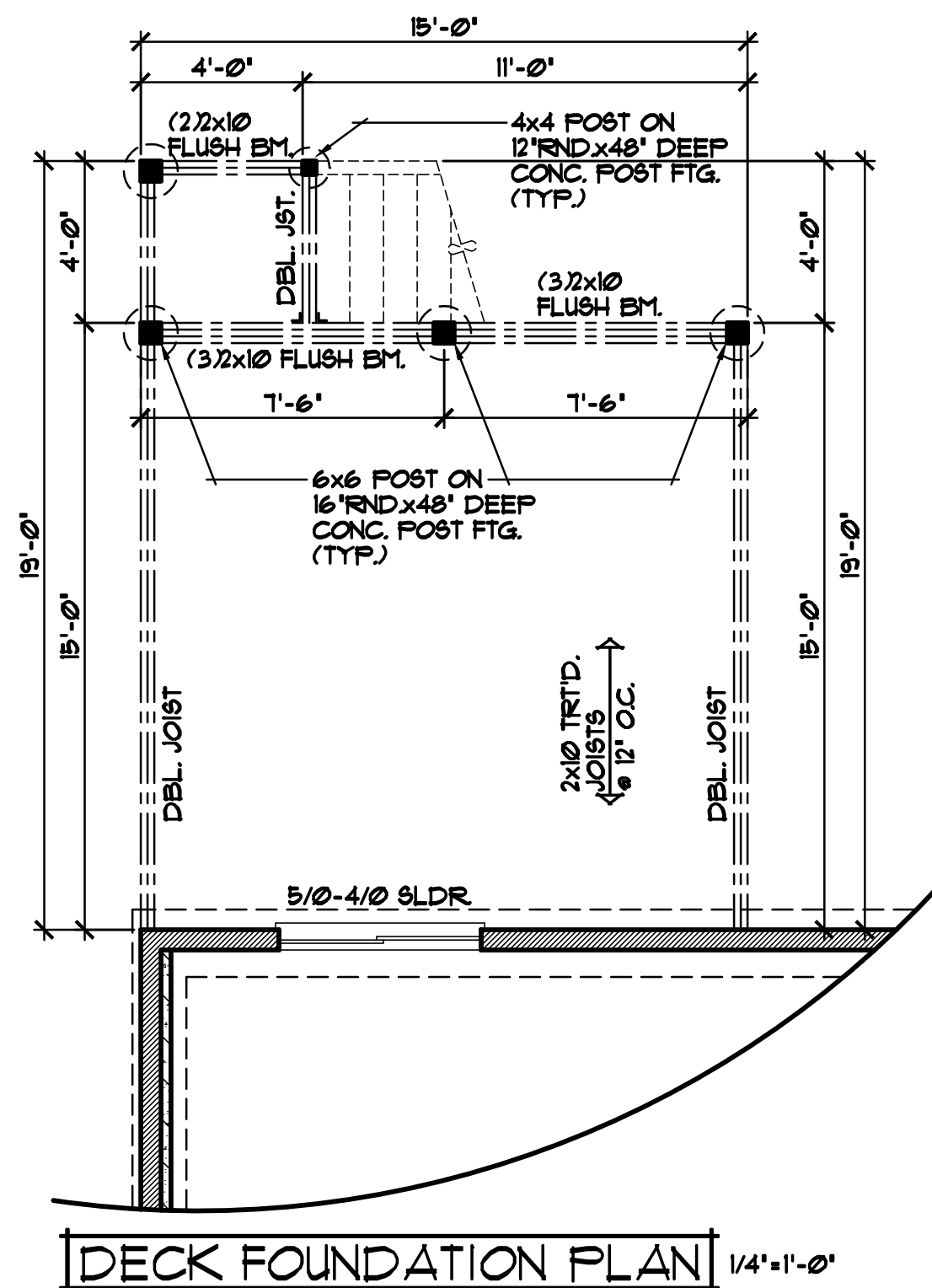
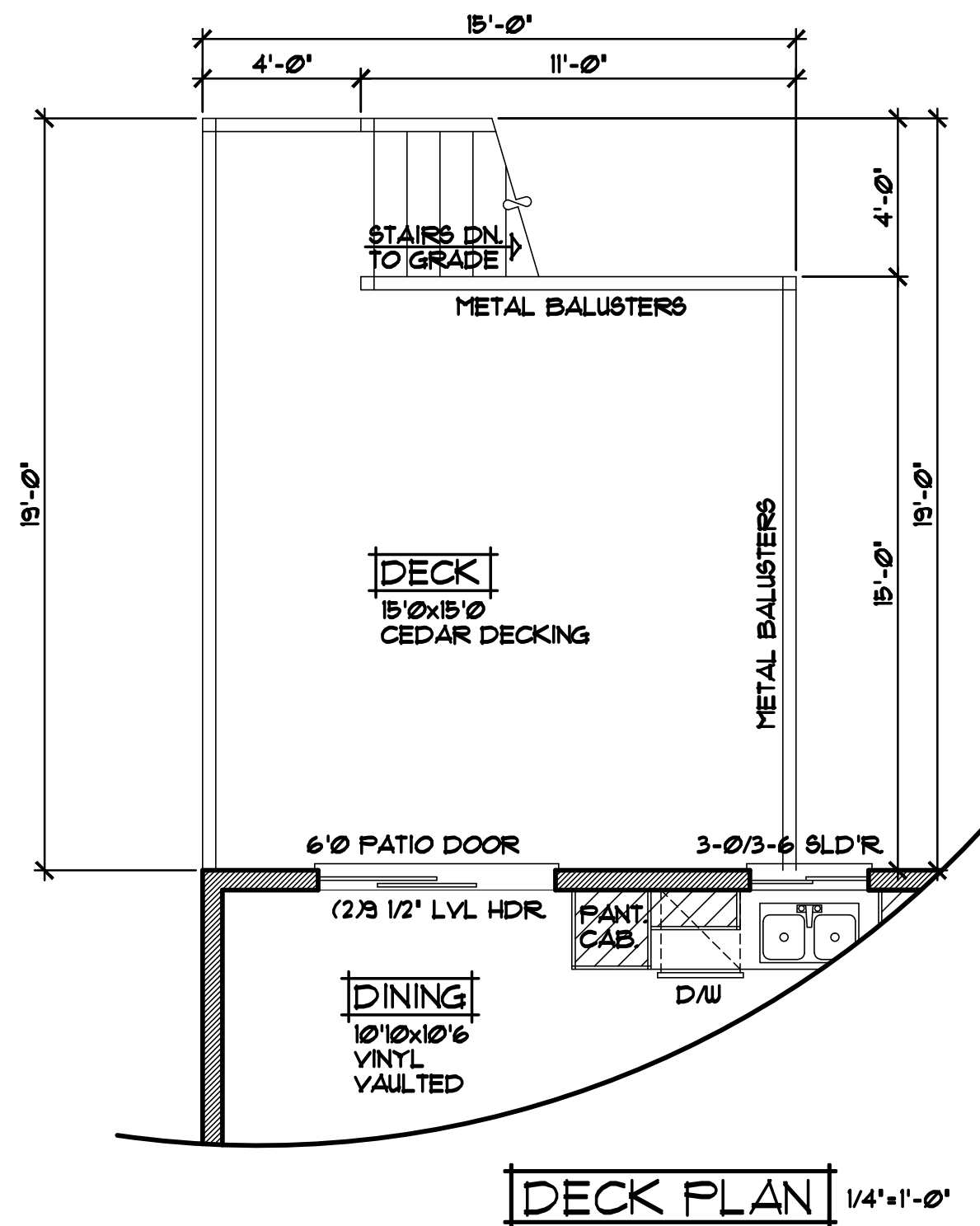
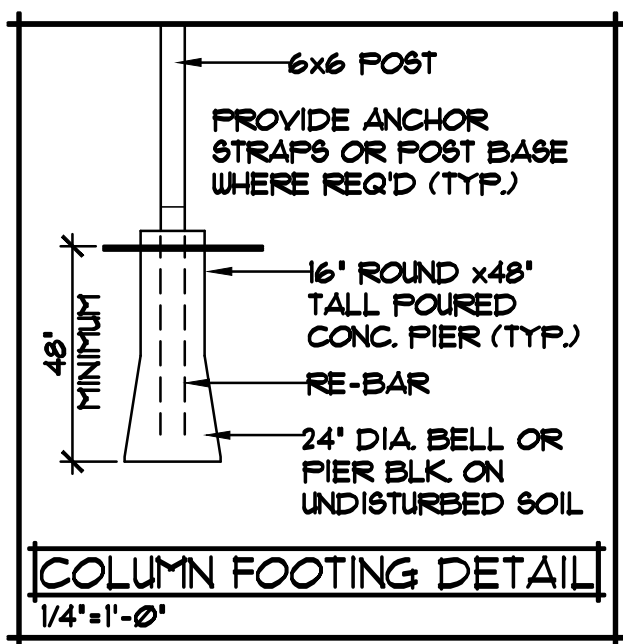


NOTE III
POURED CONC. WALL FOUNDATION,
VERIFY WALL DIMENSIONS
w/FOUNDATION CONTRACTOR

NOTE III
PROVIDE STANDARD
ENERGY HEEL @ ALL
ROOF TRUSSES (TYP.)

**ALTERNATE METHOD FOR PASSIVE
RADON MITIGATION SYSTEM**

CROSS SECTION "B" 1/4"=1'-0"



REVISIONS
XXXXXX 0000 BY:XX
XXXXXX 0000 BY:XX

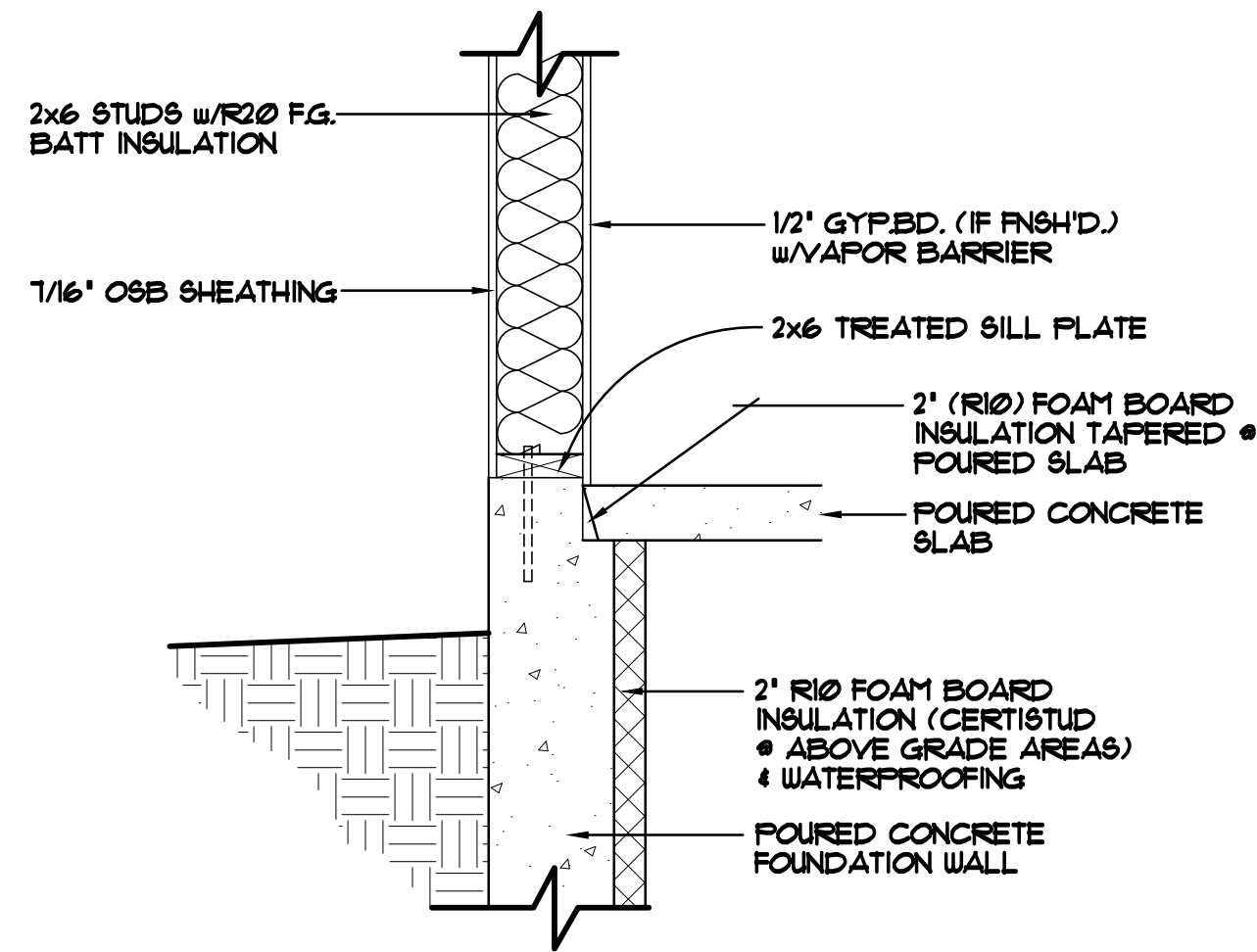
SPECIAL NOTICE:
 CROIX DESIGN AND DRAFTING, INC. ACCEPTS NO RESPONSIBILITY FOR ERRORS AND/OR OMISSIONS. THESE DRAWINGS ARE DESIGN CONCEPT ONLY. EVERY EFFORT HAS BEEN MADE TO PREPARE THESE DRAWINGS ACCURATELY AND COMPLETELY. THE USER SHALL BE RESPONSIBLE FOR VERIFYING ALL DIMENSIONS AND CONDITIONS BEFORE CONSTRUCTION. THE USER SHALL BE RESPONSIBLE FOR ANY CHANGES OR ADJUSTMENTS REQUIRED DURING CONSTRUCTION. NO REPRESENTATION IS MADE OR IMPLIED FOR ACCURACY.

OFFICE: 763.757.5997
 FAX: 763.757.4383
 ANDOVER, MINNESOTA
 WWW.CROIXDESIGN.COM



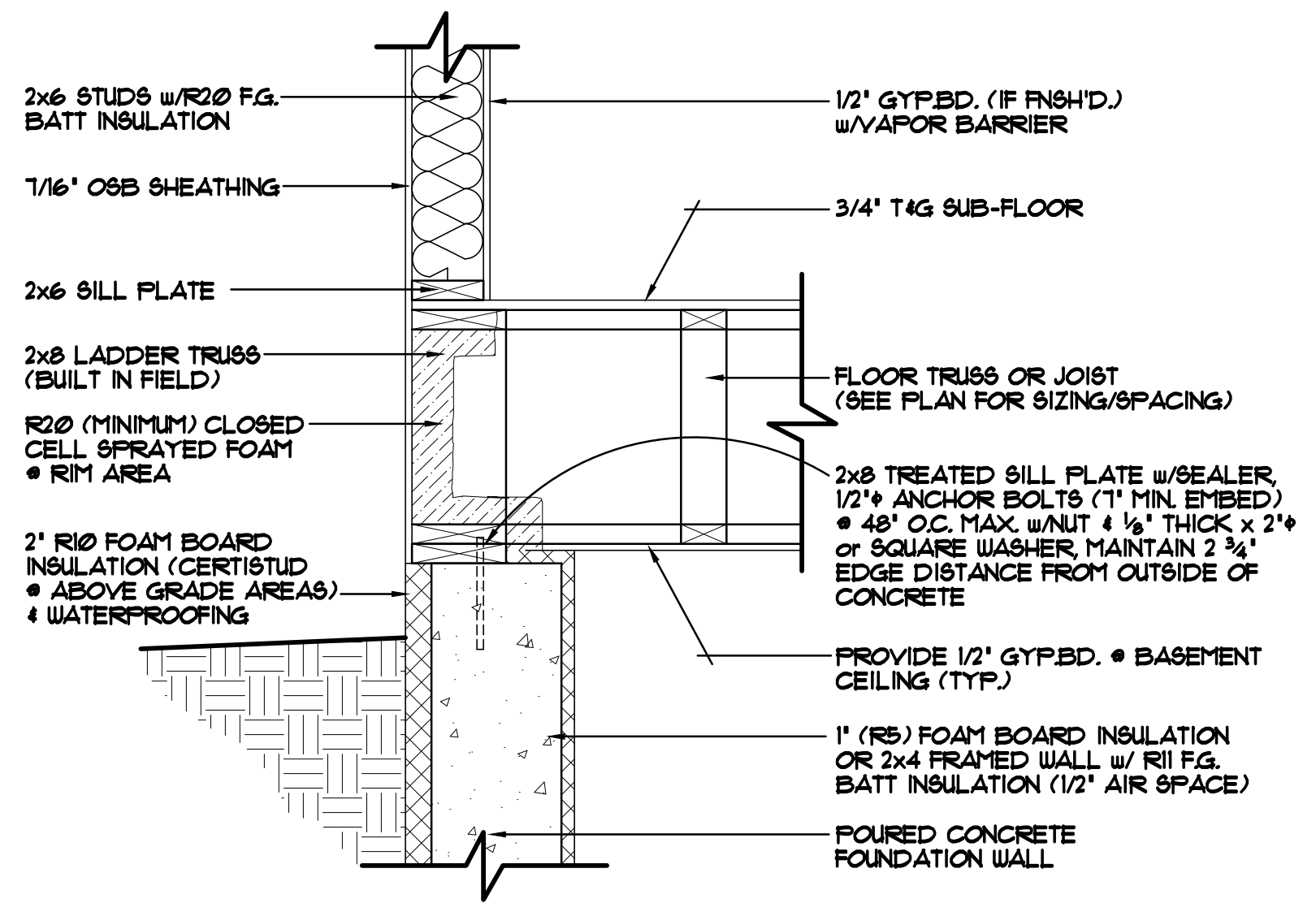
BUILT BY:
ELEVATE BUILDERS, LLC

SHEET
 6
 OF 8
 CADD FILE #
 15292



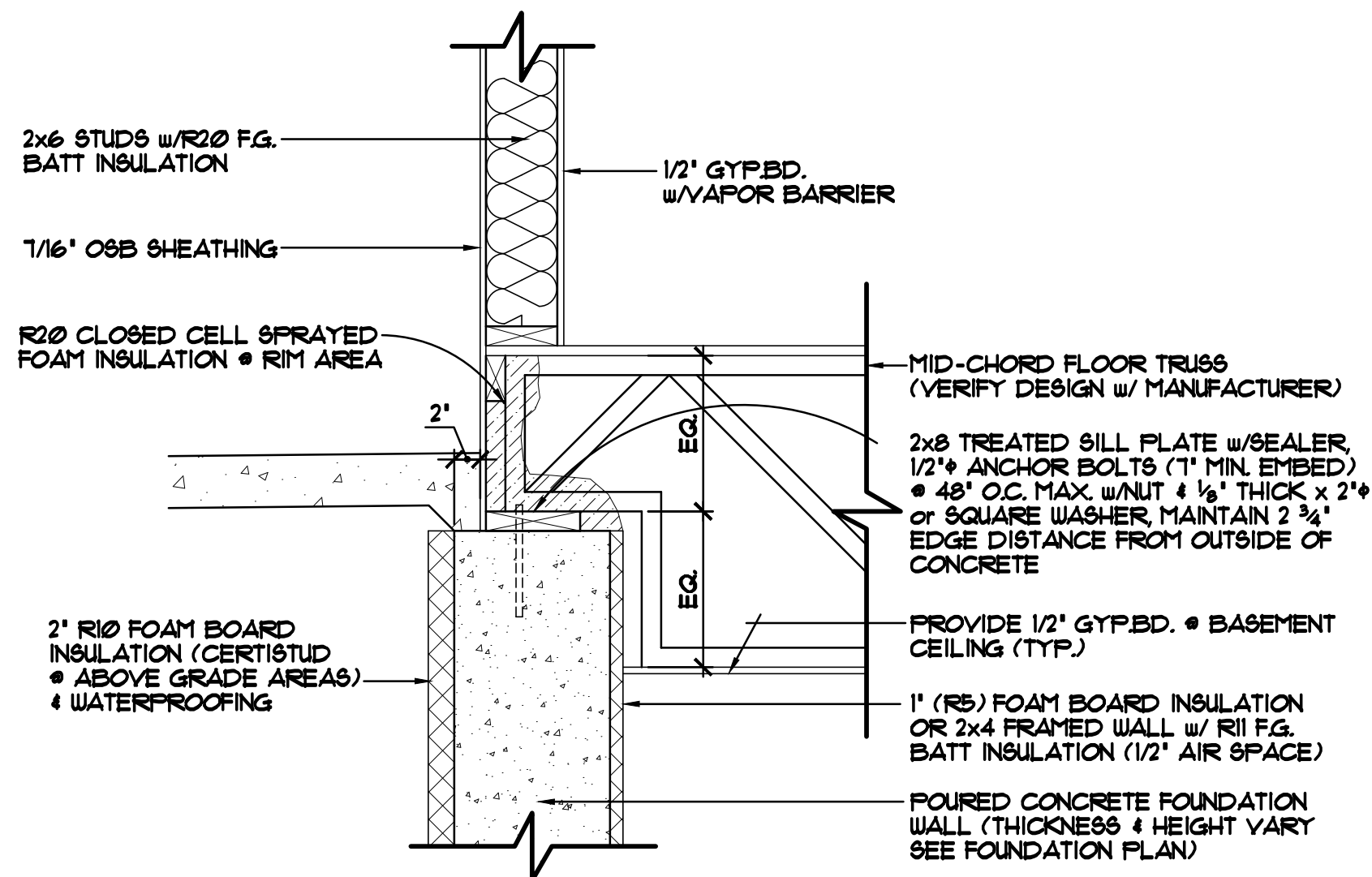
FOUNDATION/RIM AREA DETAIL "A-1" 1"=1'-0"

STANDARD WALKOUT SILL/FOUNDATION AREA
FOUNDATION NOT HELD IN



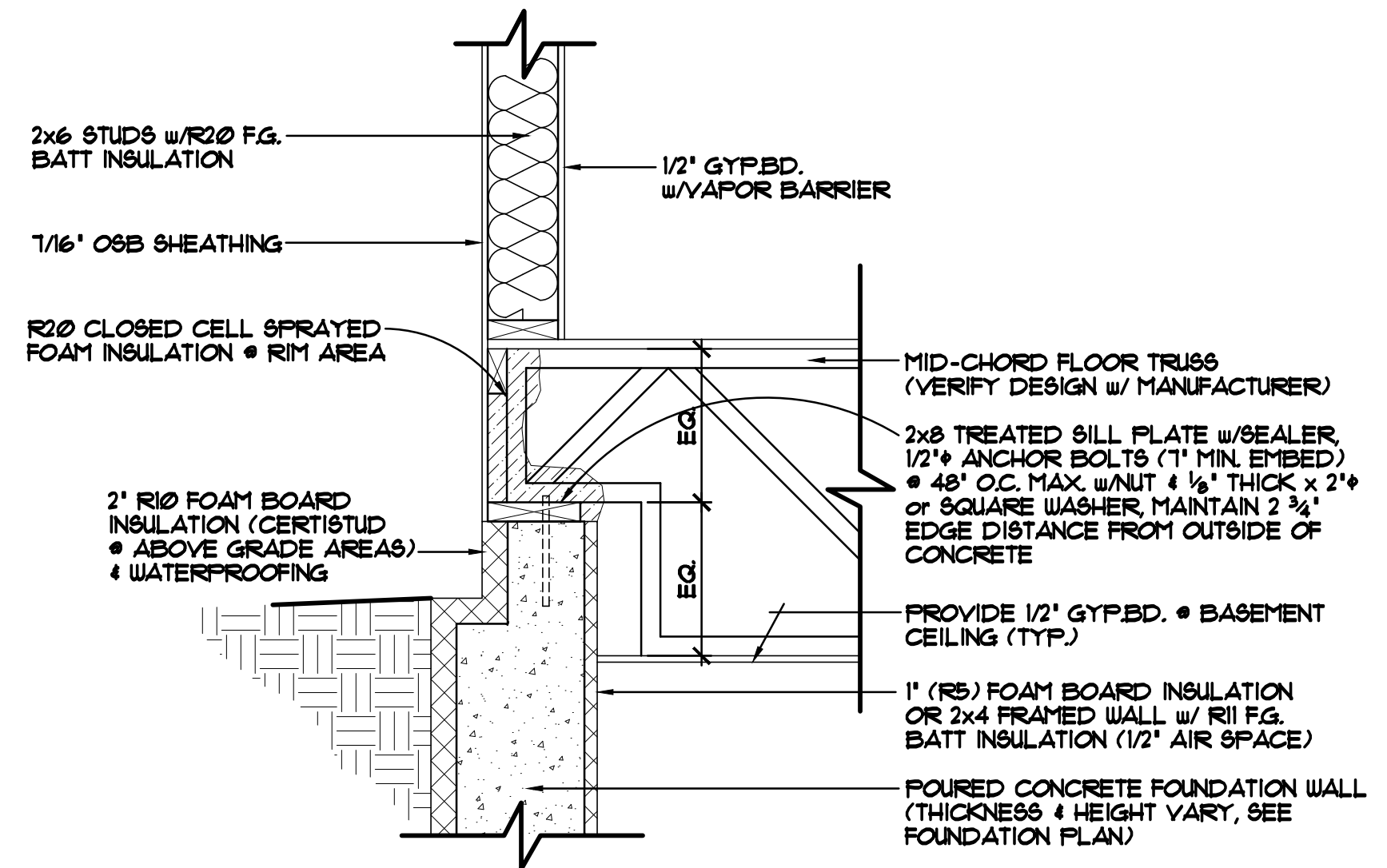
FOUNDATION/RIM AREA DETAIL "A-2" 1"=1'-0"

STANDARD RIM AREA, TRUSSES/JOISTS PARALLEL TO FOUNDATION WALL
FOUNDATION HELD IN 2"



FOUNDATION/RIM AREA DETAIL "A-3" 1"=1'-0"

RIM AREA WITH MID-CHORD BEARING TRUSSES
FOUNDATION HELD OUT 2" FOR FRONT STOOP BEARING
(VERIFY TRUSS DESIGN w/ TRUSS MANUFACTURER)



FOUNDATION/RIM AREA DETAIL "A-4" 1"=1'-0"

RIM AREA WITH MID CHORD BEARING TRUSS
FOUNDATION HELD IN 2"
(VERIFY TRUSS DESIGN w/ TRUSS MANUFACTURER)

REVISIONS

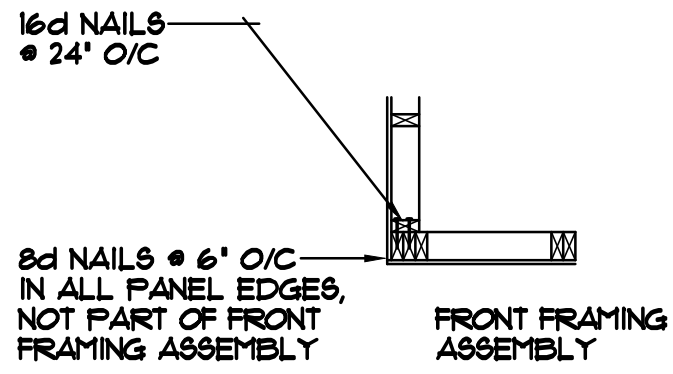
XXXXXX	
0000	BY:XX
XXXXXX	
0000	BY:XX

SPECIAL NOTICE:
CROIX DESIGN AND DRAFTING, INC. ACCEPTS NO RESPONSIBILITY FOR ERRORS AND/OR OMISSIONS. THESE DRAWINGS ARE DESIGN CONCEPT ONLY. EVERY EFFORT HAS BEEN MADE TO PREVENT ERRORS, BUT THE USER MUST VERIFY ALL DIMENSIONS AND CONDITIONS BEFORE CONSTRUCTION. THE USER SHALL BE RESPONSIBLE FOR ANY CHANGES OR ADJUSTMENTS REQUIRED DURING CONSTRUCTION. NO REPRESENTATION IS MADE OR IMPLIED FOR ACCURACY.

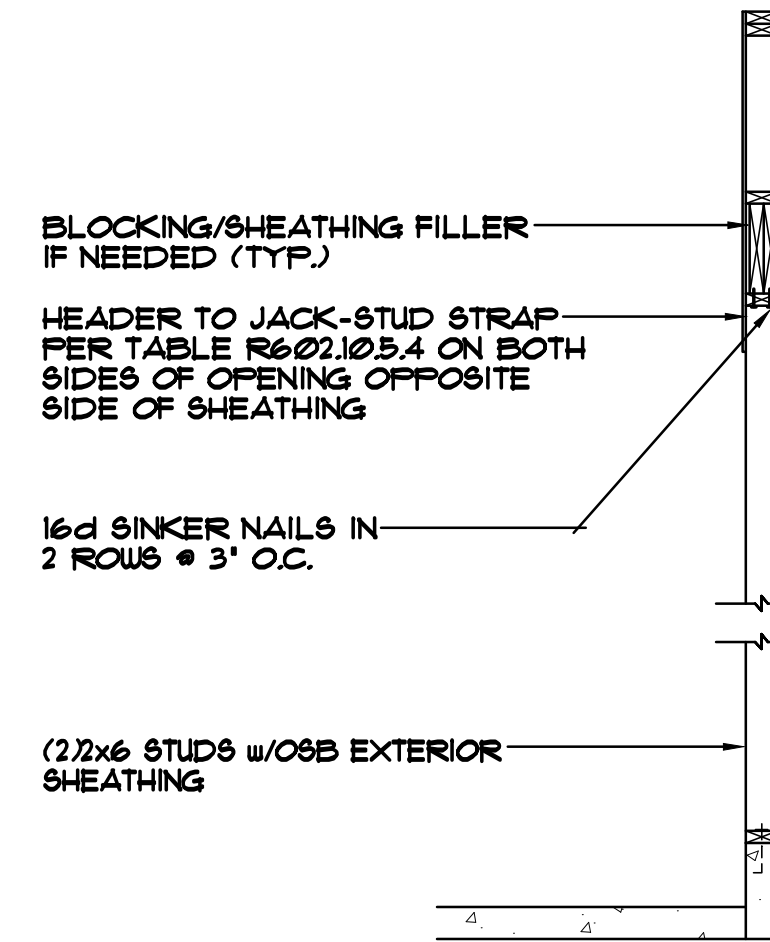
OFFICE: 763.757.5997
FAX: 763.757.4383
ANDOVER, MINNESOTA
WWW.CROIXDESIGN.COM



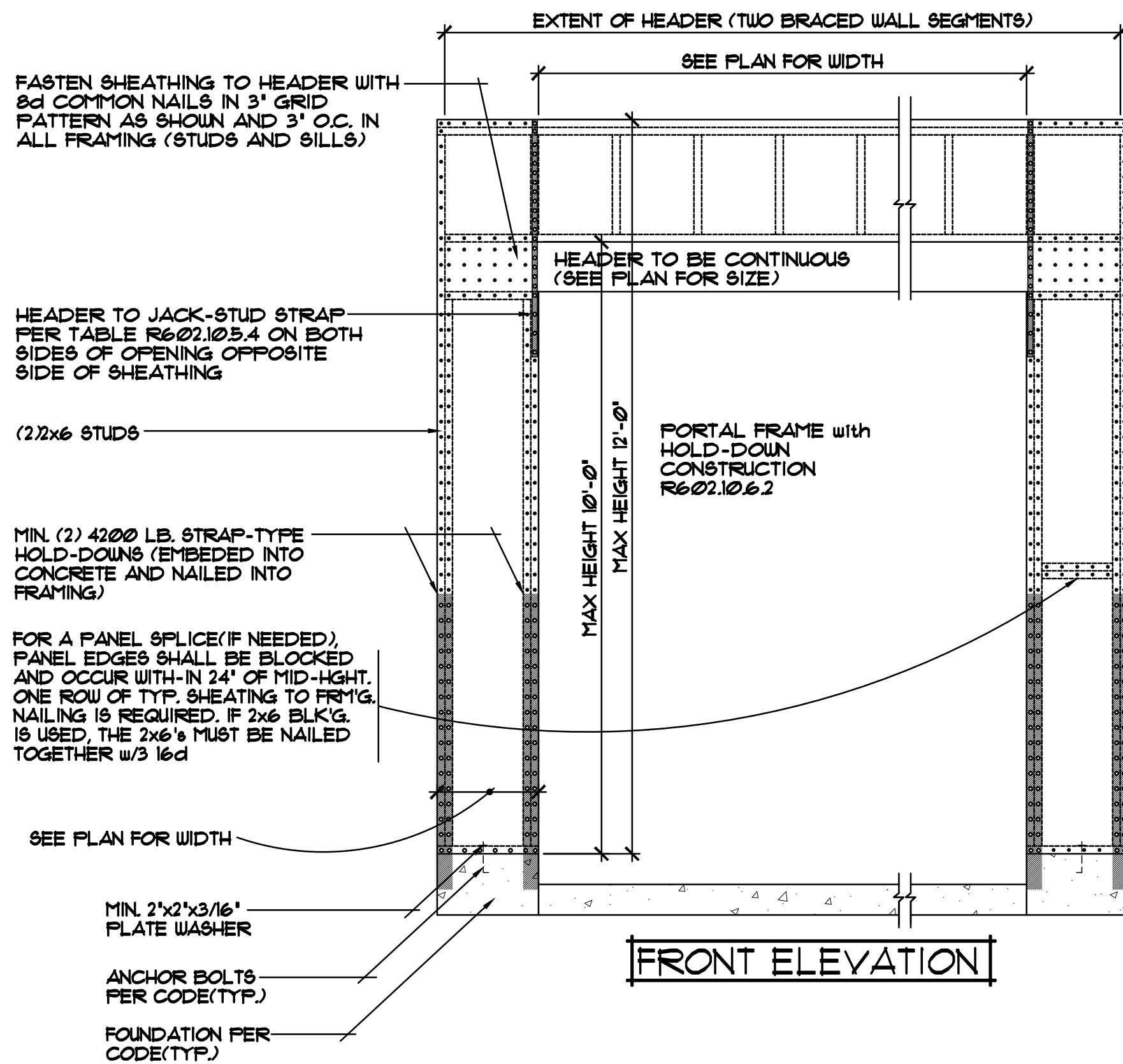
BUILT BY:
ELEVATE BUILDERS, LLC



CORNER FRAMING DETAIL



SIDE ELEVATION



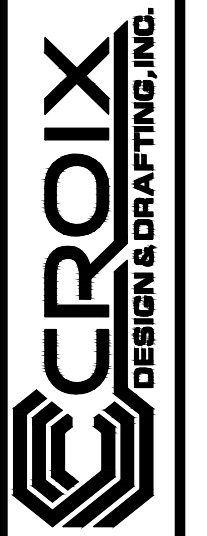
FRONT ELEVATION

PORTAL FRAMING WITH HOLD-DOWNS CONSTRUCTION 1/2"=1'-0"

REVISIONS
XXXXXXXX 00000 BY:XX
XXXXXXXX 00000 BY:XX

SPECIAL NOTICE:
CROIX DESIGN AND DRAFTING, INC. ACCEPTS NO RESPONSIBILITY FOR ERRORS AND/OR OMISSIONS. THESE DRAWINGS ARE DESIGN CONCEPT ONLY. EVERY EFFORT HAS BEEN MADE TO PREPARE THESE DRAWINGS ACCURATELY. HOWEVER, THE USER SHALL BE RESPONSIBLE FOR VERIFYING ALL DIMENSIONS AND BEING RESPONSIBLE FOR ANY CHANGES OR ADJUSTMENTS REQUIRED DURING ACTUAL CONSTRUCTION. NO REPRESENTATION IS MADE OR IMPLIED FOR ACCURACY.

OFFICE: 763.757.5997
FAX: 763.757.4383
ANDOVER, MINNESOTA
WWW.CROIXDESIGN.COM



BUILT BY:
ELEVATE BUILDERS, LLC

SHEET
8
CADD FILE #
17215