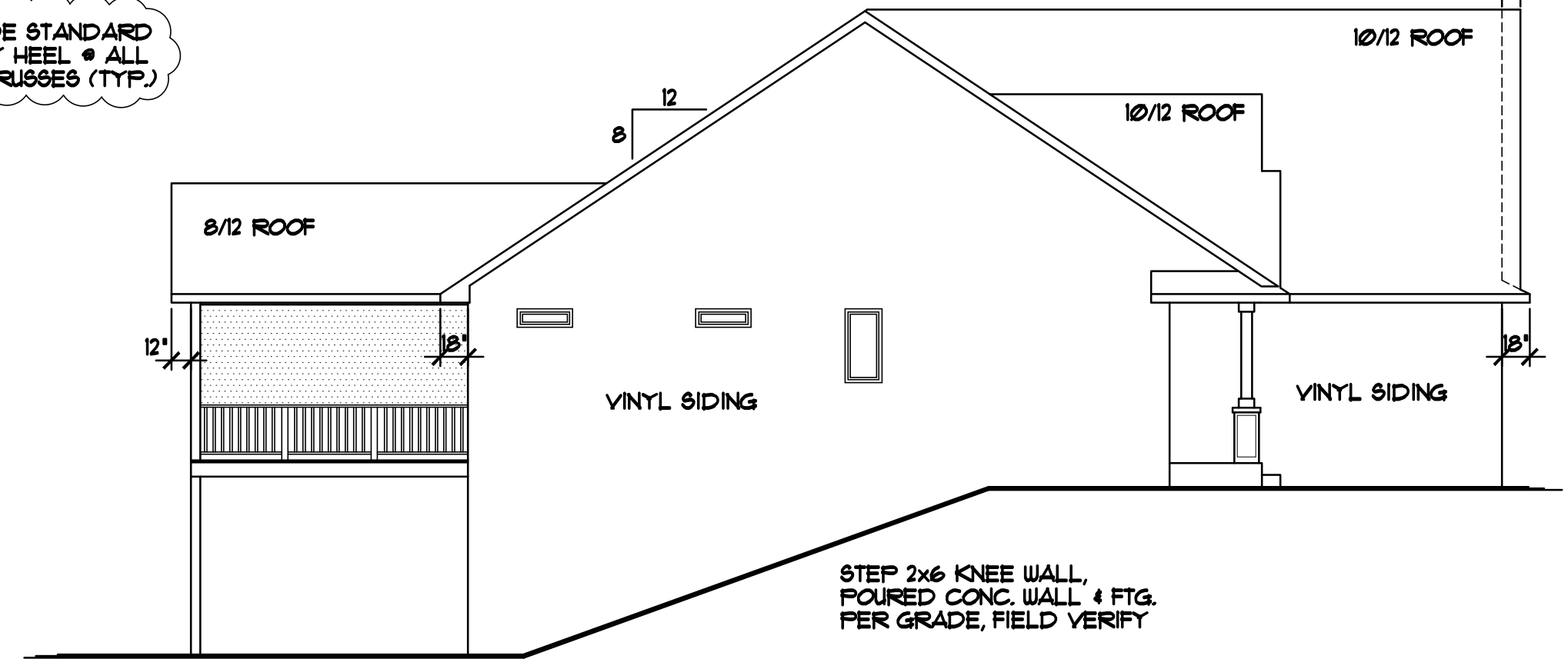
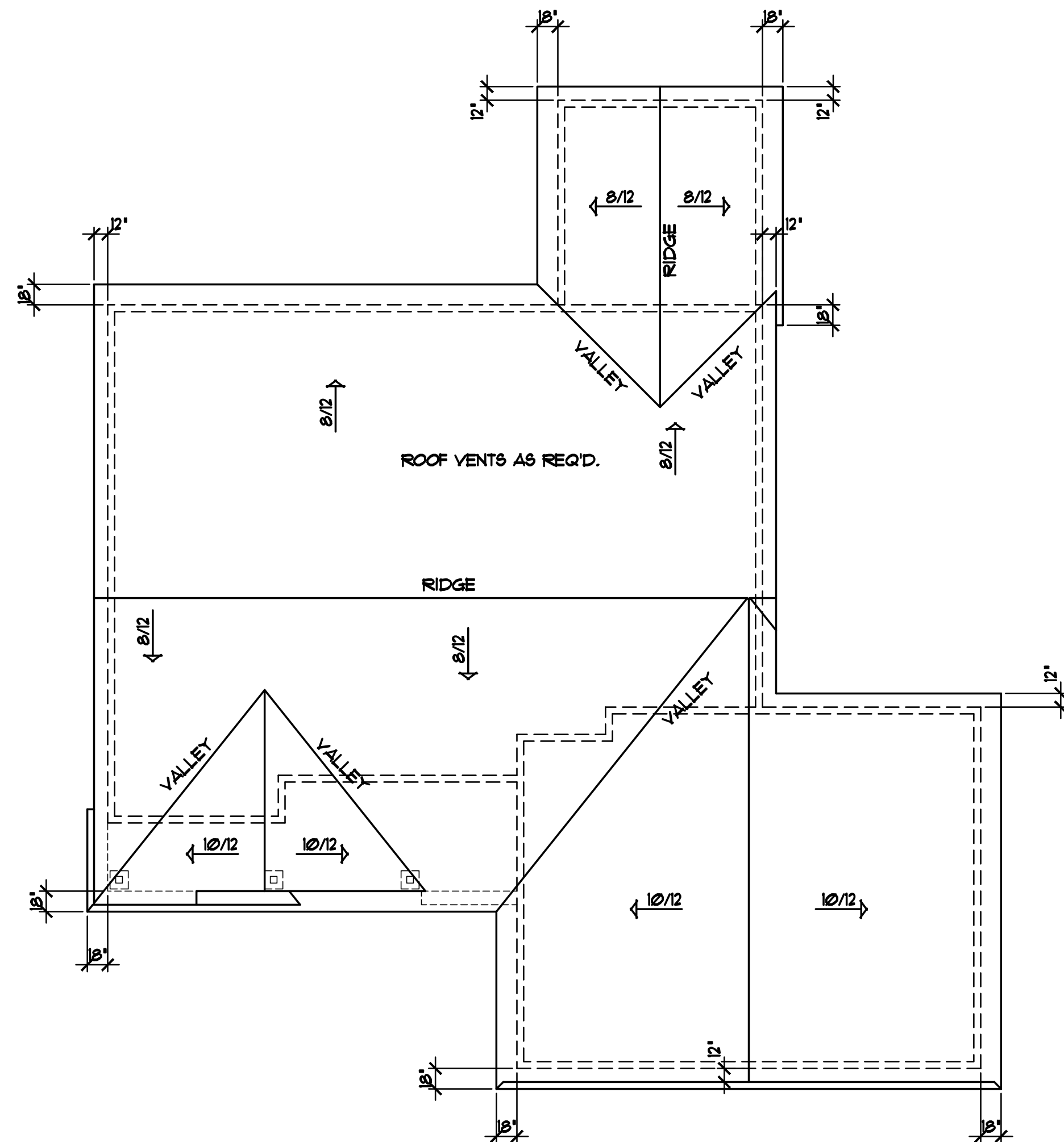


RIGHT ELEVATION 1/8"=1'-0"

NOTE!!!
PROVIDE STANDARD ENERGY HEEL @ ALL ROOF TRUSSES (TYP.)

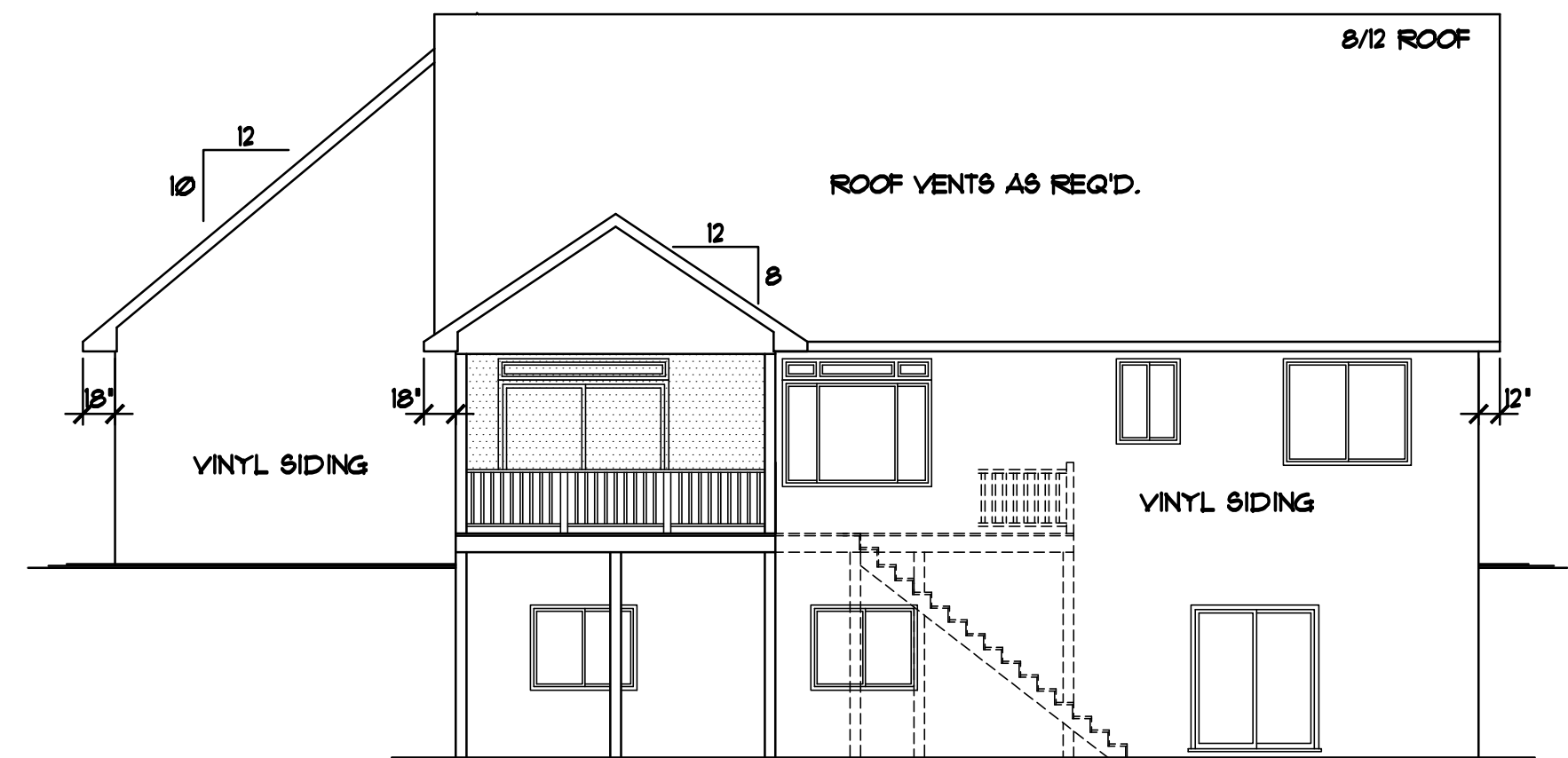


LEFT ELEVATION 1/8"=1'-0"



BIRD'S-EYE ROOF PLAN 1/8"=1'-0"

NOTE!!!
ADJUST HEEL HEIGHT @ MAIN LEVEL 10/12 TRUSSES w/ 18' OVERHANG TO MATCH 8/12 TRUSSES w/18' OVERHANG (TYP.)



REAR ELEVATION 1/8"=1'-0"
SHOWN w/ OPTIONAL DECK

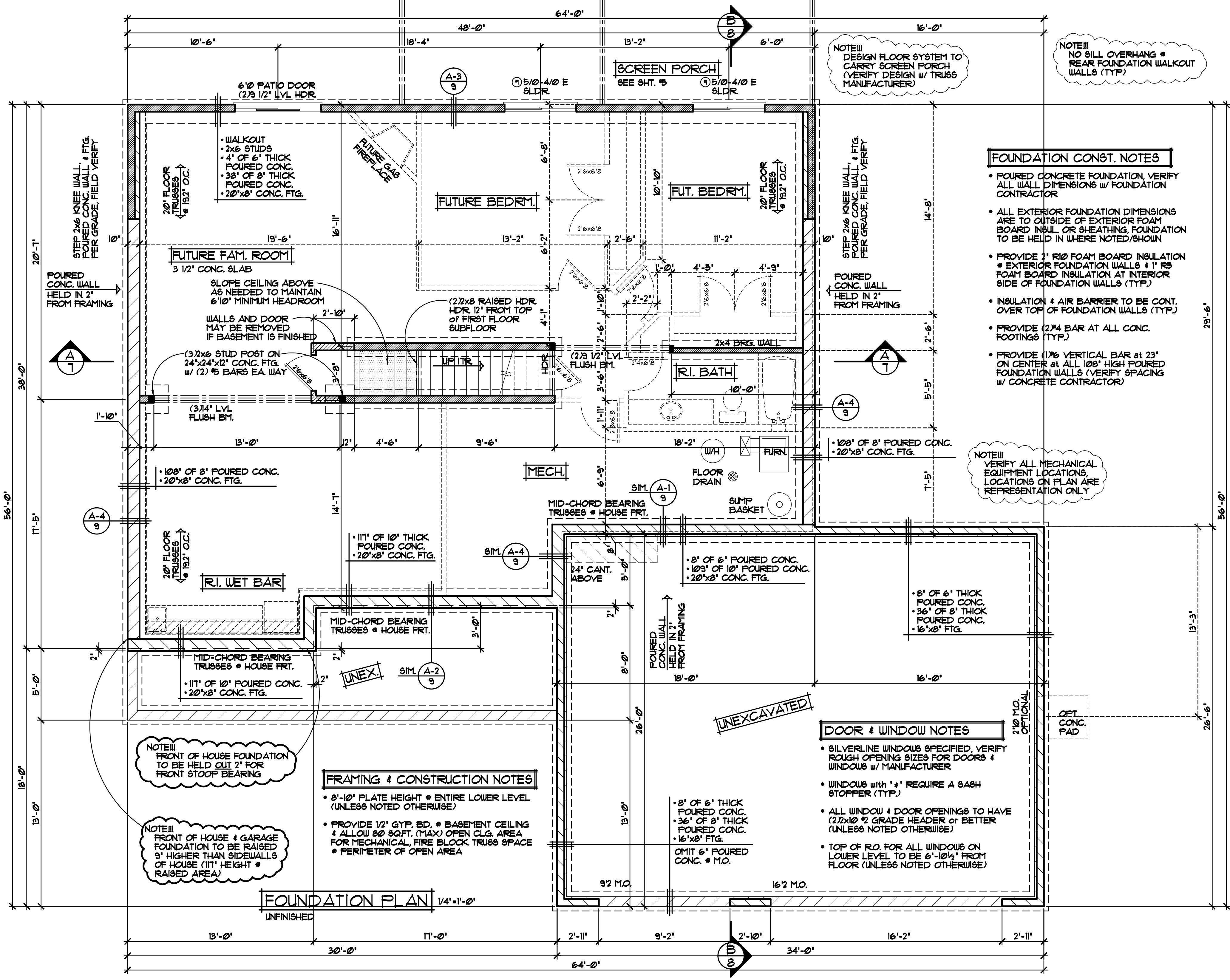
SPECIAL NOTICE:
CROIX DESIGN AND DRAFTING, INC. ACCEPTS NO RESPONSIBILITY FOR ERRORS AND/OR OMISSIONS. THESE DRAWINGS ARE DESIGN CONCEPT ONLY. EVERY EFFORT HAS BEEN MADE TO PREVENT ERRORS, BUT THE USER MUST CHECK ALL DIMENSIONS AND CONDITIONS BEFORE CONSTRUCTION AND BE RESPONSIBLE FOR ANY CHANGES OR ADJUSTMENTS REQUIRED DURING ACTUAL CONSTRUCTION. NO REPRESENTATION IS MADE OR IMPLIED FOR ACCURACY.

OFFICE: 763.757.5997
FAX: 763.757.4383
ANDOVER, MINNESOTA
WWW.CROIXDESIGN.COM



BUILT BY:
ELEVATE BUILDERS, LLC

SHEET
2
of 9
CADD FILE #
11023



NOTE!!!
DESIGN FLOOR SYSTEM TO
CARRY SCREEN PORCH
(VERIFY DESIGN W/ TRUSS
MANUFACTURER)

NOTE!!!
NO SILL OVERHANG •
REAR FOUNDATION WALKOUT
WALLS (TYP)

FOUNDATION CONST. NOTES

- POURED CONCRETE FOUNDATION, VERIFY ALL WALL DIMENSIONS w/ FOUNDATION CONTRACTOR
- ALL EXTERIOR FOUNDATION DIMENSIONS ARE TO OUTSIDE OF EXTERIOR FOAM BOARD INSUL. OR SHEATHING, FOUNDATION TO BE HELD IN WHERE NOTED/SHOWN
- PROVIDE 2" R10 FOAM BOARD INSULATION • EXTERIOR FOUNDATION WALLS & 1" R5 FOAM BOARD INSULATION AT INTERIOR SIDE OF FOUNDATION WALLS (TYP.)
- INSULATION & AIR BARRIER TO BE CONT. OVER TOP OF FOUNDATION WALLS (TYP.)
- PROVIDE (2) #4 BAR AT ALL CONC. FOOTINGS (TYP.)
- PROVIDE (1) #6 VERTICAL BAR AT 23' ON CENTER AT ALL 108" HIGH POURED FOUNDATION WALLS (VERIFY SPACING W/ CONCRETE CONTRACTOR)

NOTE!!!
VERIFY ALL MECHANICAL
EQUIPMENT LOCATIONS,
LOCATIONS ON PLAN ARE
REPRESENTATION ONLY

DOOR & WINDOW NOTES

- SILVERLINE WINDOWS SPECIFIED, VERIFY ROUGH OPENING SIZES FOR DOORS & WINDOWS w/ MANUFACTURER
- WINDOWS with "x" REQUIRE A SASH STOPPER (TYP.)
- ALL WINDOW & DOOR OPENINGS TO HAVE (2) 2x10 2 GRADE HEADER OR BETTER (UNLESS NOTED OTHERWISE)
- TOP OF R.O. FOR ALL WINDOWS ON LOWER LEVEL TO BE 6'-10 1/2" FROM FLOOR (UNLESS NOTED OTHERWISE)

FRAMING & CONSTRUCTION NOTES

- 8'-10" PLATE HEIGHT • ENTIRE LOWER LEVEL (UNLESS NOTED OTHERWISE)
- PROVIDE 1/2" GYP. BD. • BASEMENT CEILING & ALLOW 80 SQFT. (MAX) OPEN CLG. AREA FOR MECHANICAL, FIRE BLOCK TRUSS SPACE • PERIMETER OF OPEN AREA

NOTE!!!
FRONT OF HOUSE FOUNDATION
TO BE HELD OUT 2" FOR
FRONT STOOP BEARING

NOTE!!!
FRONT OF HOUSE & GARAGE
FOUNDATION TO BE RAISED
9" HIGHER THAN SIDEWALLS
OF HOUSE (11" HEIGHT •
RAISED AREA)

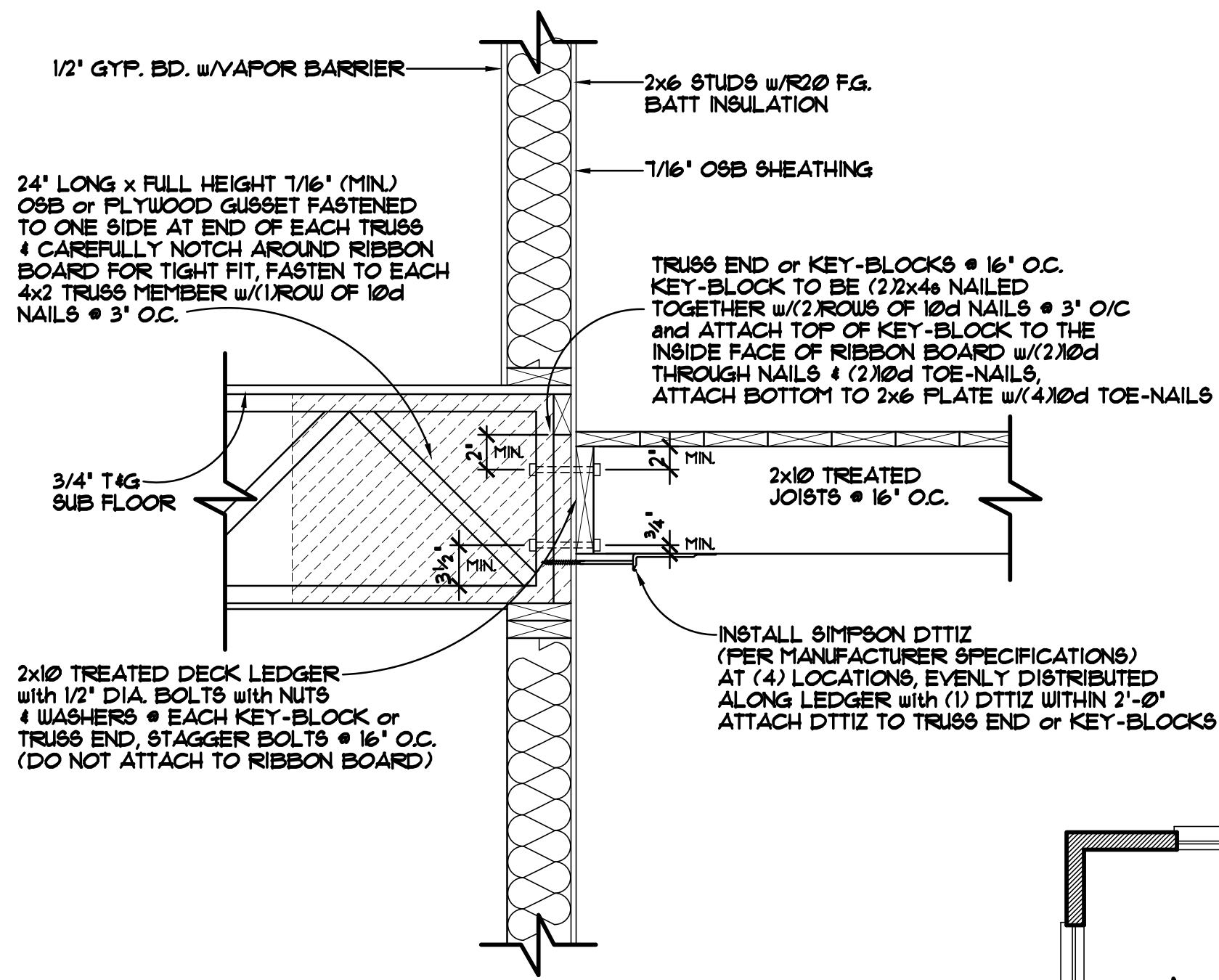
FOUNDATION PLAN 1/4"=1'-0"

SPECIAL NOTICE:
CROIX DESIGN AND DRAFTING, INC. ACCEPTS NO RESPONSIBILITY FOR ERRORS AND/OR OMISSIONS. THESE DRAWINGS ARE DESIGN CONCEPT ONLY. EVERY EFFORT HAS BEEN MADE TO PREVENT ERRORS AND OMISSIONS. THE USER OF THESE DRAWINGS SHALL BE RESPONSIBLE FOR VERIFYING ALL DIMENSIONS AND CONDITIONS BEFORE CONSTRUCTION. NO REPRESENTATION IS MADE OR IMPLIED FOR ACCURACY.

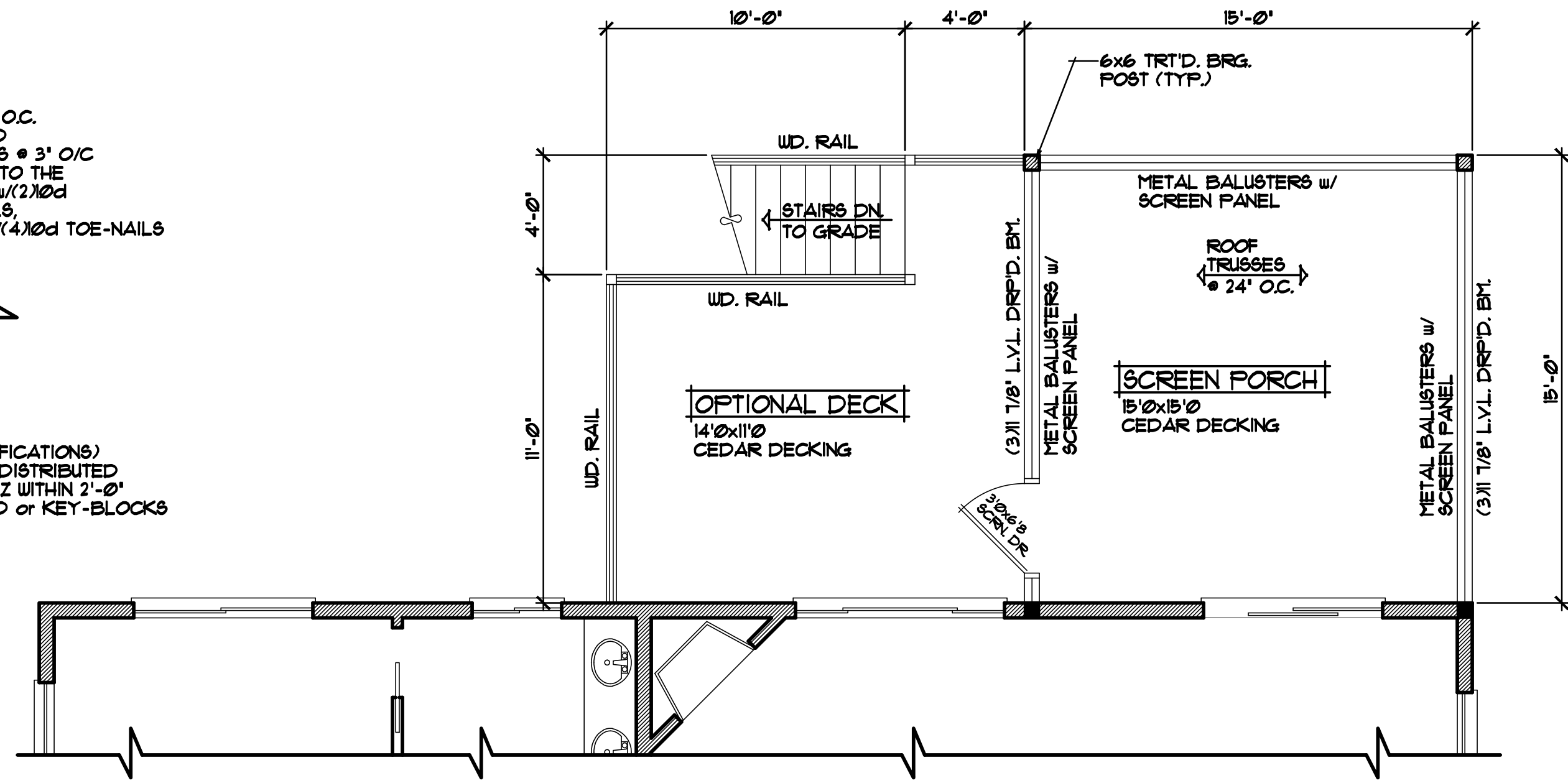
OFFICE: 763.757.5997
FAX: 763.757.4383
ANOVER, MINNESOTA
WWW.CROIXDESIGN.COM



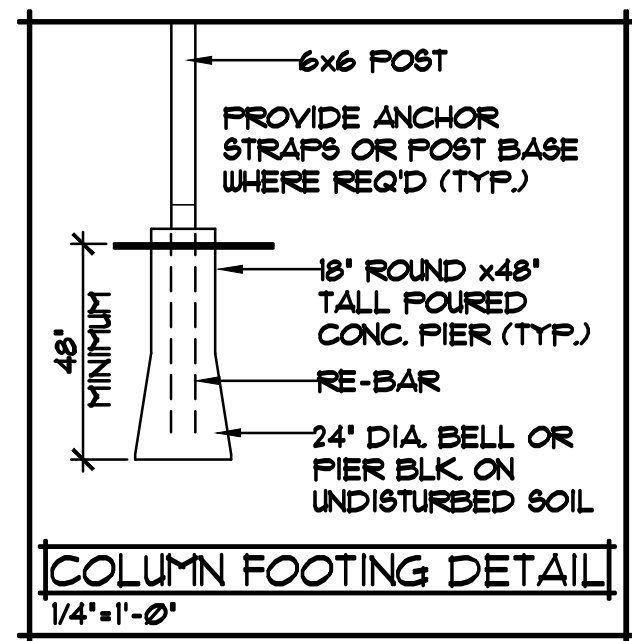
BUILT BY:
ELEVATE BUILDERS, LLC



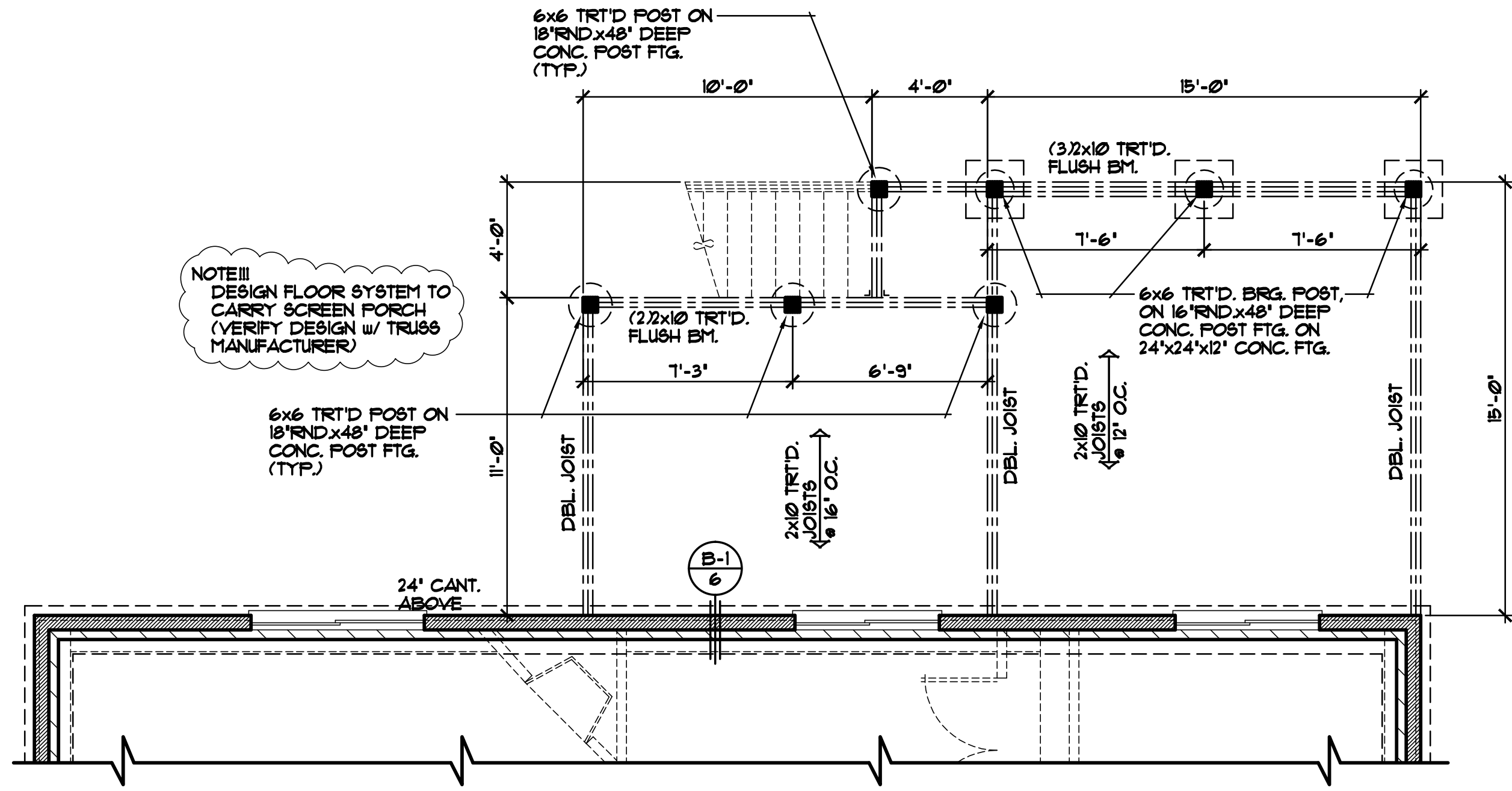
DECK LEDGER DETAIL 1/4"=1'-0"



SCREEN PORCH PLAN 1/4"=1'-0"



NOTE III DESIGN FLOOR SYSTEM TO CARRY SCREEN PORCH (VERIFY DESIGN w/ TRUSS MANUFACTURER)



SCREEN PORCH FOUNDATION & FRAMING PLAN 1/4"=1'-0"

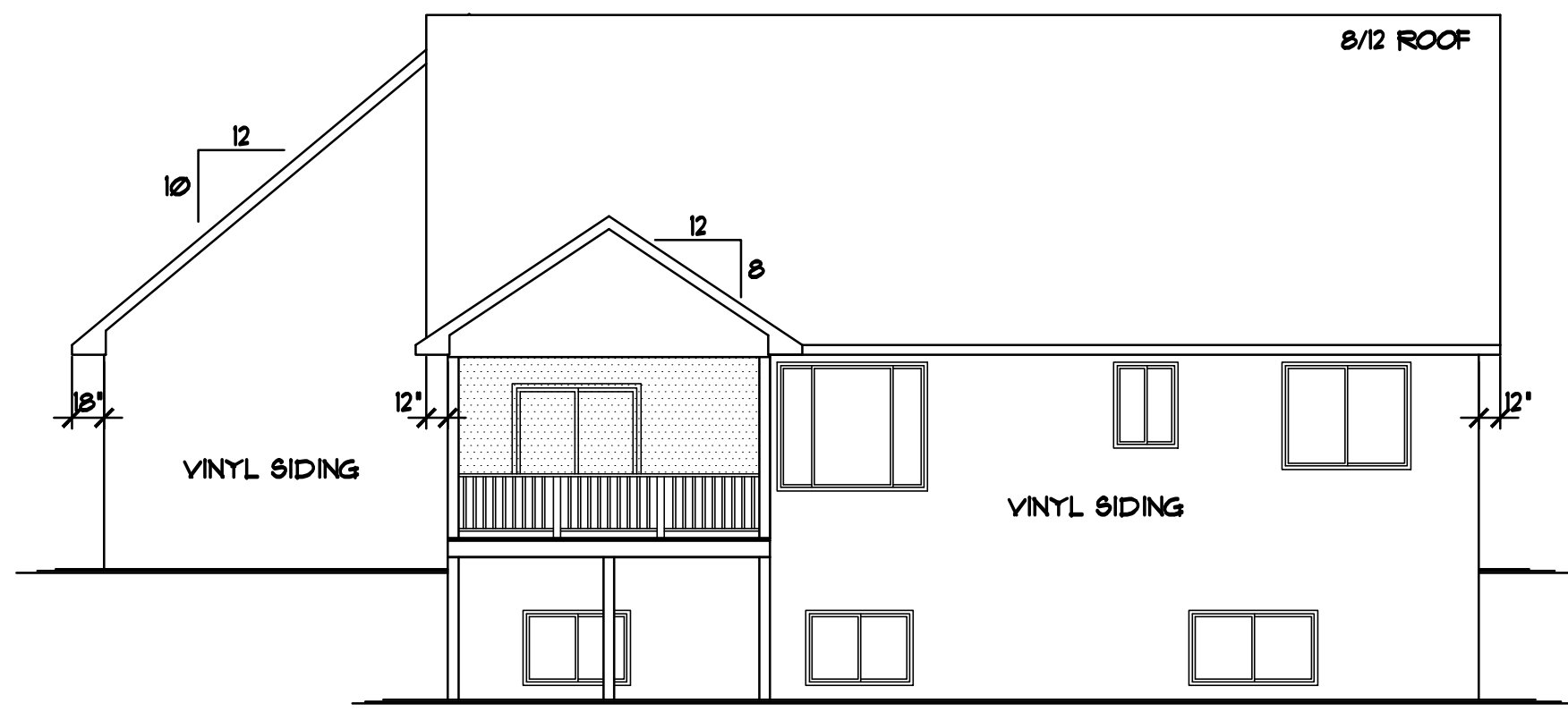
SPECIAL NOTICE: CROIX DESIGN AND DRAFTING, INC. ACCEPTS NO RESPONSIBILITY FOR ERRORS AND/OR OMISSIONS. THESE DRAWINGS ARE DESIGN CONCEPT ONLY. EVERY EFFORT HAS BEEN MADE TO PREVENT ERRORS AND OMISSIONS. THE USER OF THESE DRAWINGS SHALL BE RESPONSIBLE FOR VERIFYING ALL DIMENSIONS AND CONDITIONS BEFORE CONSTRUCTION. NO REPRESENTATION IS MADE OR IMPLIED FOR ACCURACY.

OFFICE: 763.757.5997
 FAX: 763.757.4383
 ANDOVER, MINNESOTA
 WWW.CROIXDESIGN.COM



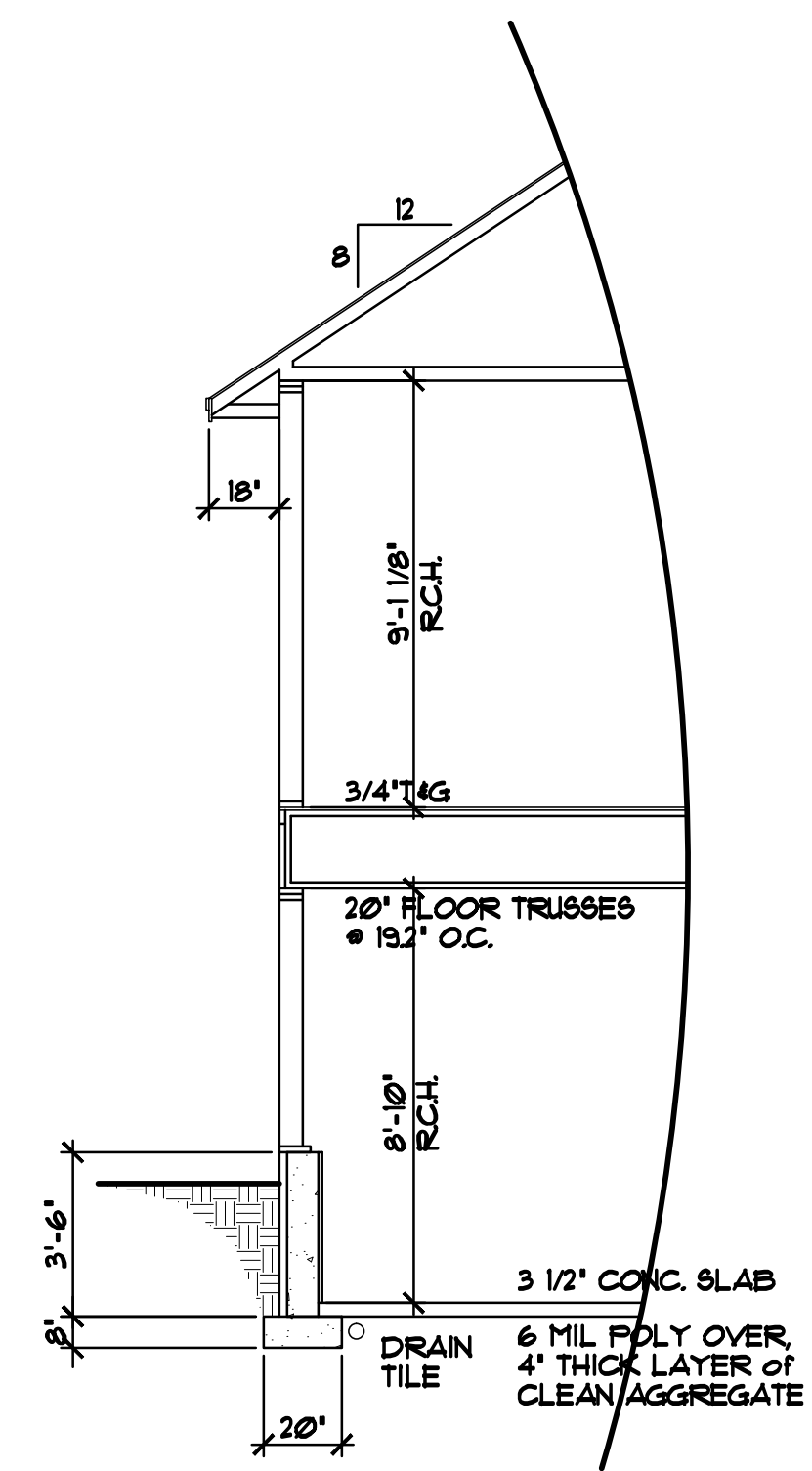
BUILT BY:
 ELEVATE BUILDERS, LLC

SHEET
 5
 of 9
 CADD FILE #
 11023

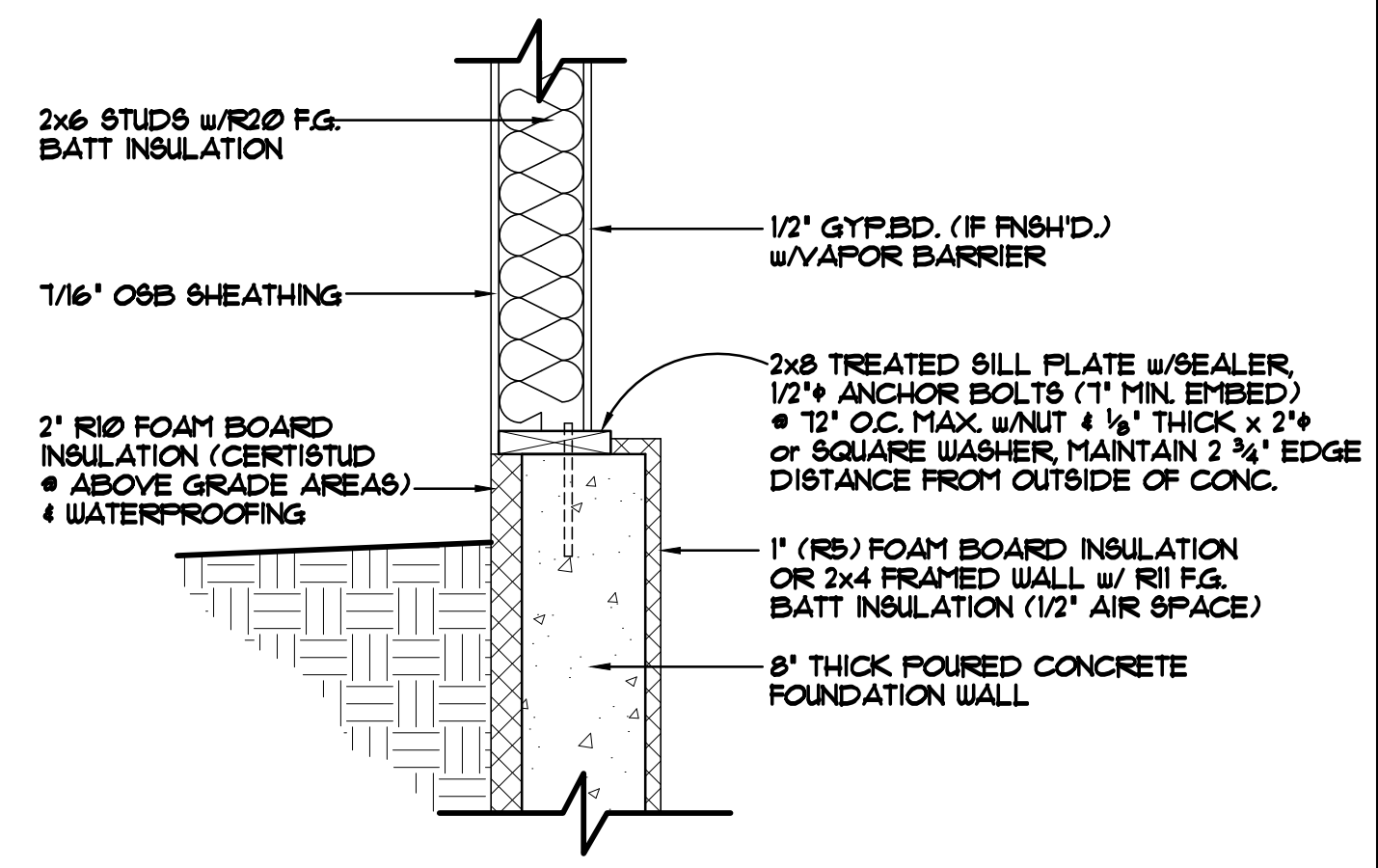


REAR ELEVATION 1/8"=1'-0"
DAYLIGHT OPTION

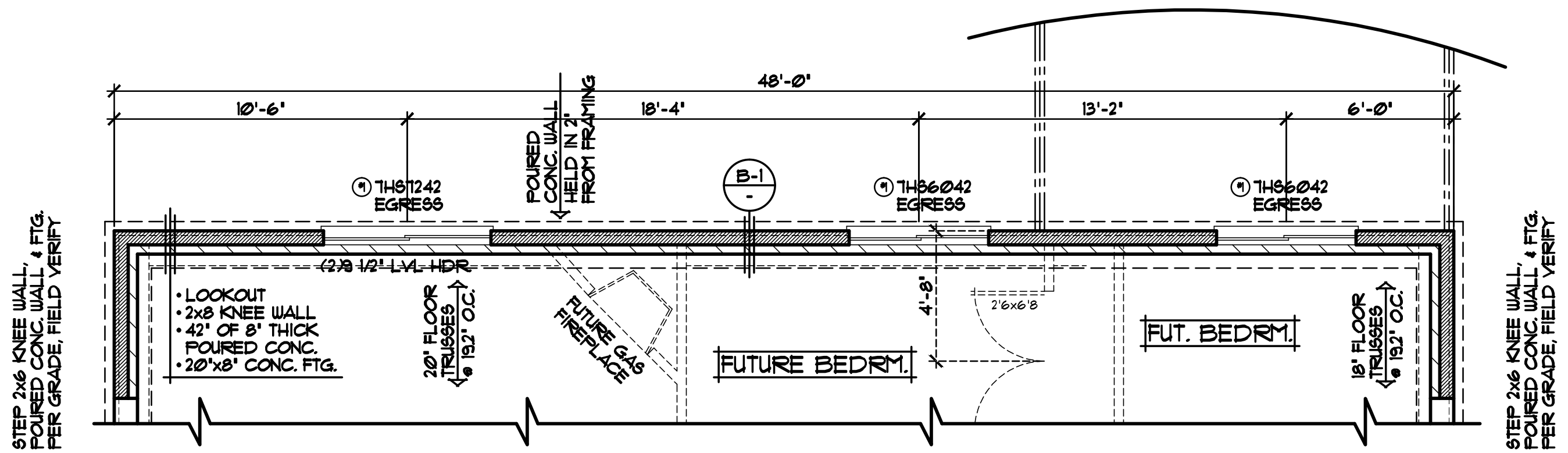
NOTE!!!
ADJUST HEEL HEIGHT @
MAIN LEVEL 10/12 TRUSSES
w/ 18' OVERHANG TO MATCH
8/12 TRUSSES w/18' OVERHANG
(TYP.)



OPTIONAL DAYLIGHT SECTION 1/4"=1'-0"



FOUNDATION/RIM AREA DETAIL "B-1" 1"=1'-0"
STANDARD DAYLIGHT SILL/FOUNDATION AREA
FOUNDATION HELD IN 2"



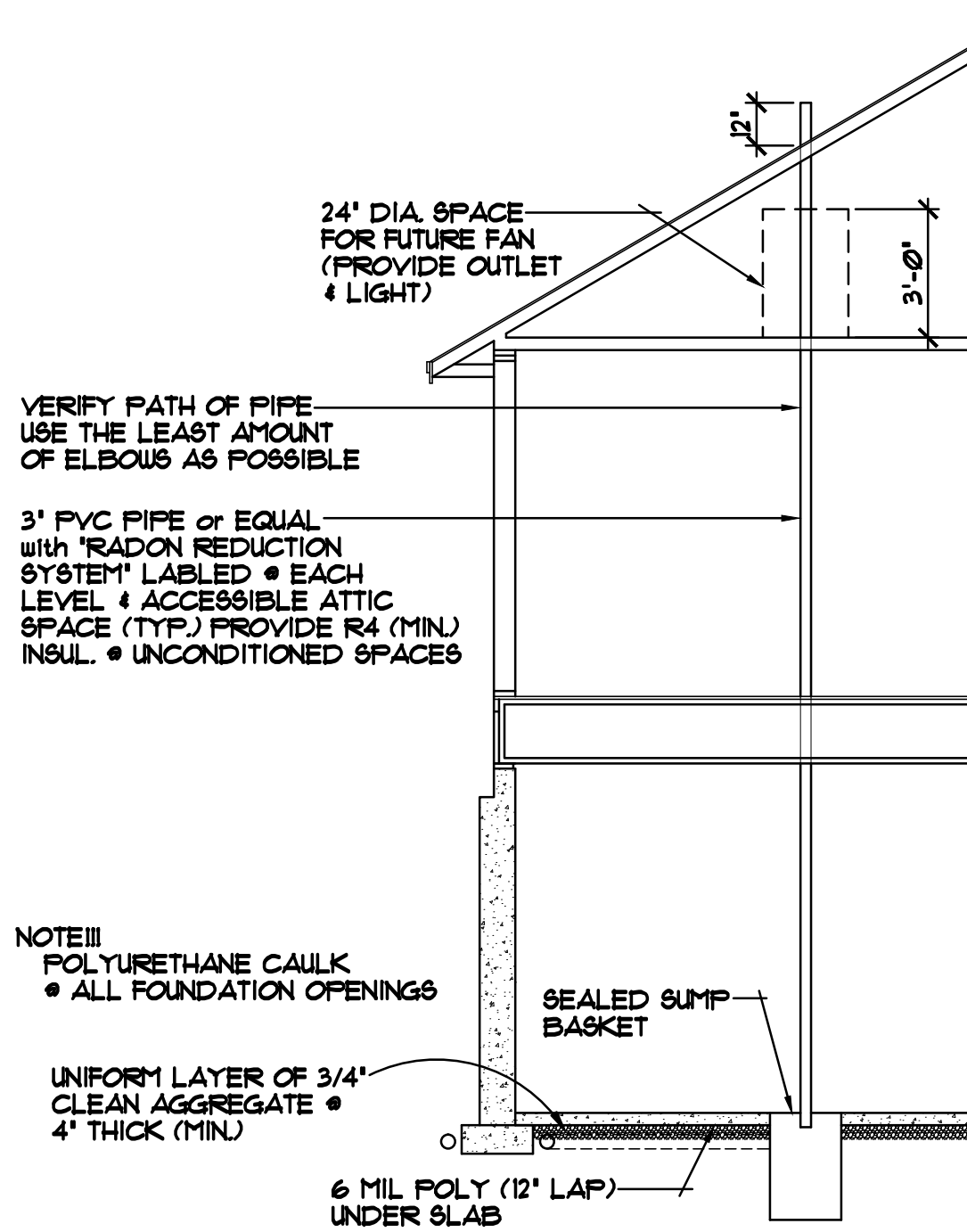
OPTIONAL DAYLIGHT FOUNDATION PLAN 1/4"=1'-0"

SPECIAL NOTICE:
CROIX DESIGN AND DRAFTING, INC. ACCEPTS NO RESPONSIBILITY FOR ERRORS AND/OR OMISSIONS. THESE DRAWINGS ARE DESIGN CONCEPT ONLY. EVERY EFFORT HAS BEEN MADE TO PREVENT ERRORS AND OMISSIONS. THE USER SHALL BE RESPONSIBLE FOR VERIFYING ALL DIMENSIONS AND CONDITIONS BEFORE CONSTRUCTION. NO REPRESENTATION IS MADE OR IMPLIED FOR ACCURACY.

OFFICE: 763.757.5997
FAX: 763.757.4383
ANDOVER, MINNESOTA
WWW.CROIXDESIGN.COM



BUILT BY:
ELEVATE BUILDERS, LLC



24" DIA. SPACE FOR FUTURE FAN (PROVIDE OUTLET & LIGHT)

VERIFY PATH OF PIPE USE THE LEAST AMOUNT OF ELBOWS AS POSSIBLE

3" PVC PIPE or EQUAL with "RADON REDUCTION SYSTEM" LABELED • EACH LEVEL & ACCESSIBLE ATTIC SPACE (TYP.) PROVIDE R4 (MIN.) INSUL. • UNCONDITIONED SPACES

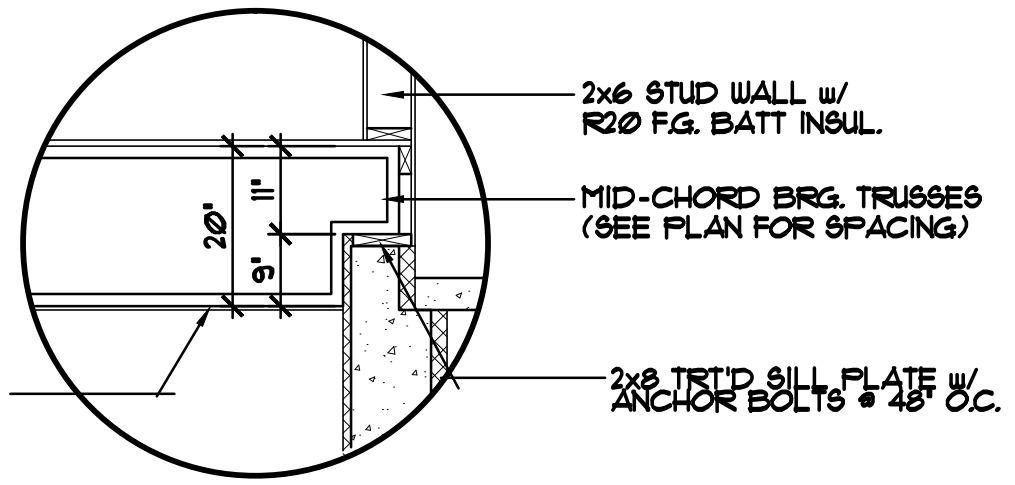
NOTE!!! POLYURETHANE CAULK • ALL FOUNDATION OPENINGS

UNIFORM LAYER OF 3/4" CLEAN AGGREGATE • 4" THICK (MIN.)

6 MIL POLY (12" LAP) UNDER SLAB

SEALED SUMP BASKET

ALTERNATE METHOD FOR PASSIVE RADON MITIGATION SYSTEM

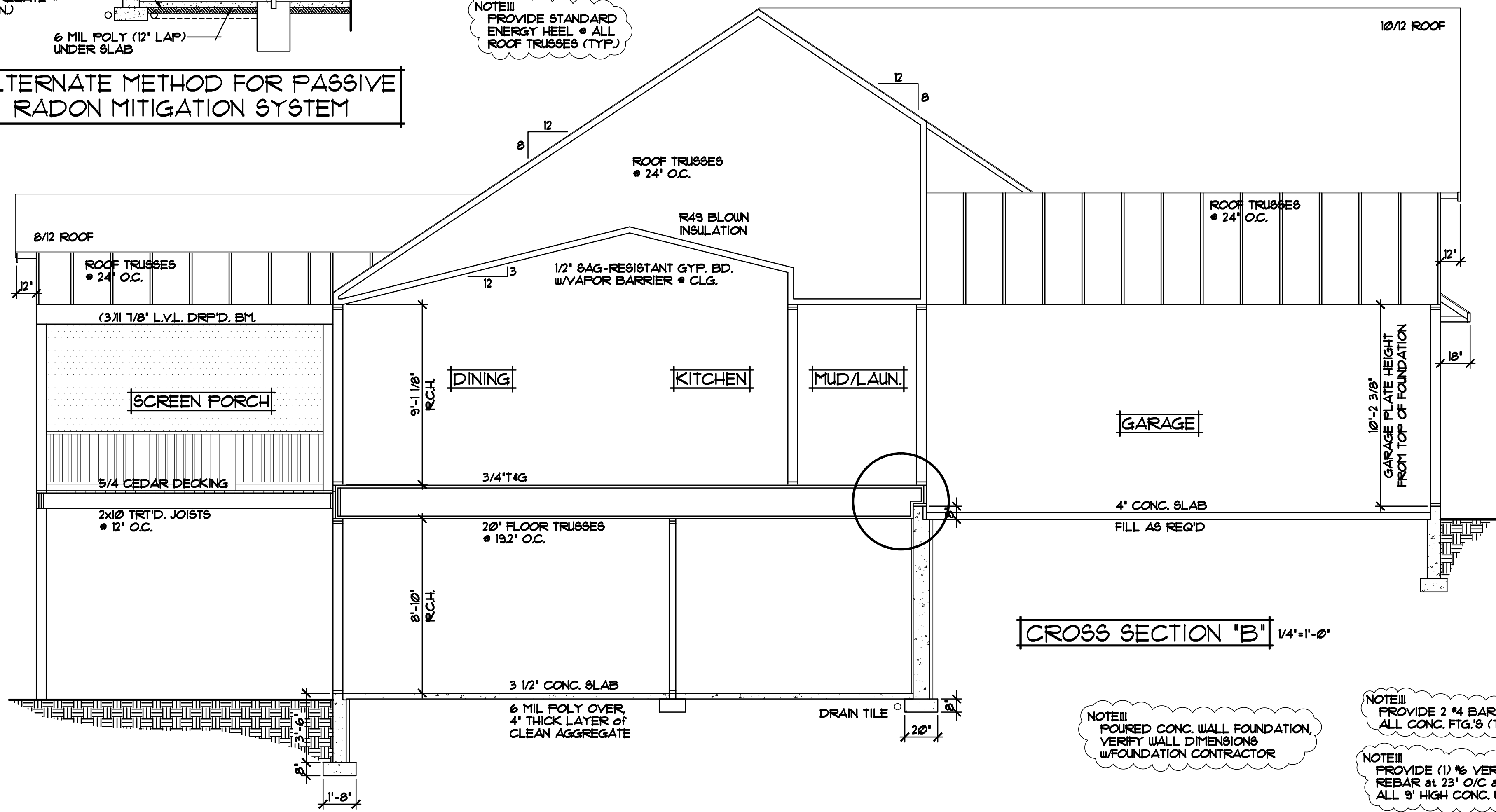


PROVIDE 1/2" GYP. BD. • BASEMENT CEILING (TYP.)

① MID-CHORD TRUSS DETAIL 1/2"=1'-0"

NOTE!!! ADJUST HEEL HEIGHT • MAIN LEVEL 10/12 TRUSSES w/ 18" OVERHANG TO MATCH 8/12 TRUSSES w/18" OVERHANG (TYP.)

NOTE!!! PROVIDE STANDARD ENERGY HEEL • ALL ROOF TRUSSES (TYP.)



CROSS SECTION "B" 1/4"=1'-0"

NOTE!!! POURED CONC. WALL FOUNDATION, VERIFY WALL DIMENSIONS w/FOUNDATION CONTRACTOR

NOTE!!! PROVIDE 2 #4 BAR AT ALL CONC. FTG.'S (TYP.)

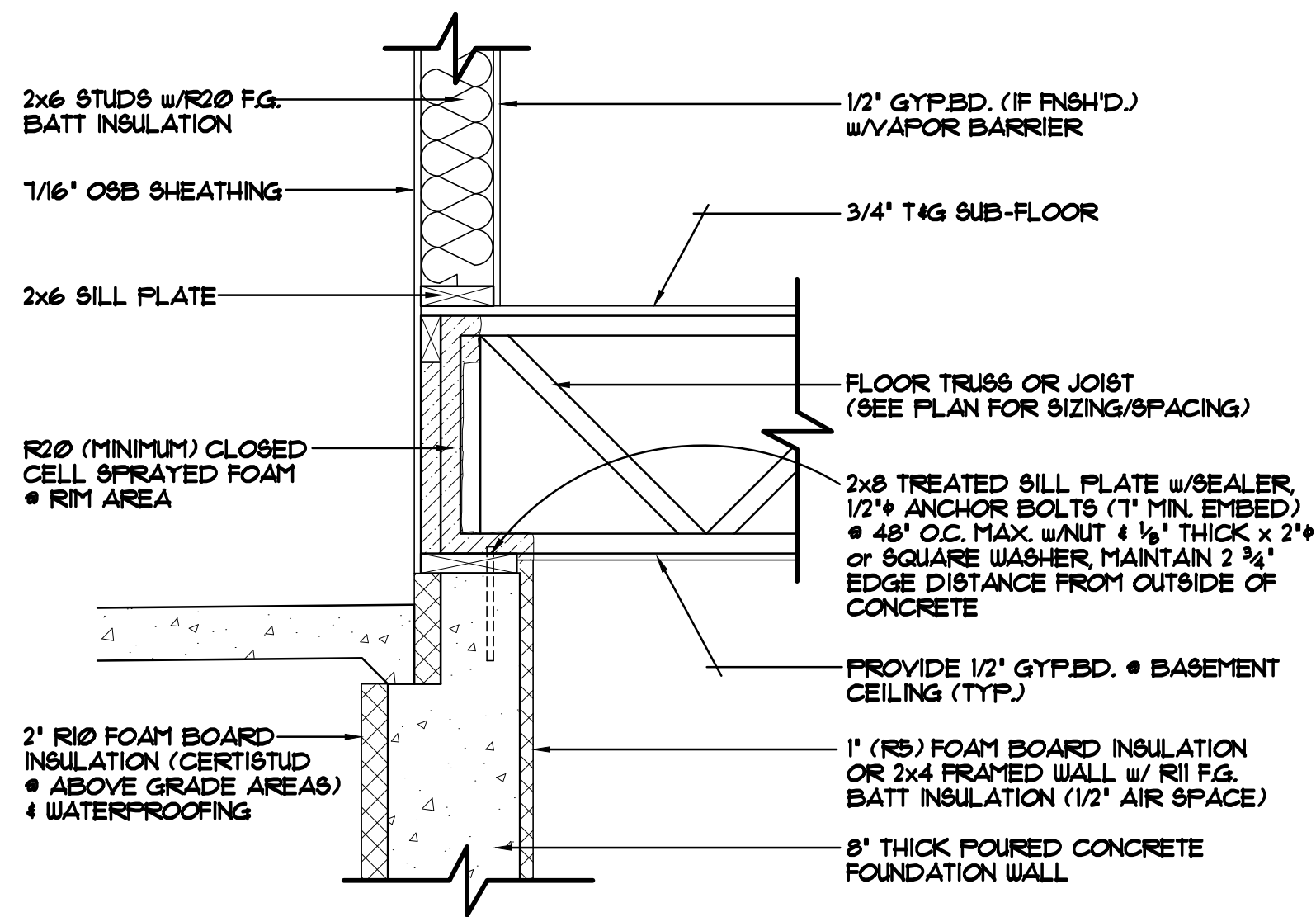
NOTE!!! PROVIDE (1) #6 VERTICAL REBAR at 23" O/C at ALL 9' HIGH CONC. WALLS

SPECIAL NOTICE:
CROIX DESIGN AND DRAFTING, INC. ACCEPTS NO RESPONSIBILITY FOR ERRORS AND/OR OMISSIONS. THESE DRAWINGS ARE DESIGN CONCEPT ONLY. EVERY EFFORT HAS BEEN MADE TO PREVENT AND CORRECT ERRORS AND OMISSIONS. THE USER OF THESE DRAWINGS SHALL BE RESPONSIBLE FOR VERIFYING ALL DIMENSIONS AND CONDITIONS BEFORE CONSTRUCTION. NO REPRESENTATION IS MADE OR IMPLIED FOR ACCURACY.

OFFICE: 763.757.5997
FAX: 763.757.4383
ANDOVER, MINNESOTA
WWW.CROIXDESIGN.COM

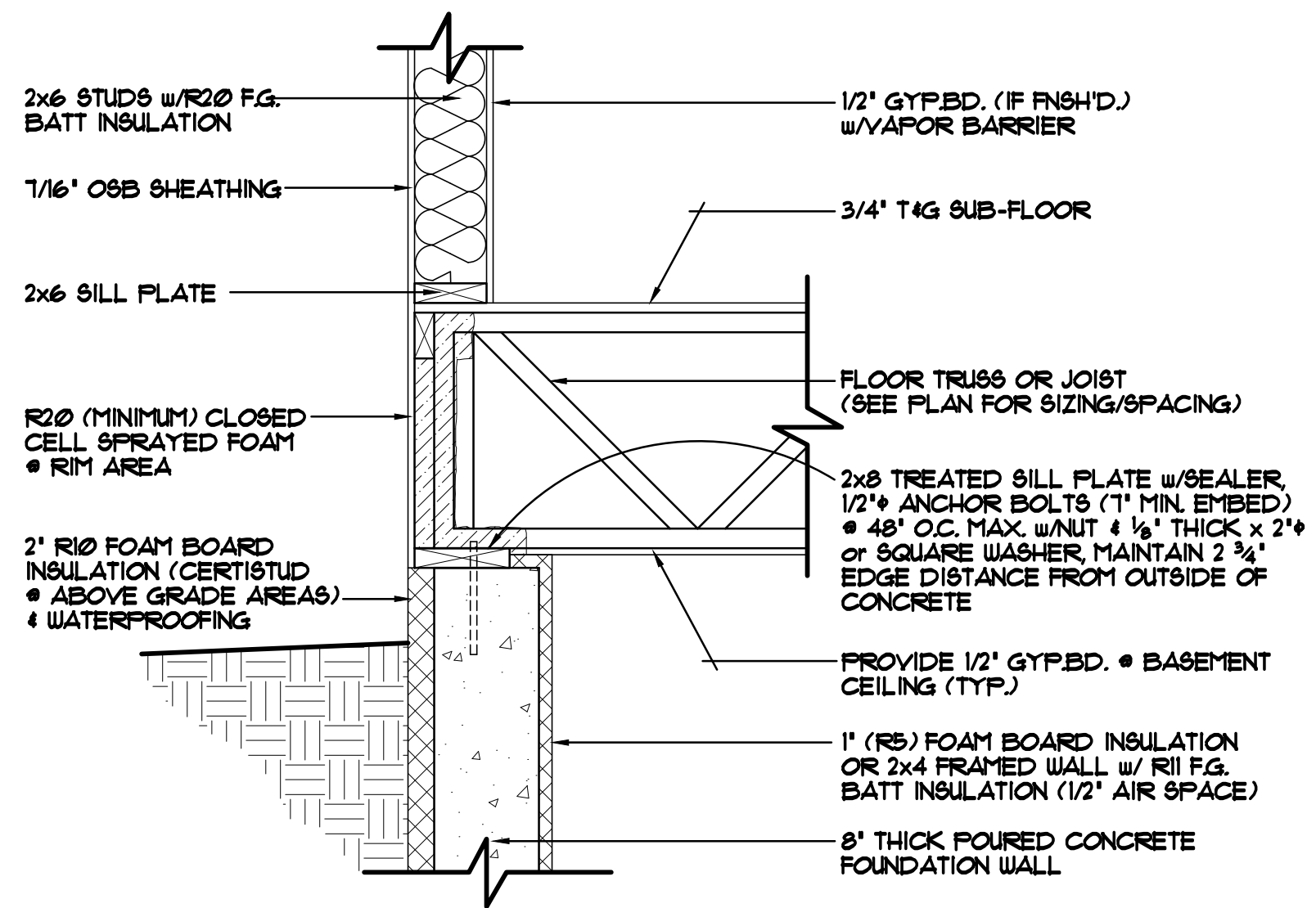


BUILT BY:
ELEVATE BUILDERS, LLC



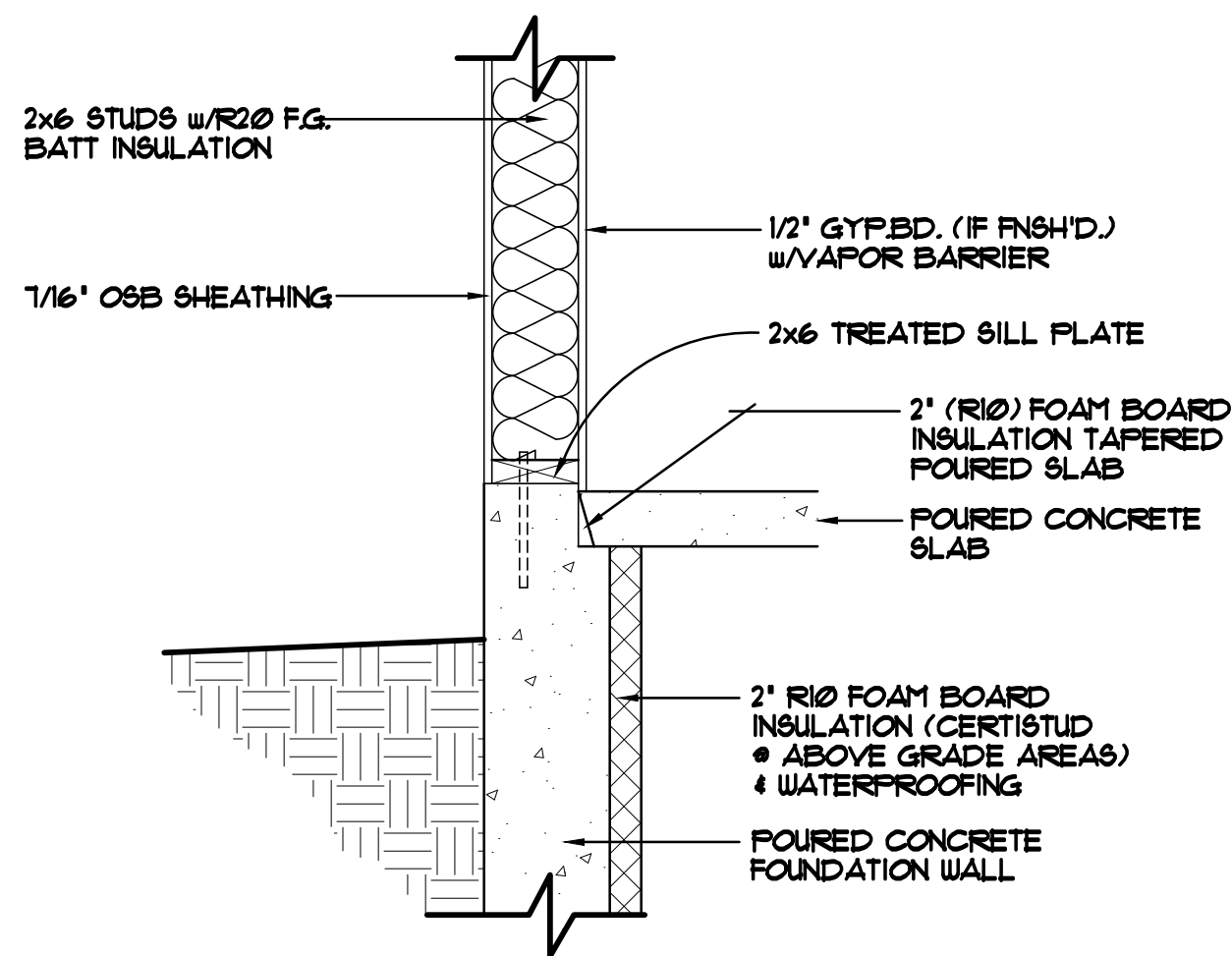
FOUNDATION/RIM AREA DETAIL "A-1" 1"=1'-0"

BRICK LEDGED RIM AREA, TRUSSES/JOISTS PERPENDICULAR TO FOUNDATION WALL
FOUNDATION HELD IN 2'



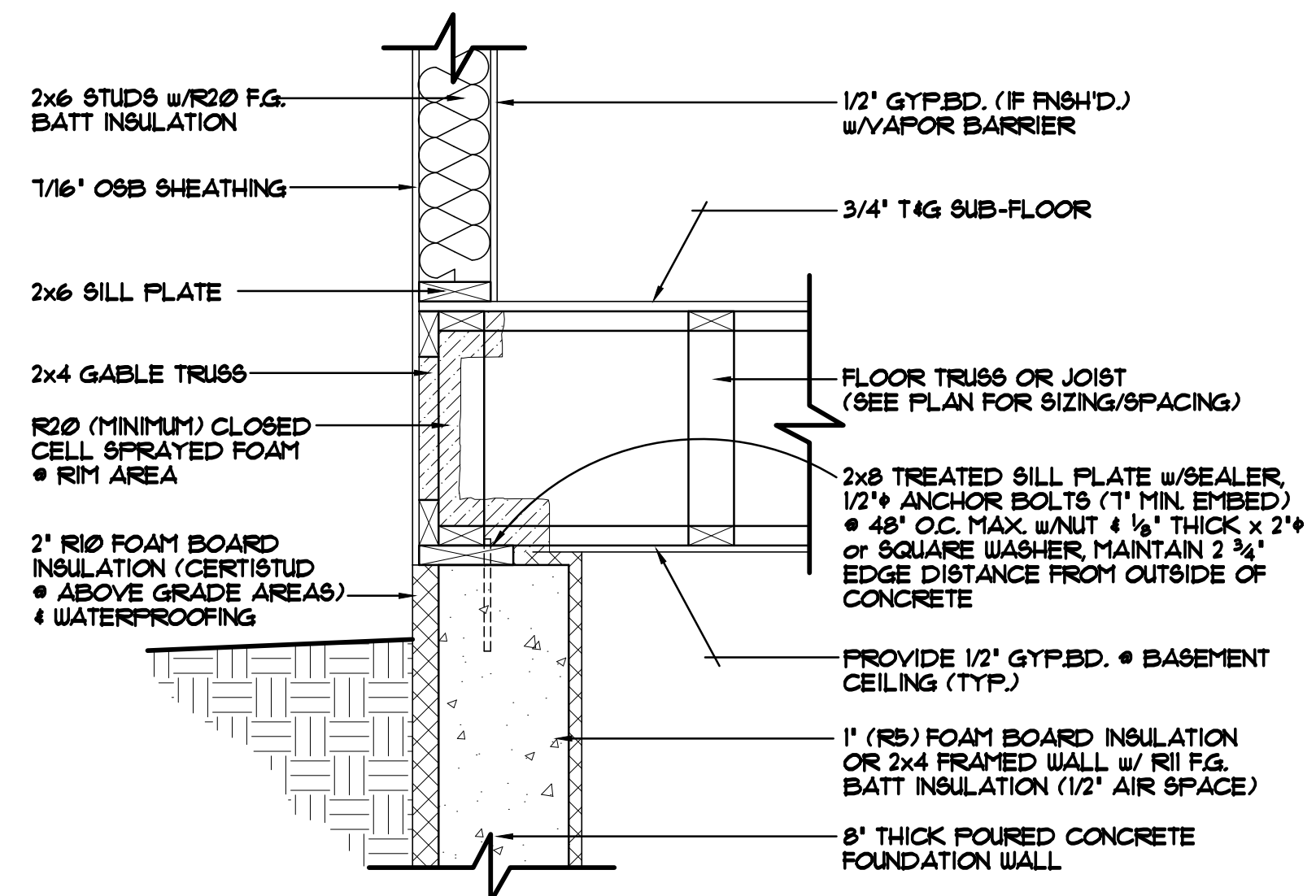
FOUNDATION/RIM AREA DETAIL "A-2" 1"=1'-0"

STANDARD RIM AREA, TRUSSES/JOISTS PERPENDICULAR TO FOUNDATION WALL
FOUNDATION HELD IN 2'



FOUNDATION/RIM AREA DETAIL "A-3" 1"=1'-0"

STANDARD WALKOUT SILL/FOUNDATION AREA
FOUNDATION NOT HELD IN



FOUNDATION/RIM AREA DETAIL "A-4" 1"=1'-0"

STANDARD RIM AREA, TRUSSES/JOISTS PARALLEL TO FOUNDATION WALL
FOUNDATION HELD IN 2'

SPECIAL NOTICE:

CROIX DESIGN AND DRAFTING, INC. ACCEPTS NO RESPONSIBILITY FOR ERRORS AND/OR OMISSIONS. THESE DRAWINGS ARE DESIGN CONCEPT ONLY. EVERY EFFORT HAS BEEN MADE TO PREVENT ERRORS AND OMISSIONS. THE USER SHALL BE RESPONSIBLE FOR VERIFYING ALL DIMENSIONS AND BEING RESPONSIBLE FOR ANY CHANGES OR ADJUSTMENTS REQUIRED DURING ACTUAL CONSTRUCTION. NO REPRESENTATION IS MADE OR IMPLIED FOR ACCURACY.

OFFICE: 763.757.5997
FAX: 763.757.4383
ANDOVER, MINNESOTA
WWW.CROIXDESIGN.COM



BUILT BY:
ELEVATE BUILDERS, LLC