

WINDOW and DOOR PERFORMANCE DATA
U-VALUE / SHGC / STC

- SINGLE HUNG UNIT
U-VALUE = 0.29
SHGC = 0.30
STC = 30
- SLIDER UNIT
U-VALUE = 0.29
SHGC = 0.30
STC = 30
- FIXED UNIT
U-VALUE = 0.21
SHGC = 0.31
STC = 21
- CASEMENT UNIT
U-VALUE = 0.21
SHGC = 0.24
STC = 28
- AWNING UNIT
U-VALUE = 0.21
SHGC = 0.24
STC = 28
- SLIDING PATIO DOOR
U-VALUE = 0.29
SHGC = 0.30
STC = 21

HOUSE INTERIOR VOLUME CALCULATION

3418 CUBIC FEET (MAIN LEVEL VOLUME)
660 CUBIC FEET (BONUS ROOM TRUSS VOLUME)
12348 CUBIC FEET (MAIN LEVEL VOLUME)
1910 CUBIC FEET (FLOOR TRUSS SPACE VOLUME)
1210 CUBIC FEET (BASEMENT VOLUME)
29606 CUBIC FEET (TOTAL INTERIOR VOLUME)

LEVEL HEIGHT INFORMATION TABLE		
LEVEL	R.C.H.	TOP OF WINDOW RO.
BASEMENT	9'-1 1/8"	7'-10 1/2"
MAIN LEVEL	8'-1 1/8"	6'-10 1/2"

- SILVERLINE WINDOWS SPEC'D.
- WINDOWS w/PRAIRIE GRIDS WHERE SHOWN
- LP CORNER TRIM
- VINYL SHAKE SIDING WHERE SHOWN
- VINYL SIDING WHERE SHOWN
- ALUMINUM SOFFITS & FASCIA
- STONE VENEER WHERE SHOWN
- ARCHITECTURAL SHINGLES

REVISIONS	BY
06311	J.M.
07001	J.M.
14162	J.C.
14169	J.C.
16041	R.B.

SPECIAL NOTICE:
CROIX DESIGN AND DRAFTING, INC. ACCEPTS NO RESPONSIBILITY FOR ERRORS AND/OR OMISSIONS. THESE DRAWINGS ARE DESIGN CONCEPT ONLY. EVERY EFFORT HAS BEEN MADE TO DESIGN ACCURATELY. THE OWNER, GENERAL CONTRACTOR, SUB-CONTRACTORS, AND SUPPLIERS MUST CHECK ALL DETAILS AND DIMENSIONS AND BE RESPONSIBLE FOR ANY CHANGES OR ADJUSTMENTS REQUIRED DURING ACTUAL CONSTRUCTION. NO REPRESENTATION IS MADE OR IMPLIED FOR ACCURACY.

COPYRIGHT NOTICE, ALL RIGHTS RESERVED
THESE ARCHITECTURAL PLANS AND ALL RELATED WORKS ARE PROTECTED BY UNITED STATES COPYRIGHT LAWS, AND THAT NOT BE REPRODUCED OR TRANSMITTED IN ANY FORM OR BY ANY MEANS, WITH OR WITHOUT THE EXPRESS WRITTEN PERMISSION OF CROIX DESIGN AND DRAFTING, INC. CROIX DESIGN AND DRAFTING, INC.

DESIGN and DRAFTING BY:

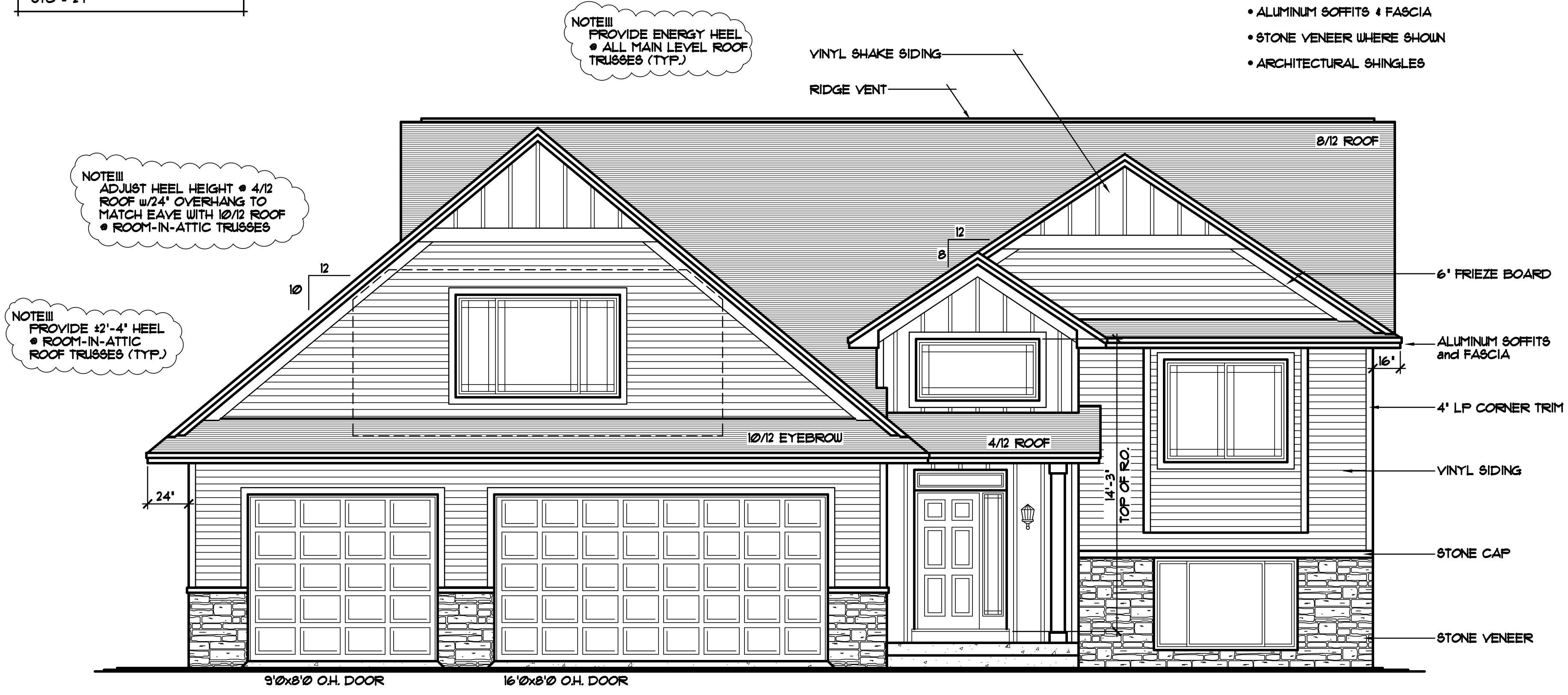
CROIX
DESIGN & DRAFTING, INC.

• ARCHITECTURAL DESIGN and DRAFTING SERVICE •
• HOME PLAN SERVICE • CUSTOM HOMES • REMODELING •
• PHONE: 763.757.5997 • ANDOVER, MINNESOTA •
• WWW.CROIXDESIGN.COM •

BUILT BY:

ELEVATE BUILDERS, LLC
P.O. BOX 114
FOREST LAKE, MN 55025

DRAWN	R.B.
CHECKED	XX
DATE	04/01/2019
SCALE	AS NOTED
CADD FILE	19069
SHEET	1 of 7

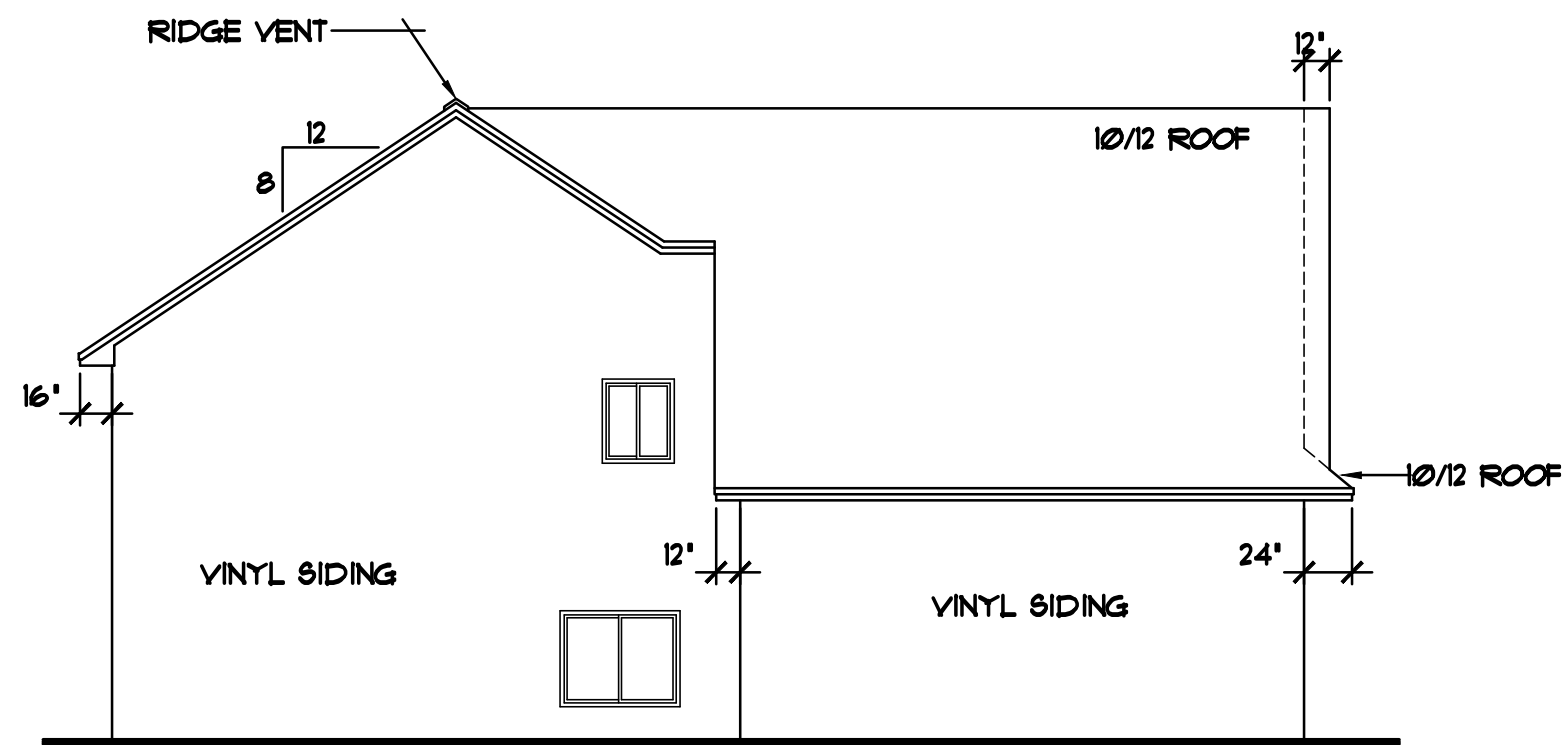


FRONT ELEVATION 1/4"=1'-0"

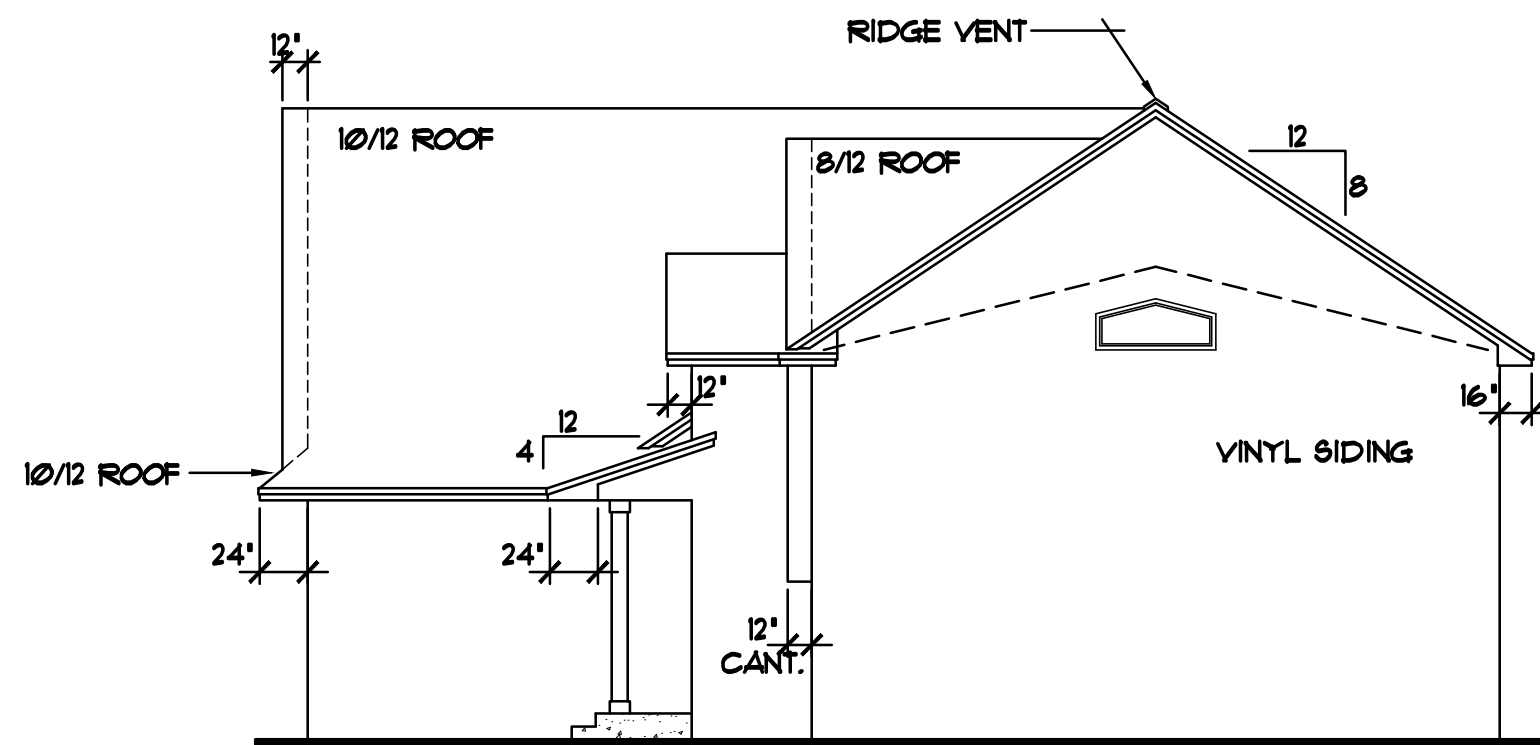
1344 SQ. FT. MAIN LEVELS
466 SQ. FT. BONUS ROOM MASTER SUITE
1810 SQ. FT. ABOVE GRADE

THE:
WILDRIDGE SALES CENTER
NORTH BRANCH, MN

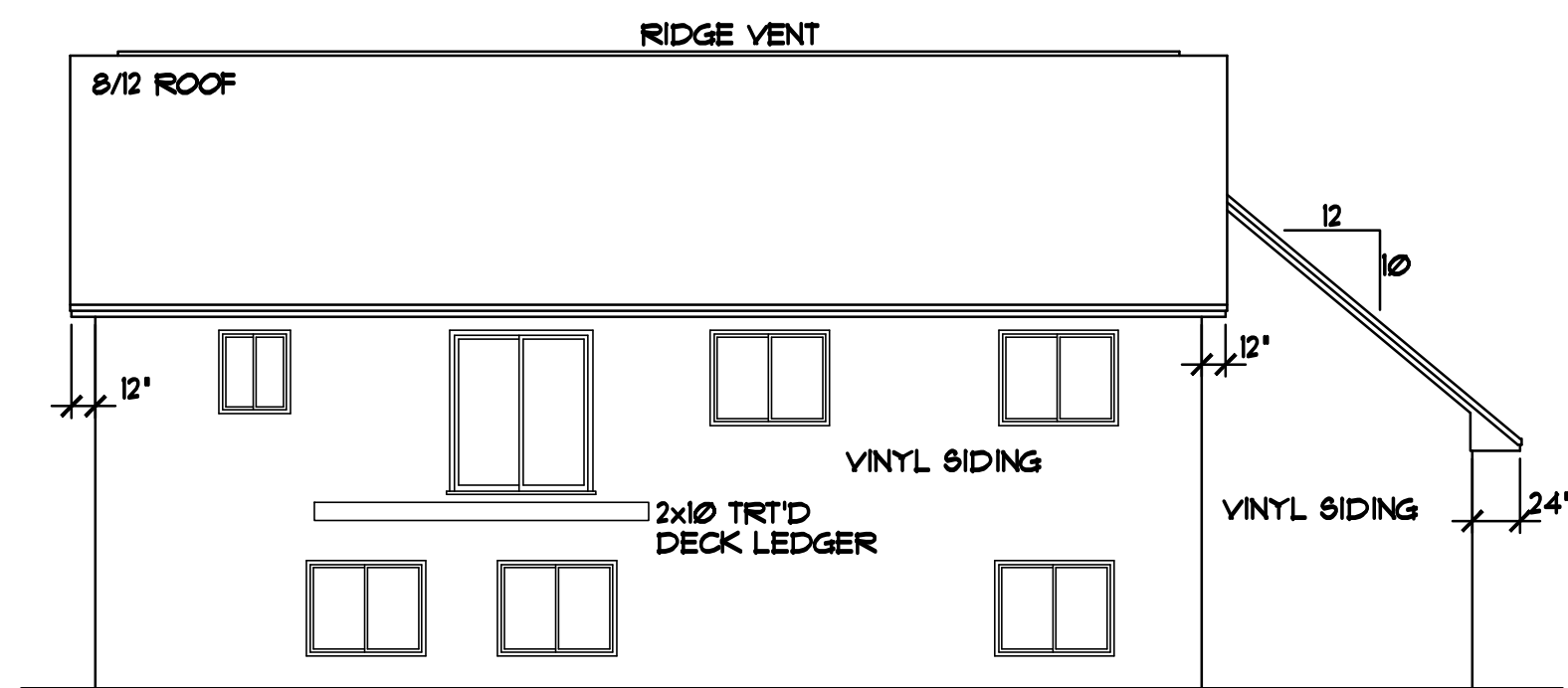
© COPYRIGHT 2006-2019 NOTICE, ALL RIGHTS RESERVED
CROIX DESIGN and DRAFTING, INC.



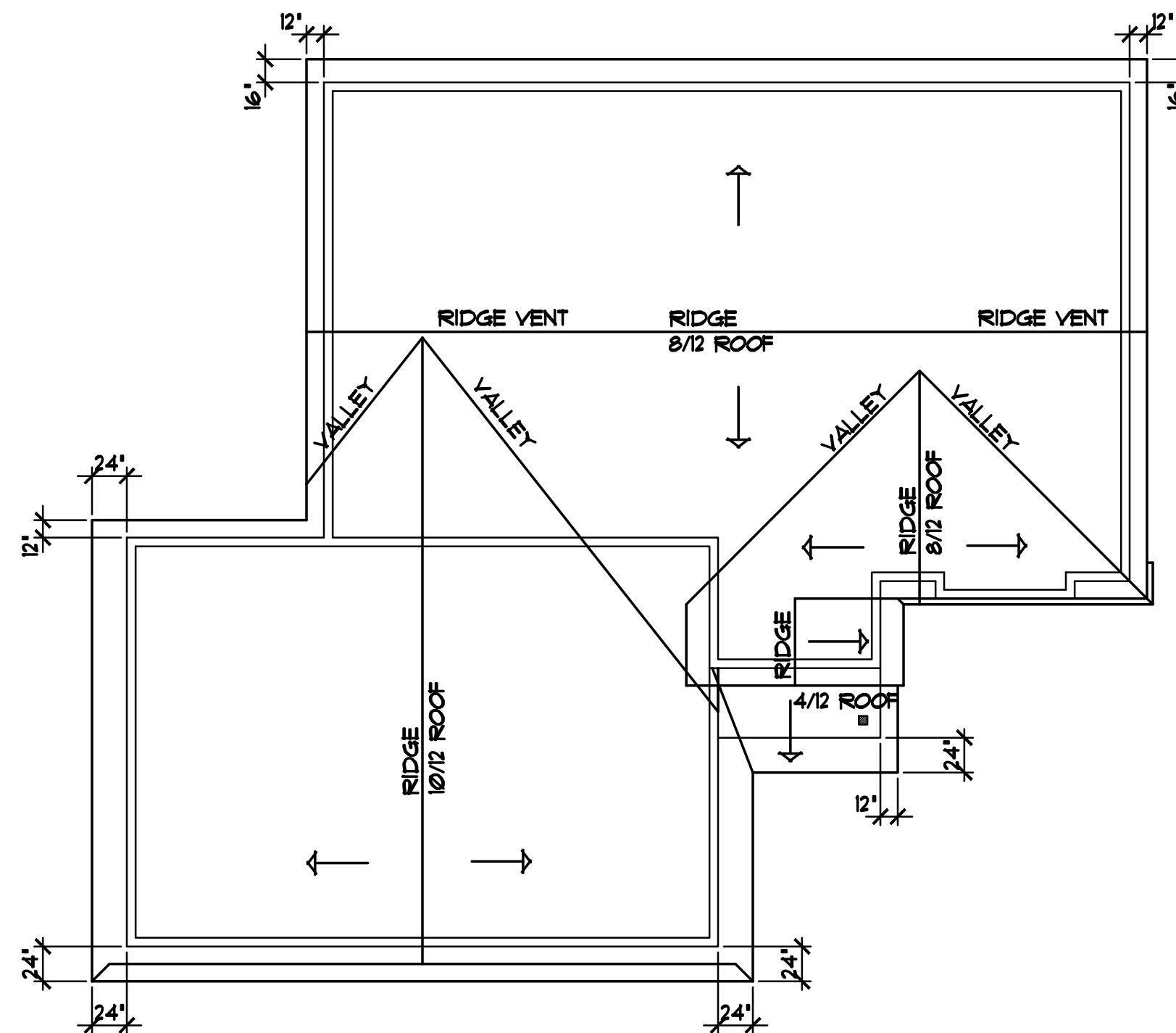
LEFT ELEVATION 1/8"=1'-0"



RIGHT ELEVATION 1/8"=1'-0"



REAR ELEVATION 1/8"=1'-0"

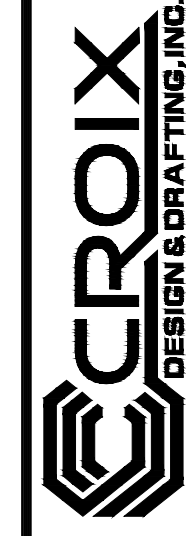


BIRD'S EYE ROOF PLAN 1/8"=1'-0"
8/12 ROOF w/16' AND 12' OVERHANGS

REVISIONS
XXXXXX 0000 BY:XX
XXXXXX 0000 BY:XX

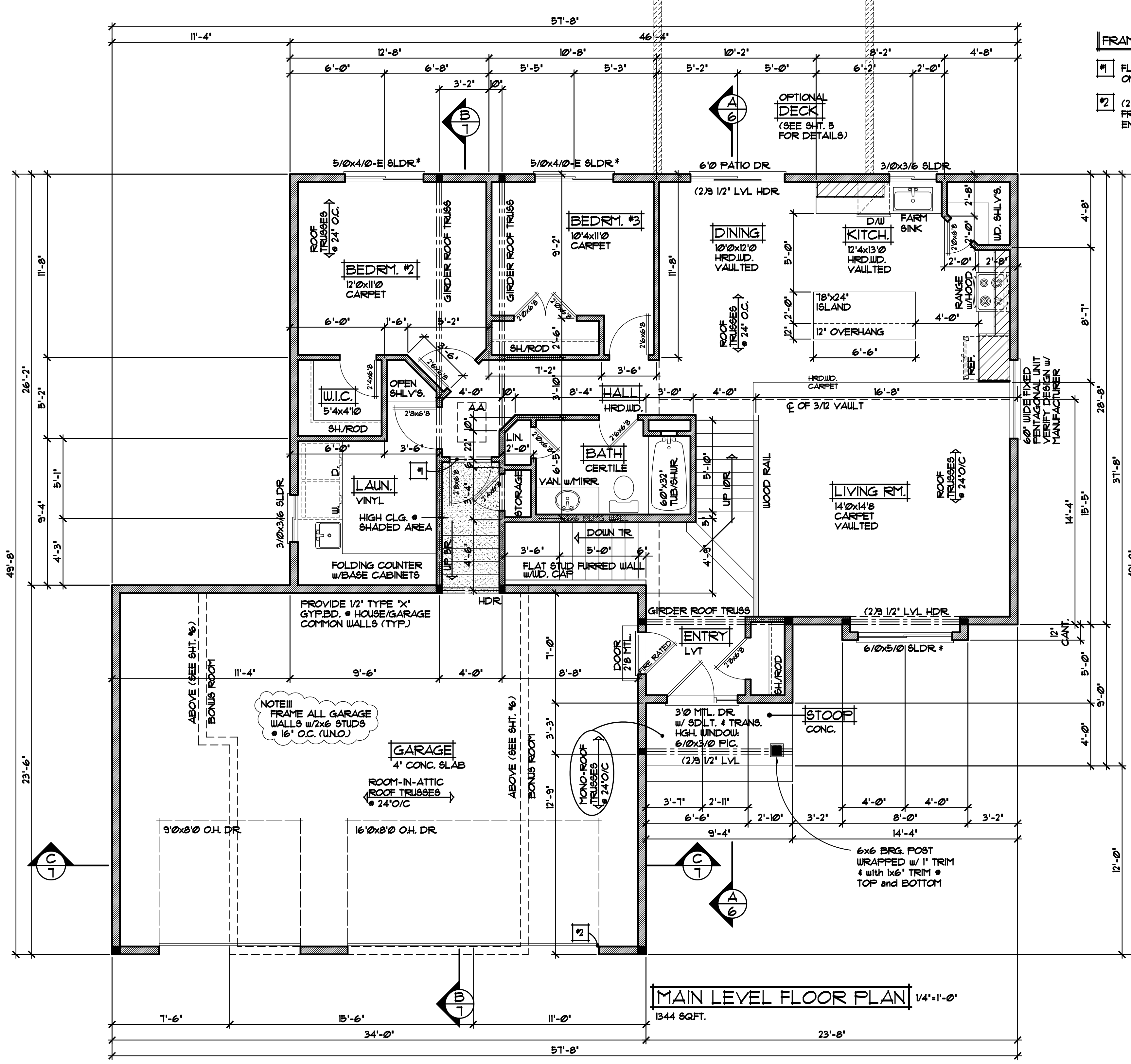
SPECIAL NOTICE:
CROIX DESIGN AND DRAFTING, INC. ACCEPTS NO RESPONSIBILITY FOR ERRORS AND/OR OMISSIONS. THESE DRAWINGS ARE DESIGN CONCEPT ONLY. EVERY EFFORT HAS BEEN MADE TO PREPARE THESE DRAWINGS ACCURATELY. HOWEVER, THE USER SHALL BE RESPONSIBLE FOR VERIFYING ALL DIMENSIONS AND CONDITIONS BEFORE CONSTRUCTION. THE USER SHALL BE RESPONSIBLE FOR ANY CHANGES OR ADJUSTMENTS REQUIRED DURING CONSTRUCTION. NO REPRESENTATION IS MADE OR IMPLIED FOR ACCURACY.

OFFICE: 763.757.5987
FAX: 763.757.4383
ANDOVER, MINNESOTA
WWW.CROIXDESIGN.COM



BUILT BY:
ELEVATE BUILDERS, LLC

SHEET
2
OF 7
CADD FILE #
19069



FRAMING NOTES III

- #1 FLUSH HEADER TO HANG ON GIRDER ROOF TRUSSES (TYP.)
- #2 (2) 1 7/8" LVL HDR CONT. FROM CORNER TO CORNER ENTIRE FRONT OF GARAGE

NOTE III
VERIFY SIZES AND DIMENSIONS OF KITCHEN WINDOW, CABINETS, and ISLAND WITH CABINET DRAWINGS (TYP.)

NOTE III
PROVIDE ENERGY HEEL @ ALL ROOF TRUSSES (TYP.)

NOTE III
PROVIDE 42'-4" HEEL @ ROOM-IN-ATTIC ROOF TRUSSES (TYP.)

FRAMING NOTES

- 8'-1 1/8" PLATE HEIGHT @ ENTIRE MAIN LEVEL (UNLESS NOTED OTHERWISE)
- FRAME ALL GARAGE STUDS w/ 2x6 STUDS @ 16" O.C. (TYP.)

DOOR & WINDOW NOTES

- SILVERLINE WINDOWS SPECIFIED, VERIFY ROUGH OPENING SIZES FOR DOORS & WINDOWS w/ MANUFACTURER
- WINDOWS with '*' REQUIRE A SASH STOPPER (TYP.)
- ALL WINDOW & DOOR OPENINGS TO HAVE (2) 2x10 #2 GRADE HEADER or BETTER (UNLESS NOTED OTHERWISE)
- TOP OF RO. FOR ALL WINDOWS ON MAIN LEVEL TO BE 6'-10 1/2" FROM SUB-FLOOR (UNLESS NOTED OTHERWISE)

MAIN LEVEL FLOOR PLAN 1/4" = 1'-0"
1344 SQFT.

REVISIONS	
XXXXXX	BY:XX
0000	BY:XX
XXXXXX	BY:XX
0000	BY:XX

SPECIAL NOTICE:
CROIX DESIGN AND DRAFTING, INC. ACCEPTS NO RESPONSIBILITY FOR ERRORS AND/OR OMISSIONS. THESE DRAWINGS ARE DESIGN CONCEPT ONLY. EVERY EFFORT HAS BEEN MADE TO PREVENT ERRORS, BUT THE USER SHALL BE RESPONSIBLE FOR VERIFYING ALL DIMENSIONS AND CONDITIONS OF THE PROJECT. THE USER SHALL BE RESPONSIBLE FOR OBTAINING ALL NECESSARY PERMITS AND APPROVALS. THE USER SHALL BE RESPONSIBLE FOR ANY CHANGES OR ADJUSTMENTS REQUIRED DURING CONSTRUCTION. NO REPRESENTATION IS MADE OR IMPLIED FOR ACCURACY.

OFFICE: 763.757.5997
FAX: 763.757.4383
ANDOVER, MINNESOTA
WWW.CROIXDESIGN.COM



BUILT BY:
ELEVATE BUILDERS, LLC

REVISIONS
XXXXXX 0000 BY:XX
XXXXXX 0000 BY:XX

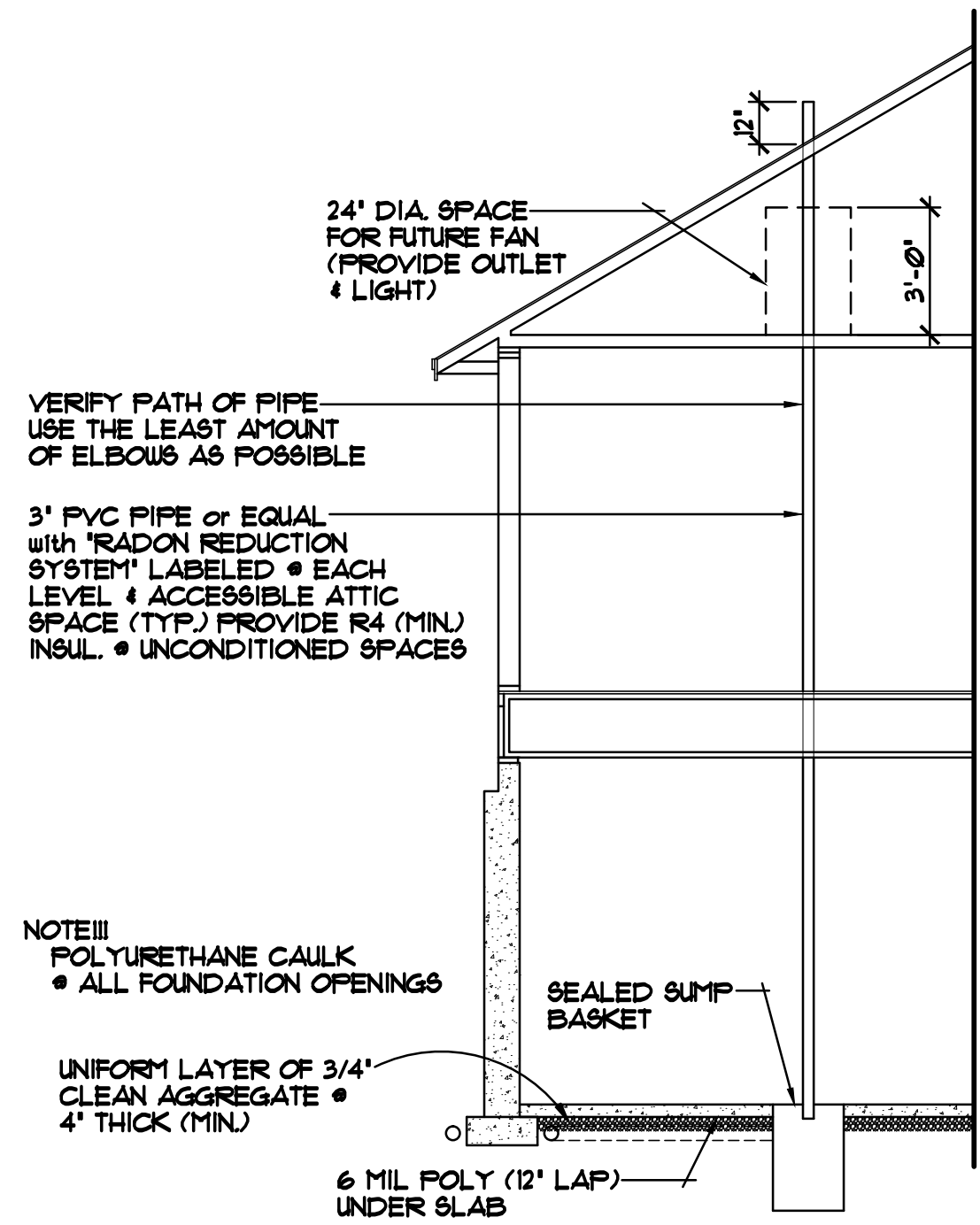
SPECIAL NOTICE:
CROIX DESIGN AND DRAFTING, INC. ACCEPTS NO RESPONSIBILITY FOR ERRORS AND/OR OMISSIONS. THESE DRAWINGS ARE DESIGN CONCEPT ONLY. EVERY EFFORT HAS BEEN MADE TO PREVENT ERRORS, BUT THE USER MUST VERIFY ALL DIMENSIONS AND CONDITIONS. THE USER SHALL BE RESPONSIBLE FOR ANY CHANGES OR ADJUSTMENTS REQUIRED DURING CONSTRUCTION. NO REPRESENTATION IS MADE OR IMPLIED FOR ACCURACY.

OFFICE: 763.757.5987
FAX: 763.757.4383
ANDOVER, MINNESOTA
WWW.CROIXDESIGN.COM



BUILT BY:
ELEVATE BUILDERS, LLC

SHEET
6
OF 7
CADD FILE #
19069



ALTERNATE METHOD FOR PASSIVE RADON MITIGATION SYSTEM

- ROOF CONSTRUCTION:**
- PREMANUFACTURED ROOF TRUSSES - ENGINEERED BY SUPPLIER
 - R49 BLOWN FIBERGLASS INSULATION
 - 1/16" ROOF VENT AT SOFFITS, 1/16" VENT AT RIDGE
 - AIR CHUTE AT EACH TRUSS SPACE
 - 1/16" OSB ROOF SHEATHING
 - 15# ROOFING FELT
 - ICE & WATER MEMBRANE APPLIED 24" PAST EXTERIOR WALL
 - 30 YEAR ARCHITECTURAL SHINGLES

- SOFFIT / FASCIA:**
- 2x6 SUB-FASCIA
 - MAINTENANCE FREE FASCIA COVER
 - MAINTENANCE FREE VENTED SOFFIT

- WALL CONSTRUCTION:**
- HOUSE WRAP
 - 1/16" OSB SHEATHING
 - 2x6 STUDS @ 16" O.C.
 - WINDOWS PER SPEC'S.
 - R-19 FG. BATT INSULATION
 - 4 MIL POLY VAPOR BARRIER
 - 1/2" GYPSUM BOARD

- RIM AREA CONSTRUCTION:**
- CLOSED CELL SPRAYED FOAM INSUL. (R10 MIN.) @ RIM AREA AND CANTS.

- WALL CONSTRUCTION:**
- SIMILAR TO ABOVE

- SILL CONSTRUCTION:**
- 2x8 SILL PLATE & SEALER
 - 1/2" ANCHOR BOLTS @ 48" O.C.

- FOUNDATION CONSTRUCTION:**
- FOX BLOCK ICF FOUNDATION WALL (SEE FOUNDATION FOR SIZING)

NOTE!!! SEE 'FOX BLOCKS' ICF SYSTEM SPECIFICATIONS MANUAL FOR INSTALLATION INSTRUCTIONS.

ALL HEIGHT CALCULATIONS FOR ICF FOUNDATION ARE BASED ON THE USE OF FULL HEIGHT(16') LOGIX FORMS

NOTE!!! 8'-1 1/8" PLATE HEIGHT @ ENTIRE FIRST FLOOR (TYP.)

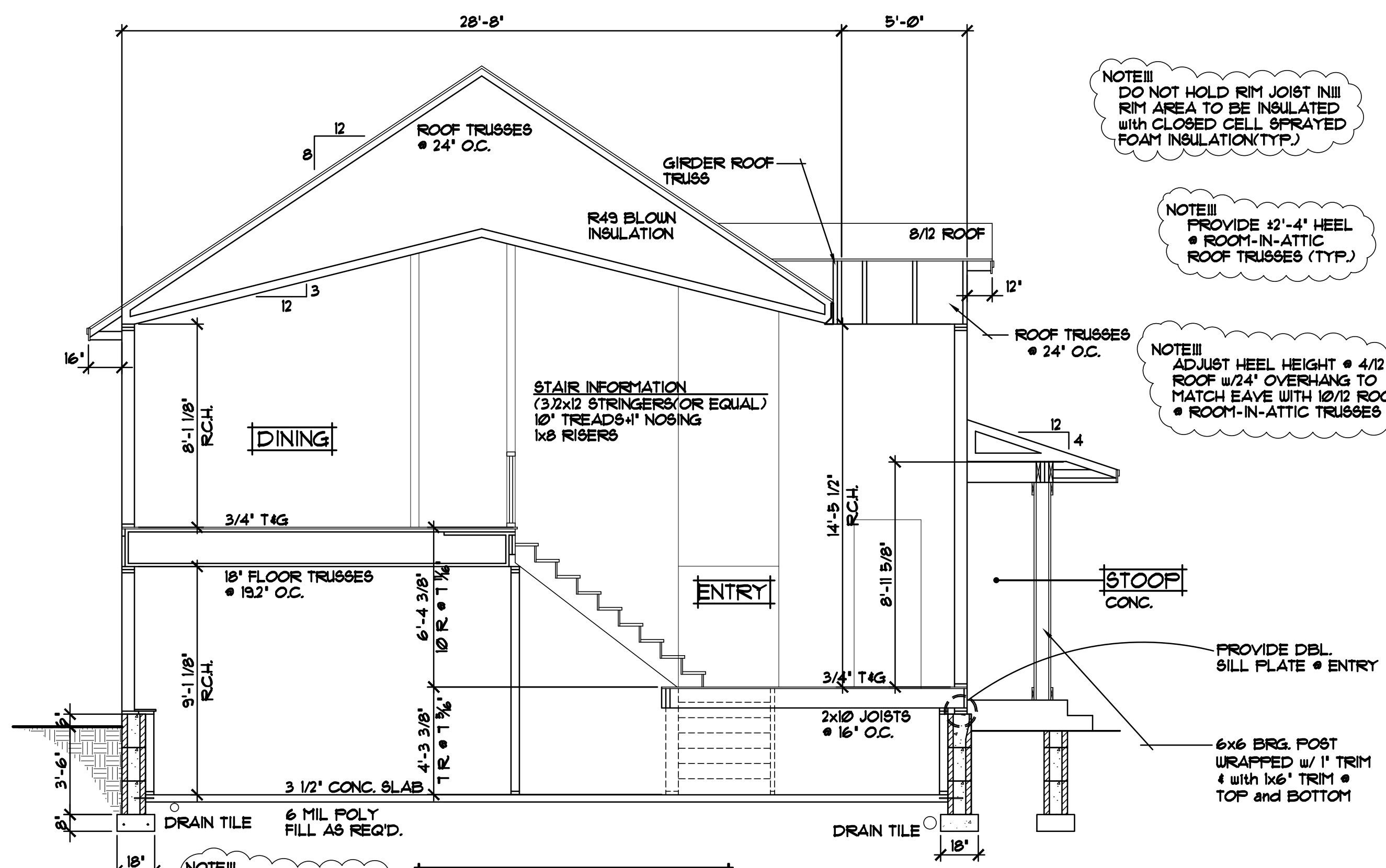
NOTE!!! PROVIDE ENERGY HEEL @ ALL MAIN LEVEL ROOF TRUSSES (TYP.)

NOTE!!! DO NOT HOLD RIM JOIST IN!!! RIM AREA TO BE INSULATED WITH CLOSED CELL SPRAYED FOAM INSULATION(TYP.)

NOTE!!! PROVIDE #2'-4" HEEL @ ROOM-IN-ATTIC ROOF TRUSSES (TYP.)

NOTE!!! ADJUST HEEL HEIGHT @ 4/12 ROOF w/24" OVERHANG TO MATCH EAVE WITH 10/12 ROOF @ ROOM-IN-ATTIC TRUSSES

NOTE!!! BASEMENT SLAB HELD UP 6" FROM TOP OF FOOTING



CROSS SECTION 'A' 1/4" = 1'-0"

- ROOF CONSTRUCTION:**
- PREMANUFACTURED ROOF TRUSSES - ENGINEERED BY SUPPLIER
 - R49 BLOWN FIBERGLASS INSULATION
 - 1/150 ROOF VENT AT SOFFITS, 1/150 VENT AT RIDGE
 - AIR CHUTE AT EACH TRUSS SPACE
 - 1/16" OSB ROOF SHEATHING
 - 15# ROOFING FELT
 - ICE & WATER MEMBRANE APPLIED 24" FAST EXTERIOR WALL
 - 30 YEAR ARCHITECTURAL SHINGLES

- SOFFIT / FASCIA:**
- 2x6 SUB-FASCIA
 - MAINTENANCE FREE FASCIA COVER
 - MAINTENANCE FREE VENTED SOFFIT

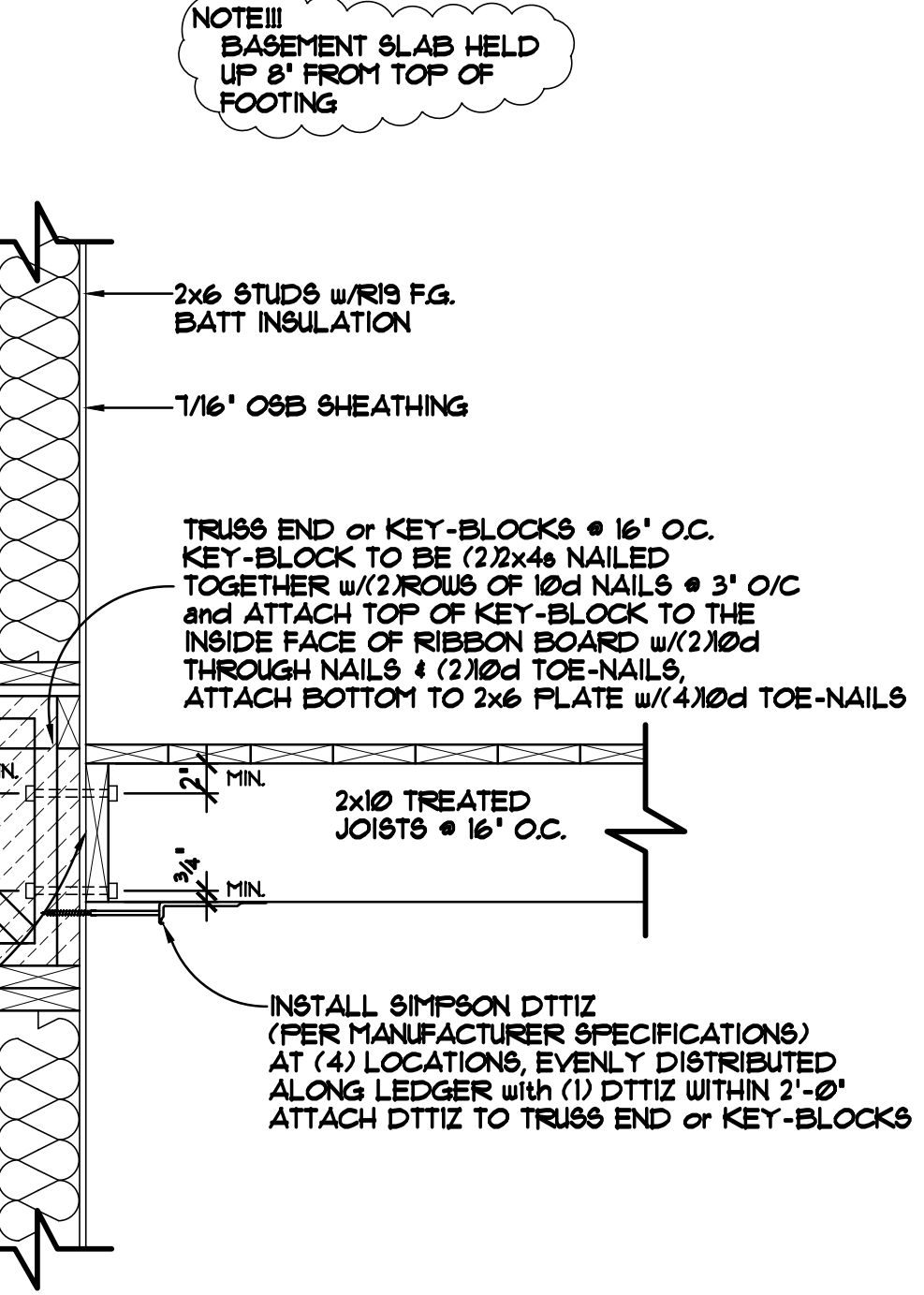
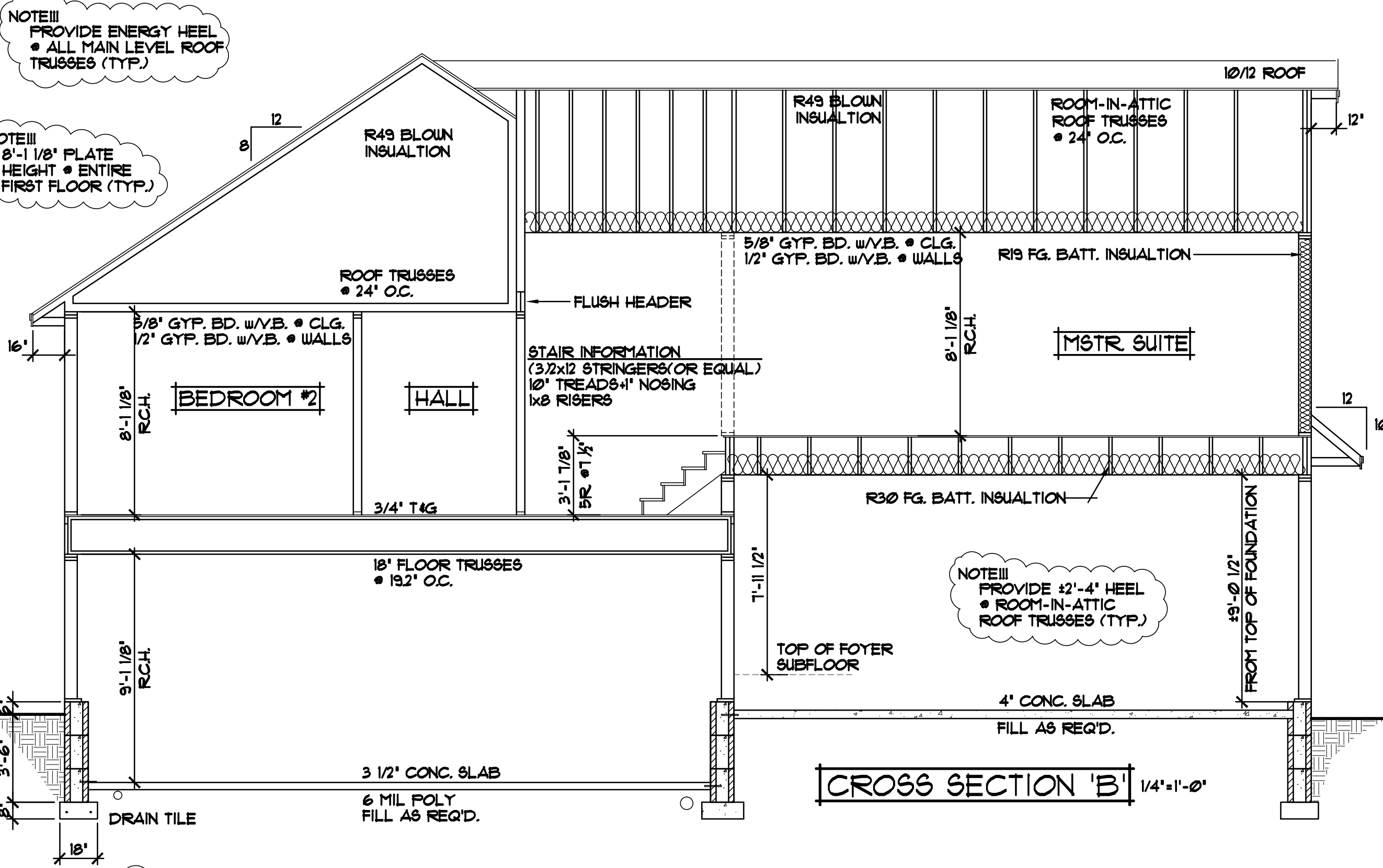
- WALL CONSTRUCTION:**
- HOUSE WRAP
 - 1/16" OSB SHEATHING
 - 2x6 STUDS @ 16" O.C.
 - WINDOWS PER SPEC'S
 - R-20 FG. BATT INSULATION
 - 4 MIL POLY VAPOR BARRIER
 - 1/2" GYPSUM BOARD

- RIM AREA CONSTRUCTION:**
- CLOSED CELL SPRAYED FOAM INSUL. (R10 MIN.) @ RIM AREA AND CANTS.

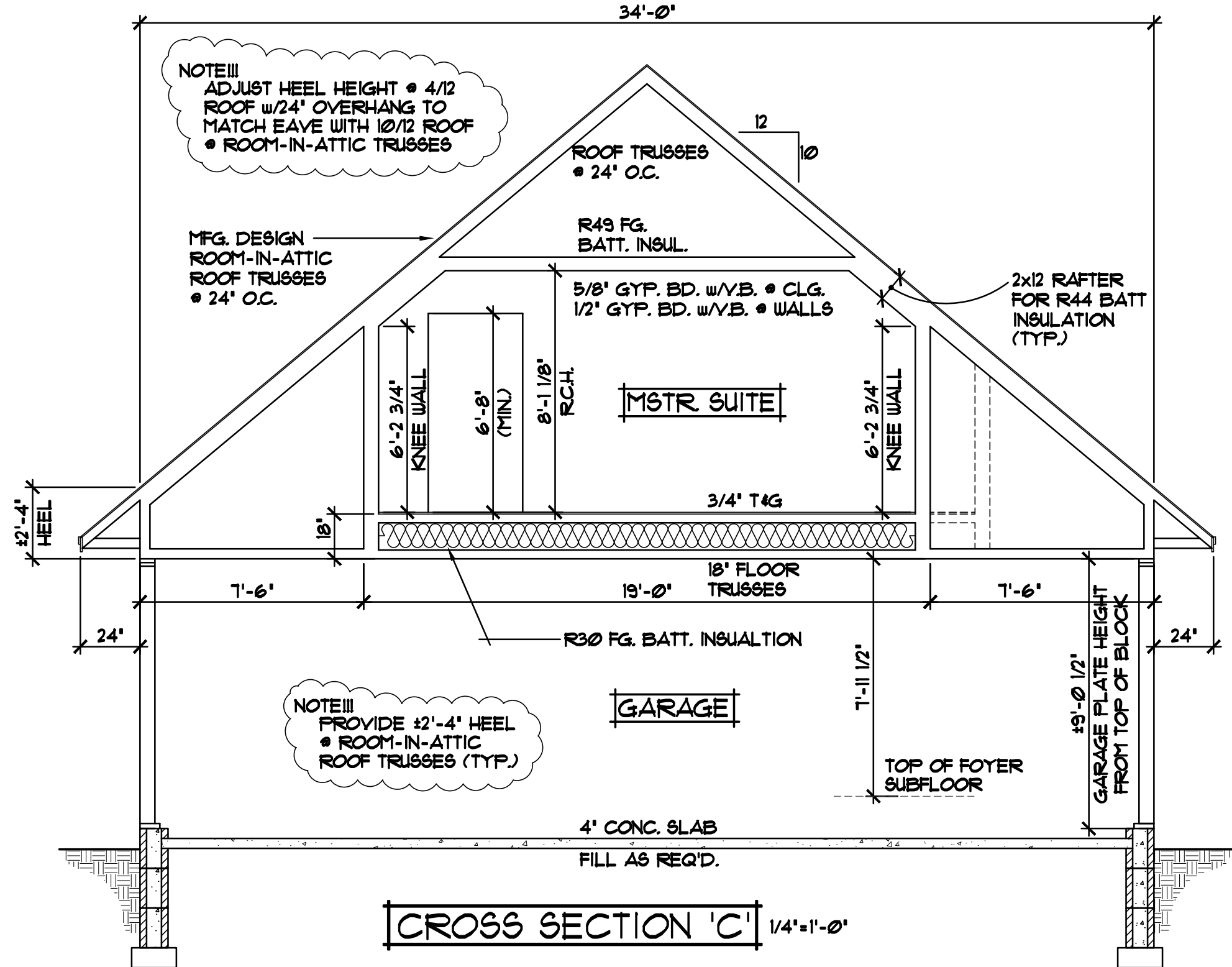
- WALL CONSTRUCTION:**
- SIMILAR TO ABOVE

- SILL CONSTRUCTION:**
- 2x8 SILL PLATE & SEALER
 - 1/2" ANCHOR BOLTS @ 48" O.C.

- FOUNDATION CONSTRUCTION:**
- FOX BLOCK ICF FOUNDATION WALL (SEE FOUNDATION FOR SIZING)



DECK LEDGER DETAIL 1'-1'-0"
FOR OPTIONAL REAR DECK ATTACHMENT



CROSS SECTION 'C' 1/4'-1'-0"

ALL HEIGHT CALCULATIONS FOR ICF FOUNDATION ARE BASED ON THE USE OF FULL HEIGHT (16") LOGIX FORMS

NOTE III SEE 'FOX BLOCKS' ICF SYSTEM SPECIFICATIONS MANUAL FOR INSTALLATION INSTRUCTIONS

NOTE III ADJUST HEEL HEIGHT @ 4/12 ROOF w/24' OVERHANG TO MATCH EAVE WITH 10/12 ROOF @ ROOM-IN-ATTIC TRUSSES

NOTE III DO NOT HOLD RIM JOIST IN RIM AREA TO BE INSULATED WITH CLOSED CELL SPRAYED FOAM INSULATION (TYP.)

NOTE III PROVIDE 32'-4" HEEL @ ROOM-IN-ATTIC ROOF TRUSSES (TYP.)

NOTE III ADJUST HEEL HEIGHT @ 4/12 ROOF w/24' OVERHANG TO MATCH EAVE WITH 10/12 ROOF @ ROOM-IN-ATTIC TRUSSES

NOTE III PROVIDE 32'-4" HEEL @ ROOM-IN-ATTIC ROOF TRUSSES (TYP.)

REVISIONS
XX/XX/XX 0000 BY:XX
XX/XX/XX 0000 BY:XX

SPECIAL NOTICE:
CROIX DESIGN AND DRAFTING, INC. ACCEPTS NO RESPONSIBILITY FOR ERRORS AND/OR OMISSIONS. THESE DRAWINGS ARE DESIGN CONCEPT ONLY. EVERY EFFORT HAS BEEN MADE TO PREPARE THESE DRAWINGS ACCURATELY. HOWEVER, THE USER SHALL BE RESPONSIBLE FOR VERIFYING ALL DIMENSIONS AND BEING RESPONSIBLE FOR ANY CHANGES OR ADJUSTMENTS REQUIRED DURING ACTUAL CONSTRUCTION. NO REPRESENTATION IS MADE OR IMPLIED FOR ACCURACY.

OFFICE: 763.757.5997
FAX: 763.757.4383
ANDOVER, MINNESOTA
WWW.CROIXDESIGN.COM



BUILT BY:
ELEVATE BUILDERS, LLC