

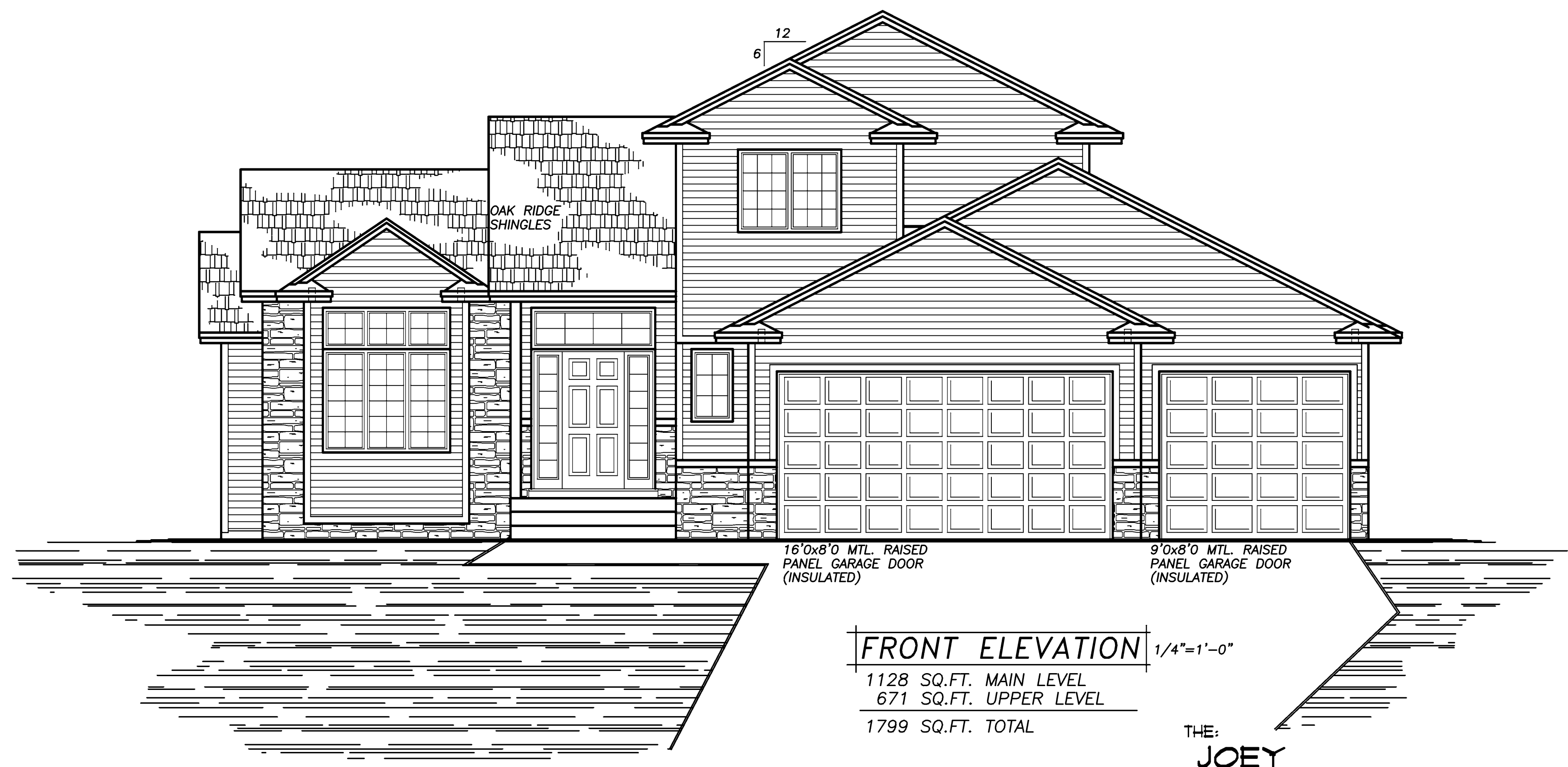
REVISIONS:	BY
95112	R.M.
01189	R.M.
02281	R.M.

NOTE!!!
10'-1 1/8" PLATE
HGT. AT GREAT RM.
ONLY.

NOTE!!!
HOLD FLOOR TRUSSES IN
FOR 1 1/2" R10 THERMAX
FOAM BD. INSUL. + SHTH'G. AT
ENTIRE PERIMETER @ RIM AREA(TYP.)
(SEE DETAIL SHT . #5)

SPECIAL NOTICE:
CROIX CUSTOM CONCEPTS ACCEPTS NO RESPONSIBILITY FOR ERRORS OR OMISSIONS. THESE DRAWINGS ARE DESIGN CONCEPT ONLY. EVERY EFFORT HAS BEEN MADE DESIGNING AND PREPARING THESE PLANS AND CHECKING THEM FOR ACCURACY. THE OWNER, SUPPLIERS, AND SUB-CONTRACTORS MUST CHECK ALL DETAILS AND DIMENSIONS AND BE RESPONSIBLE FOR ANY CHANGES OR ADJUSTMENTS REQUIRED DURING ACTUAL CONSTRUCTION. NO REPRESENTATION IS MADE OR IMPLIED FOR ACCURACY.

- CRESTLINE VINYLCREST WINDOWS SPEC'D.
- VINYL SIDING
- ALUMINUM SOFFITS/FASCIA



FRONT ELEVATION 1/4"=1'-0"
1128 SQ.FT. MAIN LEVEL
671 SQ.FT. UPPER LEVEL
1799 SQ.FT. TOTAL

THE:
JOEY

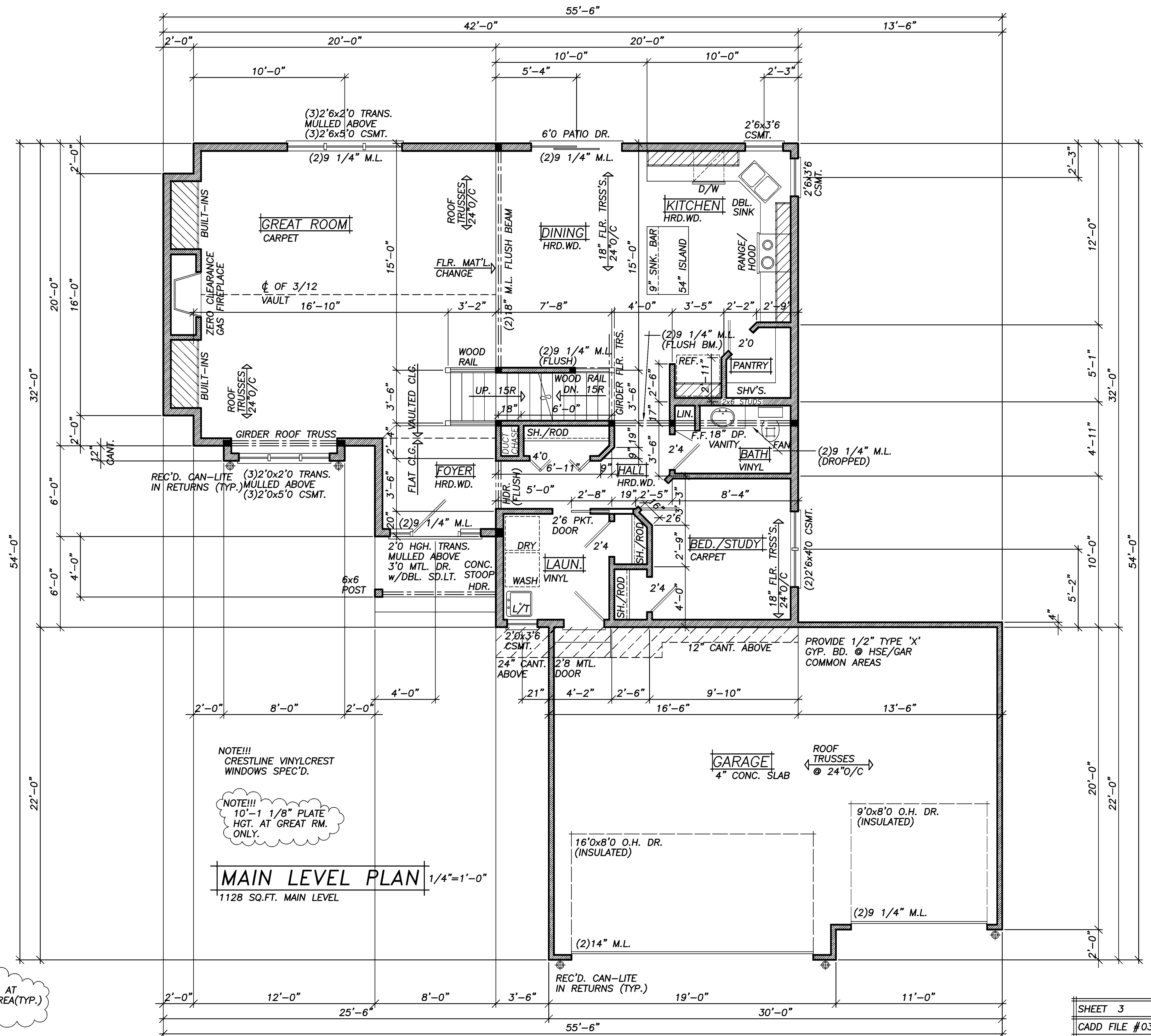
©2003 COPYRIGHT, CROIX CUSTOM CONCEPTS, INC.

THIS NEW HOME PLAN MAY BE USED TO CONSTRUCT (1)ONE NEW BUILDING. EACH ADDITIONAL NEW BUILDING WILL BE REQUIRED TO PURCHASE A RE-USE LICENSE.

CROIX CUSTOM CONCEPTS
DESIGN & DRAFTING
14115 Lincoln Street N.E., Suite 400
Ham Lake, MN. 55304
PH:(763)-323-0411 FAX:(763)-323-0660

NEW HOUSE BUILT BY:
ELEVATE BUILDERS, LLC
P.O. BOX 114
FOREST LAKE, MN 55025

DRAWN	J.R.
CHECKED	
DATE	12-09-03
SCALE	AS NOTED
JOB NO.	
CADD FILE NO.	03447
SHEET	1
OF 5 SHEETS	

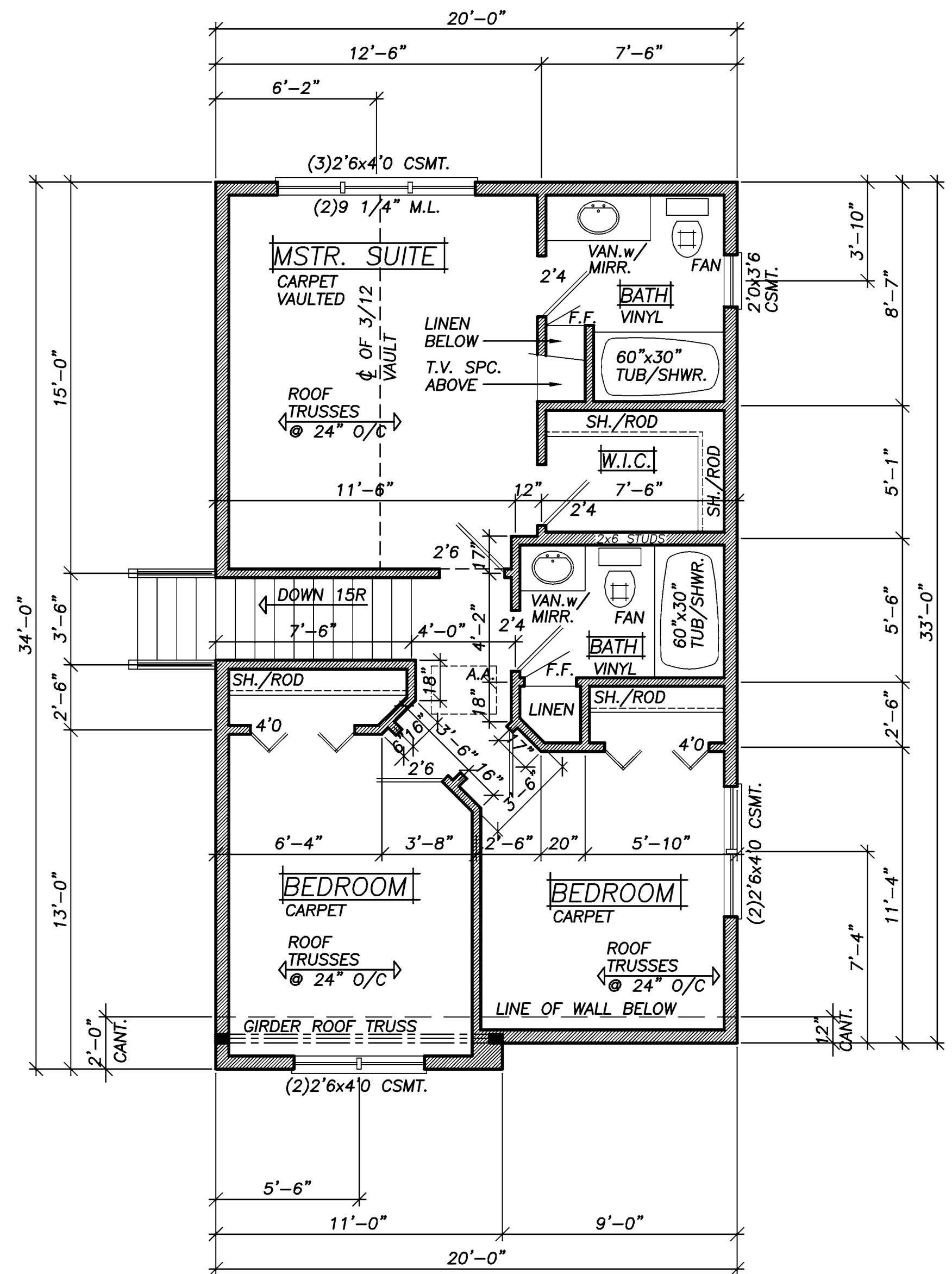


NOTE!!!
CRESTLINE VINYLCREST
WINDOWS SPEC'D.

NOTE!!!
10'-1 1/8" PLATE
HGT. AT GREAT RM.
ONLY.

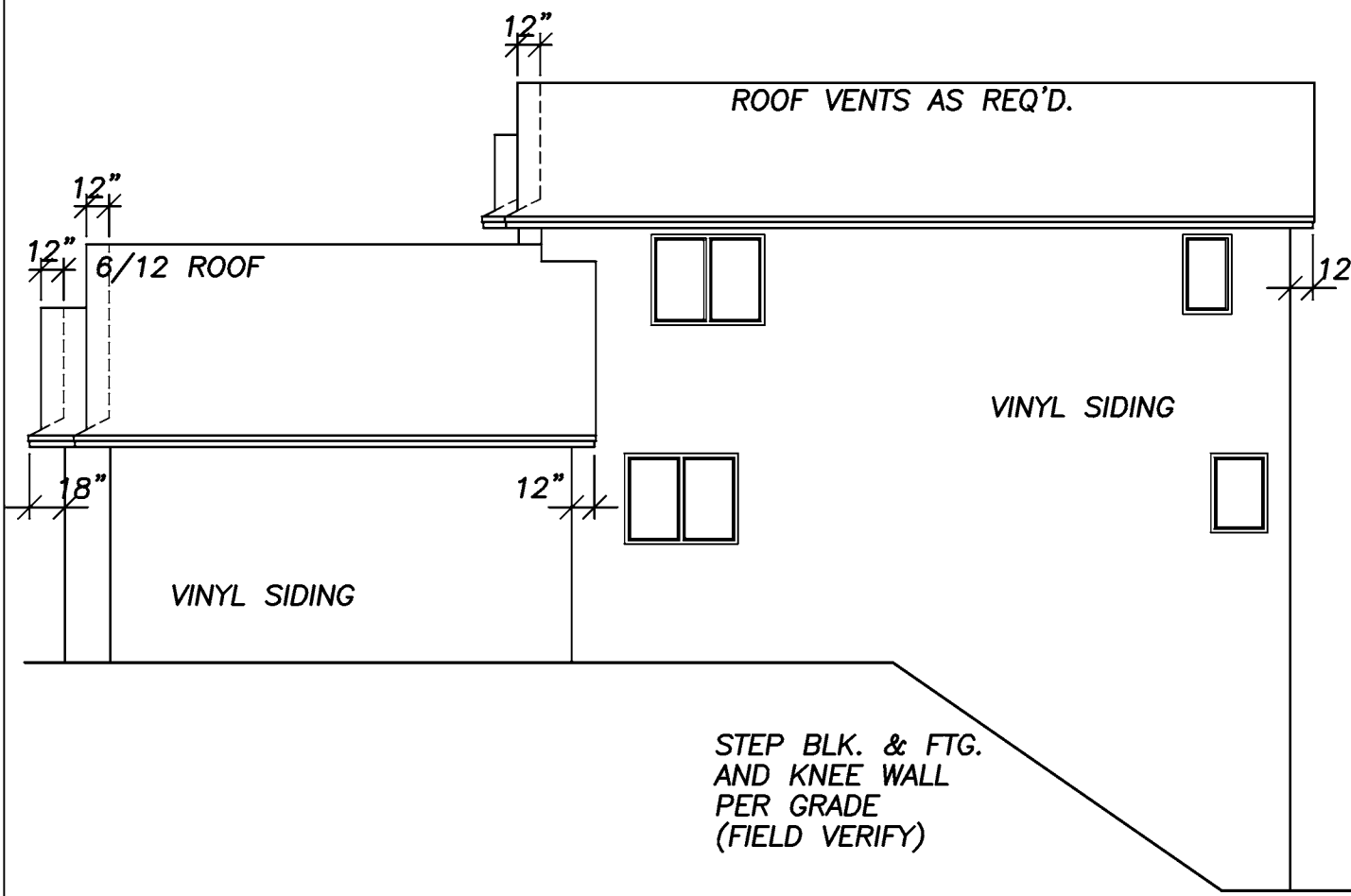
MAIN LEVEL PLAN 1/4" = 1'-0"
1128 SQ.FT. MAIN LEVEL

NOTE!!!
HOLD FLOOR TRUSSES IN
FOR 1 1/2" R10 THERMAX
FOAM BD. INSUL. + SHTH'G. AT
ENTIRE PERIMETER @ RIM AREA(TYP.)
(SEE DETAIL SHT. #5)

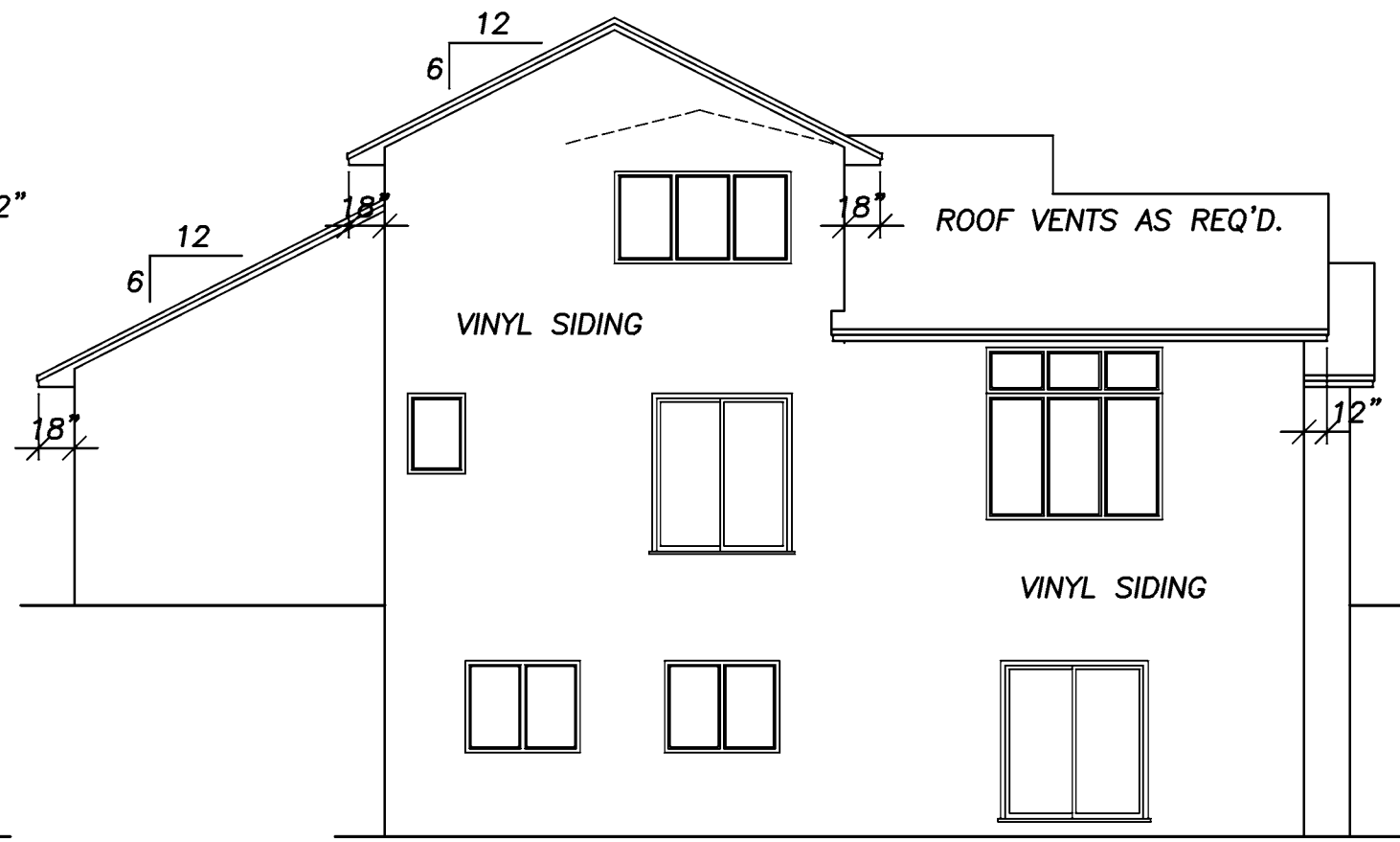


NOTE!!!
 HOLD FLOOR TRUSSES IN
 FOR 1 1/2" R10 THERMAX
 FOAM BD. INSUL. + SHT'G. AT
 ENTIRE PERIMETER @ RIM AREA(TYP.)
 (SEE DETAIL SHT . #5)

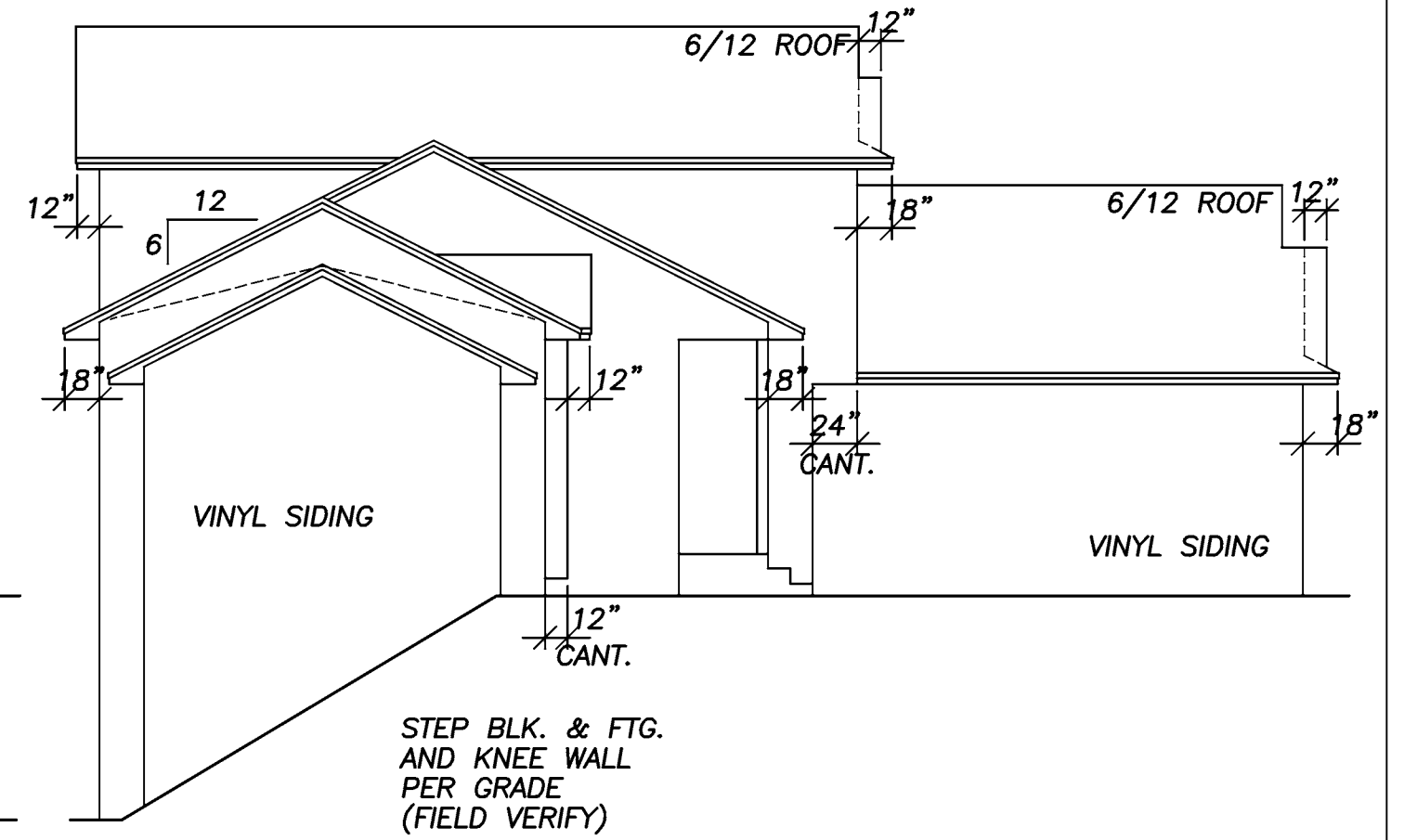
UPPER LEVEL PLAN 1/4"=1'-0"
 671 SQ.FT.



RIGHT ELEVATION 1/8"=1'-0"

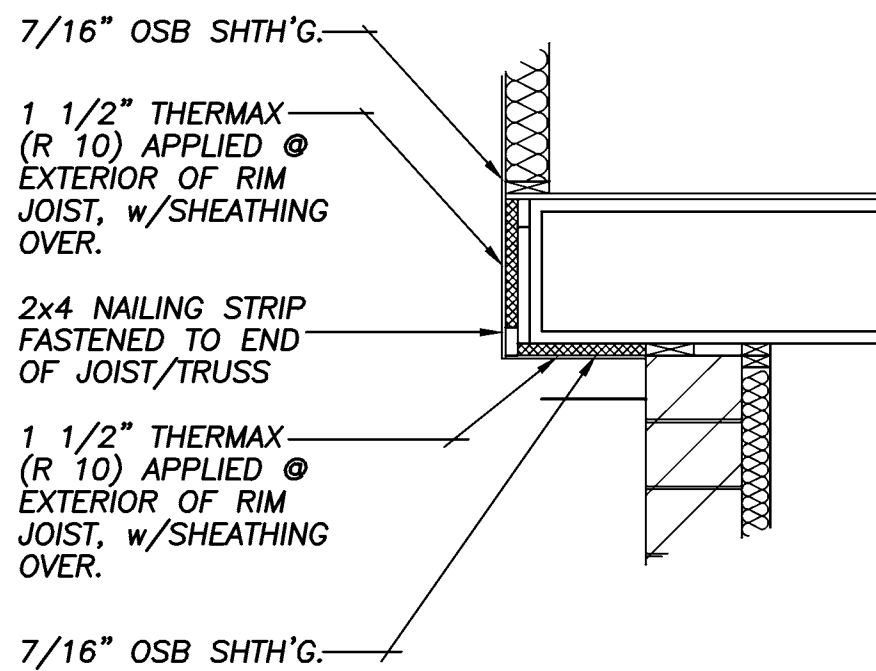


REAR ELEVATION 1/8"=1'-0"

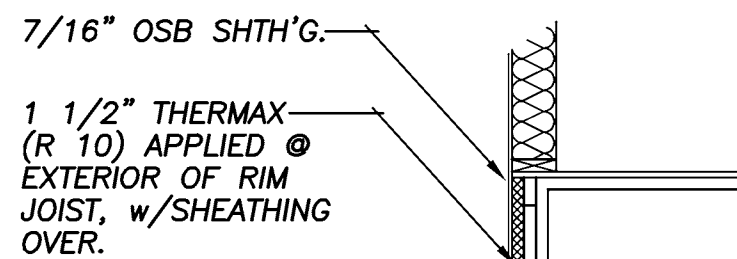


LEFT ELEVATION 1/8"=1'-0"

NOTE!!!
HOLD FLOOR TRUSSES IN FOR 1 1/2" R10 THERMAX FOAM BD. INSUL. + SHTH'G. AT ENTIRE PERIMETER @ RIM AREA(TYP.)

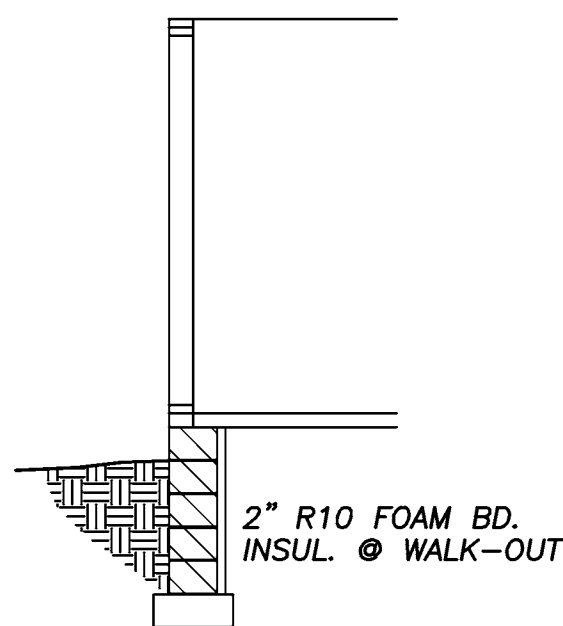


RIM JOIST DETAIL 1/2"=1'-0"
@ CANT'D. FLOOR (R10 INSUL.)

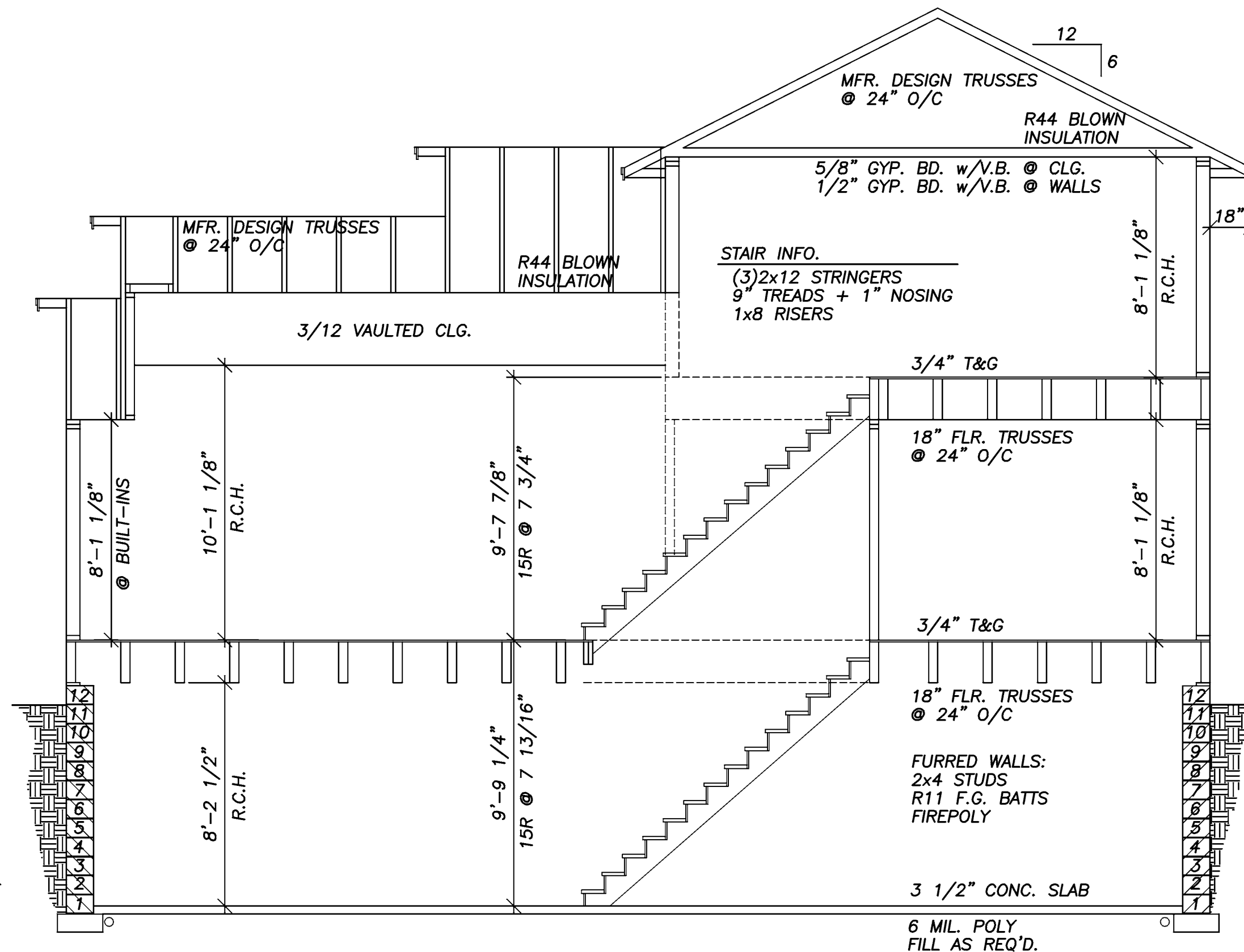


NOTE!!!
WHERE DECK LEDGER BOARDS ARE FASTENED TO RIM JOIST INSTALL 1 1/2" THERMAX TO INSIDE OF RIM JOIST CUT TO FIT BETWEEN EACH JOIST/TRUSS AND CAULK ALL EDGES(TYP.)

RIM JOIST DETAIL 1/2"=1'-0"
STANDARD (w/R10 INSUL.)



WALK-OUT 1/4"=1'-0"



CROSS SECTION 1/4"=1'-0"

ROOF VENTS AS REQ'D.
ASPHALT SHINGLES
ICE & WATERSHIELD
15# FELT PAPER
1/2" OSB SHTH'G.
AIR CHUTES EA. TRUSS

ALUMINUM SOFFITS
/FASCIA

VINYL SIDING
HOUSEWRAP
7/16" OSB SHTH'G.
2x6 STUDS @ 16" O/C
R19 F.G. BATT INSUL.
1/2" GYP.BD.
VAPOR BARRIER

SEE RIM INSUL.
DETAIL THIS SHT.

SIM. TO ABOVE

SEE RIM INSUL.
DETAIL THIS SHT.

2x6 TRT'D. SILL w/
SEALER
ANCHOR STRAPS/BOLTS
@ 6'-0" O/C
DAMP PROOFING