

REVISIONS:	BY
00015	S.E.
00231	R.M.
01029	R.M.
01032	R.M.

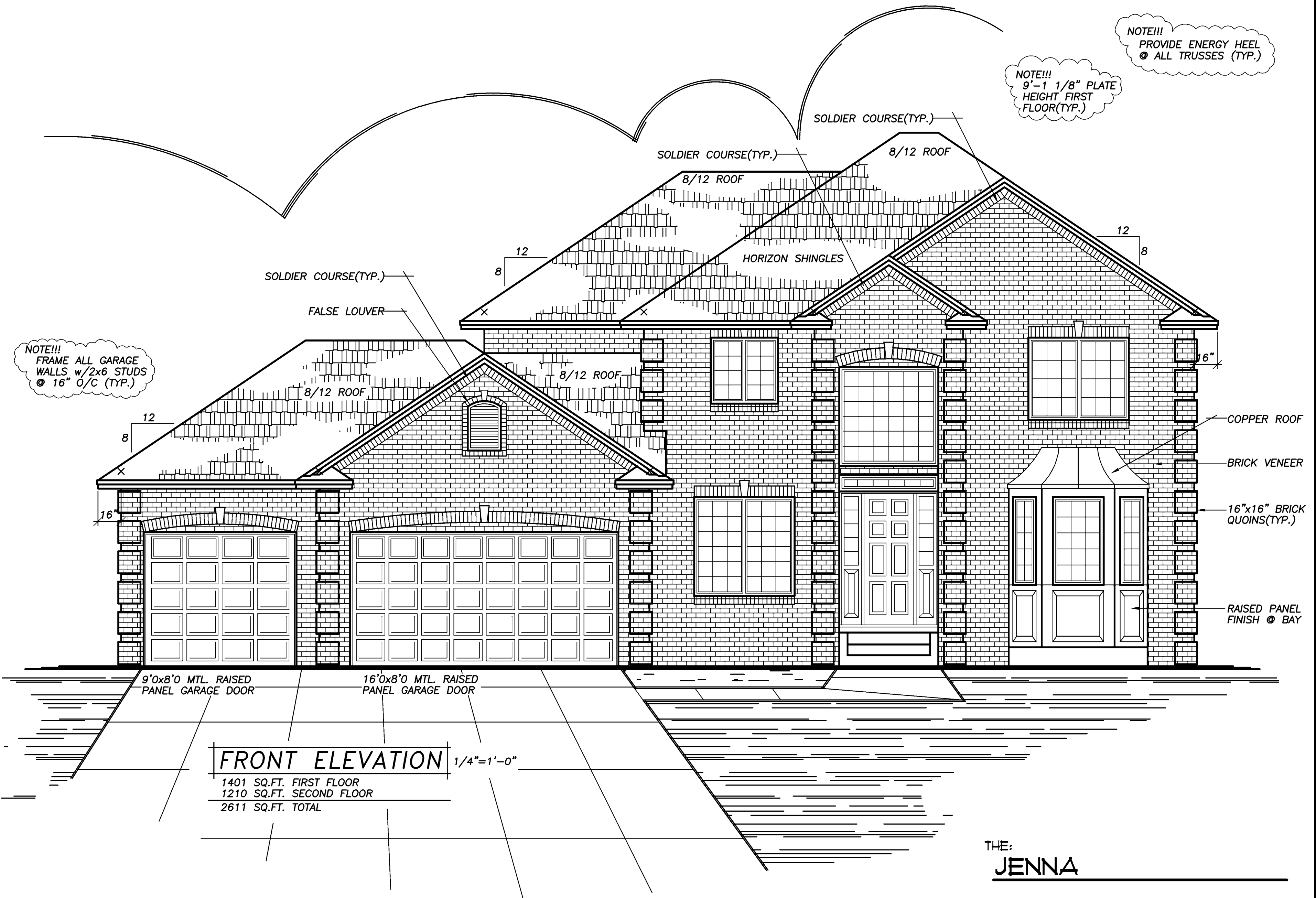
NOTE!!!
 HOLD FLOOR TRUSSES IN
 FOR 1 1/2" R10 THERMAX
 FOAM BD. INSUL. + SHTH'G. AT
 ENTIRE PERIMETER @ RIM AREA(TYP.)
 (SEE DETAIL SHT. #5)

- MARVIN INTEGRITY WINDOWS
- ALUMINUM SOFFITS/FASCIA
- VINYL SIDING @ SIDES & REAR
- BRICK FRONT AS SHOWN(VERIFY)
- SHOWN w/OPTIONAL WDW. GRIDS

NOTE!!!
 PROVIDE ENERGY HEEL
 @ ALL TRUSSES (TYP.)

NOTE!!!
 9'-1 1/8" PLATE
 HEIGHT FIRST
 FLOOR(TYP.)

SPECIAL NOTICE:
 CROIX CUSTOM CONCEPTS ACCEPTS NO RESPONSIBILITY
 FOR ERRORS OR OMISSIONS. THESE DRAWINGS ARE
 DESIGN CONCEPT ONLY. EVERY EFFORT HAS BEEN
 MADE DESIGNING AND PREPARING THESE PLANS AND
 CHECKING THEM FOR ACCURACY. THE OWNER,
 SUPPLIERS, AND SUB-CONTRACTORS MUST CHECK
 ALL DETAILS AND DIMENSIONS AND BE RESPONSIBLE
 FOR ANY CHANGES OR ADJUSTMENTS REQUIRED
 DURING ACTUAL CONSTRUCTION. NO REPRESENTATION
 IS MADE OR IMPLIED FOR ACCURACY



NOTE!!!
 FRAME ALL GARAGE
 WALLS w/2x6 STUDS
 @ 16" O/C (TYP.)

FRONT ELEVATION 1/4"=1'-0"
 1401 SQ.FT. FIRST FLOOR
 1210 SQ.FT. SECOND FLOOR
 2611 SQ.FT. TOTAL

THE:
JENNA

©2000-2004 COPYRIGHT, CROIX CUSTOM CONCEPTS, INC.

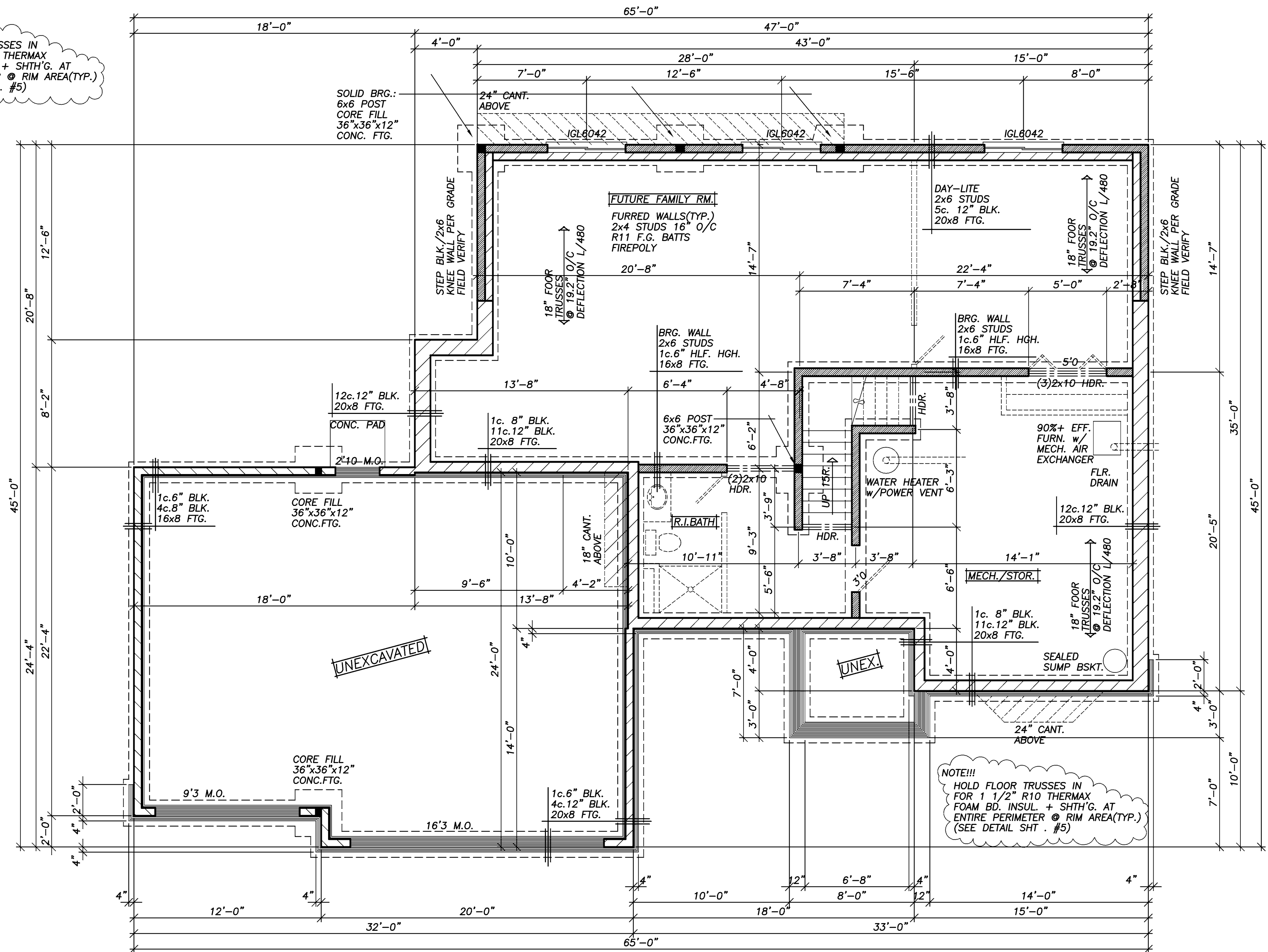
THIS NEW HOME PLAN MAY BE USED TO CONSTRUCT
 (1)ONE NEW BUILDING. EACH ADDITIONAL NEW BUILDING
 WILL BE REQUIRED TO PURCHASE A RE-USE LICENSE.

CROIX CUSTOM CONCEPTS
 DESIGN & DRAFTING
 14115 Lincoln Street, N.E. Suite 400
 Ham Lake, MN. 55304
 PH:(763)-323-8411 FAX:(763)-323-8660

NEW HOUSE BUILT BY:
ELEVATE BUILDERS, LLC
 P.O. BOX 114
 FOREST LAKE, MN 55025

DRAWN	C.C.
CHECKED	
DATE	5-4-04
SCALE	AS NOTED
JOB NO.	
CADD FILE NO.	04188
SHEET	1
OF	7 SHEETS

NOTE!!!
 HOLD FLOOR TRUSSES IN FOR 1 1/2" R10 THERMAX FOAM BD. INSUL. + SHTH'G. AT ENTIRE PERIMETER @ RIM AREA(TYP.) (SEE DETAIL SHT. #5)



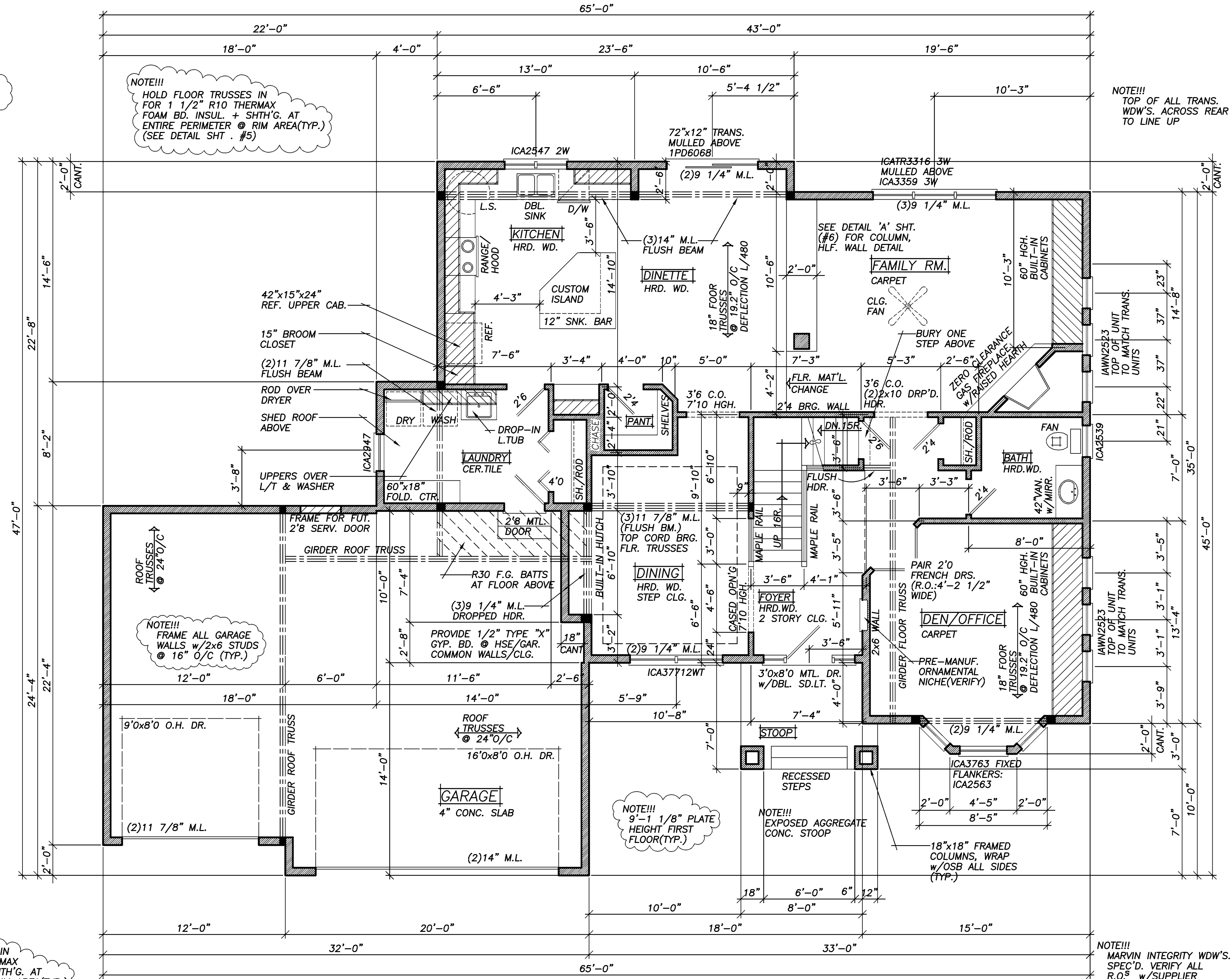
ALL HEIGHT CALCULATIONS FOR FOUNDATIONS ARE BASED ON THE USE OF FULL 8" HIGH BLOCK w/ 3/8" JOINTS. IF MODULAR BLOCK IS USED, CONTRACTORS SHOULD ADJUST HEIGHTS ACCORDINGLY.

FOUNDATION PLAN
 1/4"=1'-0"

NOTE!!!
PROVIDE ENERGY HEEL
@ ALL TRUSSES (TYP.)

NOTE!!!
HOLD FLOOR TRUSSES IN
FOR 1 1/2" R10 THERMAX
FOAM BD. INSUL. + SHTH'G. AT
ENTIRE PERIMETER @ RIM AREA(TYP.)
(SEE DETAIL SHT. #5)

NOTE!!!
TOP OF ALL TRANS.
WDW'S. ACROSS REAR
TO LINE UP



NOTE!!!
HOLD FLOOR TRUSSES IN
FOR 1 1/2" R10 THERMAX
FOAM BD. INSUL. + SHTH'G. AT
ENTIRE PERIMETER @ RIM AREA(TYP.)
(SEE DETAIL SHT. #5)

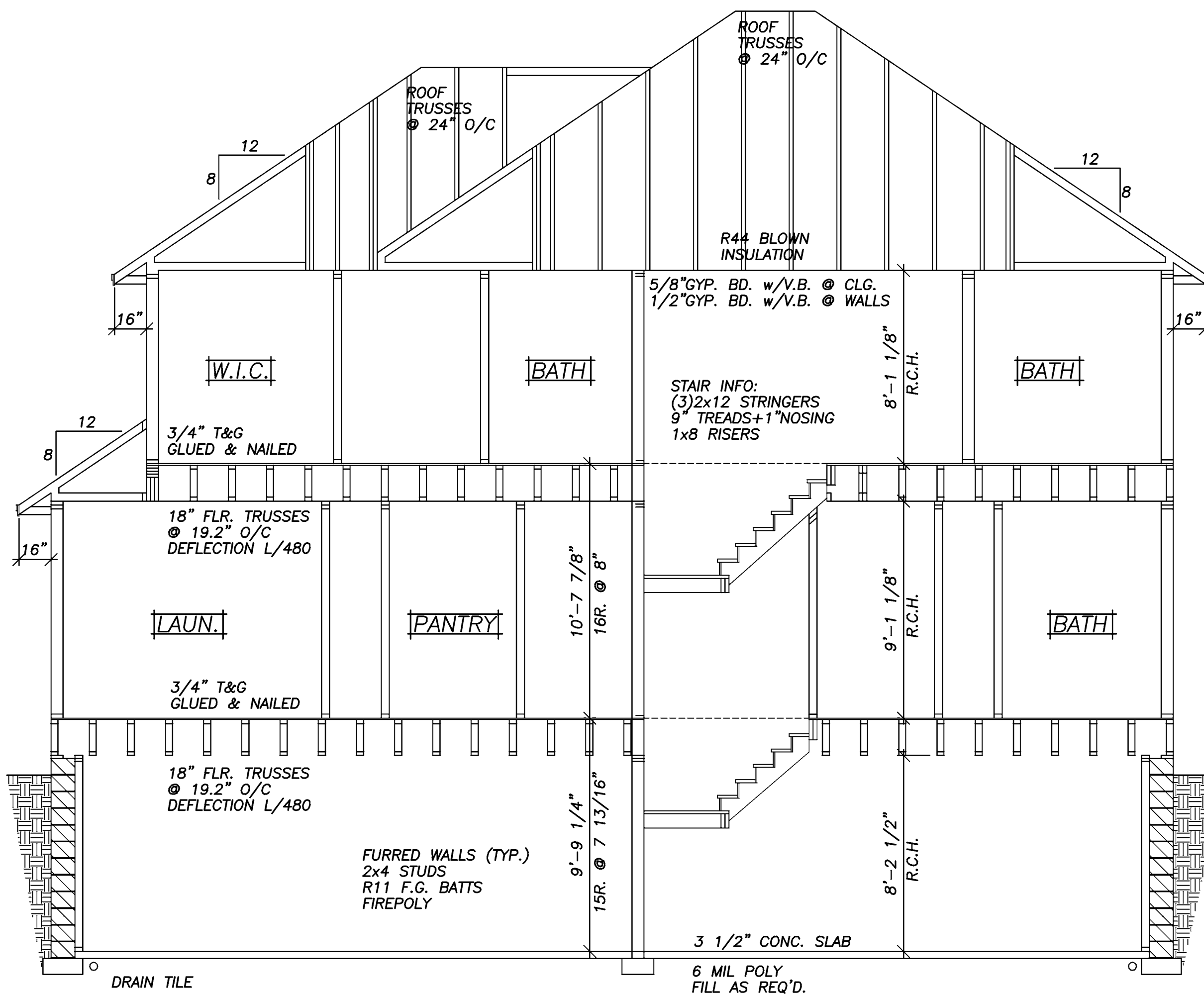
NOTE!!!
9'-1 1/8" PLATE
HEIGHT FIRST
FLOOR(TYP.)

NOTE!!!
EXPOSED AGGREGATE
CONC. STOOP

NOTE!!!
18"x18" FRAMED
COLUMNS, WRAP
w/OSB ALL SIDES
(TYP.)

NOTE!!!
MARVIN INTEGRITY WDW'S.
SPEC'D. VERIFY ALL
R.O.S. w/SUPPLIER

FIRST FLOOR PLAN 1/4"=1'-0"
1401 SQ.FT.



ROOF VENTS AS REQ'D.
ASPHALT SHINGLES
ICE & WATERSHIELD
15# FELT PAPER
1/2" OSB SHTH'G.
AIR CHUTES EA. TRUSS

ALUMINUM FASCIA
ALUMINUM SOFFITS

VINYL SIDING
HOUSEWRAP
7/16" OSB SHTH'G.
2x6 STUDS @ 16" O/C
R19 F.G. BATT INSUL.
VAPOR BARRIER
1/2 GYP. BD.

SEE DETAIL FOR RIM AREA

VINYL SIDING
HOUSEWRAP
7/16" OSB SHTH'G.
2x6 STUDS @ 16" O/C
R19 F.G. BATT INSUL.
VAPOR BARRIER
1/2 GYP. BD.

SEE DETAIL FOR RIM AREA

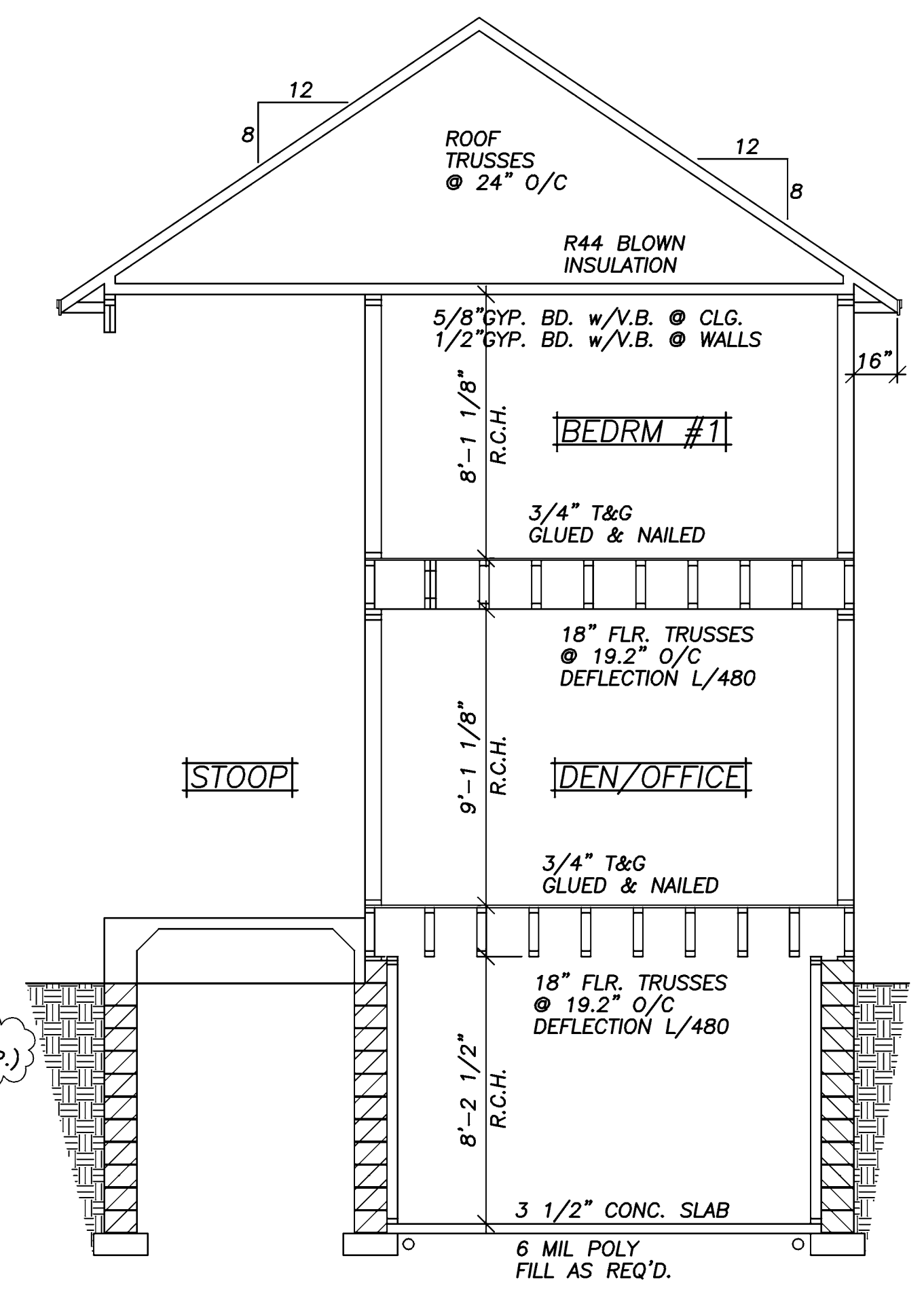
2x6 TRT'D PLATE
SILL GASKET
ANCHOR BOLTS
6'0 O/C(TYP.)

DAMP PROOFING

20"x8" CONC.FTG.

NOTE!!!
PROVIDE ENERGY HEEL
@ ALL TRUSSES (TYP.)

NOTE!!!
HOLD FLOOR TRUSSES IN
FOR 1 1/2" R10 THERMAX
FOAM BD. INSUL. + SHTH'G. AT
ENTIRE PERIMETER @ RIM AREA(TYP.)

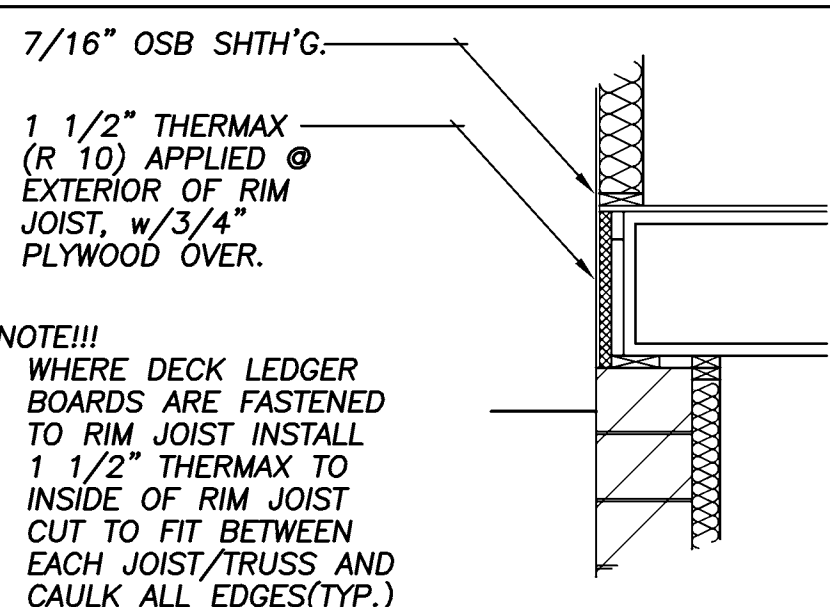


NOTE!!!
HOLD FLOOR TRUSSES IN
FOR 1 1/2" R10 THERMAX
FOAM BD. INSUL. + SHTH'G. AT
ENTIRE PERIMETER @ RIM AREA(TYP.)

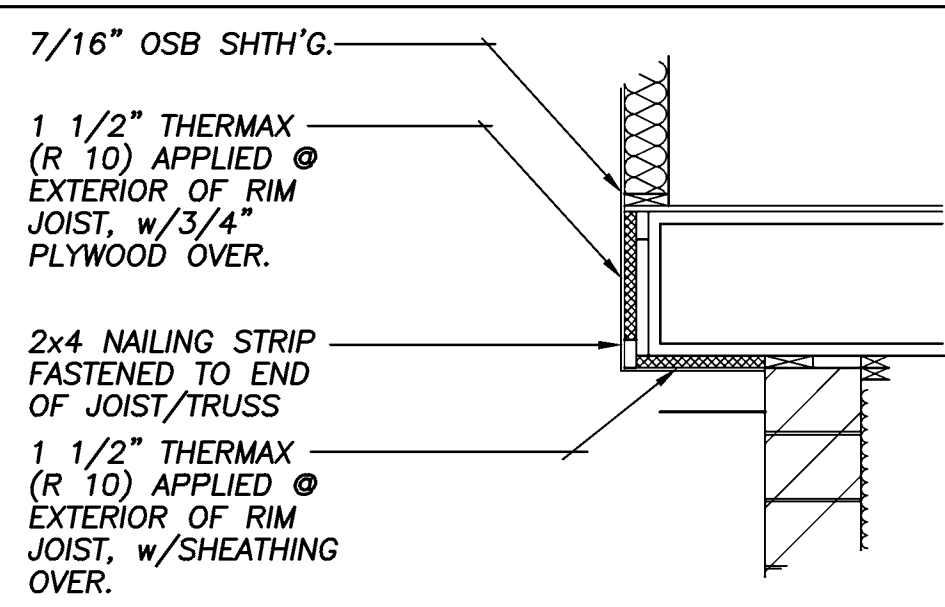
NOTE!!!
PROVIDE ENERGY HEEL
@ ALL TRUSSES (TYP.)

CROSS SECTION 1/4"=1'-0"

CROSS SECTION 1/4"=1'-0"

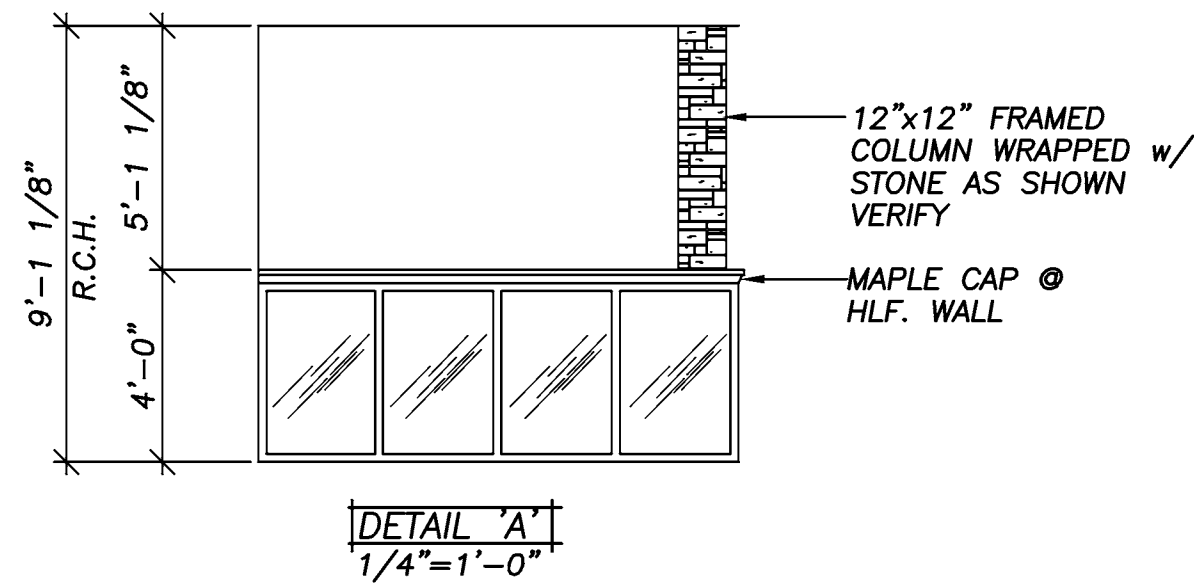


RIM JOIST DETAIL 1/2"=1'-0"
STANDARD (w/R10 INSUL.)



RIM JOIST DETAIL 1/2"=1'-0"
@ CANT'D. FLOOR (R10 INSUL.)

ALL HEIGHT CALCULATIONS FOR FOUNDATIONS ARE BASED ON THE USE OF FULL 8" HIGH BLOCK w/ 3/8" JOINTS. IF MODULAR BLOCK IS USED, CONTRACTORS SHOULD ADJUST HEIGHTS ACCORDINGLY.



NOTE!!!
PROVIDE ENERGY HEEL
@ ALL TRUSSES (TYP.)

NOTE!!!
HOLD FLOOR TRUSSES IN
FOR 1 1/2" R10 THERMAX
FOAM BD. INSUL. + SHTH'G. AT
ENTIRE PERIMETER @ RIM AREA(TYP.)
(SEE DETAIL SHT . #5)

ROOF VENTS AS REQ'D.
ASPHALT SHINGLES
ICE & WATERSHIELD
15# FELT PAPER
1/2" OSB SHTH'G.
AIR CHUTES EA. TRUSS

ALUMINUM FASCIA
ALUMINUM SOFFITS

VINYL SIDING
HOUSEWRAP
7/16" OSB SHTH'G.
2x6 STUDS @ 16" O/C
R19 F.G. BATT INSUL.
VAPOR BARRIER
1/2 GYP. BD.

SEE DETAIL FOR RIM AREA

VINYL SIDING
HOUSEWRAP
7/16" OSB SHTH'G.
2x6 STUDS @ 16" O/C
R19 F.G. BATT INSUL.
VAPOR BARRIER
1/2 GYP. BD.

SEE DETAIL FOR RIM AREA

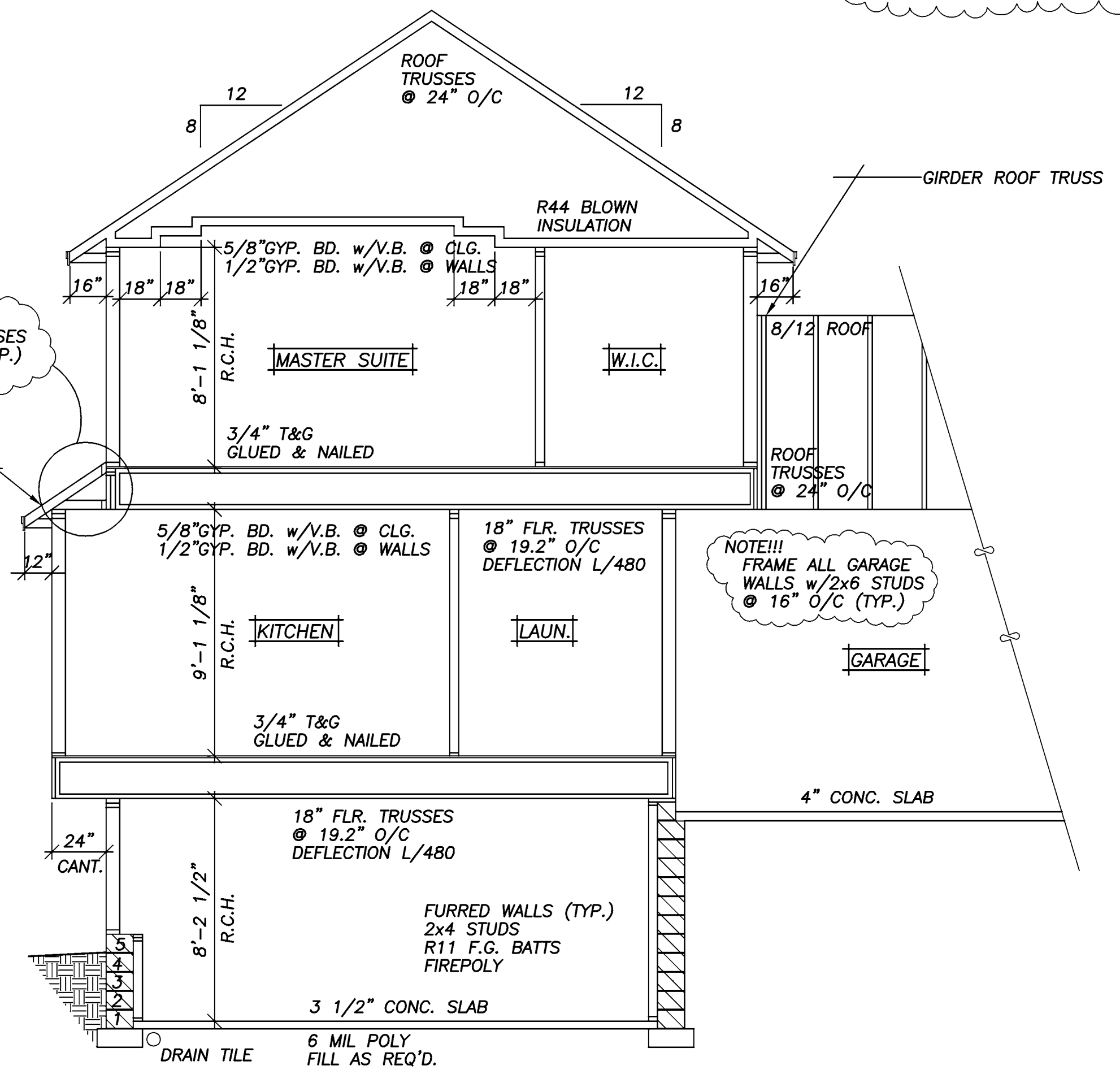
2x6 TRT'D PLATE
SILL GASKET
ANCHOR BOLTS
6'0" O/C(TYP.)

DAMP PROOFING

20"x8"
CONC.FTG.

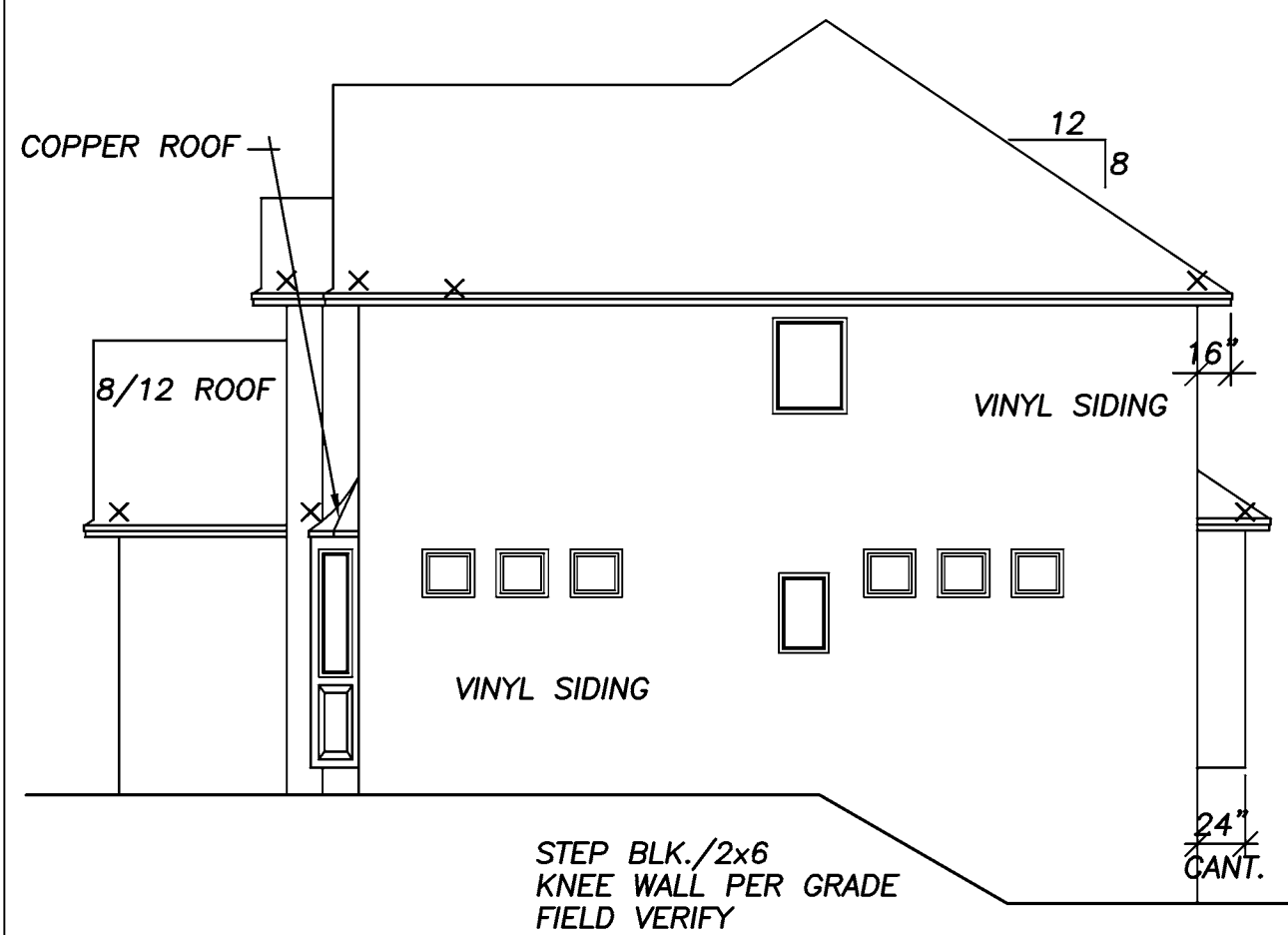
NOTE!!!
PROVIDE ENERGY HEEL
@ ALL TRUSSES (TYP.)

NOTE!!!
HOLD FLOOR TRUSSES IN
FOR 1 1/2" R10 THERMAX
FOAM BD. INSUL. + SHTH'G. AT
ENTIRE PERIMETER @ RIM AREA(TYP.)
(SEE DETAIL SHT . #5)

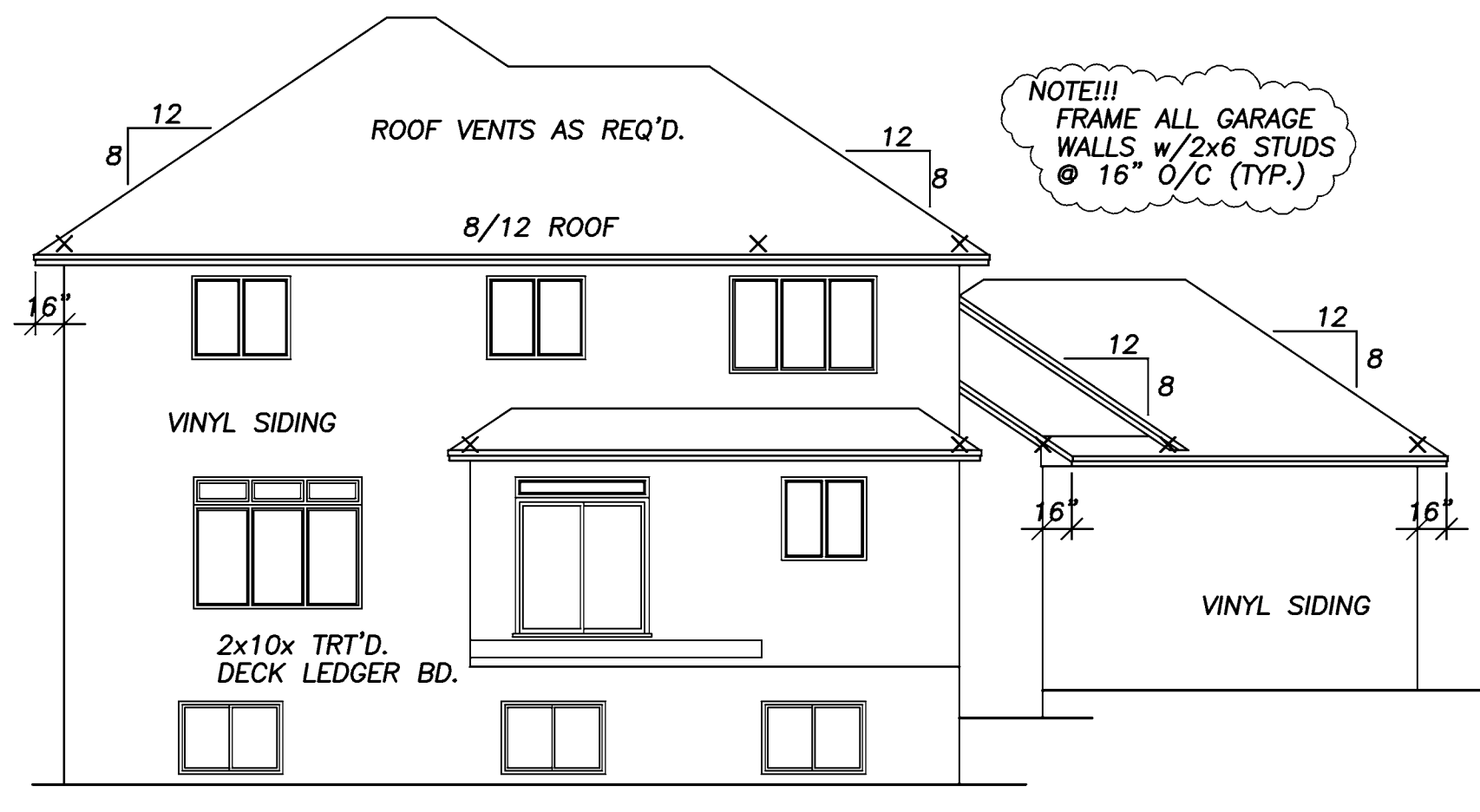


CROSS SECTION 1/4"=1'-0"

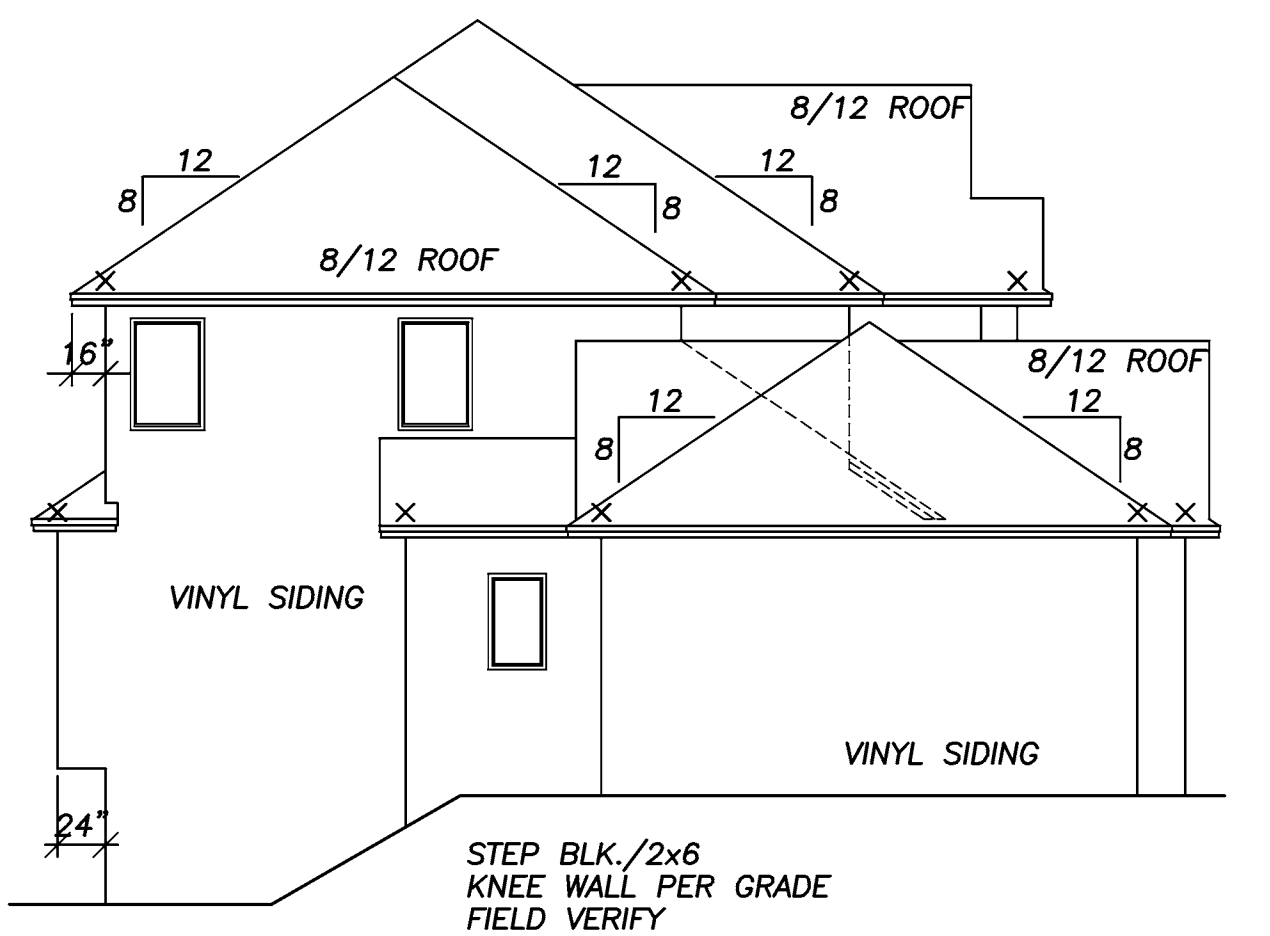
ALL HEIGHT CALCULATIONS FOR
FOUNDATIONS ARE BASED ON THE
USE OF FULL 8" HIGH BLOCK w/
3/8" JOINTS. IF MODULAR BLOCK
IS USED, CONTRACTORS SHOULD
ADJUST HEIGHTS ACCORDINGLY.



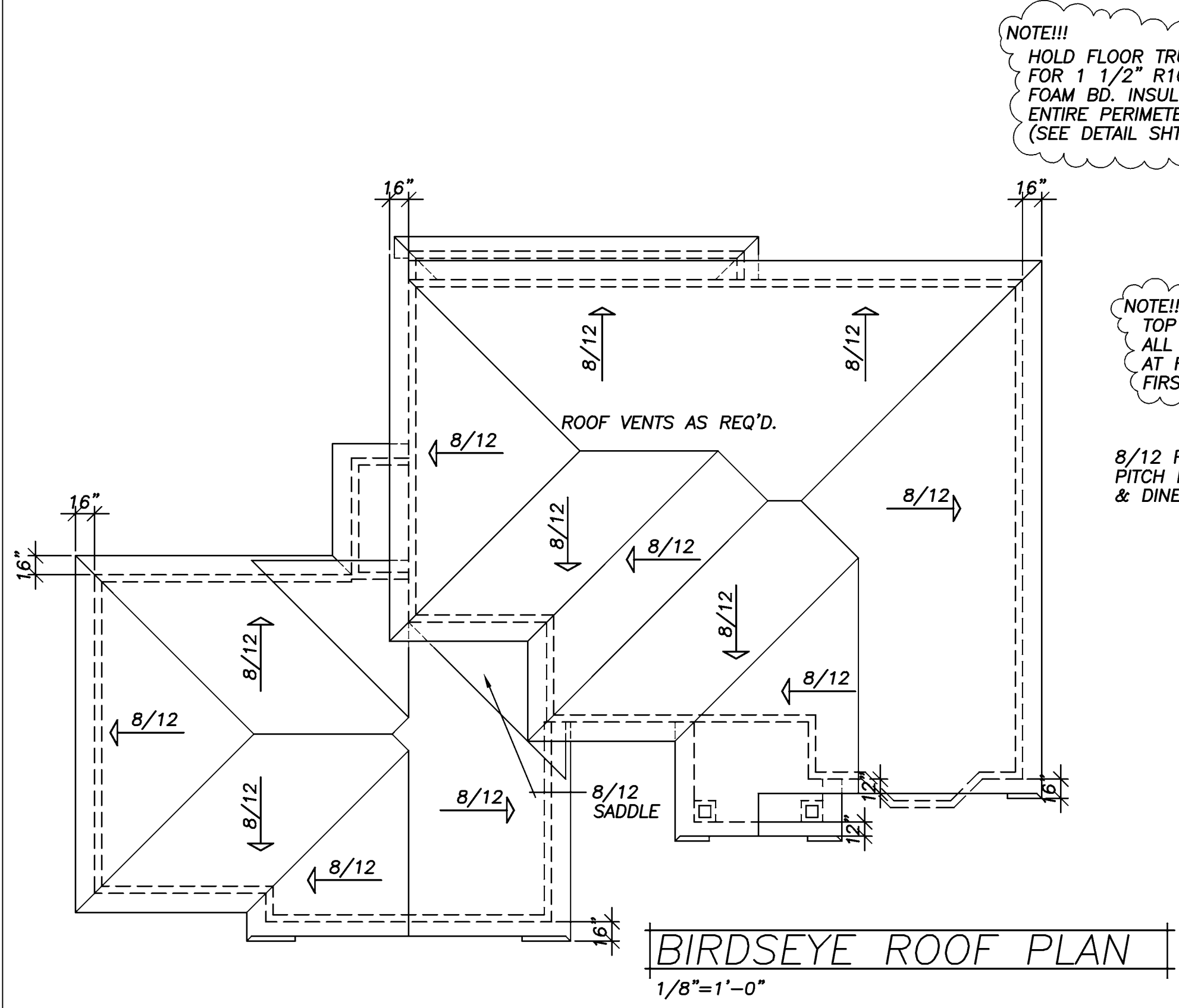
RIGHT ELEVATION 1/8"=1'-0"



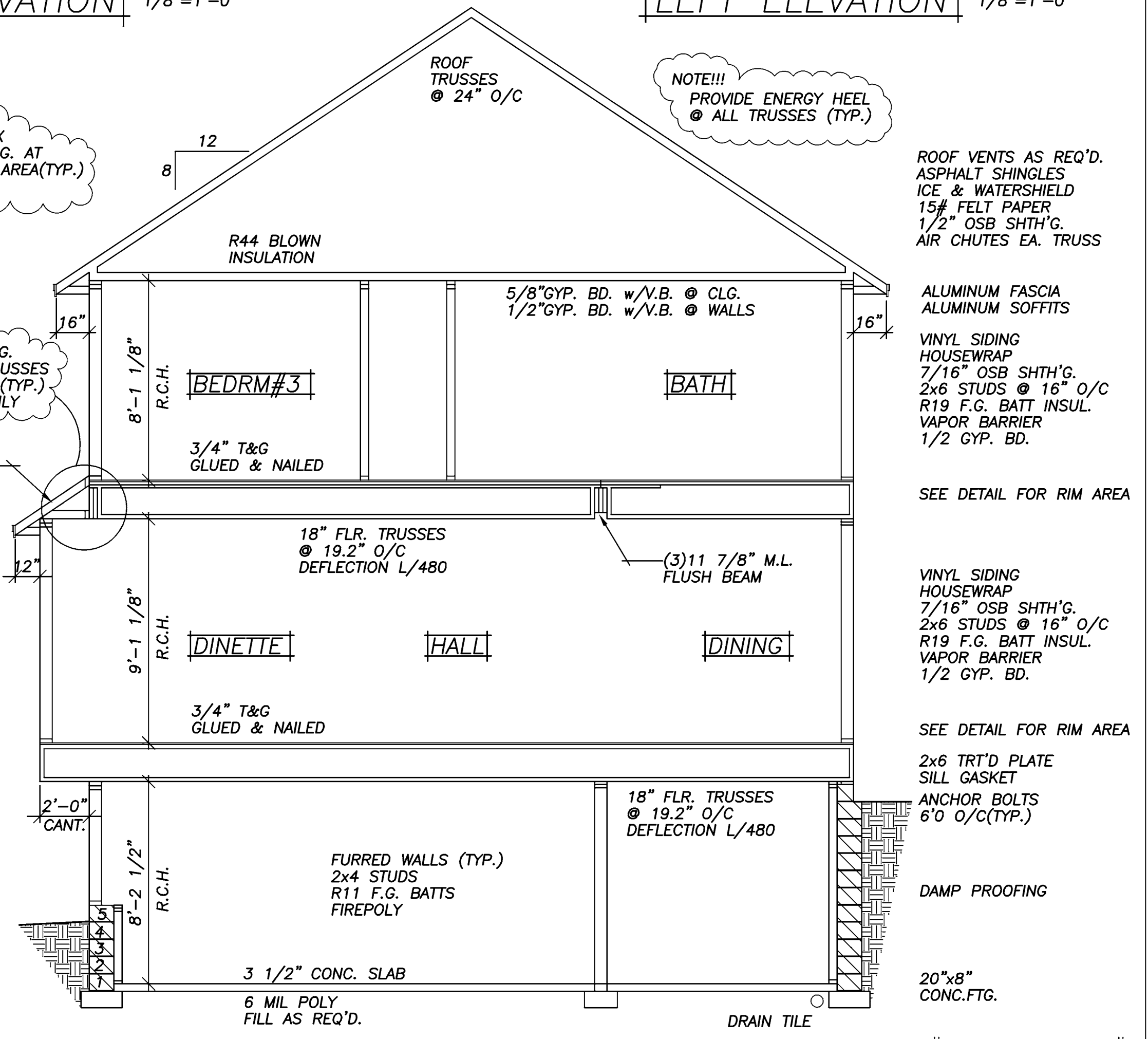
REAR ELEVATION 1/8"=1'-0"



LEFT ELEVATION 1/8"=1'-0"



BIRDSEYE ROOF PLAN 1/8"=1'-0"



CROSS SECTION 1/4"=1'-0"

ALL HEIGHT CALCULATIONS FOR FOUNDATIONS ARE BASED ON THE USE OF FULL 8" HIGH BLOCK w/ 3/8" JOINTS. IF MODULAR BLOCK IS USED, CONTRACTORS SHOULD ADJUST HEIGHTS ACCORDINGLY.