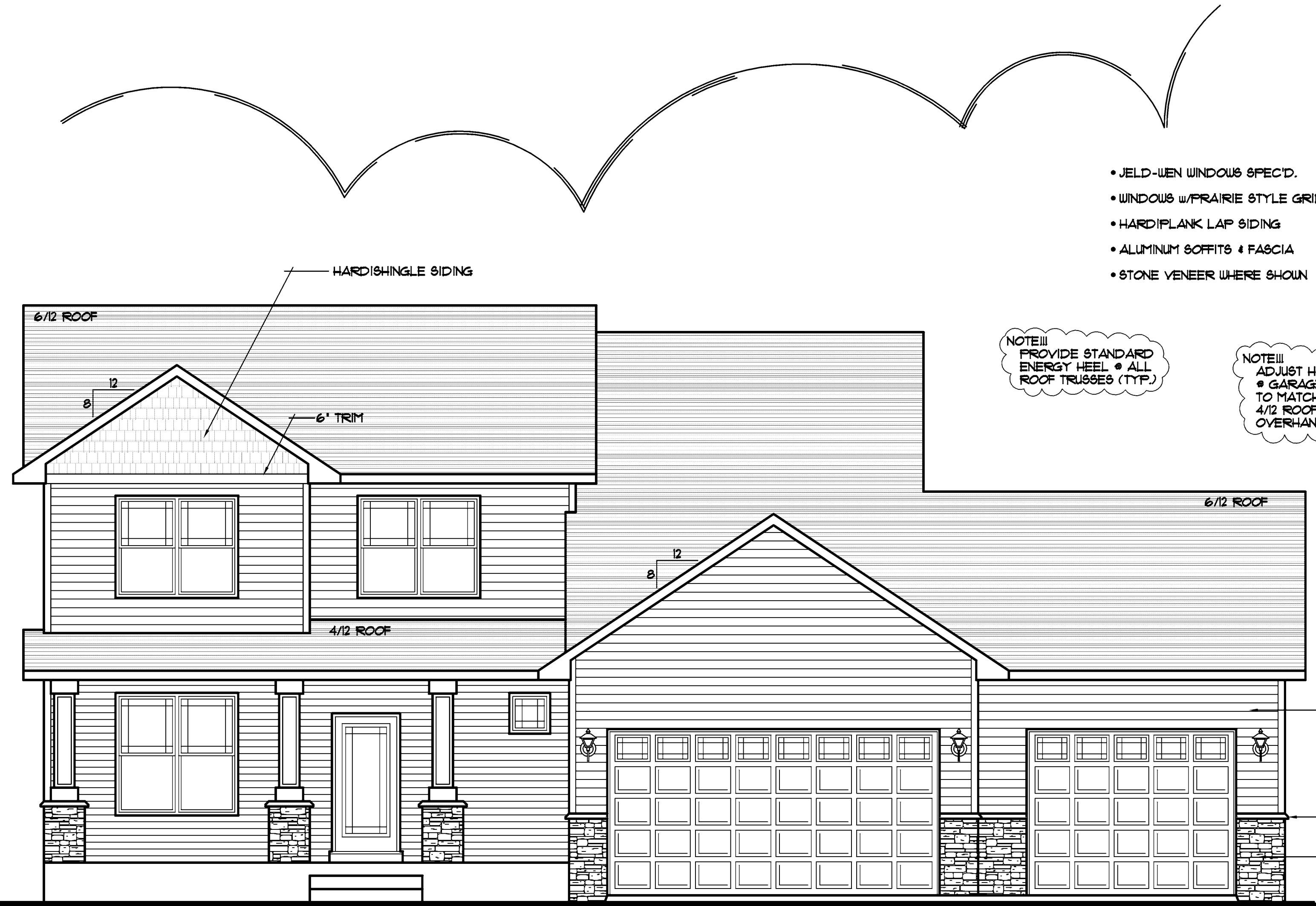


REVISIONS	BY
XXXXX	XX

**SPECIAL NOTICE:**  
CROIX DESIGN AND DRAFTING, INC. ACCEPTS NO RESPONSIBILITY FOR ERRORS AND/OR OMISSIONS. THESE DRAWINGS ARE DESIGN CONCEPT ONLY. EVERY EFFORT HAS BEEN MADE DESIGNING TO MEET THE INTENT OF THE CLIENT'S REQUIREMENTS. THE CONTRACTOR SHALL VERIFY ALL DIMENSIONS AND CONDITIONS ON THE JOB. THE CONTRACTOR SHALL BE RESPONSIBLE FOR ANY CHANGES OR ADJUSTMENTS REQUIRED DURING ACTUAL CONSTRUCTION. NO REPRESENTATION IS MADE OR IMPLIED FOR ACCURACY.

**© COPYRIGHT NOTICE, ALL RIGHTS RESERVED**  
THESE ARCHITECTURAL PLANS AND ALL RELATED WORKS ARE PROTECTED BY UNITED STATES COPYRIGHT LAWS, AND MAY NOT BE REPRODUCED, COPIED, OR TRANSMITTED IN ANY MANNER WITHOUT THE EXPRESS WRITTEN PERMISSION OF CROIX DESIGN AND DRAFTING, INC. CROIX DESIGN AND DRAFTING, INC.

- JELD-WEN WINDOWS SPEC'D.
- WINDOWS w/PRAIRIE STYLE GRIDS WHERE SHOWN
- HARDIPLANK LAP SIDING
- ALUMINUM SOFFITS & FASCIA
- STONE VENEER WHERE SHOWN



NOTE!!!  
PROVIDE STANDARD ENERGY HEEL @ ALL ROOF TRUSSES (TYP.)

NOTE!!!  
ADJUST HEEL HEIGHT @ GARAGE ROOF TRUSSES TO MATCH FASCIA WITH 4/12 ROOF TRUSSES w/18' OVERHANG (TYP.)

- HARDIPLANK LAP SIDING
- STONE CAP
- STONE VENEER

16'0x8'0 METAL RAISED PANEL GARAGE DOOR w/WINDOWS

10'0x8'0 METAL RAISED PANEL GARAGE DOOR w/WINDOWS

**FRONT ELEVATION** 1/4"=1'-0"  
1132 SQ. FT. FIRST FLOOR  
1158 SQ. FT. SECOND FLOOR  
2290 SQ. FT. TOTAL

THE:  
**MACKIN/REINSBERG RESIDENCE**

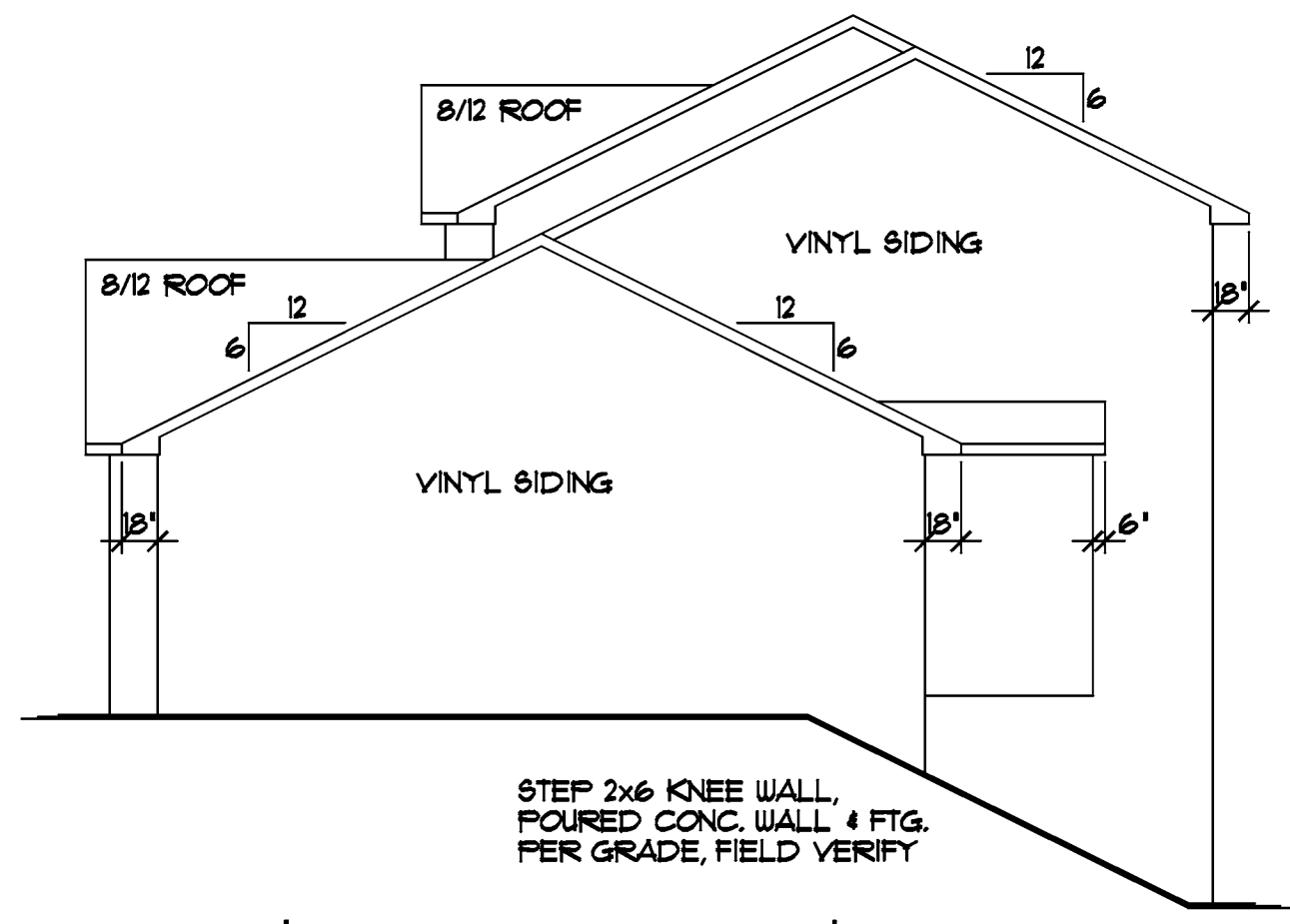
© COPYRIGHT 2013 NOTICE, ALL RIGHTS RESERVED  
CROIX DESIGN AND DRAFTING, INC.

DESIGN AND DRAFTING BY:  
**CROIX DESIGN and DRAFTING, Inc.**

• ARCHITECTURAL DESIGN and DRAFTING SERVICE •  
• HOME PLAN SERVICE • CUSTOM HOMES • REMODELING •  
• PH: (763) 757-5997 • FAX: (763) 757-4383 •  
• WWW.CROIXDESIGN.COM •

BUILT BY:  
**ELEVATE BUILDERS, LLC**  
P.O. BOX 114  
FOREST LAKE, MN 55025

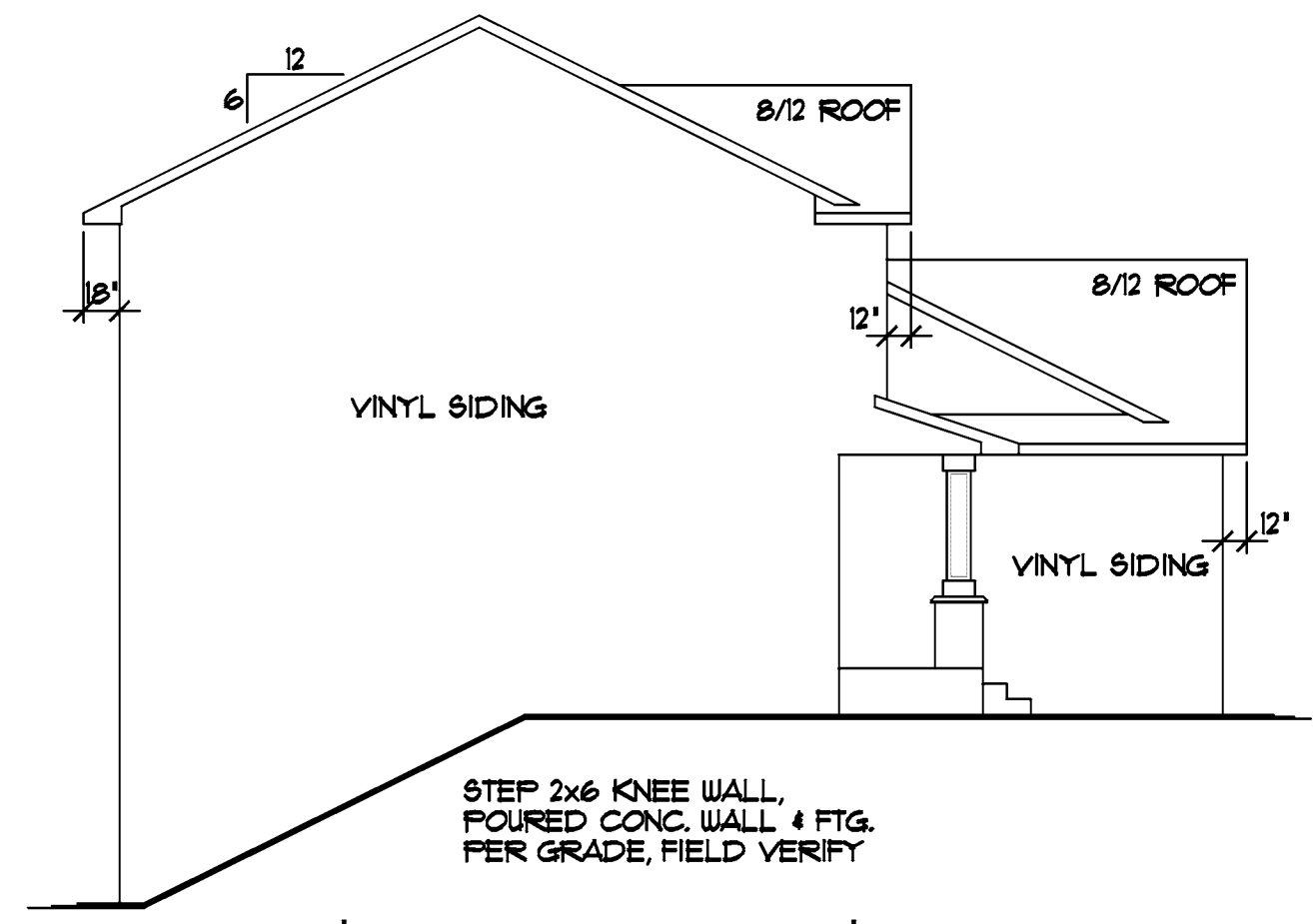
DRAWN	XX
CHECKED	XX
DATE	12/23/2013
SCALE	AS NOTED
CADD FILE #	13112



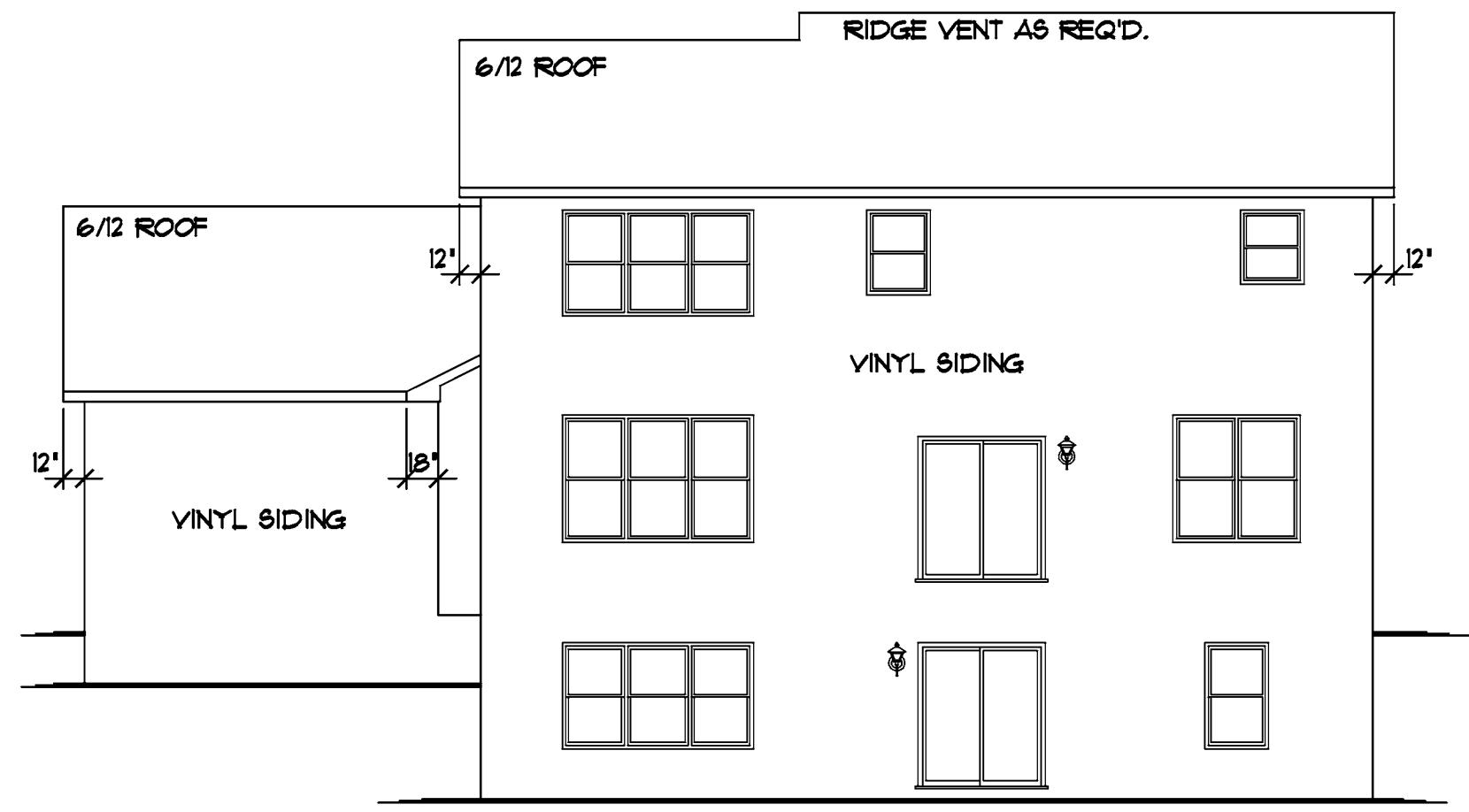
**RIGHT ELEVATION** 1/8"=1'-0"

NOTE!!!  
PROVIDE STANDARD  
ENERGY HEEL @ ALL  
ROOF TRUSSES (TYP.)

NOTE!!!  
ADJUST HEEL HEIGHT  
@ GARAGE ROOF TRUSSES  
TO MATCH FASCIA WITH  
4/12 ROOF TRUSSES w/18'  
OVERHANG (TYP.)



**LEFT ELEVATION** 1/8"=1'-0"



**REAR ELEVATION** 1/8"=1'-0"

REVISIONS
XXXXXXXX 0000 BY:XX
XXXXXXXX 0000 BY:XX

**SPECIAL NOTICE:**  
CROIX DESIGN AND DRAFTING, INC. ACCEPTS NO RESPONSIBILITY FOR ERRORS AND/OR OMISSIONS. THESE DRAWINGS ARE DESIGN CONCEPT ONLY. EVERY EFFORT HAS BEEN MADE TO PREPARE THESE DRAWINGS ACCURATELY. HOWEVER, THE USER SHALL BE RESPONSIBLE FOR VERIFYING ALL DIMENSIONS AND CONDITIONS BEFORE CONSTRUCTION. ANY CHANGES OR ADJUSTMENTS REQUIRED DURING CONSTRUCTION AND BE RESPONSIBLE FOR ANY CHANGES OR ADJUSTMENTS REQUIRED DURING ACTUAL CONSTRUCTION. NO REPRESENTATION IS MADE OR IMPLIED FOR ACCURACY.

**CROIX DESIGN and DRAFTING, Inc.**  
•PH: (763) 757-5997 FAX: (763) 757-4383 ANDOVER, MINNESOTA

BUILT BY:  
**ELEVATE BUILDERS, LLC**

SHEET  
**2**  
OF 6  
CADD FILE #  
13112

REVISIONS
XXXXXX
0000
BY:XX
XXXXXX
0000
BY:XX

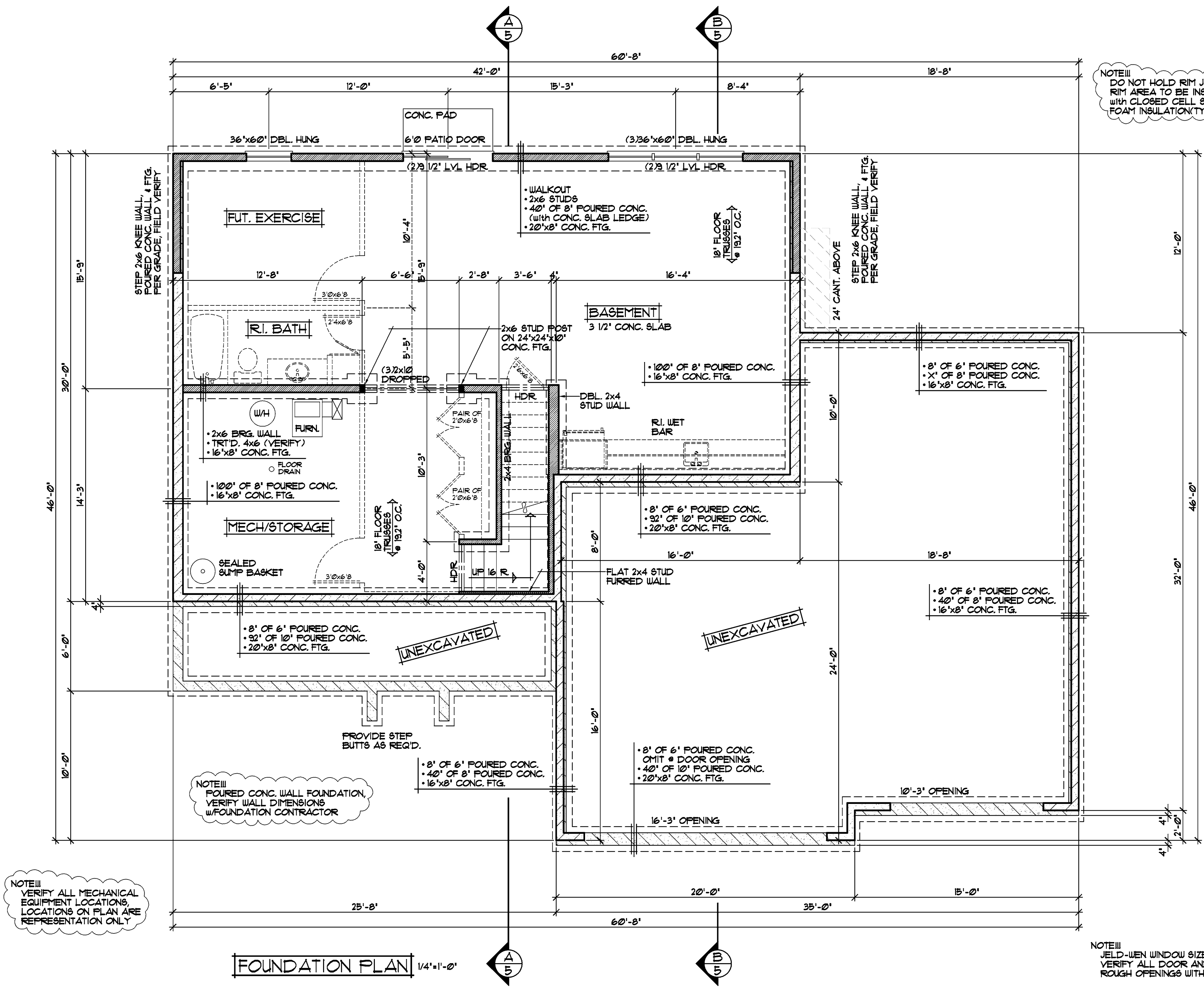
NOTE III  
DO NOT HOLD RIM JOIST IN RIM AREA TO BE INSULATED WITH CLOSED CELL SPRAYED FOAM INSULATION (TYP.)

SPECIAL NOTICE:  
CROIX DESIGN AND DRAFTING, INC. ACCEPTS NO RESPONSIBILITY FOR ERRORS AND/OR OMISSIONS IN THESE DRAWINGS. EVERY EFFORT HAS BEEN MADE TO PREPARE THESE DRAWINGS ACCURATELY. HOWEVER, THE USER SHALL BE RESPONSIBLE FOR VERIFYING ALL DIMENSIONS AND CONDITIONS IN THE FIELD. THE USER SHALL BE RESPONSIBLE FOR ANY CHANGES OR ADJUSTMENTS REQUIRED DURING CONSTRUCTION. NO REPRESENTATION IS MADE OR IMPLIED FOR ACCURACY.

CROIX DESIGN and DRAFTING, Inc.  
PH: (763) 757-5997 FAX: (763) 757-4383 ANDOVER, MINNESOTA

BUILT BY:  
ELEVATE BUILDERS, LLC

SHEET  
3  
of 6  
CADD FILE #  
13112



NOTE III  
VERIFY ALL MECHANICAL EQUIPMENT LOCATIONS, LOCATIONS ON PLAN ARE REPRESENTATION ONLY

NOTE III  
POURED CONC. WALL FOUNDATION, VERIFY WALL DIMENSIONS W/ FOUNDATION CONTRACTOR

• 8" OF 6" POURED CONC.  
• 40' OF 8" POURED CONC.  
• 16'x8" CONC. FTG.

• 8" OF 6" POURED CONC. OMIT @ DOOR OPENING  
• 40' OF 8" POURED CONC.  
• 20'x8" CONC. FTG.

• 8" OF 6" POURED CONC.  
• 40' OF 8" POURED CONC.  
• 16'x8" CONC. FTG.

• 8" OF 6" POURED CONC.  
• 32' OF 10" POURED CONC.  
• 20'x8" CONC. FTG.

• 100' OF 8" POURED CONC.  
• 16'x8" CONC. FTG.

• 8" OF 6" POURED CONC.  
• 1' OF 8" POURED CONC.  
• 16'x8" CONC. FTG.

• WALKOUT  
• 2x6 STUDS  
• 40' OF 8" POURED CONC. (WITH CONC. SLAB LEDGE)  
• 20'x8" CONC. FTG.

STEP 2x6 KNEE WALL, POURED CONC. WALL, & FTG. PER GRADE, FIELD VERIFY

STEP 2x6 KNEE WALL, POURED CONC. WALL, & FTG. PER GRADE, FIELD VERIFY

FOUNDATION PLAN 1/4"=1'-0"

NOTE III  
JELD-WEN WINDOW SIZES SPEC'D. VERIFY ALL DOOR AND WINDOW ROUGH OPENINGS WITH SUPPLIER

PLAN REVISED 12-23-2013 NF.

REVISIONS
XXXXXX 0000 BY:XX
XXXXXX 0000 BY:XX

**SPECIAL NOTICE:**  
CROIX DESIGN AND DRAFTING, INC. ACCEPTS NO RESPONSIBILITY FOR ERRORS AND/OR OMISSIONS IN THESE DRAWINGS. A DESIGN CONCEPT ONLY. EVERY EFFORT HAS BEEN MADE TO PREPARE THESE DRAWINGS ACCURATELY. HOWEVER, THE USER SHALL BE RESPONSIBLE FOR VERIFYING ALL DIMENSIONS AND CONDITIONS IN THE FIELD. THE USER SHALL BE RESPONSIBLE FOR OBTAINING ALL NECESSARY PERMITS AND APPROVALS. THE USER SHALL BE RESPONSIBLE FOR ANY CHANGES OR ADJUSTMENTS REQUIRED DURING CONSTRUCTION. NO REPRESENTATION IS MADE OR IMPLIED FOR ACCURACY.

**CROIX DESIGN and DRAFTING, Inc.**  
• PH: (763) 757-5997 FAX: (763) 757-4383 ANDOVER, MINNESOTA

**ELEVATE BUILDERS, LLC**  
BUILT BY:

SHEET  
**4**  
of 6  
CADD FILE #  
13112

NOTE III  
15" DEEP UPPER CABINETS • KITCH.

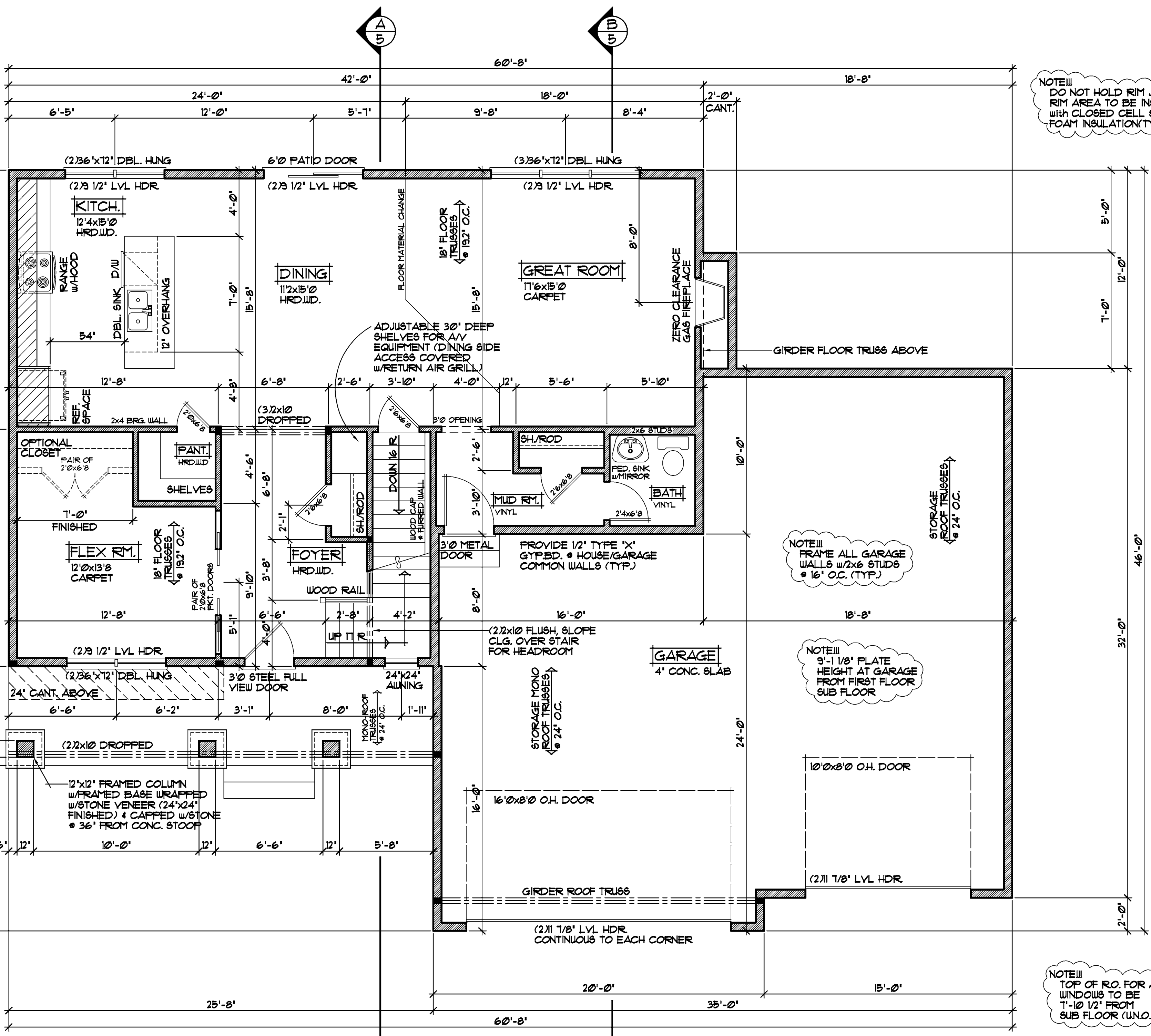
NOTE III  
DO NOT HOLD RIM JOIST IN RIM AREA TO BE INSULATED WITH CLOSED CELL SPRAYED FOAM INSULATION (TYP.)

NOTE III  
FRAME ALL GARAGE WALLS w/2x6 STUDS @ 16" O.C. (TYP.)

NOTE III  
9'-1 1/8" PLATE HEIGHT AT GARAGE FROM FIRST FLOOR SUB FLOOR

NOTE III  
TOP OF R.O. FOR ALL WINDOWS TO BE 7'-10 1/2" FROM SUB FLOOR (U.N.O.)

NOTE III  
JELD-WEN WINDOW SIZES SPEC'D. VERIFY ALL DOOR AND WINDOW ROUGH OPENINGS WITH SUPPLIER



**FIRST FLOOR PLAN** 1/4"=1'-0"  
1132 SQ.FT.

NOTE III  
9'-1 1/8" PLATE HEIGHT • ENTIRE FIRST FLOOR (TYP.)



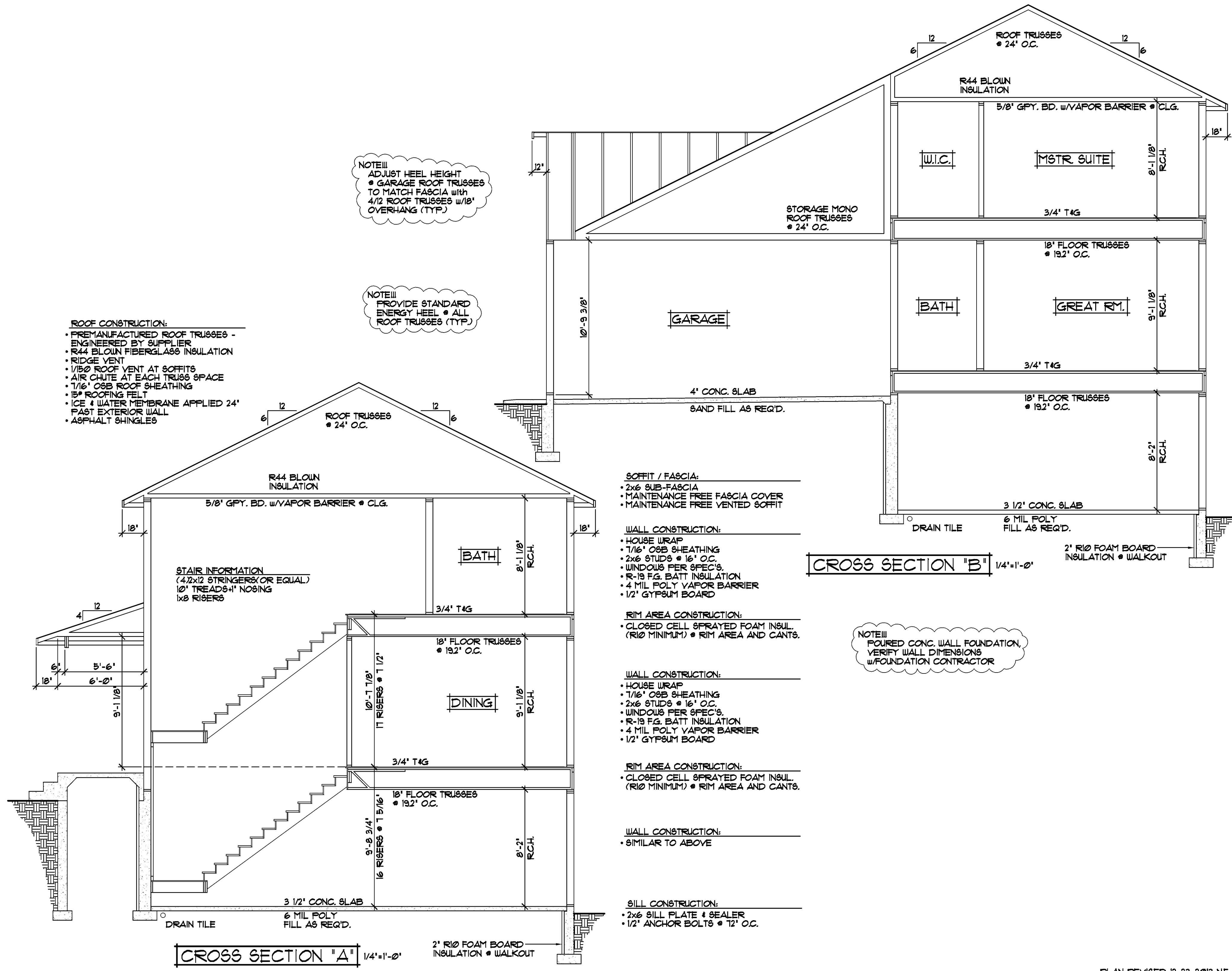
REVISIONS	
XXXXXX	0000
BY:XX	
XXXXXX	0000
BY:XX	

**SPECIAL NOTICE:**  
CROIX DESIGN AND DRAFTING, INC. ACCEPTS NO RESPONSIBILITY FOR ERRORS AND/OR OMISSIONS IN THESE DRAWINGS. A DESIGN CONCEPT ONLY. EVERY EFFORT HAS BEEN MADE TO PREPARE THESE DRAWINGS ACCURATELY. HOWEVER, THE USER SHALL BE RESPONSIBLE FOR VERIFYING ALL DIMENSIONS AND CONDITIONS AND BE RESPONSIBLE FOR ANY CHANGES OR ADJUSTMENTS REQUIRED DURING CONSTRUCTION. NO REPRESENTATION IS MADE OR IMPLIED FOR ACCURACY.

**CROIX DESIGN and DRAFTING, Inc.**  
• PH: (763) 757-5997 FAX: (763) 757-4383 ANDOVER, MINNESOTA

**ELEVATE BUILDERS, LLC**  
BUILT BY:

SHEET  
6  
of 6  
CADD FILE #  
13112



- ROOF CONSTRUCTION:**
- PREMANUFACTURED ROOF TRUSSES - ENGINEERED BY SUPPLIER
  - R44 BLOWN FIBERGLASS INSULATION
  - RIDGE VENT
  - 1/8" ROOF VENT AT SOFFITS
  - AIR CHUTE AT EACH TRUSS SPACE
  - 7/16" OSB ROOF SHEATHING
  - 15# ROOFING FELT
  - ICE & WATER MEMBRANE APPLIED 24" PAST EXTERIOR WALL
  - ASPHALT SHINGLES

**NOTE III**  
ADJUST HEEL HEIGHT  
• GARAGE ROOF TRUSSES TO MATCH FASCIA WITH 4/12 ROOF TRUSSES w/18' OVERHANG (TYP.)

**NOTE III**  
PROVIDE STANDARD ENERGY HEEL • ALL ROOF TRUSSES (TYP.)

- SOFFIT / FASCIA:**
- 2x6 SUB-FASCIA
  - MAINTENANCE FREE FASCIA COVER
  - MAINTENANCE FREE VENTED SOFFIT

- WALL CONSTRUCTION:**
- HOUSE WRAP
  - 7/16" OSB SHEATHING
  - 2x6 STUDS • 16" O.C.
  - WINDOWS PER SPEC'S.
  - R-19 FG. BATT INSULATION
  - 4 MIL POLY VAPOR BARRIER
  - 1/2" GYPSUM BOARD

- RIM AREA CONSTRUCTION:**
- CLOSED CELL SPRAYED FOAM INSUL. (R10 MINIMUM) • RIM AREA AND CANTS.

- WALL CONSTRUCTION:**
- HOUSE WRAP
  - 7/16" OSB SHEATHING
  - 2x6 STUDS • 16" O.C.
  - WINDOWS PER SPEC'S.
  - R-19 FG. BATT INSULATION
  - 4 MIL POLY VAPOR BARRIER
  - 1/2" GYPSUM BOARD

- RIM AREA CONSTRUCTION:**
- CLOSED CELL SPRAYED FOAM INSUL. (R10 MINIMUM) • RIM AREA AND CANTS.

- WALL CONSTRUCTION:**
- SIMILAR TO ABOVE

- SILL CONSTRUCTION:**
- 2x6 SILL PLATE & SEALER
  - 1/2" ANCHOR BOLTS • T2" O.C.

**NOTE III**  
POURED CONC. WALL FOUNDATION, VERIFY WALL DIMENSIONS w/FOUNDATION CONTRACTOR