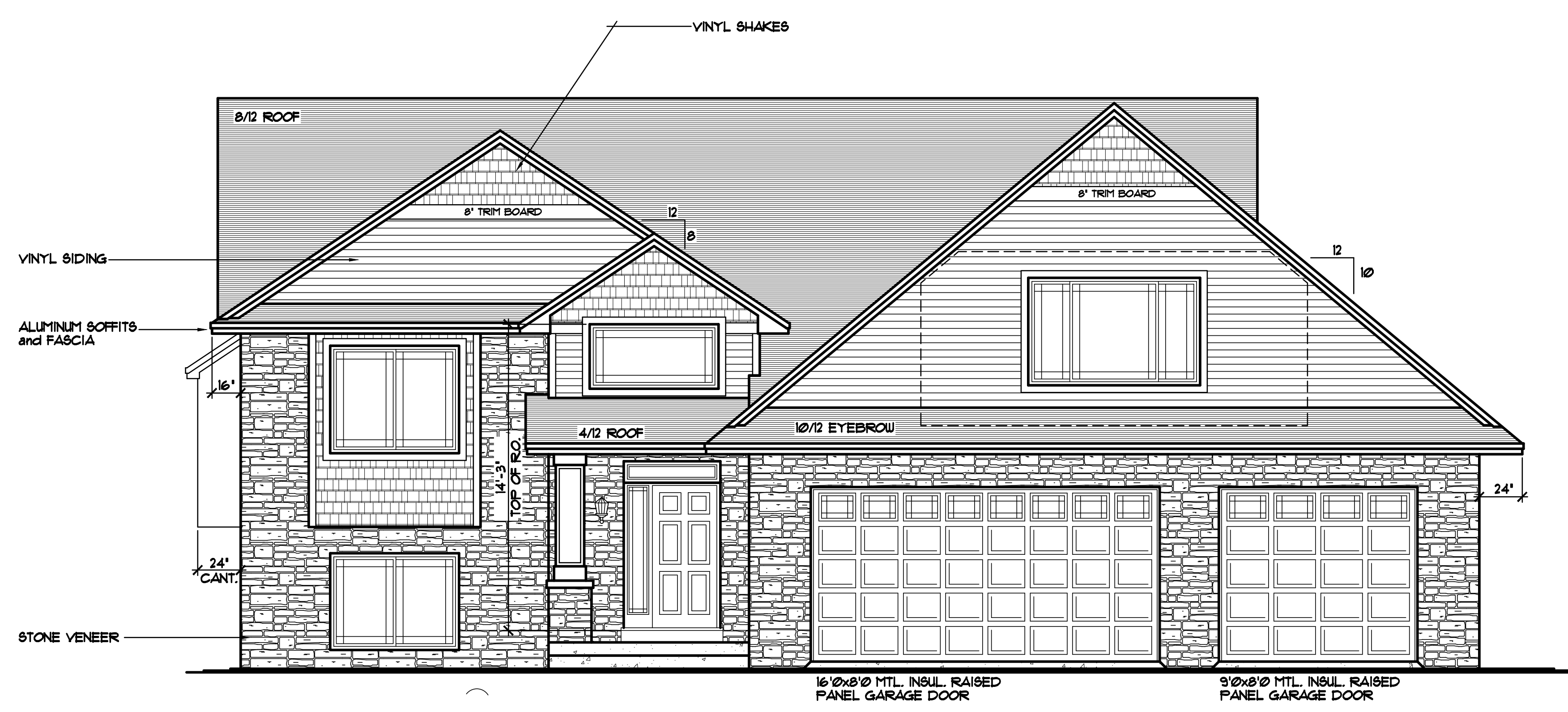


REVISIONS	BY
06374	J.M.
06377	J.M.
07007	J.M.
14162	J.C.
14169	J.C.

**SPECIAL NOTICE:**  
 CROIX DESIGN AND DRAFTING, INC. ACCEPTS NO RESPONSIBILITY FOR ERRORS AND/OR OMISSIONS. THESE DRAWINGS ARE DESIGN CONCEPT ONLY. EVERY EFFORT HAS BEEN MADE TO DESIGN ACCURATELY. THE OWNER, GENERAL CONTRACTOR, SUB-CONTRACTORS, AND SUPPLIERS MUST CHECK ALL DETAILS AND DIMENSIONS AND BE RESPONSIBLE FOR ANY CHANGES OR ADJUSTMENTS REQUIRED DURING ACTUAL CONSTRUCTION. NO REPRESENTATION IS MADE OR IMPLIED FOR ACCURACY.

**COPYRIGHT NOTICE, ALL RIGHTS RESERVED**  
 THESE ARCHITECTURAL PLANS AND ALL RELATED WORKS ARE PROTECTED BY UNITED STATES COPYRIGHT LAWS, AND THAT NOT BE REPRODUCED, COPIED, OR TRANSMITTED IN ANY MANNER WITHOUT THE EXPRESS WRITTEN PERMISSION OF CROIX DESIGN AND DRAFTING, INC. CROIX DESIGN AND DRAFTING, INC.



**FRONT ELEVATION** 1/4" = 1'-0"  
 1344 SQ. FT. MAIN LEVELS  
 453 SQ. FT. BONUS ROOM MASTER SUITE  
 210 SQ. FT. 4 SEASON PORCH  
 2007 SQ. FT. TOTAL FINISHED AREA

THE:  
**MIRE RESIDENCE**  
 8685 COLE COURT  
 LOT 4, BLOCK 1  
 INVER GROVE HEIGHTS, MN

REVISED RB. 5/15/2018

© COPYRIGHT 2006-2018 NOTICE, ALL RIGHTS RESERVED  
 CROIX DESIGN AND DRAFTING, INC.

DESIGN and DRAFTING BY:

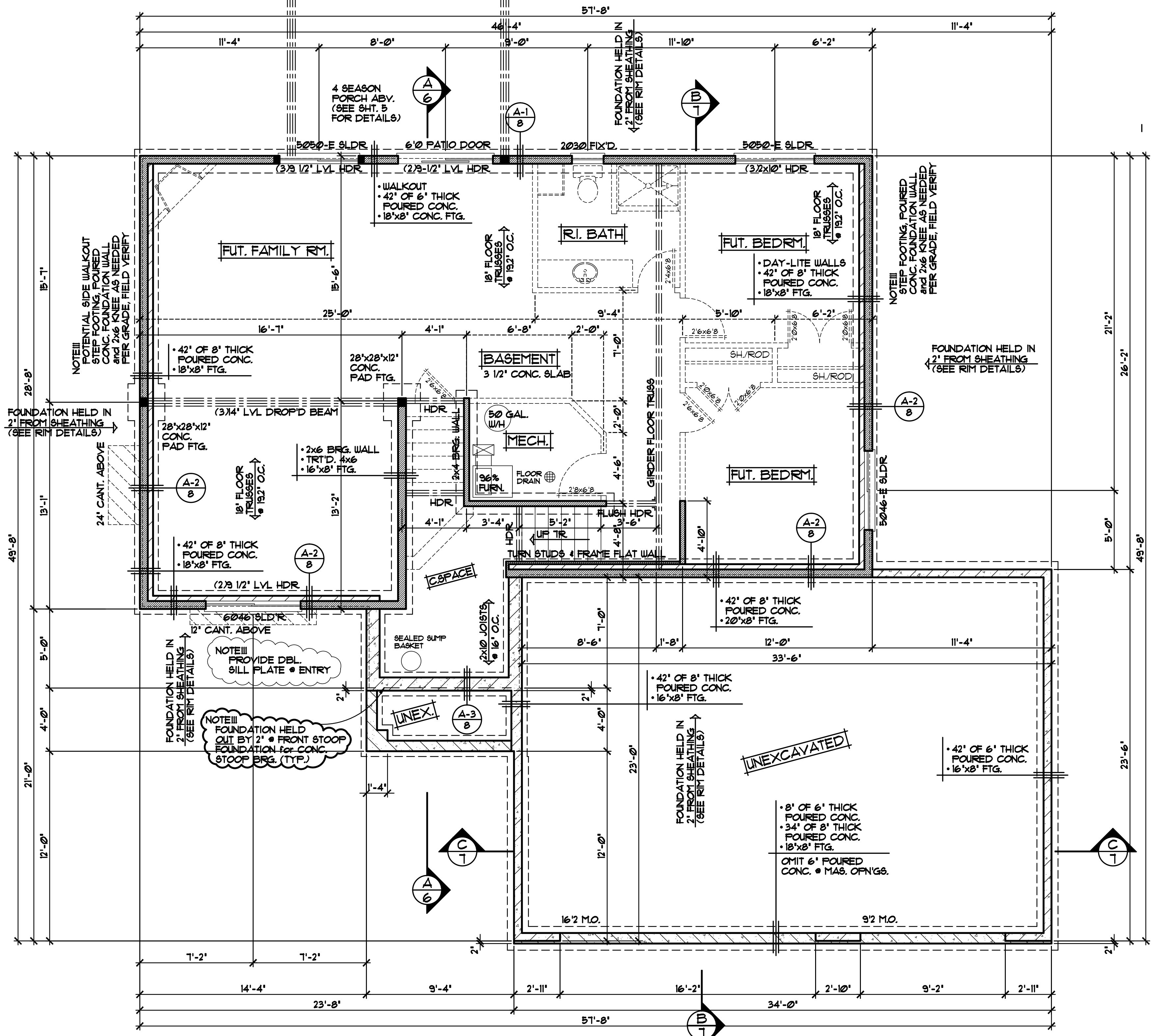


ARCHITECTURAL DESIGN and DRAFTING SERVICE •  
 HOME PLAN SERVICE • CUSTOM HOMES • REMODELING •  
 PHONE: 763.757.5997 • ANDOVER, MINNESOTA •  
 WWW.CROIXDESIGN.COM •

BUILT BY:

**ELEVATE BUILDERS, LLC**  
 P.O. BOX 114  
 FOREST LAKE, MN 55025

DRAWN	TR
CHECKED	XX
DATE	05/10/2018
SCALE	AS NOTED
CADD FILE #	18052
SHEET	1 OF 8



**FOUNDATION PLAN** 1/4" = 1'-0"  
UNFINISHED BASEMENT

REVISIONS
XXXXXXXX
00000
BY:XX
XXXXXXXX
00000
BY:XX

**SPECIAL NOTICE:**  
CROIX DESIGN AND DRAFTING, INC. ACCEPTS NO RESPONSIBILITY FOR ERRORS AND/OR OMISSIONS. THESE DRAWINGS ARE DESIGN CONCEPT ONLY. EVERY EFFORT HAS BEEN MADE TO PREVENT ERRORS, BUT THE USER MUST VERIFY ALL DIMENSIONS AND CONDITIONS IN THE FIELD. THE USER SHALL BE RESPONSIBLE FOR ANY CHANGES OR ADJUSTMENTS REQUIRED DURING CONSTRUCTION. NO REPRESENTATION IS MADE OR IMPLIED FOR ACCURACY.

OFFICE: 763.757.5987  
FAX: 763.757.4383  
ANDOVER, MINNESOTA  
WWW.CROIXDESIGN.COM



BUILT BY:  
**ELEVATE BUILDERS, LLC**

SHEET  
**3**  
OF 8  
CADD FILE #  
18052

REVISIONS	
XXXXXX	BY:XX
0000	BY:XX
XXXXXX	BY:XX
0000	BY:XX

**SPECIAL NOTICE:**  
 CROIX DESIGN AND DRAFTING, INC. ACCEPTS NO RESPONSIBILITY FOR ERRORS AND/OR OMISSIONS. THESE DRAWINGS ARE DESIGN CONCEPT ONLY. EVERY EFFORT HAS BEEN MADE TO PREPARE THESE DRAWINGS TO THE BEST OF OUR KNOWLEDGE AND BELIEF. HOWEVER, THE CLIENT SHALL BE RESPONSIBLE FOR VERIFYING ALL DIMENSIONS AND MATERIALS BEFORE CONSTRUCTION. CROIX DESIGN AND DRAFTING, INC. SHALL NOT BE RESPONSIBLE FOR ANY CHANGES OR ADJUSTMENTS REQUIRED DURING CONSTRUCTION. NO REPRESENTATION IS MADE OR IMPLIED FOR ACCURACY.

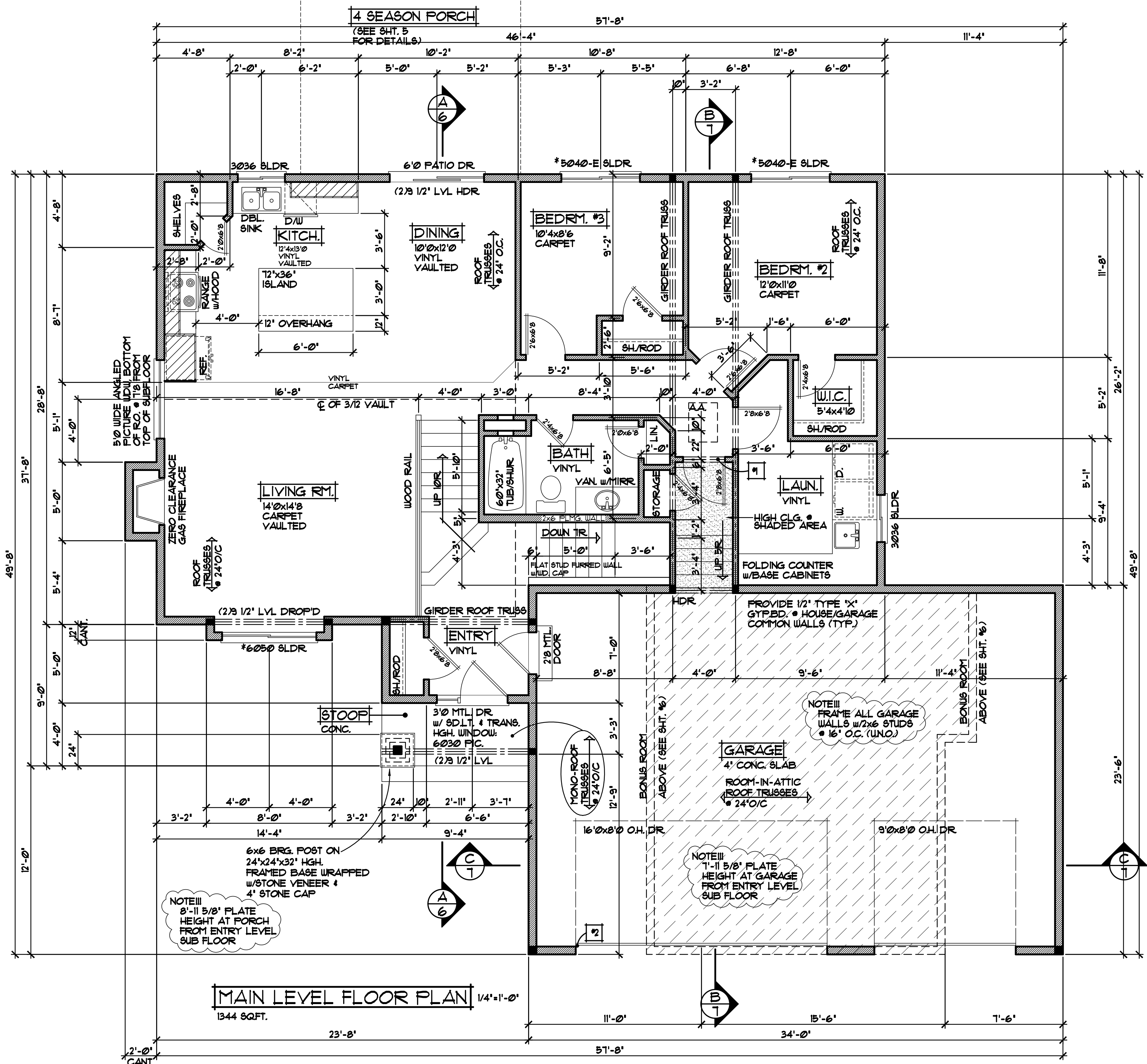
OFFICE: 763.757.5997  
 FAX: 763.757.4383  
 ANDOVER, MINNESOTA  
 WWW.CROIXDESIGN.COM



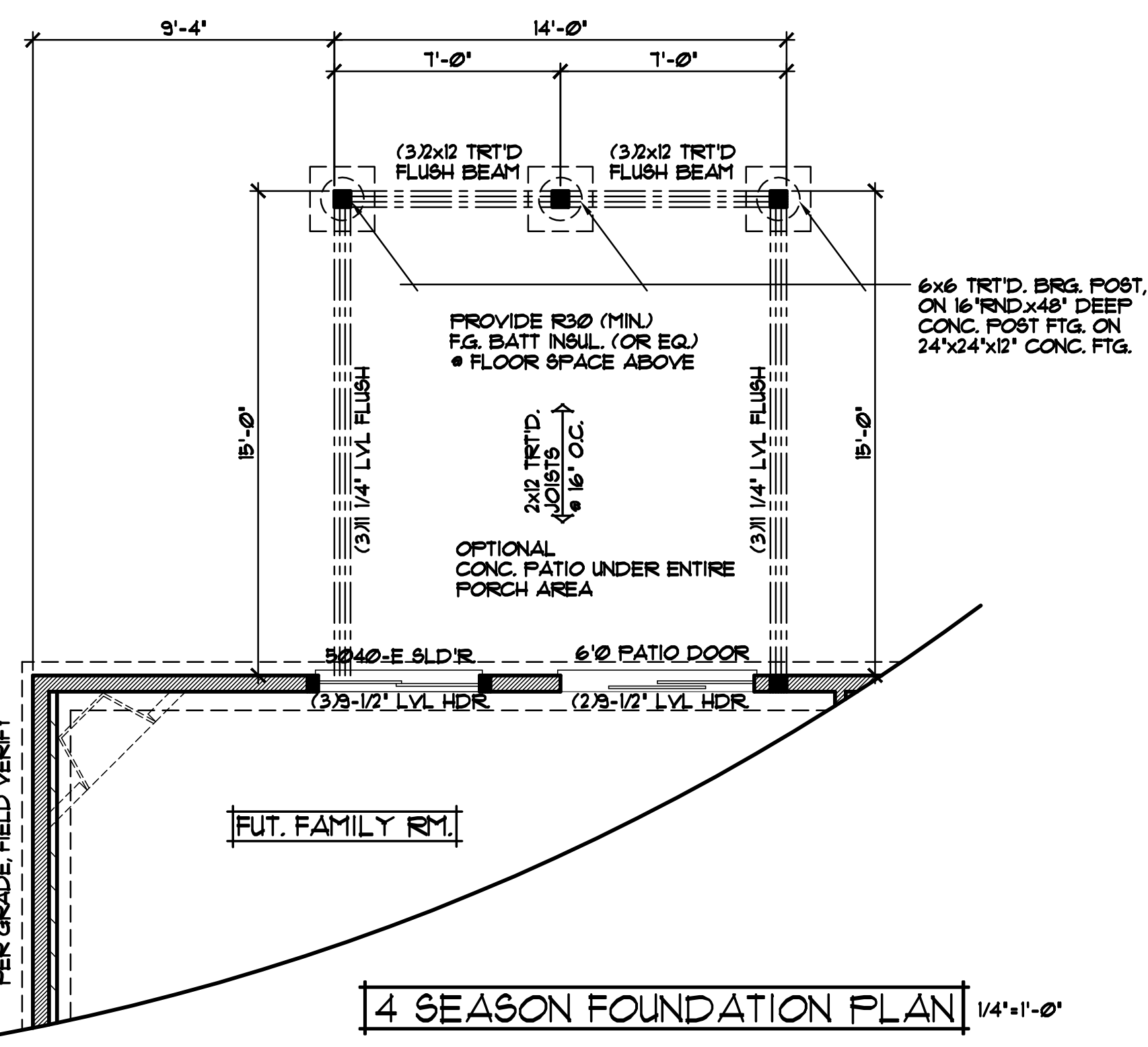
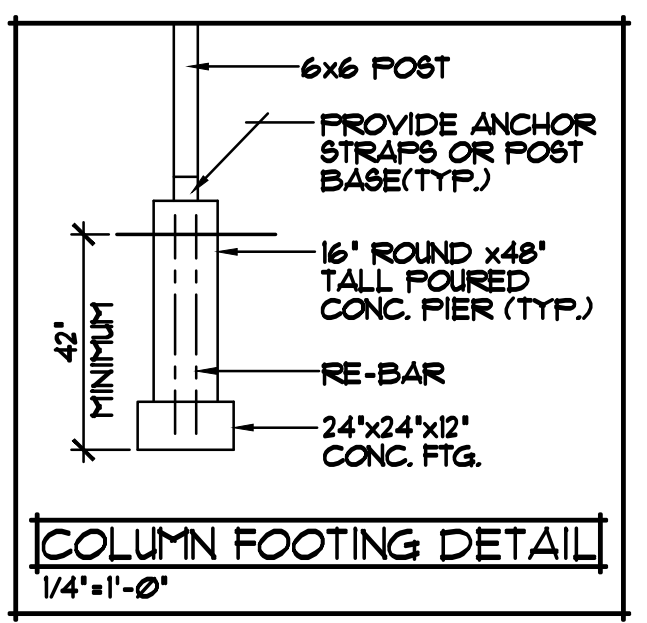
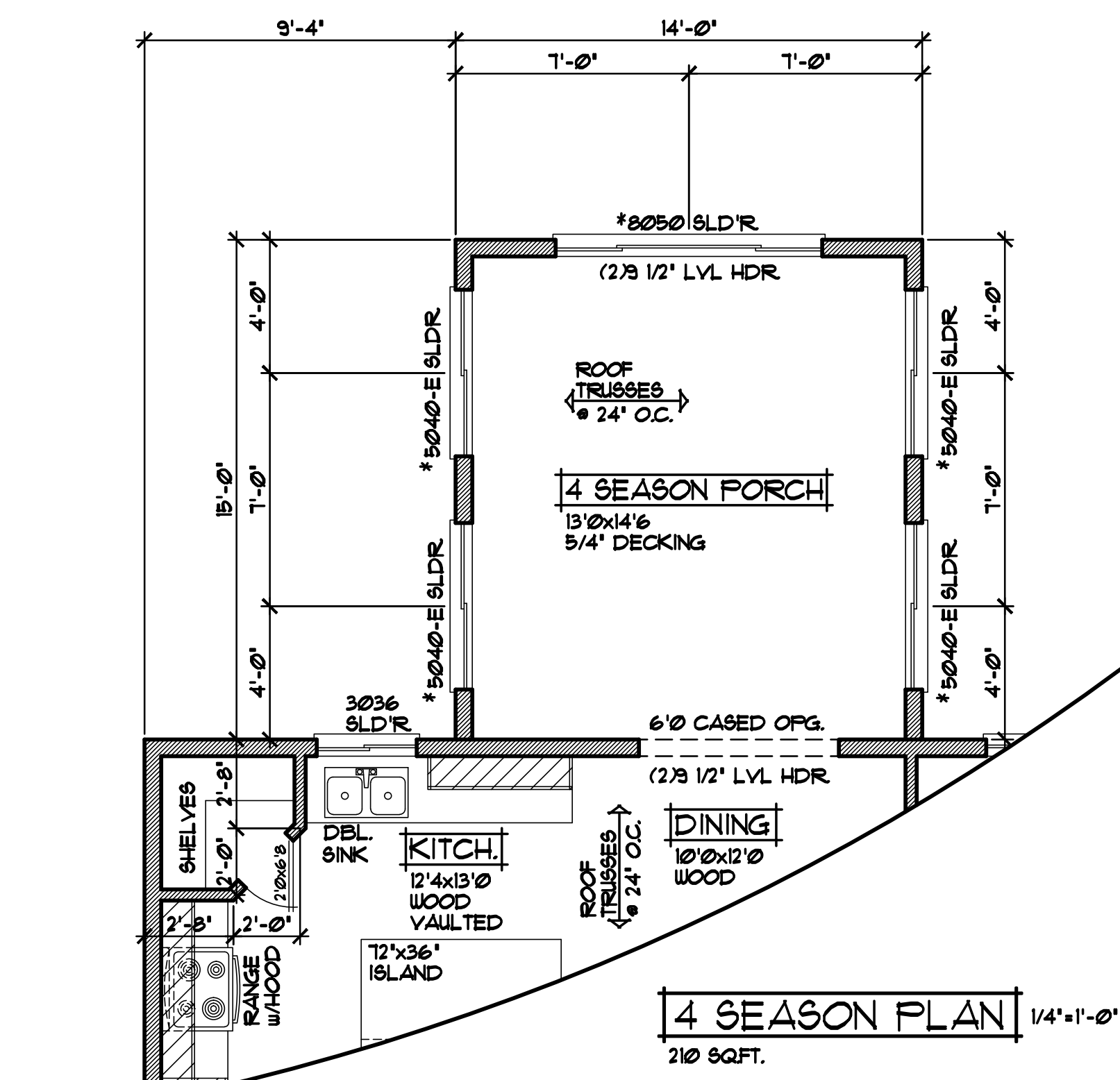
BUILT BY:  
**ELEVATE BUILDERS, LLC**

SHEET  
**4**  
 OF 8

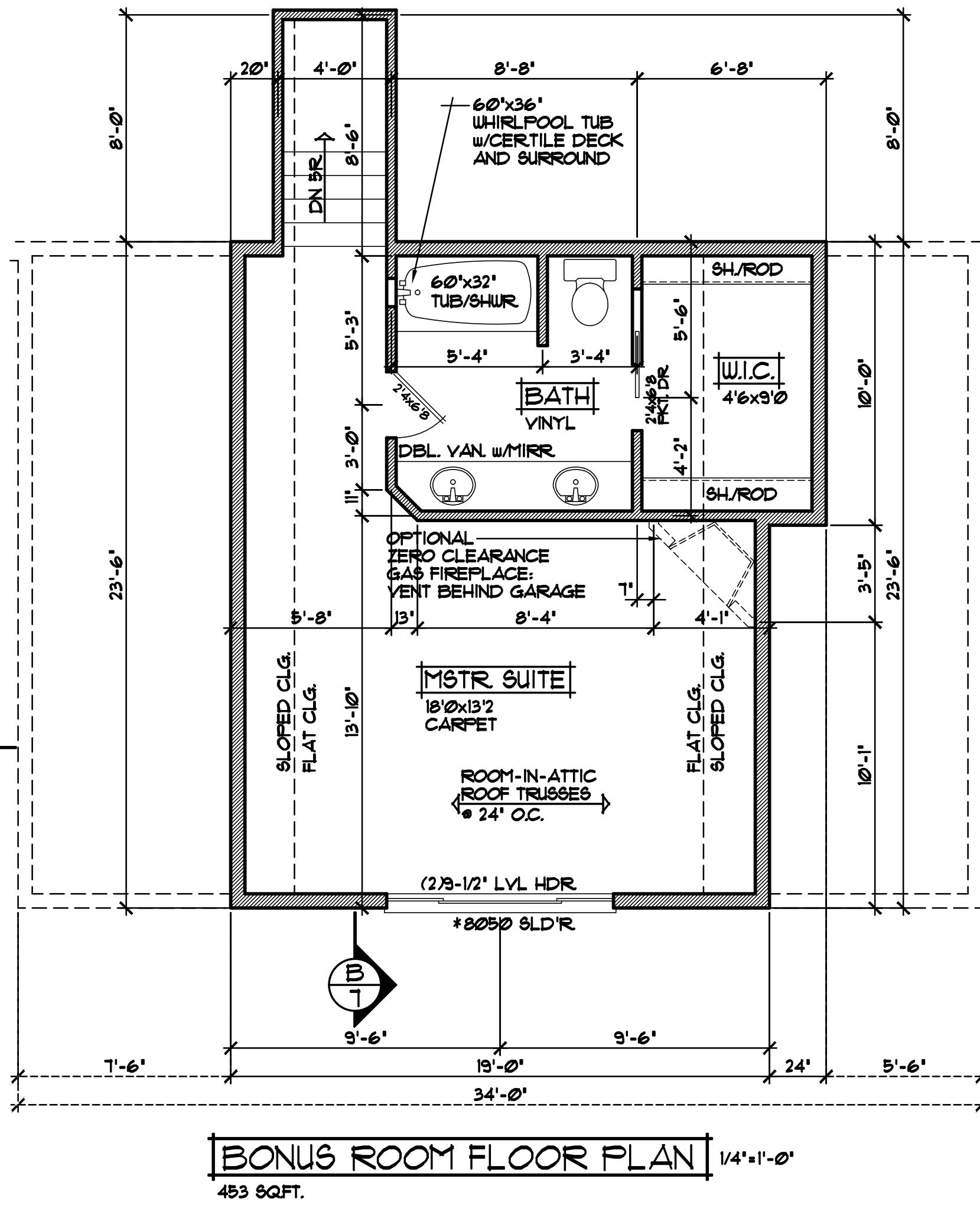
CADD FILE #  
**12052**



REVISIONS	
XXXXXX	BY:XX
XXXXXX	BY:XX



NOTE III  
POTENTIAL SIDE WALKOUT STEP FOOTING, FOURED CONC. FOUNDATION WALL and 2x6 KNEE AS NEEDED PER GRADE, FIELD VERIFY



SPECIAL NOTICE:  
CROIX DESIGN AND DRAFTING, INC. ACCEPTS NO RESPONSIBILITY FOR ERRORS AND/OR OMISSIONS. THESE DRAWINGS ARE DESIGN CONCEPT ONLY. EVERY EFFORT HAS BEEN MADE TO PREVENT MISTAKES AND OMISSIONS. THE USER OF THESE DRAWINGS SHALL BE RESPONSIBLE FOR VERIFYING ALL DIMENSIONS AND CONDITIONS BEFORE CONSTRUCTION. THE USER SHALL BE RESPONSIBLE FOR ANY CHANGES OR ADJUSTMENTS REQUIRED DURING CONSTRUCTION. NO REPRESENTATION IS MADE OR IMPLIED FOR ACCURACY.

OFFICE: 763.757.5987  
FAX: 763.757.4383  
ANDOVER, MINNESOTA  
WWW.CROIXDESIGN.COM  
**CROIX**  
DESIGN & DRAFTING, INC.

BUILT BY:  
**ELEVATE BUILDERS, LLC**

SHEET  
**5**  
OF 8  
CADD FILE #  
12052