

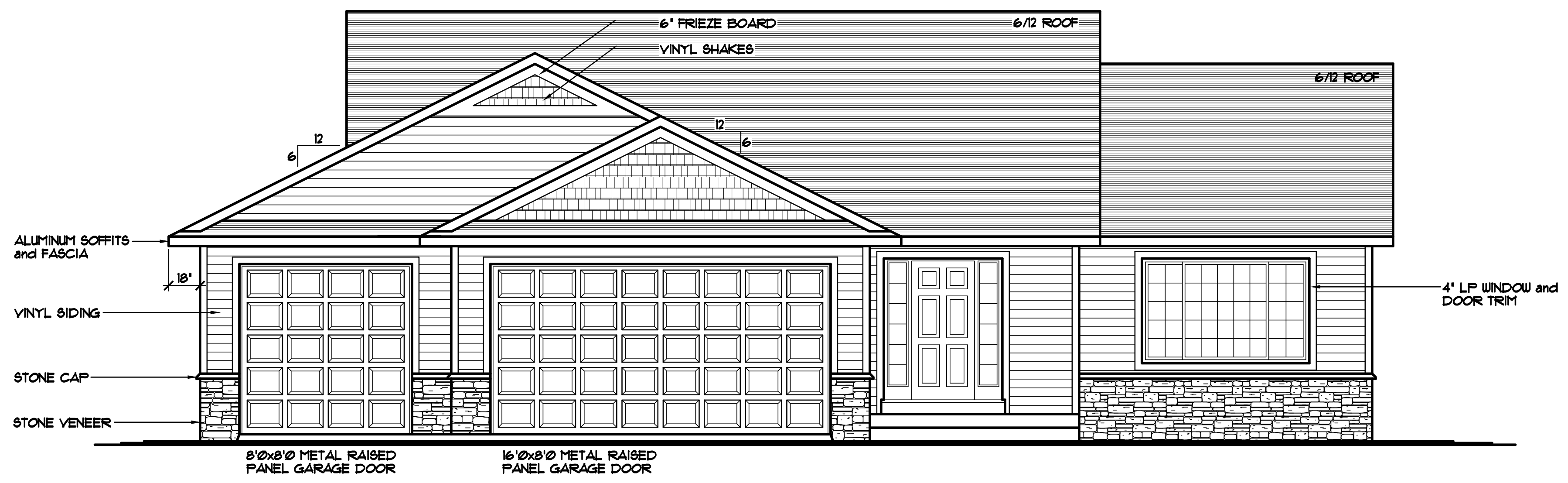
REVISIONS	BY
15100	N.F.
16341	L.V.
17201	R.B.

SPECIAL NOTICE:
CROIX DESIGN AND DRAFTING, INC. ACCEPTS NO RESPONSIBILITY FOR ERRORS AND/OR OMISSIONS. THESE DRAWINGS ARE DESIGN CONCEPT ONLY. EVERY EFFORT HAS BEEN MADE TO DESIGN ACCURATELY. THE OWNER, GENERAL CONTRACTOR, SUB-CONTRACTORS, AND SUPPLIERS MUST CHECK ALL DETAILS AND DIMENSIONS AND BE RESPONSIBLE FOR ANY CHANGES OR ADJUSTMENTS REQUIRED DURING ACTUAL CONSTRUCTION. NO REPRESENTATION IS MADE OR IMPLIED FOR ACCURACY.

COPYRIGHT NOTICE, ALL RIGHTS RESERVED
THESE ARCHITECTURAL PLANS AND ALL RELATED WORKS ARE PROTECTED BY UNITED STATES COPYRIGHT LAWS, AND THAT NOT BE REPRODUCED OR TRANSMITTED IN ANY FORM OR BY ANY MEANS, WITH OR WITHOUT THE EXPRESS WRITTEN PERMISSION OF CROIX DESIGN AND DRAFTING, INC. CROIX DESIGN AND DRAFTING, INC.

HOUSE INTERIOR VOLUME CALCULATION

12062 CUBIC FEET (MAIN LEVEL VOLUME)
 2832 CUBIC FEET (FLOOR TRUSS SPACE VOLUME)
 11890 CUBIC FEET (BASEMENT VOLUME)
 26784 CUBIC FEET (TOTAL INTERIOR VOLUME)



FRONT ELEVATION 1/4" = 1'-0"
 1456 SQ. FT. MAIN LEVEL

THE: **STAN LEE PLAN**
 8672 COLE COURT
 INVER GROVE HEIGHTS, MN

© COPYRIGHT 2014-2017 NOTICE, ALL RIGHTS RESERVED
 CROIX DESIGN AND DRAFTING, INC.

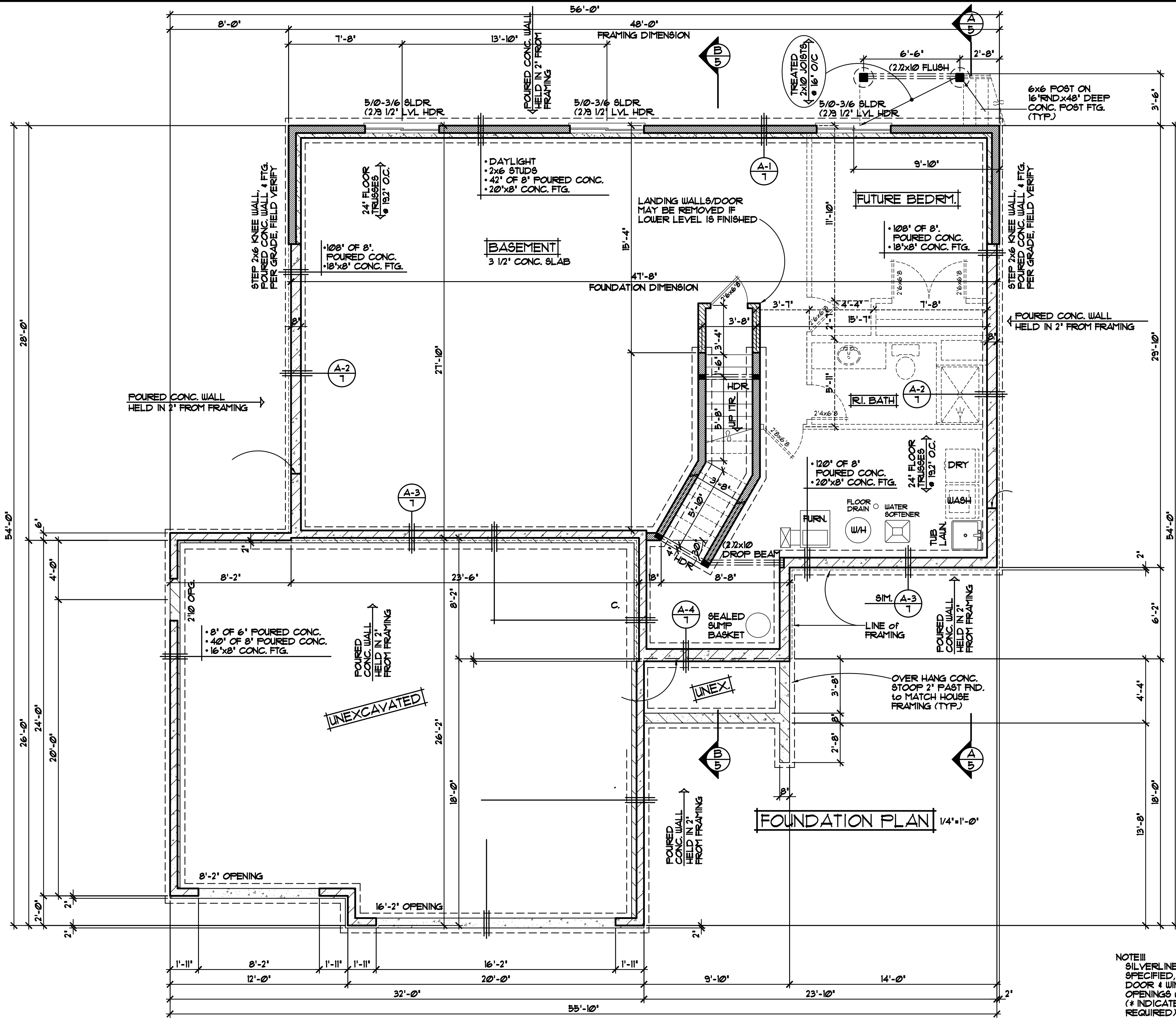
DESIGN and DRAFTING BY:

ARCHITECTURAL DESIGN and DRAFTING SERVICE •
 HOME PALM SERVICE • CUSTOM HOMES • REMODELING •
 PHONE: 763.757.5997 • ANDOVER, MINNESOTA •
 WWW.CROIXDESIGN.COM

BUILT BY:

ELEVATE BUILDERS, LLC
 P.O. BOX 714
 FOREST LAKE, MN 55025

DRAWN R.B.
CHECKED XX
DATE 09/20/2017
SCALE AS NOTED
CADD FILE # 17327
SHEET 1 OF 7



NOTE III
 SILVERLINE VINYL WINDOWS SPECIFIED, VERIFY ALL DOOR & WINDOW ROUGH OPENINGS w/SUPPLIER (* INDICATES SASH LIMITER REQUIRED)

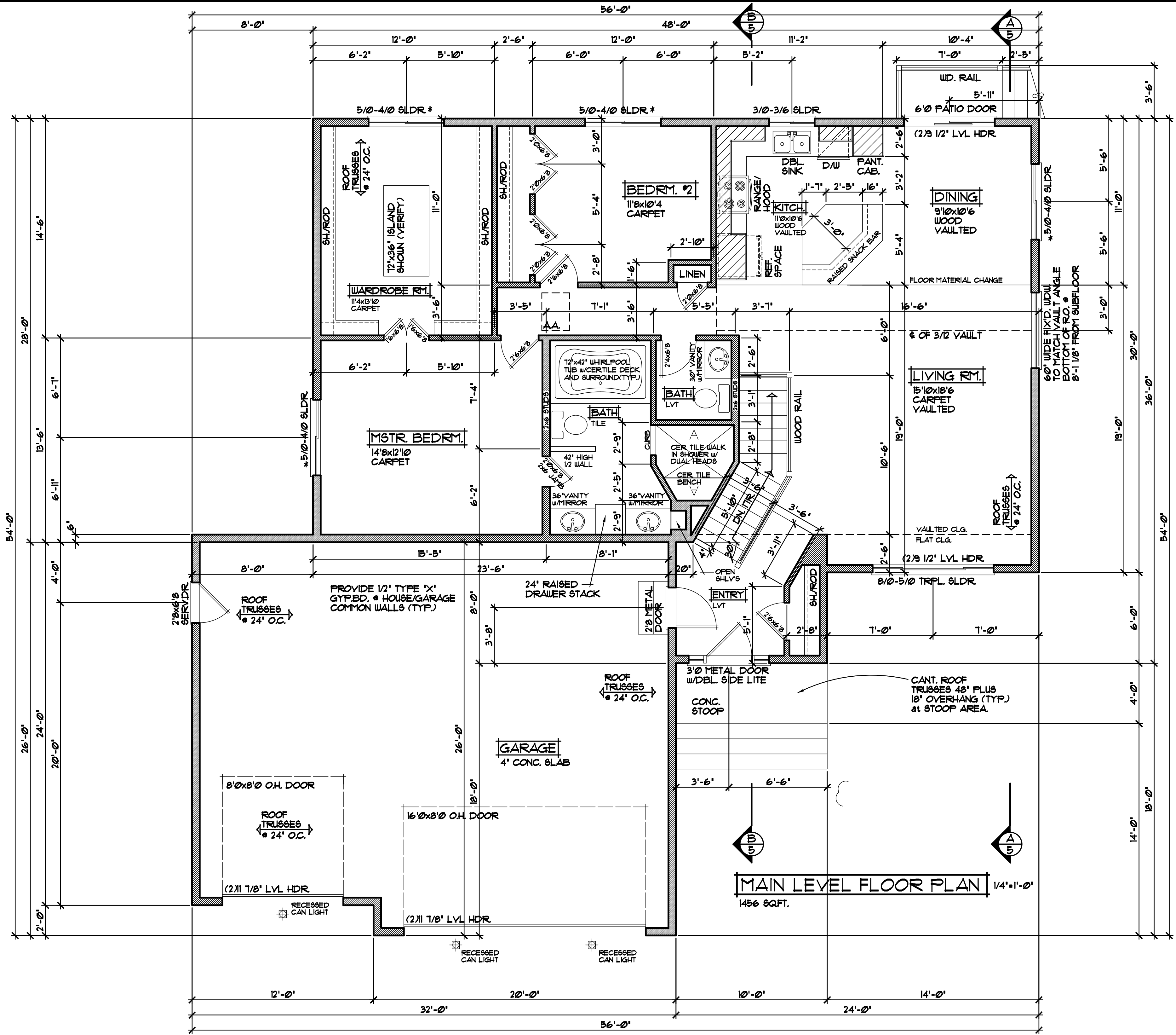
SPECIAL NOTICE:
 CROIX DESIGN AND DRAFTING, INC. ACCEPTS NO RESPONSIBILITY FOR ERRORS AND/OR OMISSIONS. THESE DRAWINGS ARE DESIGN CONCEPT ONLY. EVERY EFFORT HAS BEEN MADE TO PREVENT ERRORS, BUT THE USER MUST CHECK ALL DIMENSIONS AND CONDITIONS BEFORE CONSTRUCTION. THE USER SHALL BE RESPONSIBLE FOR ANY CHANGES OR ADJUSTMENTS REQUIRED DURING ACTUAL CONSTRUCTION. NO REPRESENTATION IS MADE OR IMPLIED FOR ACCURACY.

OFFICE: 763.757.5997
 FAX: 763.757.4383
 ANDOVER, MINNESOTA
 WWW.CROIXDESIGN.COM



BUILT BY:
 ELEVATE BUILDERS, LLC

SHEET
 3
 of 7
 CADD FILE #
 11321



SPECIAL NOTICE:
 CROIX DESIGN AND DRAFTING, INC. ACCEPTS NO RESPONSIBILITY FOR ERRORS AND/OR OMISSIONS. THESE DRAWINGS ARE DESIGN CONCEPT ONLY. EVERY EFFORT HAS BEEN MADE TO PREVENT ERRORS, BUT THE USER MUST CHECK ALL DIMENSIONS AND CONDITIONS OF THE PROJECT AND BE RESPONSIBLE FOR ANY CHANGES OR ADJUSTMENTS REQUIRED DURING ACTUAL CONSTRUCTION. NO REPRESENTATION IS MADE OR IMPLIED FOR ACCURACY.

OFFICE: 763.757.5997
 FAX: 763.757.4383
 ANDOVER, MINNESOTA
 WWW.CROIXDESIGN.COM



BUILT BY:
ELEVATE BUILDERS, LLC

SHEET
4
 of 7
 CADD FILE #
 11321

RLQUIRLED)