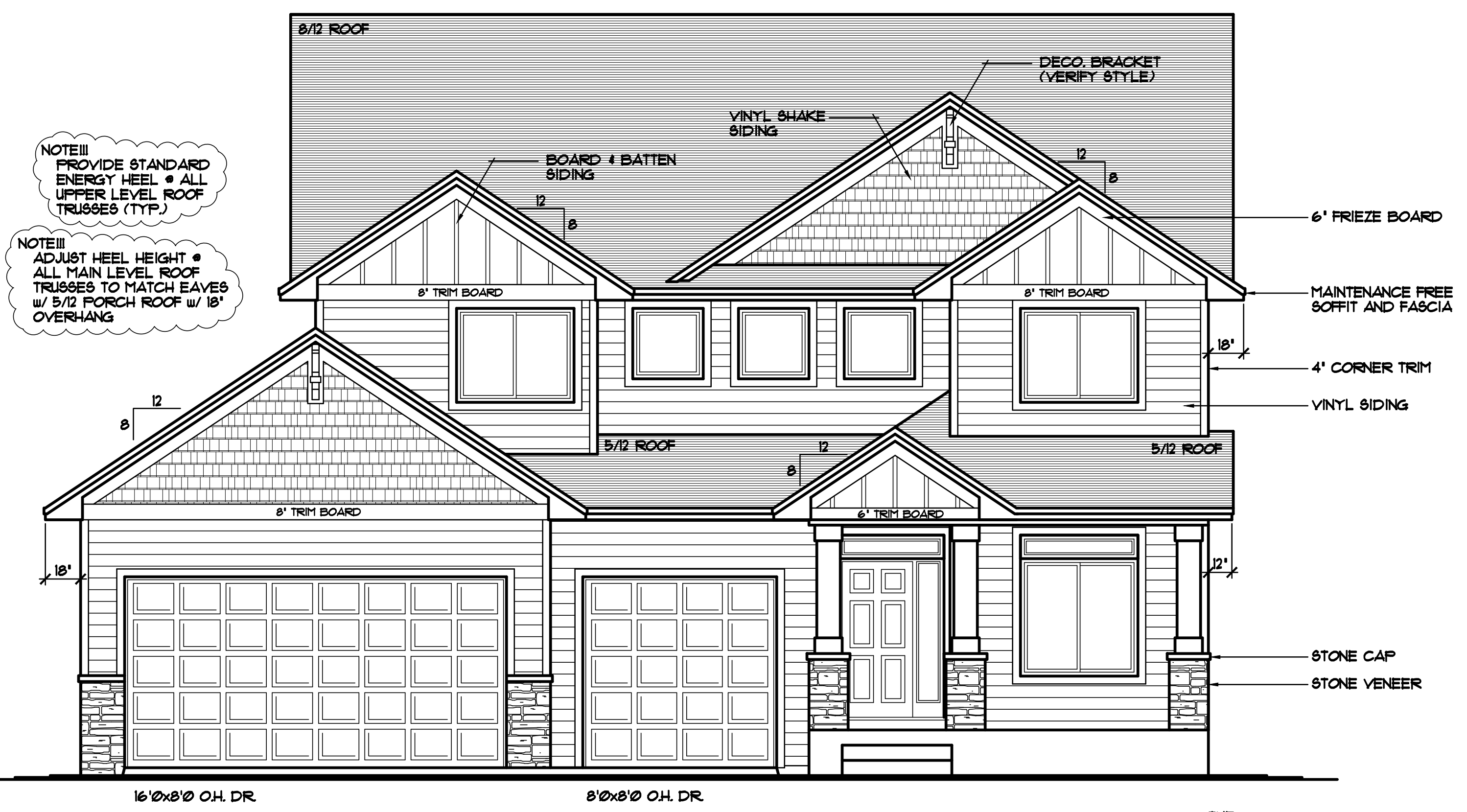


REVISIONS	BY
XXXXX	XX

SPECIAL NOTICE:
CROIX DESIGN AND DRAFTING, INC. ACCEPTS NO RESPONSIBILITY FOR ERRORS AND/OR OMISSIONS. THESE DRAWINGS ARE DESIGN CONCEPT ONLY. EVERY EFFORT HAS BEEN MADE TO DESIGN ACCURATELY. THE OWNER, GENERAL CONTRACTOR, SUB-CONTRACTORS, AND SUPPLIERS MUST CHECK ALL DETAILS AND DIMENSIONS AND BE RESPONSIBLE FOR ANY CHANGES OR ADJUSTMENTS REQUIRED DURING ACTUAL CONSTRUCTION. NO REPRESENTATION IS MADE OR IMPLIED FOR ACCURACY.

COPYRIGHT NOTICE, ALL RIGHTS RESERVED
THESE ARCHITECTURAL PLANS AND ALL RELATED WORKS ARE PROTECTED BY UNITED STATES COPYRIGHT LAWS, AND THAT NOT BE REPRODUCED OR TRANSMITTED IN ANY FORM OR BY ANY MEANS, WITH OR WITHOUT THE EXPRESS WRITTEN PERMISSION OF CROIX DESIGN AND DRAFTING, INC. CROIX DESIGN AND DRAFTING, INC.

- SILVERLINE WINDOWS SPEC'D.
- MAINTENANCE FREE SOFFITS & FASCIA
- STONE VENEER WHERE SHOWN
- VINYL SIDING/CORNER TRIM (TYP.)
- VINYL SHAKE SIDING WHERE SHOWN
- BOARD & BATTEN SIDING WHERE SHOWN
- 4" WINDOW/DOOR TRIM (TYP.)



NOTE III
PROVIDE STANDARD ENERGY HEEL @ ALL UPPER LEVEL ROOF TRUSSES (TYP.)

NOTE III
ADJUST HEEL HEIGHT @ ALL MAIN LEVEL ROOF TRUSSES TO MATCH EAVES w/ 5/12 PORCH ROOF w/ 18' OVERHANG

FRONT ELEVATION 1
1124 SQFT. MAIN LEVEL
1300 SQFT. UPPER LEVEL
2424 SQFT. ABOVE GRADE

THE: **HOBOT RESIDENCE**

© COPYRIGHT 2011 NOTICE, ALL RIGHTS RESERVED
CROIX DESIGN AND DRAFTING, INC.

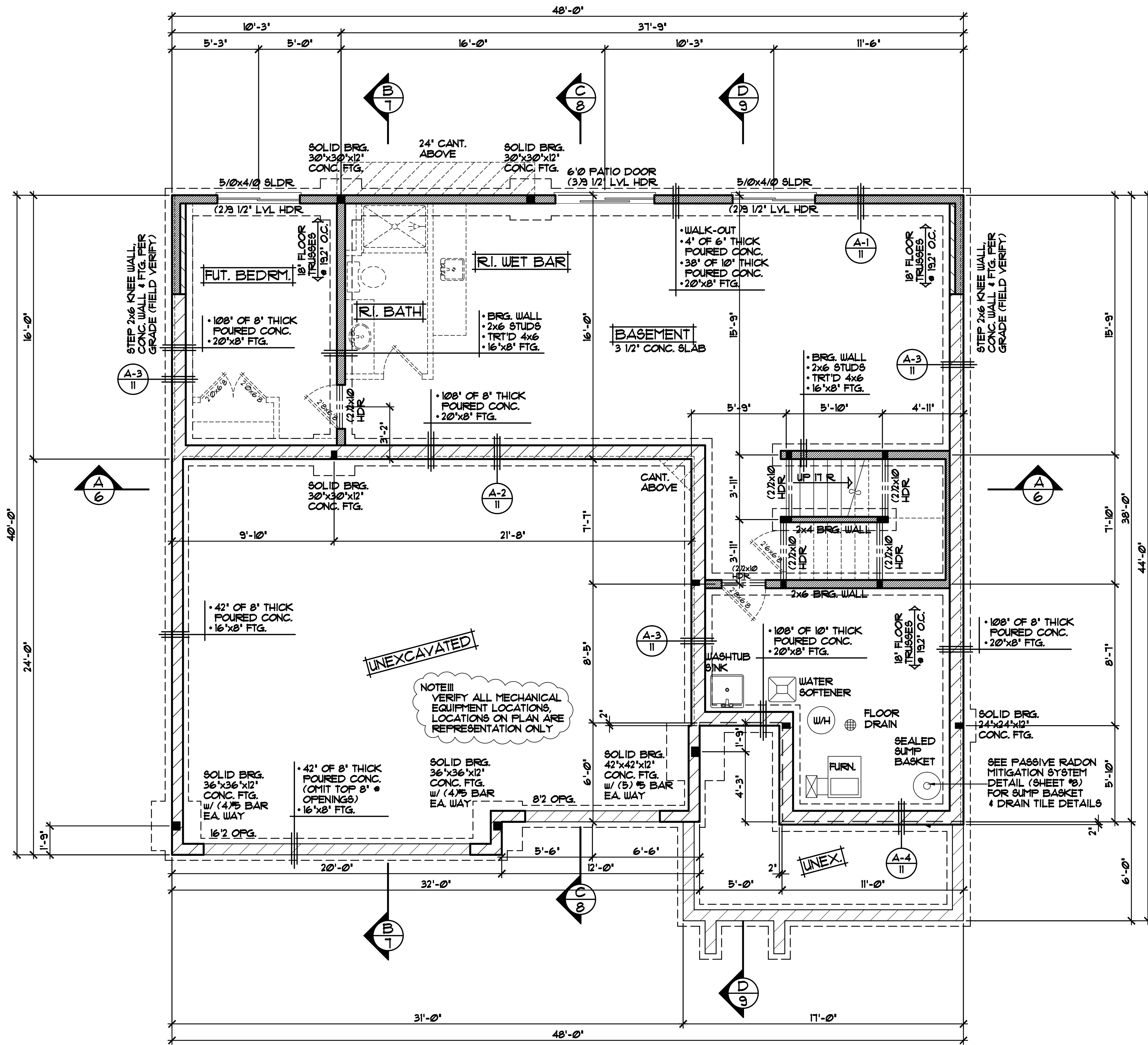
DESIGN and DRAFTING BY:

ARCHITECTURAL DESIGN and DRAFTING SERVICE
HOME PLAN SERVICE • CUSTOM HOMES • REMODELING
PHONE: 763.757.5997 • ANDOVER, MINNESOTA
WWW.CROIXDESIGN.COM

BUILT BY:

ELEVATE BUILDERS, LLC
P.O. BOX 114
FOREST LAKE, MN 55025

DRAWN R.D.	XX
CHECKED XX	XX
DATE: 04/19/2011	
SCALE: AS NOTED	
CADD FILE # 11145	
SHEET	1 OF 11



FOUNDATION PLAN
UNFINISHED

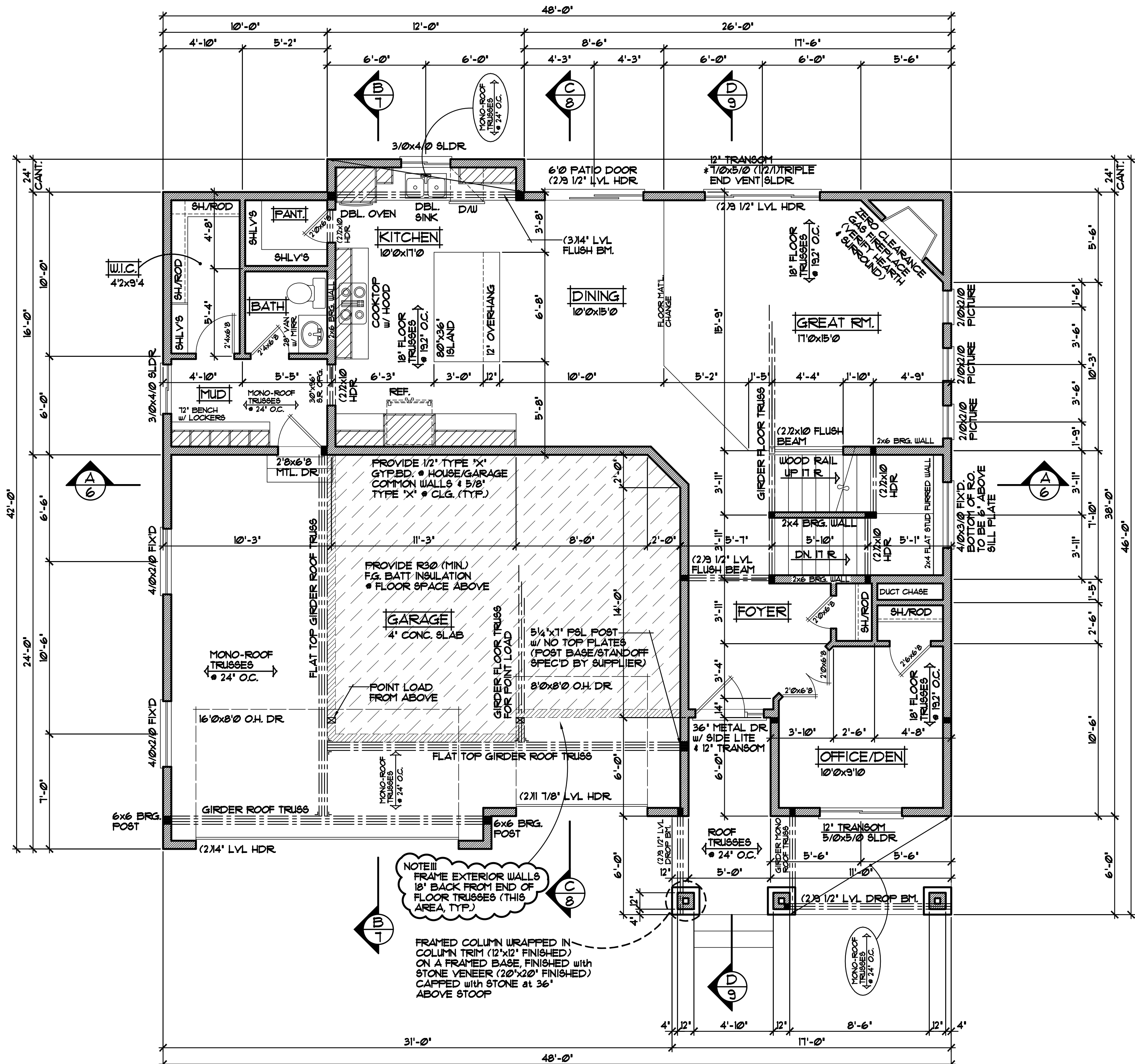
SPECIAL NOTICE:
CROIX DESIGN AND DRAFTING, INC. ACCEPTS NO RESPONSIBILITY FOR ERRORS AND/OR OMISSIONS. THESE DRAWINGS ARE DESIGN CONCEPT ONLY. EVERY EFFORT HAS BEEN MADE TO PREVENT ERRORS AND OMISSIONS. THE USER SHALL BE RESPONSIBLE FOR VERIFYING ALL DIMENSIONS AND BEING RESPONSIBLE FOR ANY CHANGES OR ADJUSTMENTS REQUIRED DURING ACTUAL CONSTRUCTION. NO REPRESENTATION IS MADE OR IMPLIED FOR ACCURACY.

OFFICE: 763.757.5997
FAX: 763.757.4383
ANDOVER, MINNESOTA
WWW.CROIXDESIGN.COM



BUILT BY:
ELEVATE BUILDERS, LLC

SHEET
3
OF 11
CADD FILE #
1149



NOTE III
FRAME EXTERIOR WALLS
18" BACK FROM END OF
FLOOR TRUSSES (THIS
AREA, TYP.)

FRAMED COLUMN WRAPPED IN
COLUMN TRIM (12"x12" FINISHED)
ON A FRAMED BASE, FINISHED WITH
STONE VENEER (20"x20" FINISHED)
CAPPED WITH STONE AT 36"
ABOVE STOOP

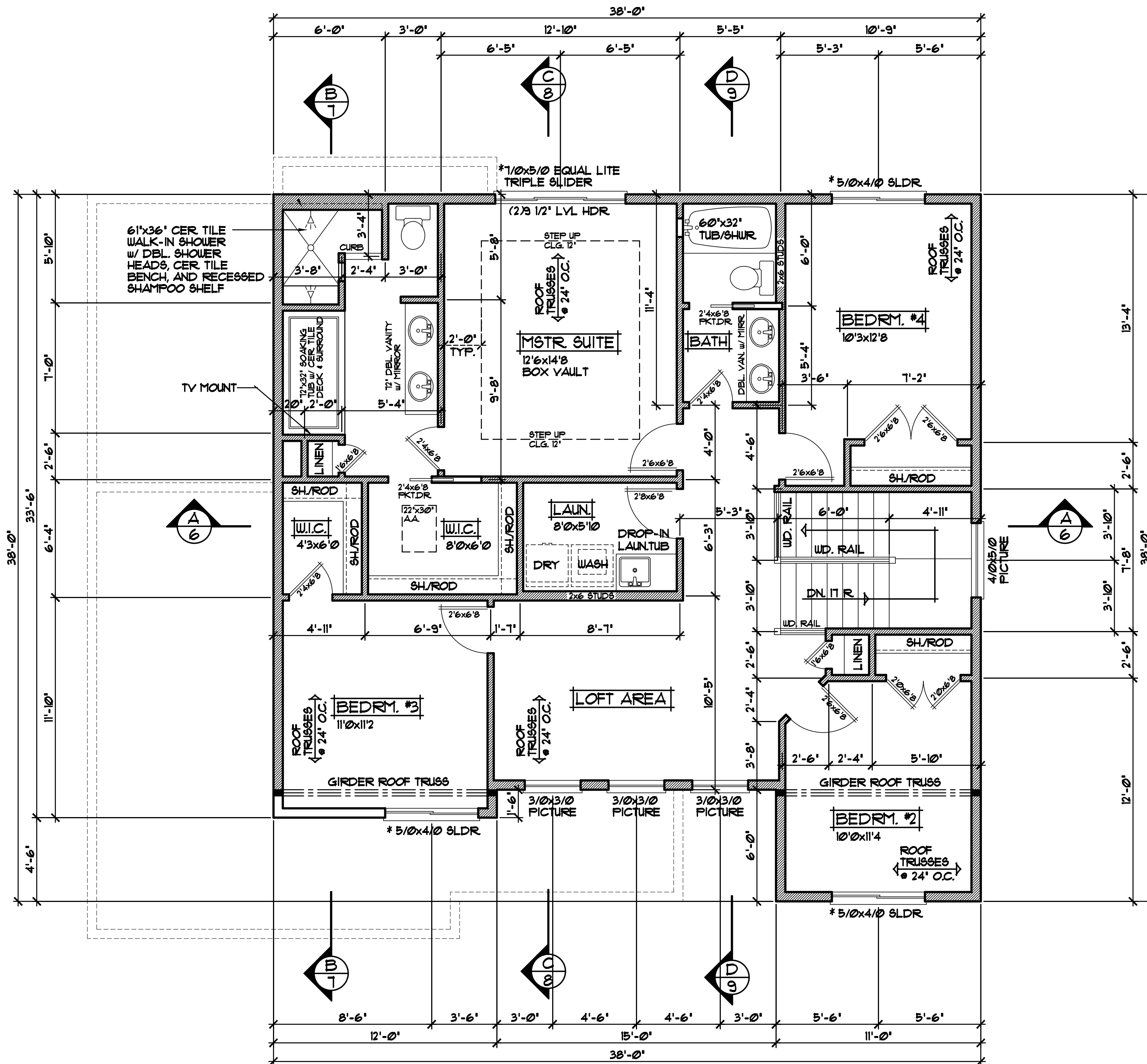
MAIN LEVEL PLAN
1124 SQFT. MAIN LEVEL

SPECIAL NOTICE:
CROIX DESIGN AND DRAFTING, INC. ACCEPTS NO RESPONSIBILITY FOR ERRORS AND/OR OMISSIONS. THESE DRAWINGS ARE DESIGN CONCEPT ONLY. EVERY EFFORT HAS BEEN MADE TO VERIFY ALL DIMENSIONS AND MATERIALS. THE CLIENT IS RESPONSIBLE FOR VERIFYING ALL DIMENSIONS AND MATERIALS BEFORE CONSTRUCTION. ANY CHANGES OR ADJUSTMENTS REQUIRED DURING ACTUAL CONSTRUCTION, NO REPRESENTATION IS MADE OR IMPLIED FOR ACCURACY.

OFFICE: 763.757.5997
FAX: 763.757.4383
ANDOVER, MINNESOTA
WWW.CROIXDESIGN.COM



BUILT BY:
ELEVATE BUILDERS, LLC



SECOND LEVEL PLAN
1300 SQFT. SECOND LEVEL

SPECIAL NOTICE:
CROIX DESIGN AND DRAFTING, INC. ACCEPTS NO RESPONSIBILITY FOR ERRORS AND/OR OMISSIONS. THESE DRAWINGS ARE DESIGN CONCEPT ONLY. EVERY EFFORT HAS BEEN MADE TO PREVENT ERRORS, BUT THE USER MUST VERIFY ALL DIMENSIONS AND CONDITIONS ON THE FIELD. THE USER SHALL BE RESPONSIBLE FOR ANY CHANGES OR ADJUSTMENTS REQUIRED DURING ACTUAL CONSTRUCTION. NO REPRESENTATION IS MADE OR IMPLIED FOR ACCURACY.

OFFICE: 763.757.5997
FAX: 763.757.4383
ANDOVER, MINNESOTA
WWW.CROIXDESIGN.COM



BUILT BY:
ELEVATE BUILDERS, LLC

SHEET
5
OF 11
CADD FILE #
1149