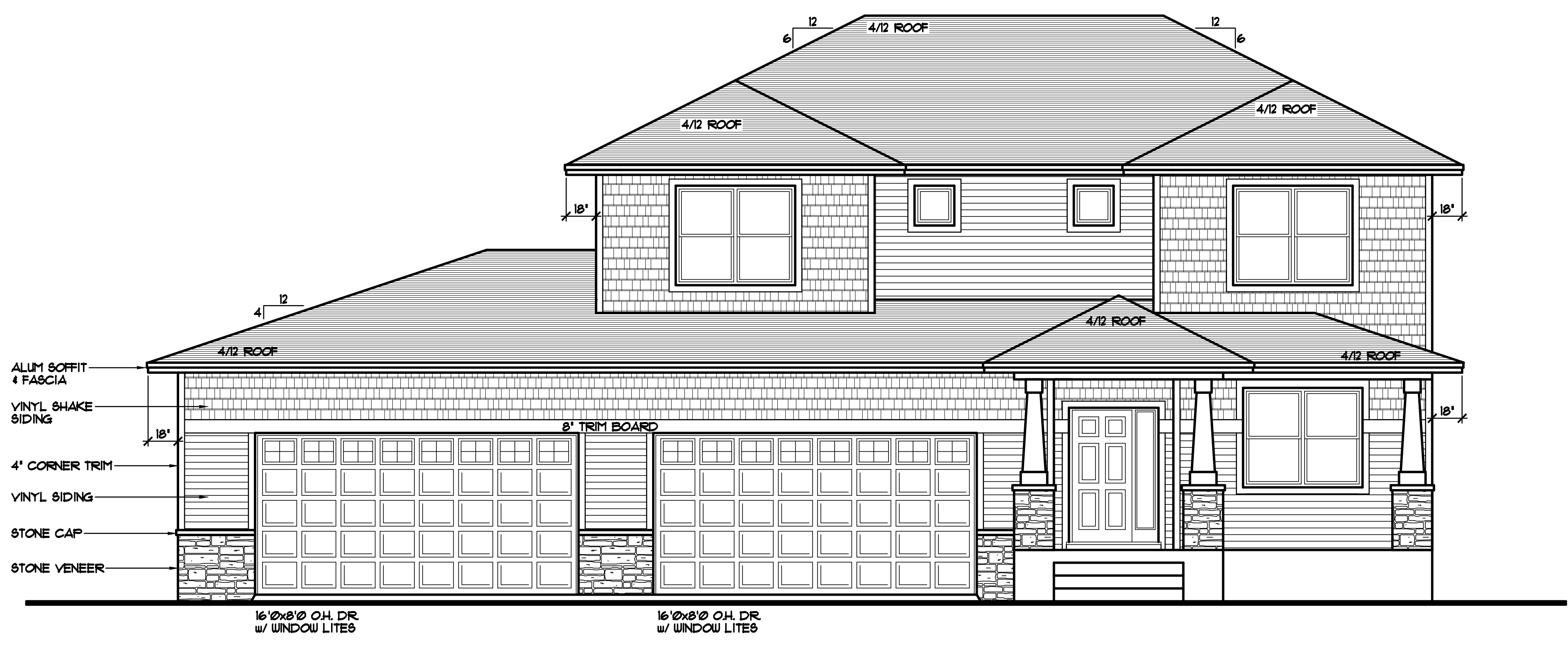


REVISIONS	BY
XXXXX	XX

SPECIAL NOTICE:
CROIX DESIGN AND DRAFTING, INC. ACCEPTS NO RESPONSIBILITY FOR ERRORS AND/OR OMISSIONS. THESE DRAWINGS ARE DESIGN CONCEPT ONLY. EVERY EFFORT HAS BEEN MADE DESIGNING THE PROJECT TO MEET THE INTENT OF THE CLIENT. THE CLIENT SHALL CONTACT THE OWNER, GENERAL CONTRACTOR, SUB-CONTRACTORS, AND SUPPLIERS TO VERIFY ALL DETAILS AND DIMENSIONS AND BE RESPONSIBLE FOR ANY CHANGES OR ADJUSTMENTS REQUIRED DURING ACTUAL CONSTRUCTION. NO REPRESENTATION IS MADE OR IMPLIED FOR ACCURACY.

COPYRIGHT NOTICE, ALL RIGHTS RESERVED
THESE ARCHITECTURAL PLANS AND ALL RELATED WORKS ARE PROTECTED BY UNITED STATES COPYRIGHT LAWS, AND THAT NOT BE REPRODUCED, COPIED, OR TRANSMITTED IN ANY MANNER WITHOUT THE EXPRESS WRITTEN PERMISSION OF CROIX DESIGN AND DRAFTING, INC. CROIX DESIGN AND DRAFTING, INC.



- ALUM SOFFIT & FASCIA
- VINYL SHAKE SIDING
- 4' CORNER TRIM
- VINYL SIDING
- STONE CAP
- STONE VENEER

16'0"x8'0" O.H. DR.
w/ WINDOW LITES

16'0"x8'0" O.H. DR.
w/ WINDOW LITES

FRONT ELEVATION 1/4" = 1'-0"

1462 SQFT. MAIN LEVEL
1761 SQFT. UPPER LEVEL
3223 SQFT. ABOVE GRADE

REVISED R.B. 5/20/16

© COPYRIGHT 2016 NOTICE, ALL RIGHTS RESERVED
CROIX DESIGN AND DRAFTING, INC.

DESIGN and DRAFTING BY:



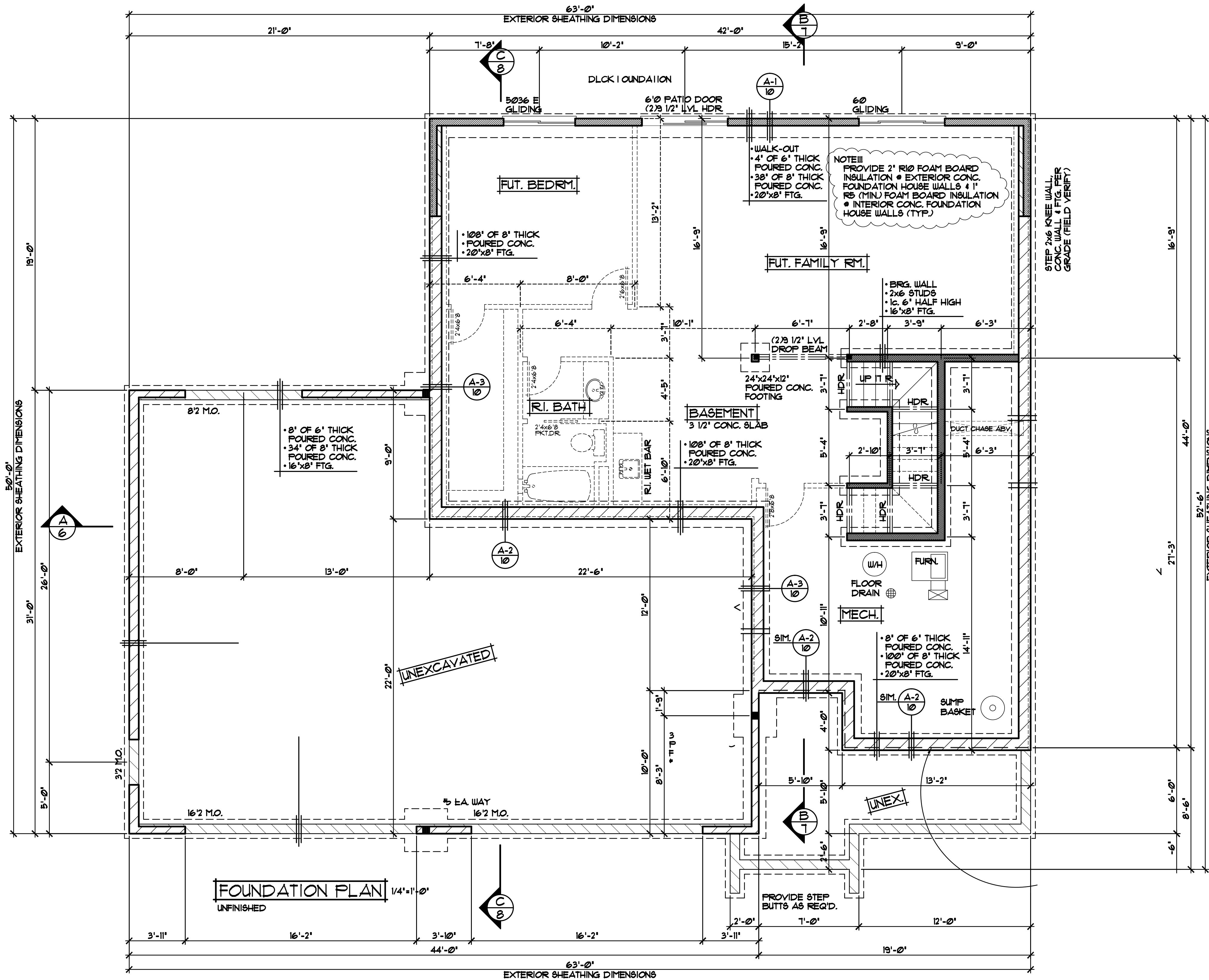
ARCHITECTURAL DESIGN and DRAFTING SERVICE
HOME PLAN SERVICE • CUSTOM HOMES • REMODELING
PHONE: 763.757.5997 • ANDOVER, MINNESOTA
WWW.CROIXDESIGN.COM

BUILT BY:

ELEVATE BUILDERS, LLC

P.O. BOX 114
FOREST LAKE, MN 55025

DRAWN	R.B.
CHECKED	XX
DATE:	4/25/2016
SCALE:	AS NOTED
CADD FILE #	16136
SHEET	1 OF 11

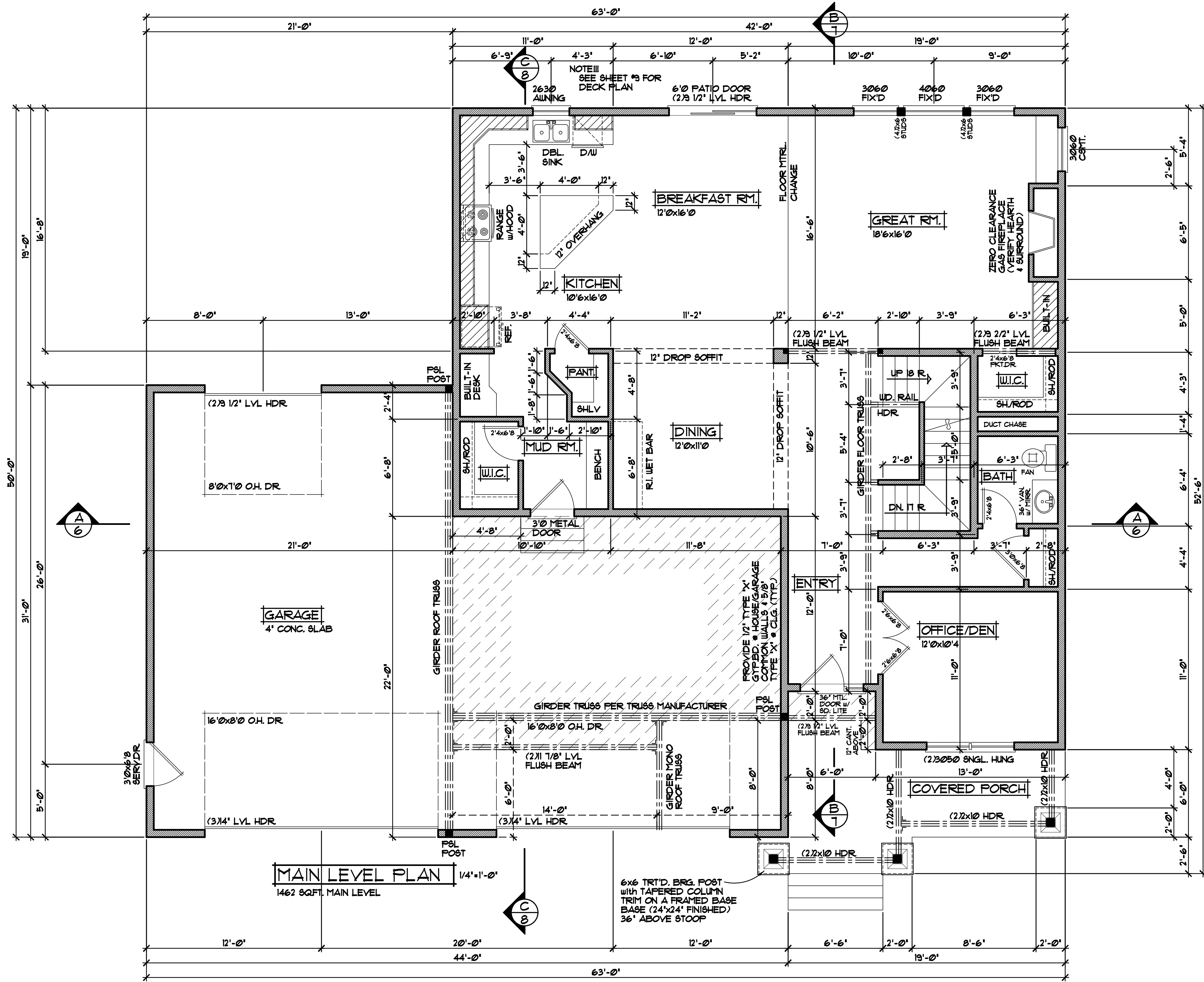


SPECIAL NOTICE:
 CROIX DESIGN AND DRAFTING, INC. ACCEPTS NO RESPONSIBILITY FOR ERRORS AND/OR OMISSIONS. THESE DRAWINGS ARE DESIGN CONCEPT ONLY. EVERY EFFORT HAS BEEN MADE TO PREVENT ERRORS. THE USER SHALL BE RESPONSIBLE FOR VERIFYING ALL DIMENSIONS AND CONDITIONS. THE USER SHALL BE RESPONSIBLE FOR ANY CHANGES OR ADJUSTMENTS REQUIRED DURING CONSTRUCTION. NO REPRESENTATION IS MADE OR IMPLIED FOR ACCURACY.

OFFICE: 763.757.5997
 FAX: 763.757.4383
 ANDOVER, MINNESOTA
 WWW.CROIXDESIGN.COM

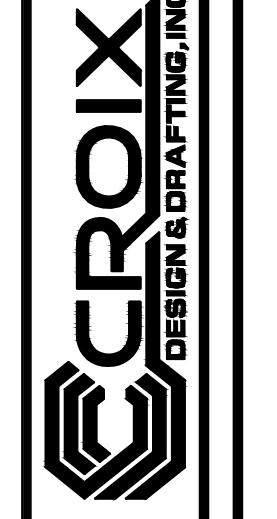


BUILT BY:
ELEVATE BUILDERS, LLC

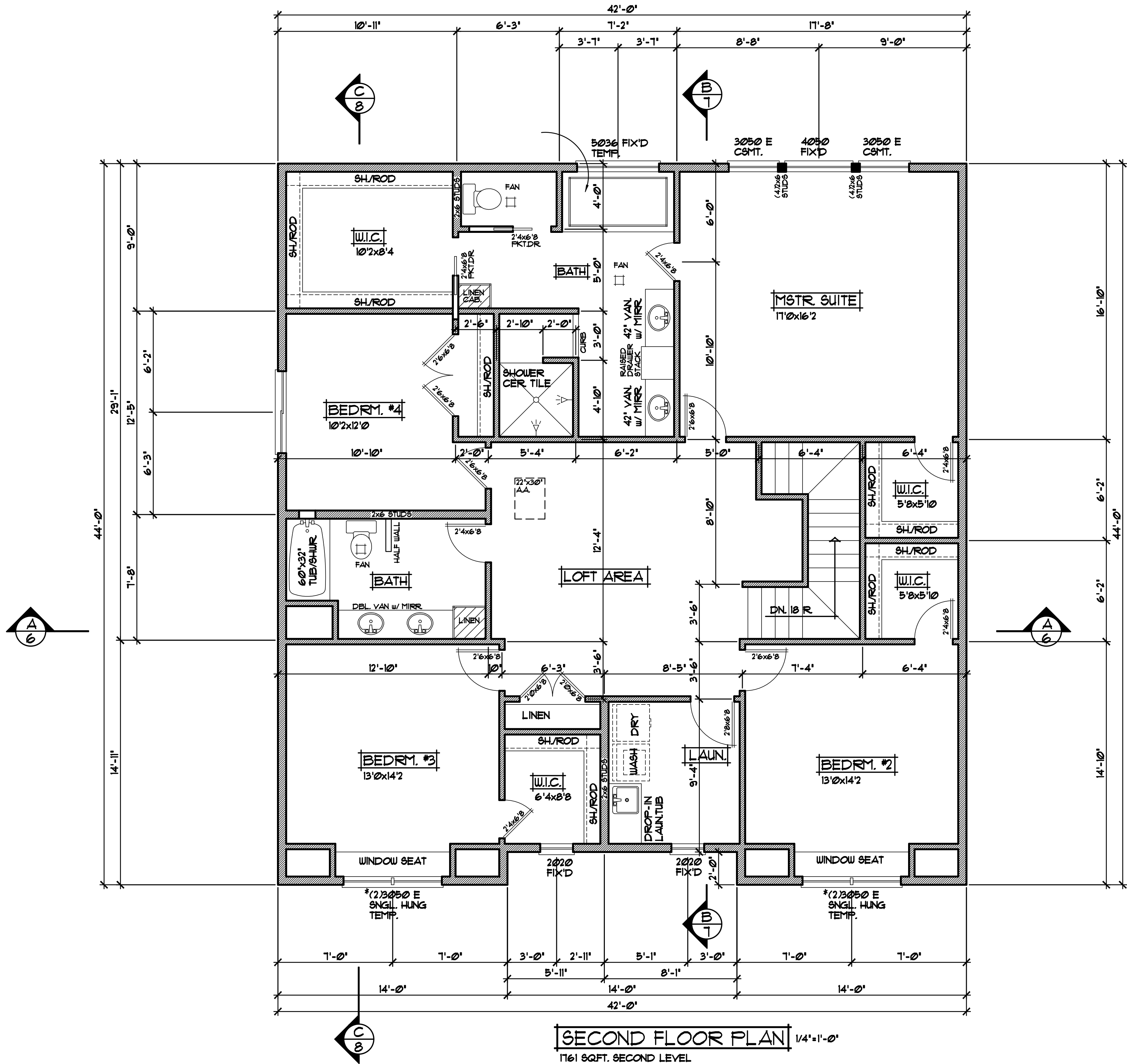


SPECIAL NOTICE:
 CROIX DESIGN AND DRAFTING, INC. ACCEPTS NO RESPONSIBILITY FOR ERRORS AND/OR OMISSIONS. THESE DRAWINGS ARE DESIGN CONCEPT ONLY. EVERY EFFORT HAS BEEN MADE TO PREPARE THESE DRAWINGS TO THE BEST OF OUR KNOWLEDGE AND BELIEFS. THE CLIENT HAS BEEN ADVISED OF THIS AND HAS AGREED TO ACCEPT THE DRAWINGS AND ALL DIMENSIONS AND BE RESPONSIBLE FOR ANY CHANGES OR ADJUSTMENTS REQUIRED DURING ACTUAL CONSTRUCTION. NO REPRESENTATION IS MADE OR IMPLIED FOR ACCURACY.

OFFICE: 763.757.5997
 FAX: 763.757.4383
 ANOKER, MINNESOTA
 WWW.CROIXDESIGN.COM



BUILT BY:
ELEVATE BUILDERS, LLC



SECOND FLOOR PLAN 1/4"=1'-0"
1761 SQFT. SECOND LEVEL

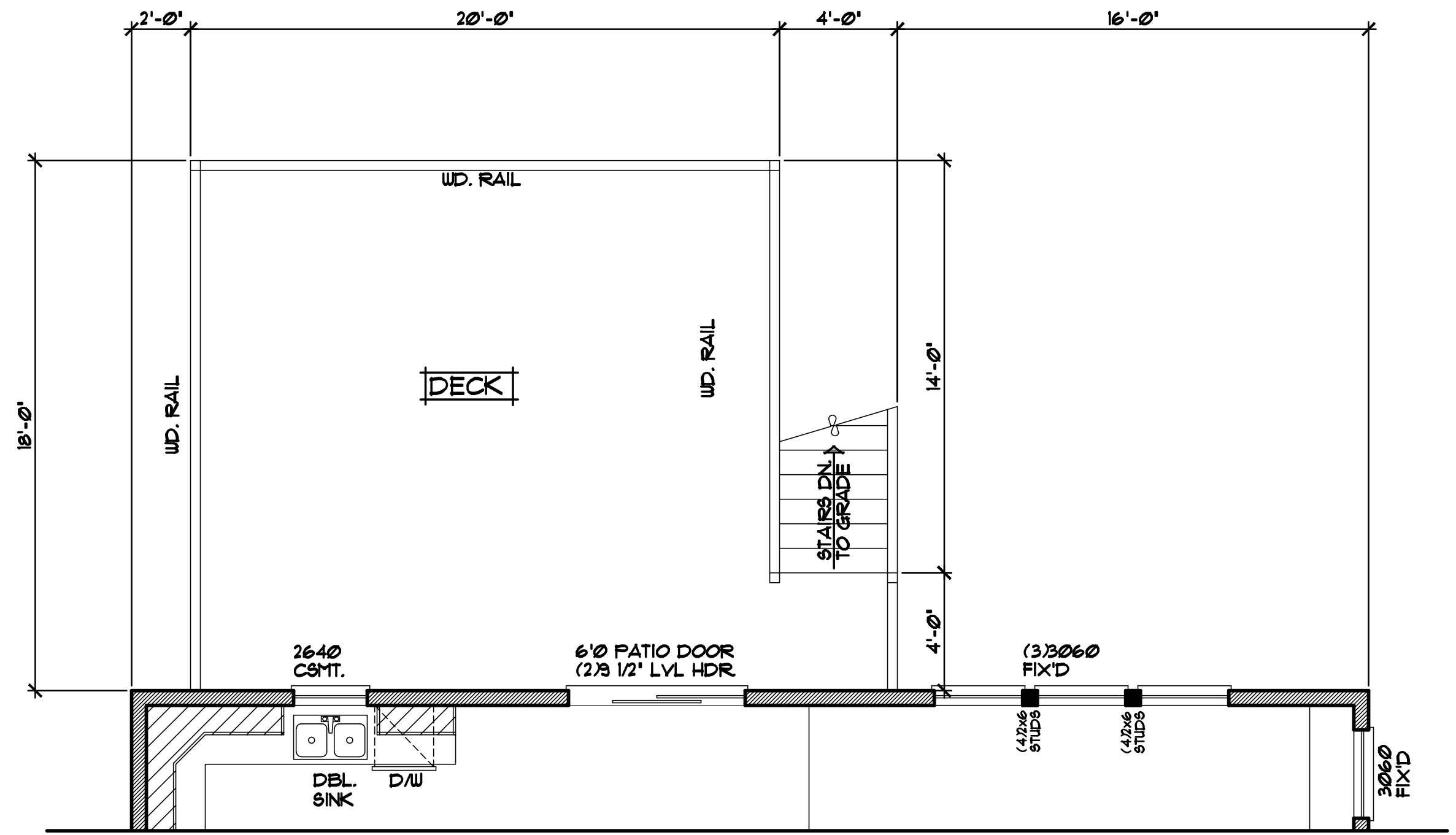
SPECIAL NOTICE:
CROIX DESIGN AND DRAFTING, INC. ACCEPTS NO RESPONSIBILITY FOR ERRORS AND/OR OMISSIONS. THESE DRAWINGS ARE DESIGN CONCEPT ONLY. EVERY EFFORT HAS BEEN MADE TO PREVENT ERRORS, BUT THE USER MUST CHECK ALL DIMENSIONS AND SPECIFICATIONS AGAINST THE ACTUAL CONSTRUCTION. NO REPRESENTATION IS MADE OR IMPLIED FOR ACCURACY.

OFFICE: 763.757.5997
FAX: 763.757.4383
ANDOVER, MINNESOTA
WWW.CROIXDESIGN.COM

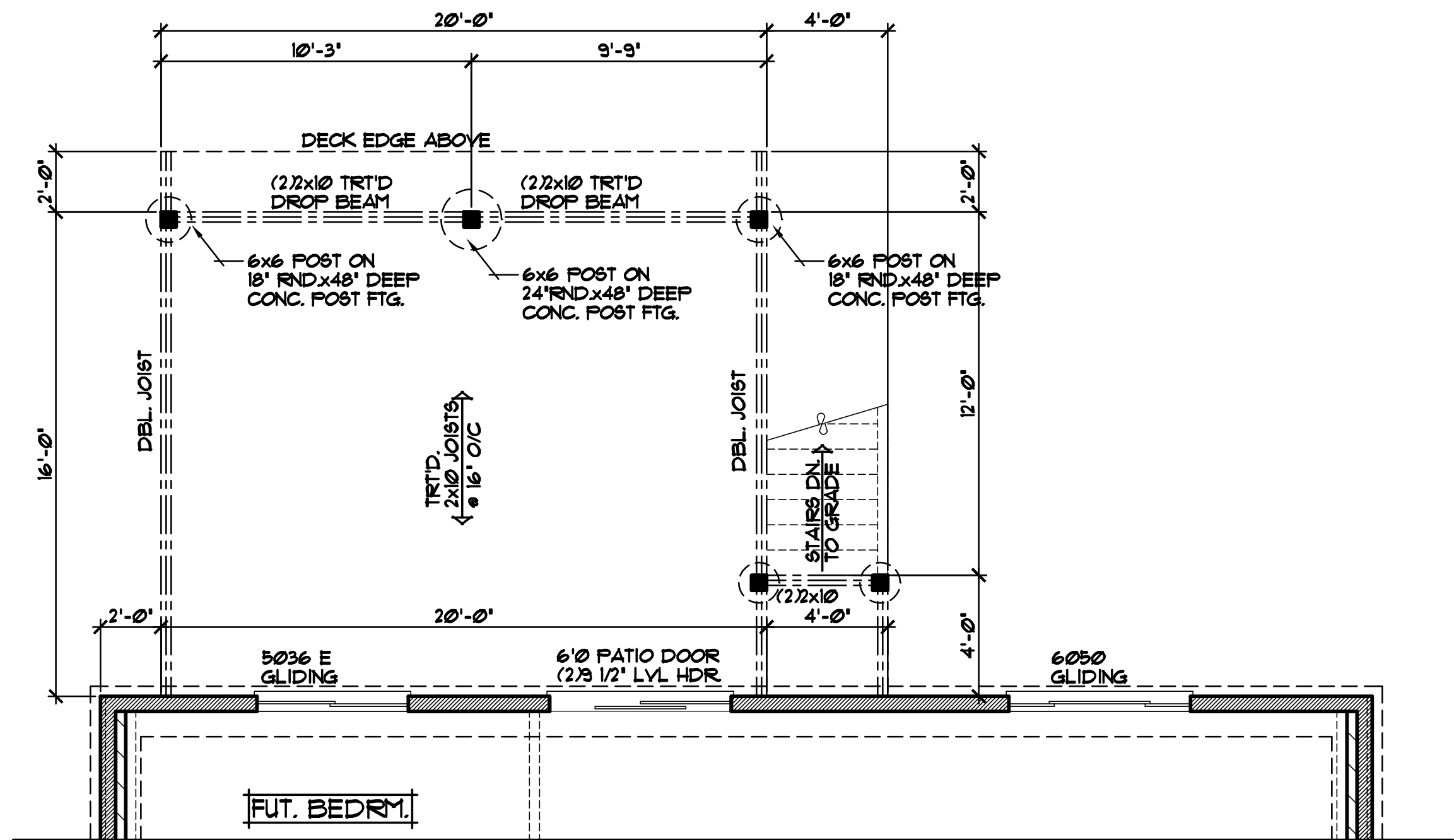


BUILT BY:
ELEVATE BUILDERS, LLC

SHEET
5
OF 11
CADD FILE #
16196



DECK PLAN 1/4"=1'-0"



DECK FOUNDATION 1/4"=1'-0"

SPECIAL NOTICE:
 CROIX DESIGN AND DRAFTING, INC. ACCEPTS NO RESPONSIBILITY FOR ERRORS AND/OR OMISSIONS. THESE DRAWINGS ARE DESIGN CONCEPT ONLY. EVERY EFFORT HAS BEEN MADE TO PREVENT AND ELIMINATE ERRORS AND OMISSIONS. THE USER SHALL CHECK ALL DIMENSIONS AND CONDITIONS OF THE PROJECT BEFORE CONSTRUCTION. THE USER SHALL BE RESPONSIBLE FOR ANY CHANGES OR ADJUSTMENTS REQUIRED DURING CONSTRUCTION. NO REPRESENTATION IS MADE OR IMPLIED FOR ACCURACY.

OFFICE: 763.757.5997
 FAX: 763.757.4383
 ANDOVER, MINNESOTA
 WWW.CROIXDESIGN.COM



BUILT BY:
ELEVATE BUILDERS, LLC

SHEET
 9
 of 11
 CADD FILE #
 16196