

REVISIONS	BY
02003	RM.

SPECIAL NOTICE:
CROIX DESIGN AND DRAFTING, INC. ACCEPTS NO RESPONSIBILITY FOR ERRORS AND/OR OMISSIONS. THESE DRAWINGS ARE DESIGN CONCEPT ONLY. EVERY EFFORT HAS BEEN MADE DESIGNING ACCURATELY THE HOUSE GENERAL CONTRACTOR. THE ARCHITECTURAL SUB-CONTRACTORS AND SUPPLIERS MUST CHECK ALL DETAILS AND DIMENSIONS AND BE RESPONSIBLE FOR ANY CHANGES OR ADJUSTMENTS REQUIRED DURING ACTUAL CONSTRUCTION. NO REPRESENTATION IS MADE OR IMPLIED FOR ACCURACY.

COPYRIGHT NOTICE, ALL RIGHTS RESERVED
THESE ARCHITECTURAL PLANS AND ALL RELATED WORKS ARE PROTECTED BY UNITED STATES COPYRIGHT LAWS, AND THAT NOT BE REPRODUCED OR TRANSMITTED IN ANY FORM OR BY ANY MEANS, WITH OR WITHOUT THE EXPRESS WRITTEN PERMISSION OF CROIX DESIGN AND DRAFTING, INC. CROIX DESIGN AND DRAFTING, INC.

DESIGN and DRAFTING BY:
CROIX DESIGN and DRAFTING, Inc.
• ARCHITECTURAL DESIGN and DRAFTING SERVICE •
• HOME PLAN SERVICE • CUSTOM HOMES • REMODELING •
• PH: (763) 757-5997 • FAX: (763) 757-4383 •
• WWW.CROIXDESIGN.COM •

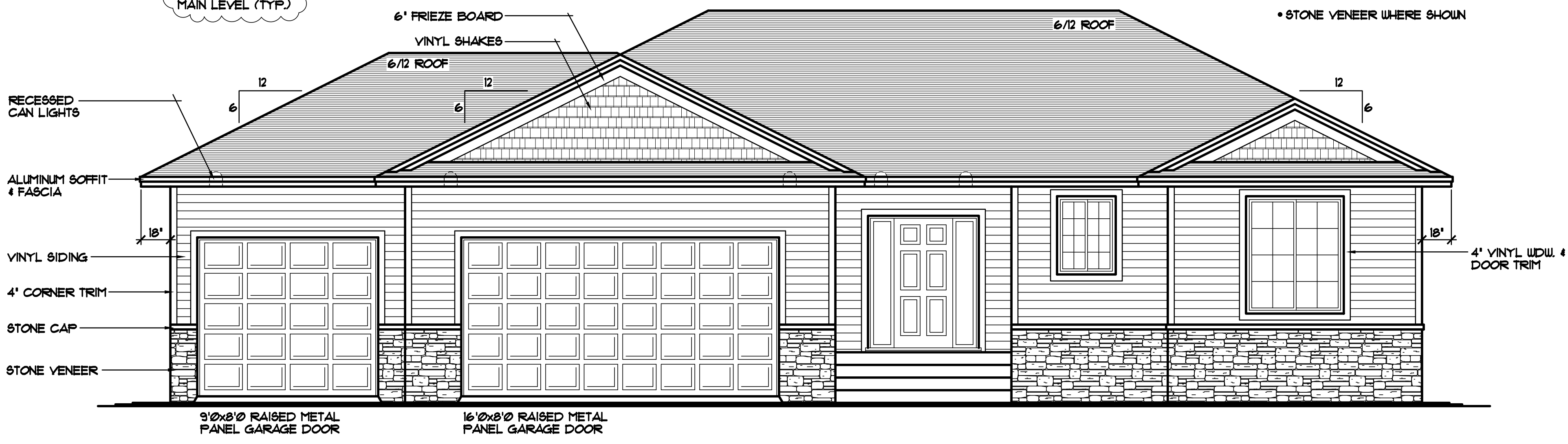
BUILT BY:
ELEVATE BUILDERS, LLC
P.O. BOX 114
FOREST LAKE, MN 55025

DRAWN J.C.
CHECKED SET 1
DATE 09/18/2014
SCALE AS NOTED
CADD FILE # 14269-L
SHEET 1 OF 6

NOTE!!!
9'-1 1/8" PLATE
HEIGHT • ENTIRE
MAIN LEVEL (TYP.)

NOTE!!!
PROVIDE STANDARD
ENERGY HEEL • ALL
ROOF TRUSSES (TYP.)

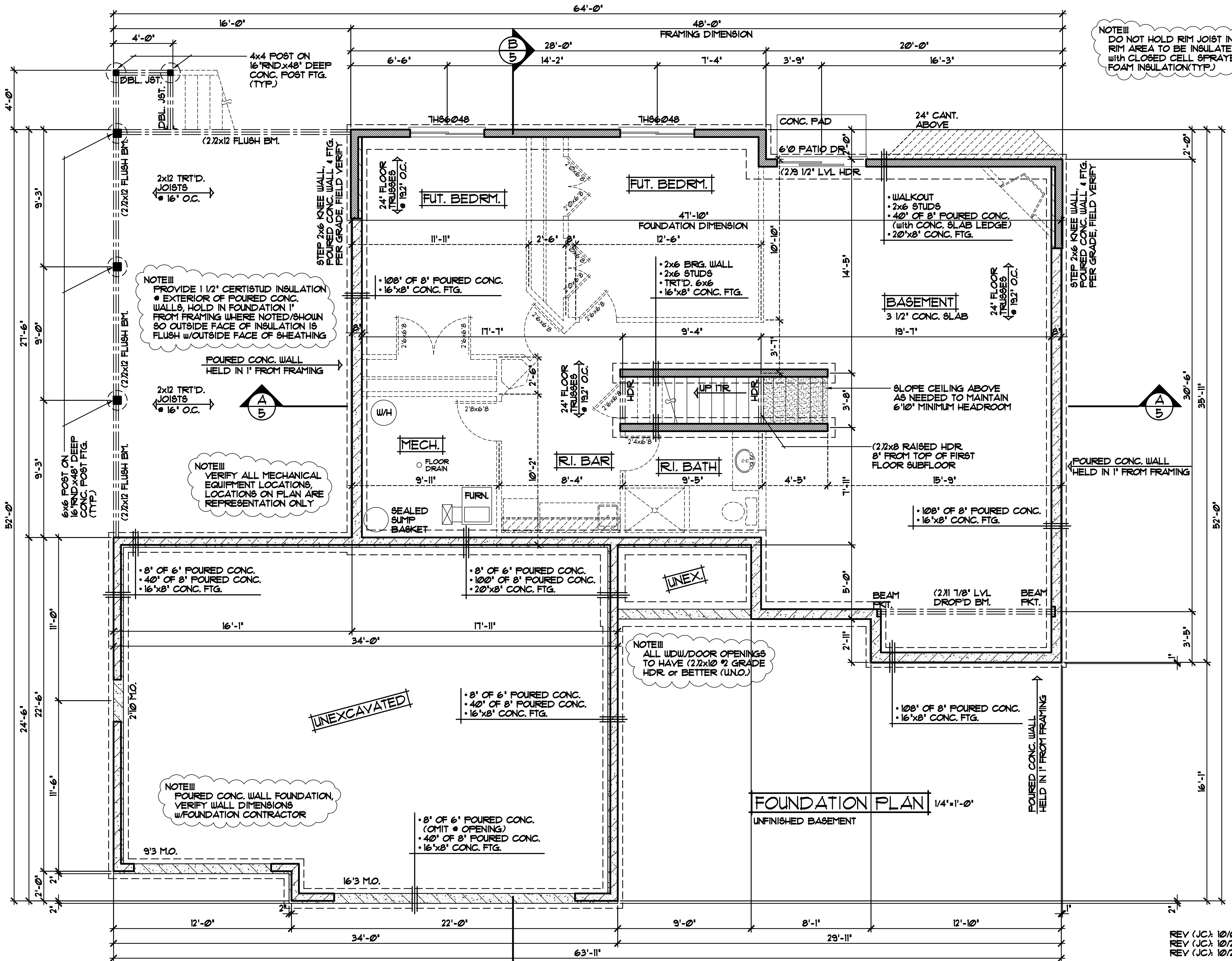
- JELD WEN WINDOWS SPEC'D.
- WINDOWS w/GRIDS WHERE SHOWN
- VINYL SHAKES WHERE SHOWN
- VINYL SIDING • FRONT, SIDES, & REAR
- ALUMINUM SOFFITS & FASCIA
- STONE VENEER WHERE SHOWN



FRONT ELEVATION 1/4" = 1'-0"
1468 SQ. FT. MAIN LEVEL

THE:
KENNY PLAN
REV (JC): 10/01/2014
REV (JC): 10/20/2014
REV (JC): 10/24/2014

© COPYRIGHT 2002-2014 NOTICE, ALL RIGHTS RESERVED
CROIX DESIGN and DRAFTING, INC.



NOTE III
DO NOT HOLD RIM JOIST IN!!!
RIM AREA TO BE INSULATED
WITH CLOSED CELL SPRAYED
FOAM INSULATION (TYP.)

NOTE III
PROVIDE 1 1/2" CERTISTUD INSULATION
EXTERIOR OF POURED CONC.
WALLS, HOLD IN FOUNDATION 1"
FROM FRAMING WHERE NOTED/SHOWN
SO OUTSIDE FACE OF INSULATION IS
FLUSH W/OUTSIDE FACE OF SHEATHING

NOTE III
VERIFY ALL MECHANICAL
EQUIPMENT LOCATIONS,
LOCATIONS ON PLAN ARE
REPRESENTATION ONLY

NOTE III
POURED CONC. WALL FOUNDATION,
VERIFY WALL DIMENSIONS
W/FOUNDATION CONTRACTOR

NOTE III
ALL WDW/DOOR OPENINGS
TO HAVE (2x2x10 2 GRADE
HDR OR BETTER (UNO.))

REVISIONS
XX/XX/XX 0000 BY:XX
XX/XX/XX 0000 BY:XX

SPECIAL NOTICE:
CROIX DESIGN AND DRAFTING, INC. ACCEPTS NO RESPONSIBILITY FOR ERRORS AND/OR
OMISSIONS. THESE DRAWINGS ARE DESIGN CONCEPT ONLY. EVERY EFFORT HAS BEEN MADE
TO PREVENT ERRORS AND OMISSIONS. THE USER SHALL BE RESPONSIBLE FOR VERIFYING ALL
DIMENSIONS AND BE RESPONSIBLE FOR ANY CHANGES OR ADJUSTMENTS REQUIRED DURING
ACTUAL CONSTRUCTION. NO REPRESENTATION IS MADE OR IMPLIED FOR ACCURACY.

CROIX DESIGN and DRAFTING, Inc.
PH: (763) 757-5997 FAX: (763) 757-4383 ANDOVER, MINNESOTA

BUILT BY:
ELEVATE BUILDERS, LLC

SHEET
3
OF 6
CADD FILE #
14269-L

REV (JC): 10/01/2014
REV (JC): 10/20/2014
REV (JC): 10/24/2014

NOTE III
JELD-WEN WINDOW SIZES SPEC'D.
VERIFY ALL DOOR AND WINDOW
ROUGH OPENINGS WITH SUPPLIER

FOUNDATION PLAN 1/4"=1'-0"
UNFINISHED BASEMENT

NOTE III
DO NOT HOLD RIM JOIST IN III RIM AREA TO BE INSULATED WITH CLOSED CELL SPRAYED FOAM INSULATION (TYP.)

NOTE III
9'-1 1/8' PLATE HEIGHT @ ENTIRE MAIN LEVEL (TYP.)

NOTE III
TOP OF RO. FOR ALL WINDOWS TO BE 1'-10 1/2" FROM SUB FLOOR (UNO.)

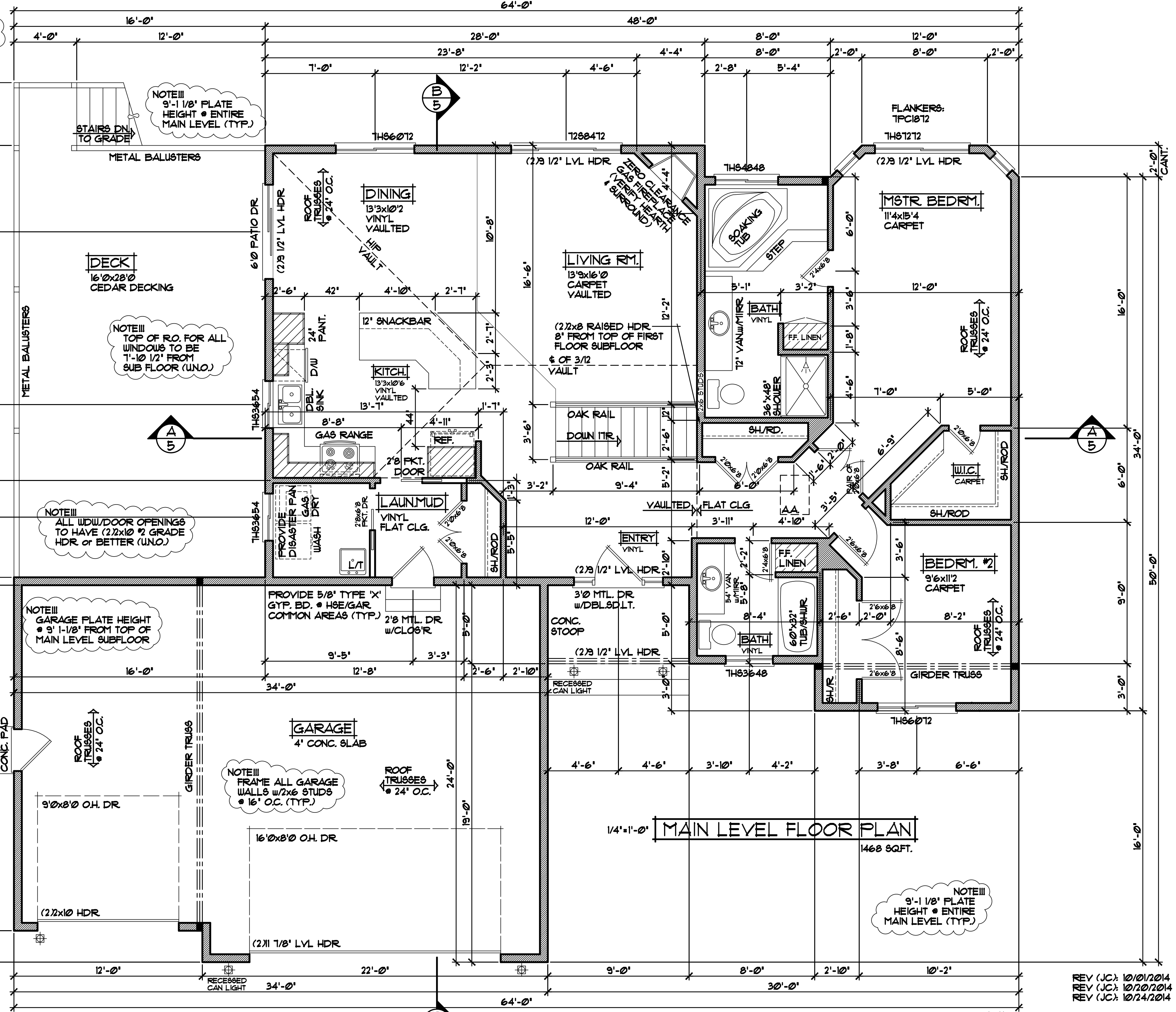
NOTE III
ALL WIDW/DOOR OPENINGS TO HAVE (2) 2x10 @ 2 GRADE HDR OR BETTER (UNO.)

NOTE III
GARAGE PLATE HEIGHT @ 9'-1 1/8" FROM TOP OF MAIN LEVEL SUBFLOOR

NOTE III
FRAME ALL GARAGE WALLS w/ 2x6 STUDS @ 16" O.C. (TYP.)

NOTE III
9'-1 1/8' PLATE HEIGHT @ ENTIRE MAIN LEVEL (TYP.)

NOTE III
JELD-WEN WINDOW SIZES SPEC'D. VERIFY ALL DOOR AND WINDOW ROUGH OPENINGS WITH SUPPLIER



1/4"=1'-0" MAIN LEVEL FLOOR PLAN

1468 SQFT.

REVISIONS
XXXXXX 0000 BY:XX
XXXXXX 0000 BY:XX

SPECIAL NOTICE:
CROIX DESIGN AND DRAFTING, INC. ACCEPTS NO RESPONSIBILITY FOR ERRORS AND/OR OMISSIONS. THESE DRAWINGS ARE DESIGN CONCEPT ONLY. EVERY EFFORT HAS BEEN MADE TO PREVENT ERRORS AND OMISSIONS. THESE DRAWINGS ARE NOT TO BE USED FOR PERMITS, BIDDING, OR CONSTRUCTION WITHOUT THE SIGNATURE AND SEAL OF A PROFESSIONAL ENGINEER OR ARCHITECT. ANY CHANGES OR ADJUSTMENTS REQUIRED DURING ACTUAL CONSTRUCTION, NO REPRESENTATION IS MADE OR IMPLIED FOR ACCURACY.

CROIX DESIGN and DRAFTING, Inc.
PH: (763) 757-5997 FAX: (763) 757-4383 ANDOVER, MINNESOTA

BUILT BY:
ELEVATE BUILDERS, LLC

SHEET
4
of 6
CADD FILE #
14269-L

REV (JC): 10/01/2014
REV (JC): 10/20/2014
REV (JC): 10/24/2014