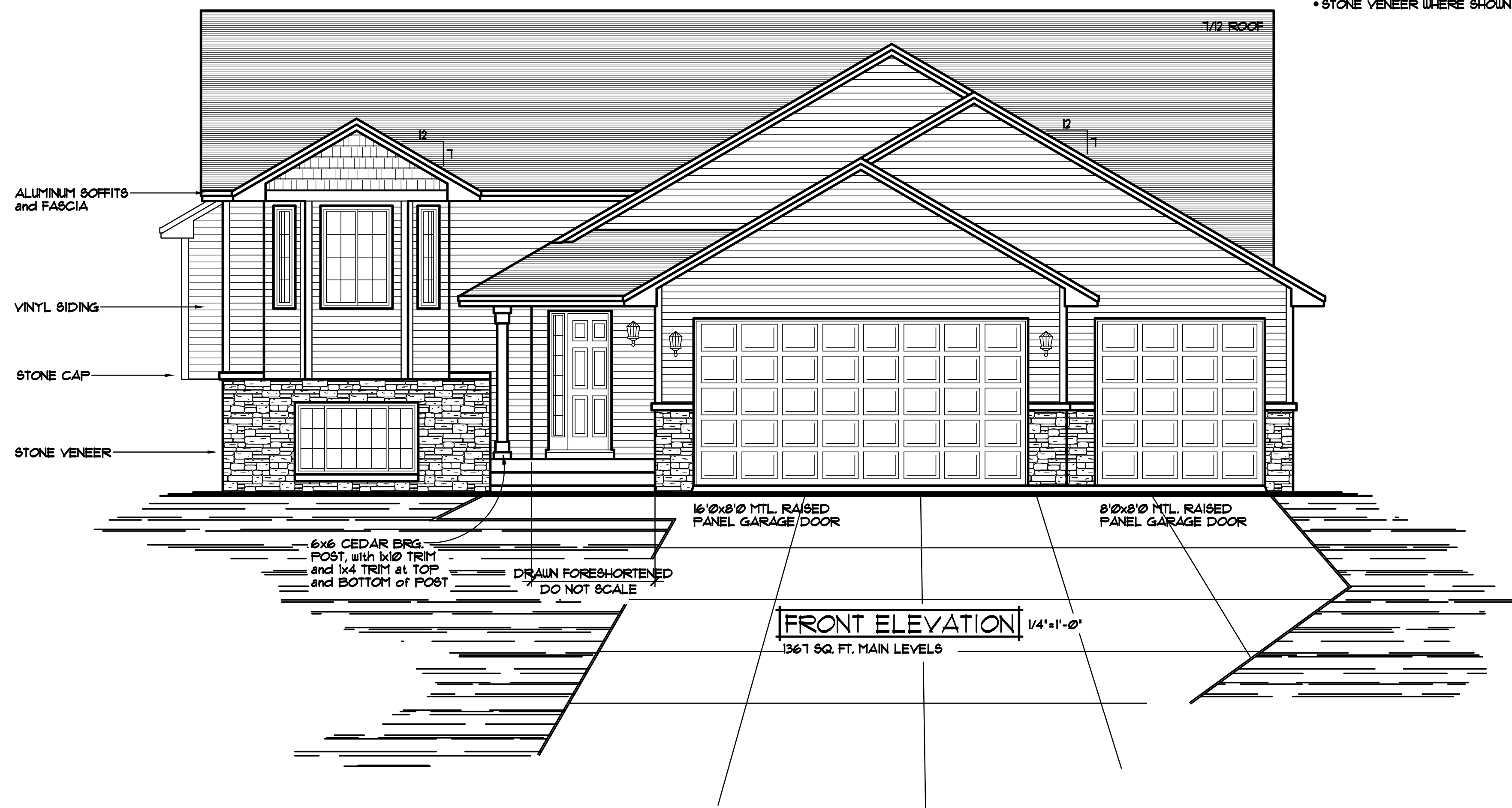


REVISIONS	BY
03019	N.F.
03289	J.R.
04312	C.C.
06010	N.F.
13090	N.F.

**SPECIAL NOTICE:**  
CROIX DESIGN and DRAFTING, INC. ACCEPTS NO RESPONSIBILITY FOR ERRORS AND/OR OMISSIONS. THESE DRAWINGS ARE DESIGN CONCEPT ONLY. EVERY EFFORT HAS BEEN MADE DESIGNING TO ACCOMMODATE THE CHINESE GENERAL CONTRACTOR. SUB-CONTRACTORS AND SUPPLIERS MUST CHECK ALL DETAILS AND DIMENSIONS AND BE RESPONSIBLE FOR ANY CHANGES OR ADJUSTMENTS REQUIRED DURING ACTUAL CONSTRUCTION. NO REPRESENTATION IS MADE OR IMPLIED FOR ACCURACY.

**COPYRIGHT NOTICE, ALL RIGHTS RESERVED**  
THESE ARCHITECTURAL PLANS AND ALL RELATED WORKS ARE PROTECTED BY UNITED STATES COPYRIGHT LAWS, AND THAT NOT BE REPRODUCED, COPIED, EITHER WHOLLY OR IN PART, IN ANY MANNER WITHOUT THE EXPRESS WRITTEN PERMISSION OF CROIX DESIGN and DRAFTING, INC. CROIX DESIGN and DRAFTING, INC.

- JELD-WEN WINDOWS SPEC'D.
- WINDOWS w/GRIDS WHERE SHOWN
- VINYL SIDING/CORNER TRIM
- ALUMINUM SOFFITS & FASCIA
- STONE VENEER WHERE SHOWN



DESIGN and DRAFTING BY:

**CROIX DESIGN and DRAFTING, Inc.**

• ARCHITECTURAL DESIGN and DRAFTING SERVICE •  
 • HOME PLAN SERVICE • CUSTOM HOMES • REMODELING •  
 • PH: (763) 757-5997 • FAX: (763) 757-4383 •  
 • WWW.CROIXDESIGN.COM •

BUILT BY:

**ELEVATE BUILDERS, LLC**

P.O. BOX 114  
FOREST LAKE, MN 55025

DRAWN	J.C.
CHECKED	G.F.
DATE:	10/31/2013
SCALE:	AS NOTED
CADD FILE #	13182

THE:  
**SAVANNAH MODEL**

© COPYRIGHT 1998-2013 NOTICE, ALL RIGHTS RESERVED  
CROIX DESIGN and DRAFTING, INC.

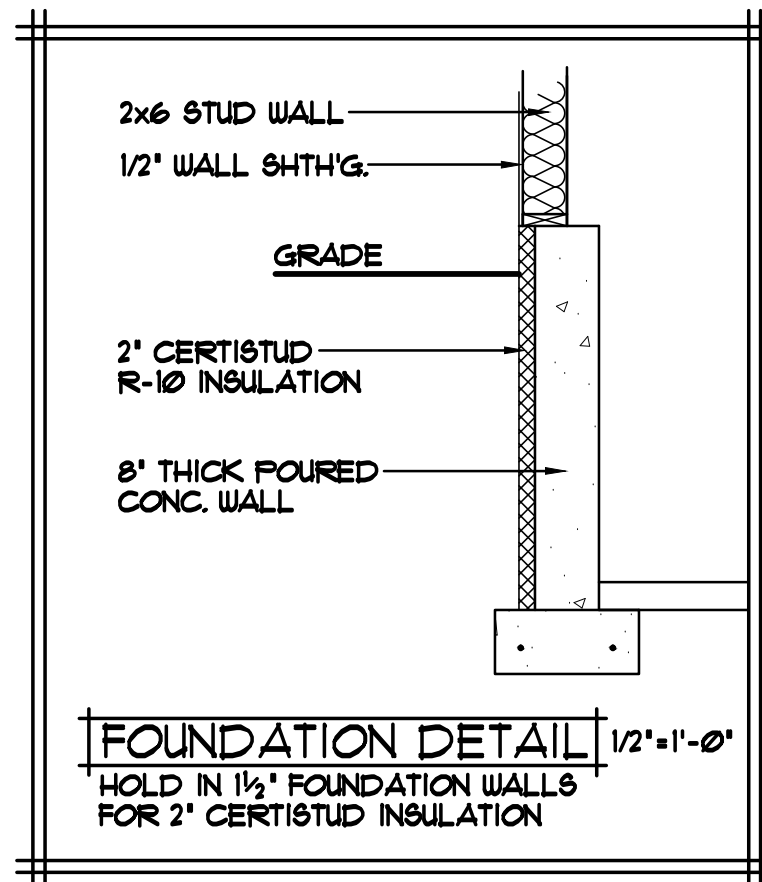
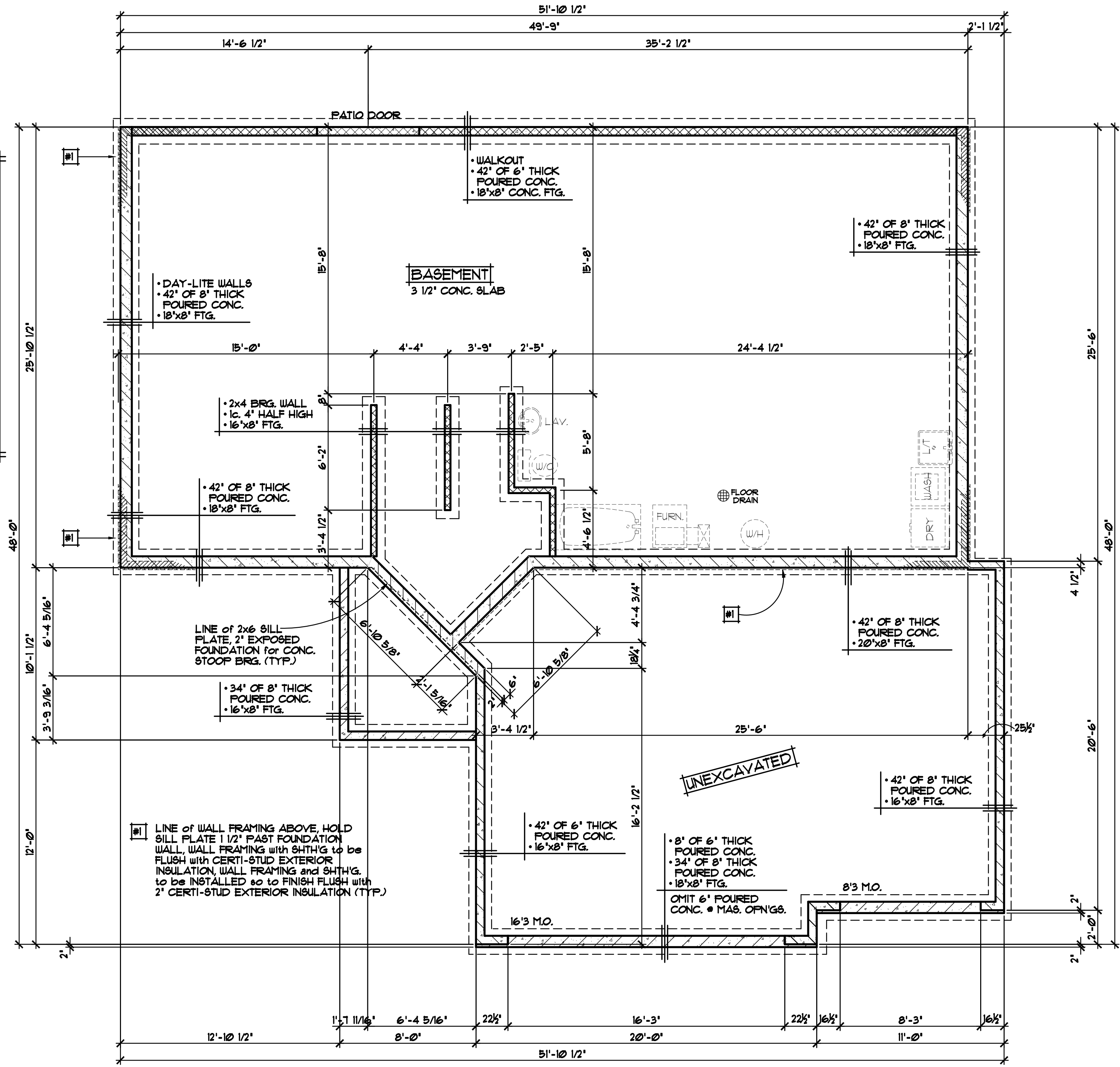
REVISIONS
XXXXXX 0000 BY:XX
XXXXXX 0000 BY:XX

**SPECIAL NOTICE:**  
CROIX DESIGN AND DRAFTING, INC. ACCEPTS NO RESPONSIBILITY FOR ERRORS AND/OR OMISSIONS. THESE DRAWINGS ARE DESIGN CONCEPT ONLY. EVERY EFFORT HAS BEEN MADE TO PREVENT ERRORS, BUT THE USER MUST VERIFY ALL DIMENSIONS AND CONDITIONS BEFORE CONSTRUCTION. THE USER SHALL BE RESPONSIBLE FOR ANY CHANGES OR ADJUSTMENTS REQUIRED DURING CONSTRUCTION. NO REPRESENTATION IS MADE OR IMPLIED FOR ACCURACY.

**CROIX DESIGN and DRAFTING, Inc.**  
• PH: (763) 757-5997 • FAX: (763) 757-4383 • ANDOVER, MINNESOTA

BUILT BY:  
**ELEVATE BUILDERS, LLC**

SHEET  
**2**  
OF 5  
CADD FILE #  
13182



FOUNDATION PLAN HAS BEEN DRAWN  
TO ALLOW FOR THE INSTALLATION  
OF 2" CERTI-STUD EXTERIOR INSULATION

REVISIONS
XXXXXX
0000
BY:XX
XXXXXX
0000
BY:XX

**SPECIAL NOTICE:**  
 CROIX DESIGN AND DRAFTING, INC. ACCEPTS NO RESPONSIBILITY FOR ERRORS AND/OR OMISSIONS. THESE DRAWINGS ARE DESIGN CONCEPT ONLY. EVERY EFFORT HAS BEEN MADE TO PREPARE ACCURATE DRAWINGS, BUT THE USER SHALL BE RESPONSIBLE FOR VERIFYING ALL DIMENSIONS AND BEING RESPONSIBLE FOR ANY CHANGES OR ADJUSTMENTS REQUIRED DURING ACTUAL CONSTRUCTION. NO REPRESENTATION IS MADE OR IMPLIED FOR ACCURACY.

**CROIX DESIGN and DRAFTING, Inc.**  
 • PH: (763) 757-5997 FAX: (763) 757-4383 ANDOVER, MINNESOTA

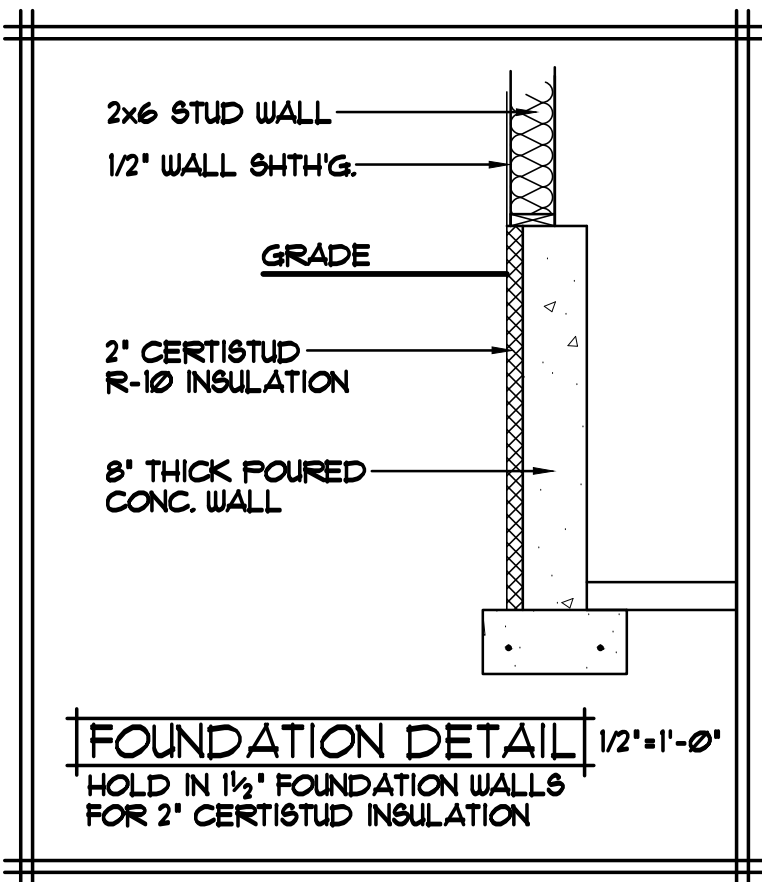
**ELEVATE BUILDERS, LLC**  
 BUILT BY:

SHEET  
**3**  
 of 5  
 CADD FILE #  
 13182

NOTE III  
 FOUNDATION HAS BEEN DRAWN TO ALLOW FOR EXT. APPLICATION OF 2" CERTISTUD INSULATION (SEE DETAIL THIS SHT.)

NOTE III  
 STEP FOOTING, POURED CONC. FOUNDATION WALL and 2x6 KNEE AS NEEDED PER GRADE, FIELD VERIFY

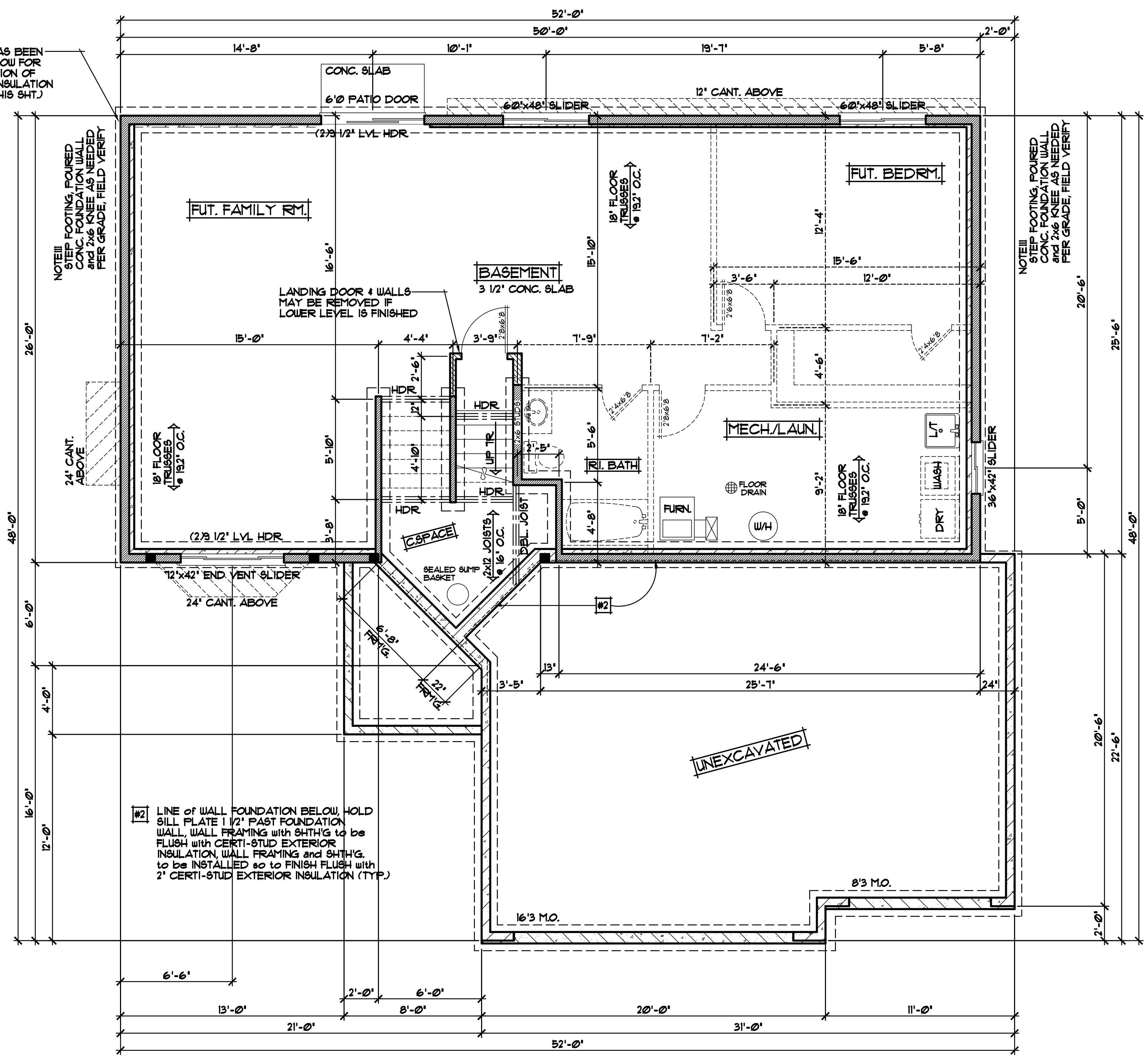
NOTE III  
 STEP FOOTING, POURED CONC. FOUNDATION WALL and 2x6 KNEE AS NEEDED PER GRADE, FIELD VERIFY



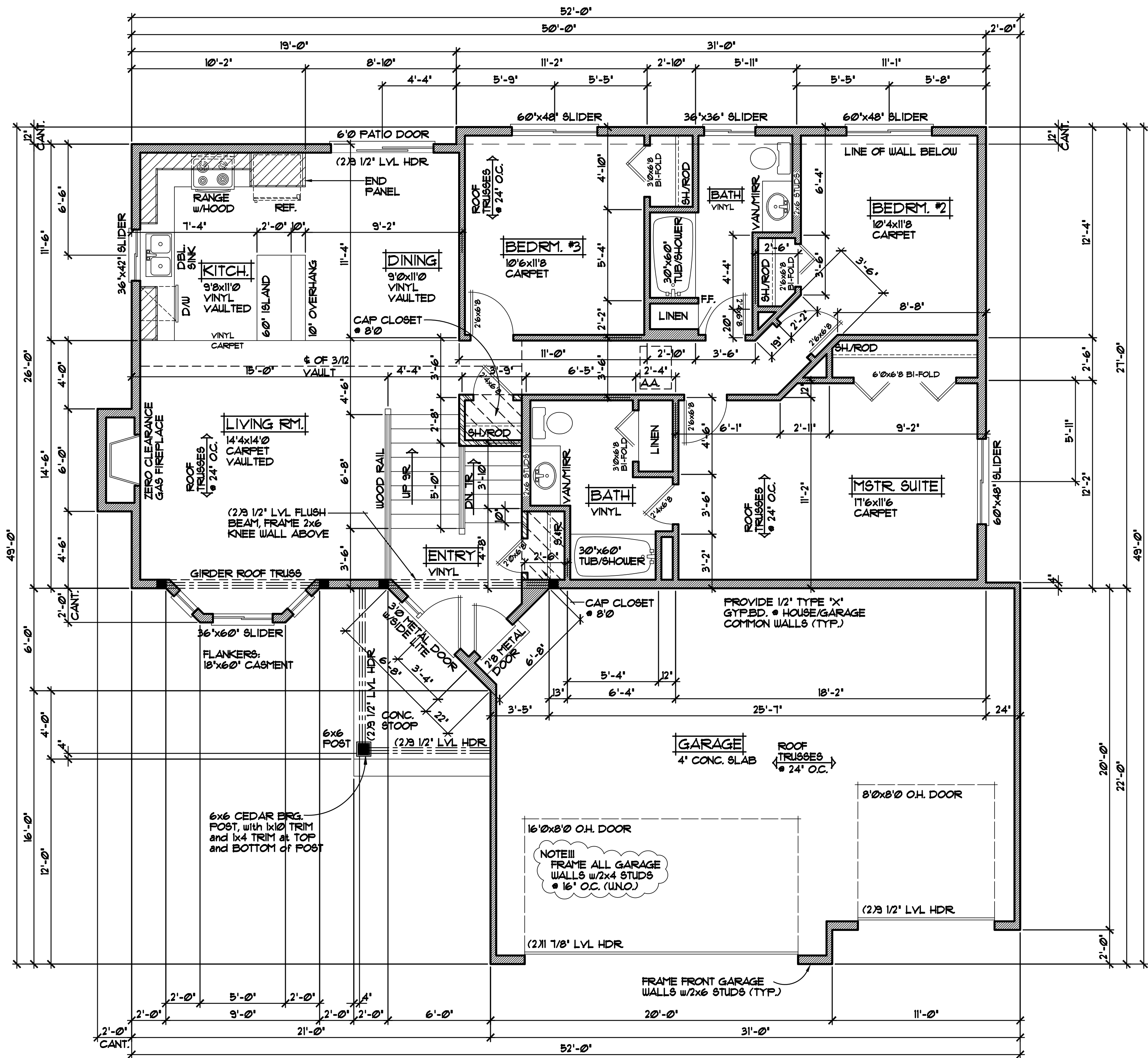
NOTE III  
 VERIFY ALL MECHANICAL EQUIPMENT LOCATIONS. LOCATIONS ON PLAN ARE REPRESENTATION ONLY

NOTE III  
 SOLID CAP BLOCK \* TOP COURSE \* GROUT SOLID WERE ANCHOR BOLTS ARE USED \* BRICK LEDGES

#2 LINE OF WALL FOUNDATION BELOW, HOLD SILL PLATE 1/2" PAST FOUNDATION WALL, WALL FRAMING WITH SH4TH'G TO BE FLUSH WITH CERTI-STUD EXTERIOR INSULATION, WALL FRAMING AND SH4TH'G. TO BE INSTALLED SO TO FINISH FLUSH WITH 2" CERTI-STUD EXTERIOR INSULATION (TYP.)



NOTE III  
 JELD-WEN WINDOW SIZES SPEC'D. VERIFY ALL DOOR AND WINDOW ROUGH OPENINGS WITH SUPPLIER



**MAIN LEVEL FLOOR PLAN** 1/4" = 1'-0"  
1367 SQ.FT.

NOTE III  
JELD-WEN WINDOW SIZES SPEC'D.  
VERIFY ALL DOOR AND WINDOW  
ROUGH OPENINGS WITH SUPPLIER

REVISIONS
XXXXXX 0000 BY:XX
XXXXXX 0000 BY:XX

**SPECIAL NOTICE:**  
CROIX DESIGN AND DRAFTING, INC. ACCEPTS NO RESPONSIBILITY FOR ERRORS AND/OR OMISSIONS. THESE DRAWINGS ARE DESIGN CONCEPT ONLY. EVERY EFFORT HAS BEEN MADE TO PREVENT ERRORS, BUT THE USER MUST VERIFY ALL DIMENSIONS AND CONDITIONS BEFORE CONSTRUCTION. THE USER SHALL BE RESPONSIBLE FOR ANY CHANGES OR ADJUSTMENTS REQUIRED DURING CONSTRUCTION. NO REPRESENTATION IS MADE OR IMPLIED FOR ACCURACY.

**CROIX DESIGN and DRAFTING, Inc.**  
PH: (763) 757-5997 FAX: (763) 757-4383 ANDOVER, MINNESOTA

BUILT BY:  
**ELEVATE BUILDERS, LLC**

SHEET  
**4**  
of 5  
CADD FILE #  
13182