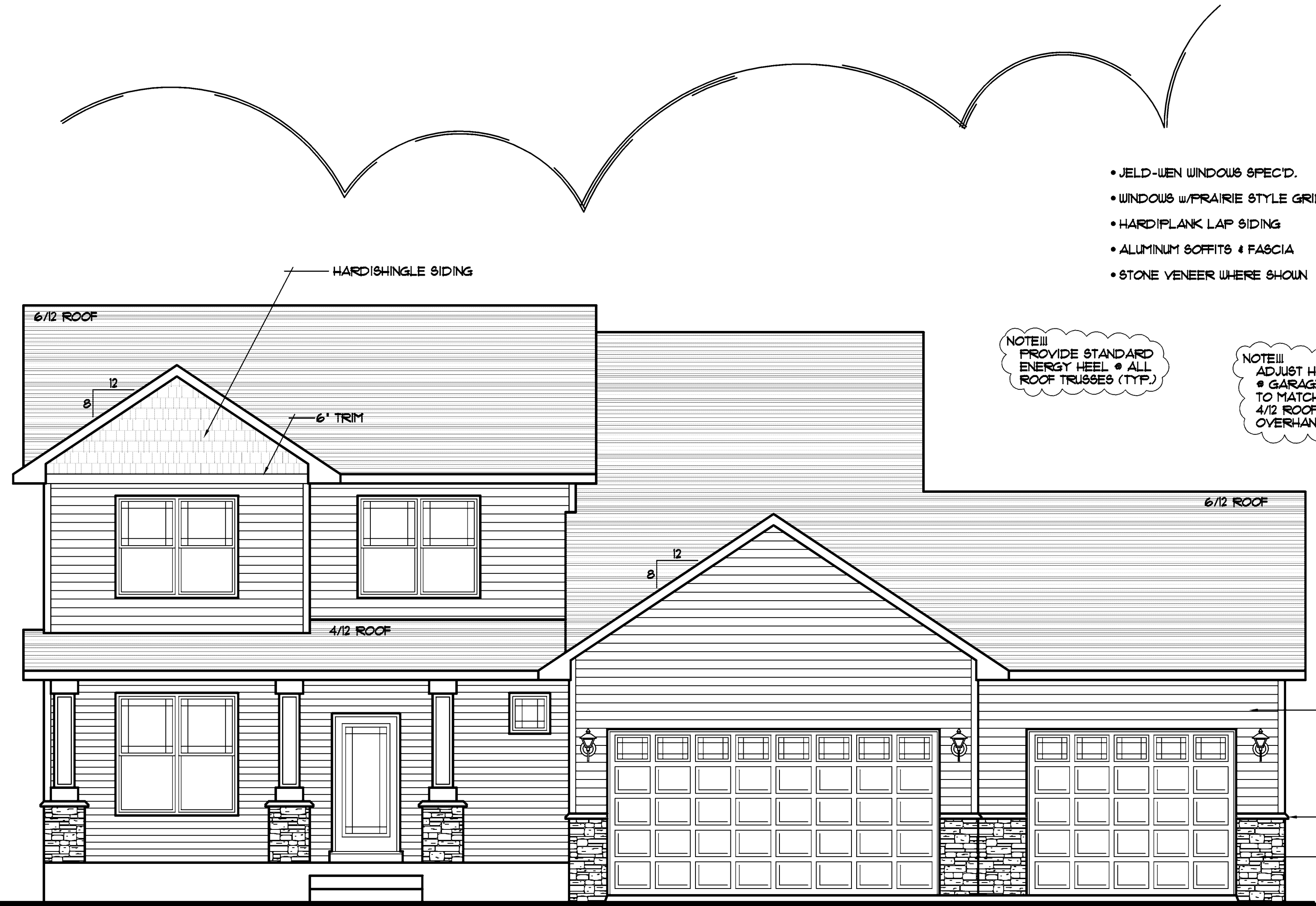


REVISIONS	BY
XXXXX	XX

SPECIAL NOTICE:
CROIX DESIGN AND DRAFTING, INC. ACCEPTS NO RESPONSIBILITY FOR ERRORS AND/OR OMISSIONS. THESE DRAWINGS ARE DESIGN CONCEPT ONLY. EVERY EFFORT HAS BEEN MADE TO DESIGN ACCURATELY. THE OWNER, GENERAL CONTRACTOR, SUB-CONTRACTORS AND SUPPLIERS MUST CHECK ALL DETAILS AND DIMENSIONS AND BE RESPONSIBLE FOR ANY CHANGES OR ADJUSTMENTS REQUIRED DURING ACTUAL CONSTRUCTION. NO REPRESENTATION IS MADE OR IMPLIED FOR ACCURACY.

© COPYRIGHT NOTICE, ALL RIGHTS RESERVED
THESE ARCHITECTURAL PLANS AND ALL RELATED WORKS ARE PROTECTED BY UNITED STATES COPYRIGHT LAWS, AND MAY NOT BE REPRODUCED, COPIED, OR TRANSMITTED IN ANY MANNER WITHOUT THE EXPRESS WRITTEN PERMISSION OF CROIX DESIGN AND DRAFTING, INC. CROIX DESIGN AND DRAFTING, INC.

- JELD-WEN WINDOWS SPEC'D.
- WINDOWS w/PRAIRIE STYLE GRIDS WHERE SHOWN
- HARDIPLANK LAP SIDING
- ALUMINUM SOFFITS & FASCIA
- STONE VENEER WHERE SHOWN



NOTE!!!
PROVIDE STANDARD ENERGY HEEL @ ALL ROOF TRUSSES (TYP.)

NOTE!!!
ADJUST HEEL HEIGHT @ GARAGE ROOF TRUSSES TO MATCH FASCIA WITH 4/12 ROOF TRUSSES w/18' OVERHANG (TYP.)

- HARDIPLANK LAP SIDING
- STONE CAP
- STONE VENEER

16'0"x8'0" METAL RAISED PANEL GARAGE DOOR w/WINDOWS

10'0"x8'0" METAL RAISED PANEL GARAGE DOOR w/WINDOWS

FRONT ELEVATION 1/4"=1'-0"

1132 SQ. FT. FIRST FLOOR
1158 SQ. FT. SECOND FLOOR
2290 SQ. FT. TOTAL

THE:
MACKIN/REINSBERG RESIDENCE

© COPYRIGHT 2013 NOTICE, ALL RIGHTS RESERVED
CROIX DESIGN AND DRAFTING, INC.

DESIGN AND DRAFTING BY:

CROIX DESIGN and DRAFTING, Inc.

• ARCHITECTURAL DESIGN and DRAFTING SERVICE •
• HOME PLAN SERVICE • CUSTOM HOMES • REMODELING •
• PH: (763) 757-5997 • FAX: (763) 757-4383 •
• WWW.CROIXDESIGN.COM •

BUILT BY:

ELEVATE BUILDERS, LLC

P.O. BOX 114
FOREST LAKE, MN 55025

DRAWN	XX
CHECKED	XX
DATE	12/23/2013
SCALE	AS NOTED
CADD FILE #	13112

REVISIONS
XXXXXX
0000
BY:XX
XXXXXX
0000
BY:XX

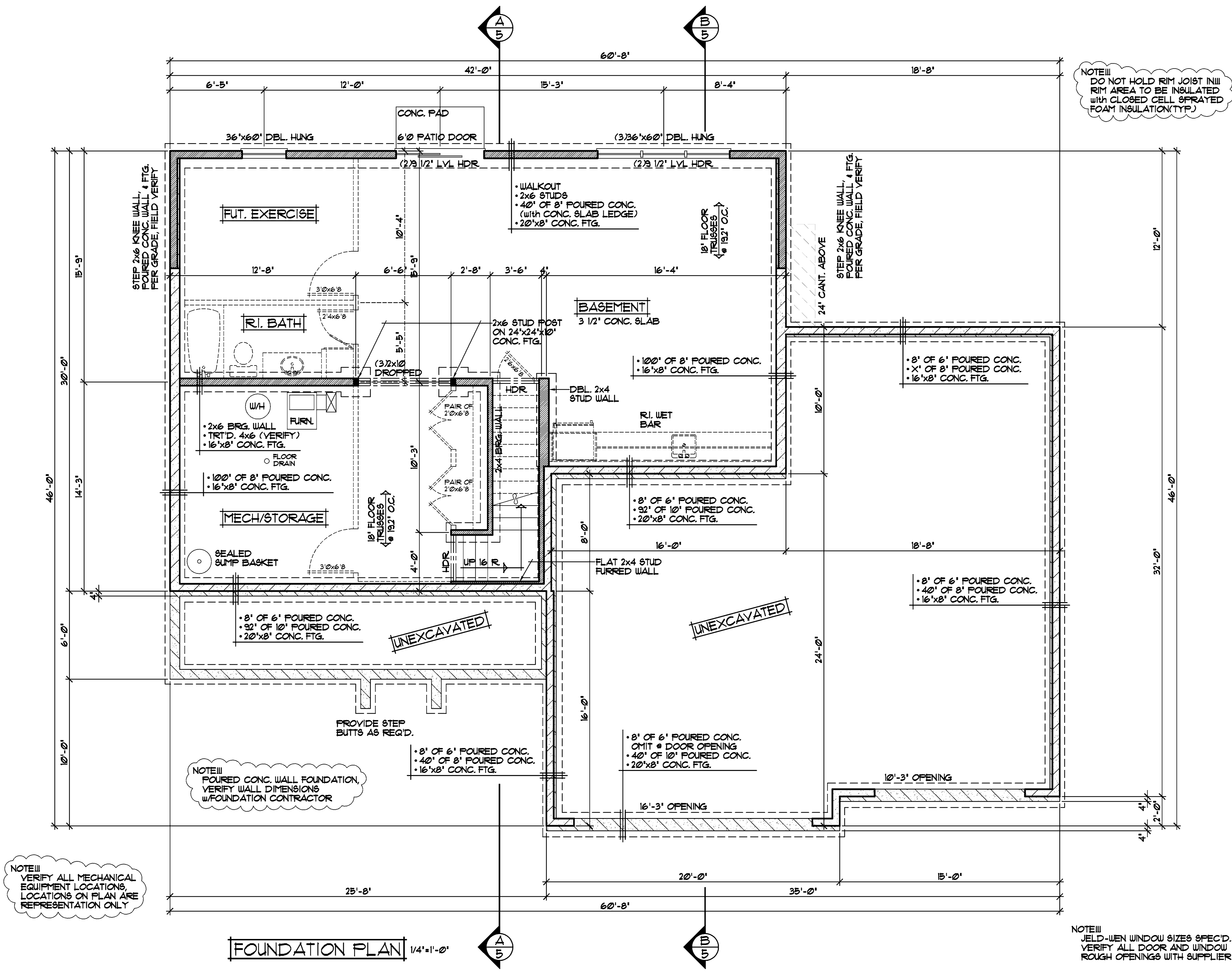
NOTE III
DO NOT HOLD RIM JOIST IN RIM AREA TO BE INSULATED WITH CLOSED CELL SPRAYED FOAM INSULATION (TYP.)

SPECIAL NOTICE:
CROIX DESIGN AND DRAFTING, INC. ACCEPTS NO RESPONSIBILITY FOR ERRORS AND/OR OMISSIONS IN THESE DRAWINGS. EVERY EFFORT HAS BEEN MADE TO PREPARE THESE DRAWINGS ACCURATELY. HOWEVER, THE USER SHALL BE RESPONSIBLE FOR VERIFYING ALL DIMENSIONS AND CONDITIONS IN THE FIELD. THE USER SHALL BE RESPONSIBLE FOR ANY CHANGES OR ADJUSTMENTS REQUIRED DURING CONSTRUCTION. NO REPRESENTATION IS MADE OR IMPLIED FOR ACCURACY.

CROIX DESIGN and DRAFTING, Inc.
PH: (763) 757-5997 FAX: (763) 757-4383 ANDOVER, MINNESOTA

BUILT BY:
ELEVATE BUILDERS, LLC

SHEET
3
of 6
CADD FILE #
13112



NOTE III
VERIFY ALL MECHANICAL EQUIPMENT LOCATIONS. LOCATIONS ON PLAN ARE REPRESENTATION ONLY

NOTE III
POURED CONC. WALL FOUNDATION. VERIFY WALL DIMENSIONS W/ FOUNDATION CONTRACTOR

• 8" OF 6" POURED CONC.
• 40" OF 8" POURED CONC.
• 16"x8" CONC. FTG.

NOTE III
JELD-WEN WINDOW SIZES SPEC'D. VERIFY ALL DOOR AND WINDOW ROUGH OPENINGS WITH SUPPLIER

FOUNDATION PLAN 1/4"=1'-0"

REVISIONS
XXXXXX 0000 BY:XX
XXXXXX 0000 BY:XX

SPECIAL NOTICE:
CROIX DESIGN AND DRAFTING, INC. ACCEPTS NO RESPONSIBILITY FOR ERRORS AND/OR OMISSIONS IN THESE DRAWINGS. A DESIGN CONCEPT ONLY. EVERY EFFORT HAS BEEN MADE TO PREPARE THESE DRAWINGS TO THE BEST OF OUR ABILITY. THE CLIENT IS RESPONSIBLE FOR VERIFYING ALL DIMENSIONS AND BEING RESPONSIBLE FOR ANY CHANGES OR ADJUSTMENTS REQUIRED DURING CONSTRUCTION. NO REPRESENTATION IS MADE OR IMPLIED FOR ACCURACY.

CROIX DESIGN and DRAFTING, Inc.
PH: (763) 757-5997 FAX: (763) 757-4383 ANDOVER, MINNESOTA

ELEVATE BUILDERS, LLC
BUILT BY:

SHEET
4
of 6
CADD FILE #
13112

NOTE III
15" DEEP UPPER CABINETS • KITCH.

NOTE III
DO NOT HOLD RIM JOIST IN RIM AREA TO BE INSULATED WITH CLOSED CELL SPRAYED FOAM INSULATION (TYP.)

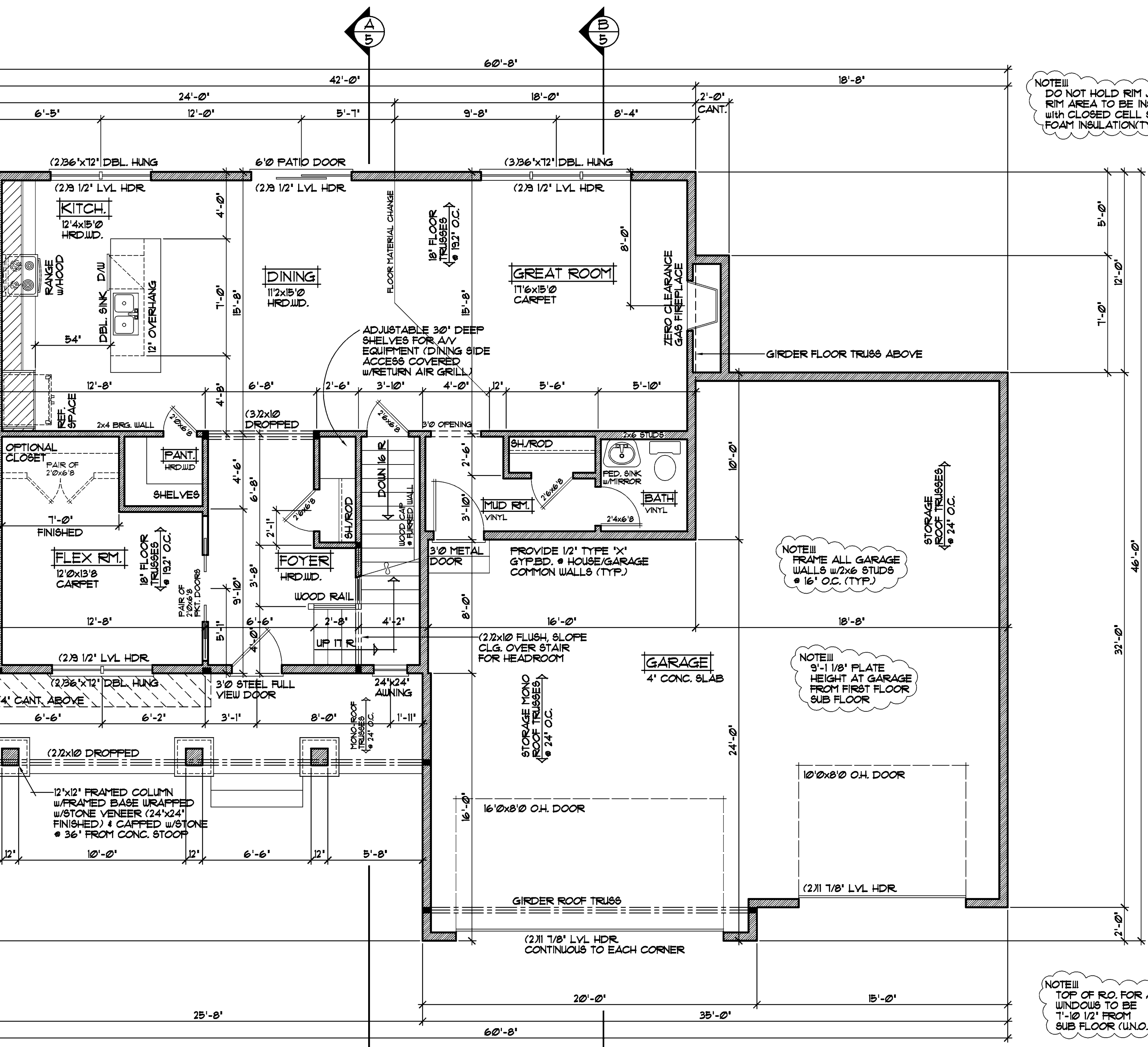
NOTE III
FRAME ALL GARAGE WALLS w/2x6 STUDS @ 16" O.C. (TYP.)

NOTE III
9'-1 1/8" PLATE HEIGHT AT GARAGE FROM FIRST FLOOR SUB FLOOR

NOTE III
9'-1 1/8" PLATE HEIGHT • ENTIRE FIRST FLOOR (TYP.)

NOTE III
TOP OF R.O. FOR ALL WINDOWS TO BE 7'-10 1/2" FROM SUB FLOOR (U.N.O.)

NOTE III
JELD-WEN WINDOW SIZES SPEC'D. VERIFY ALL DOOR AND WINDOW ROUGH OPENINGS WITH SUPPLIER



FIRST FLOOR PLAN 1/4"=1'-0"
1132 SQ.FT.

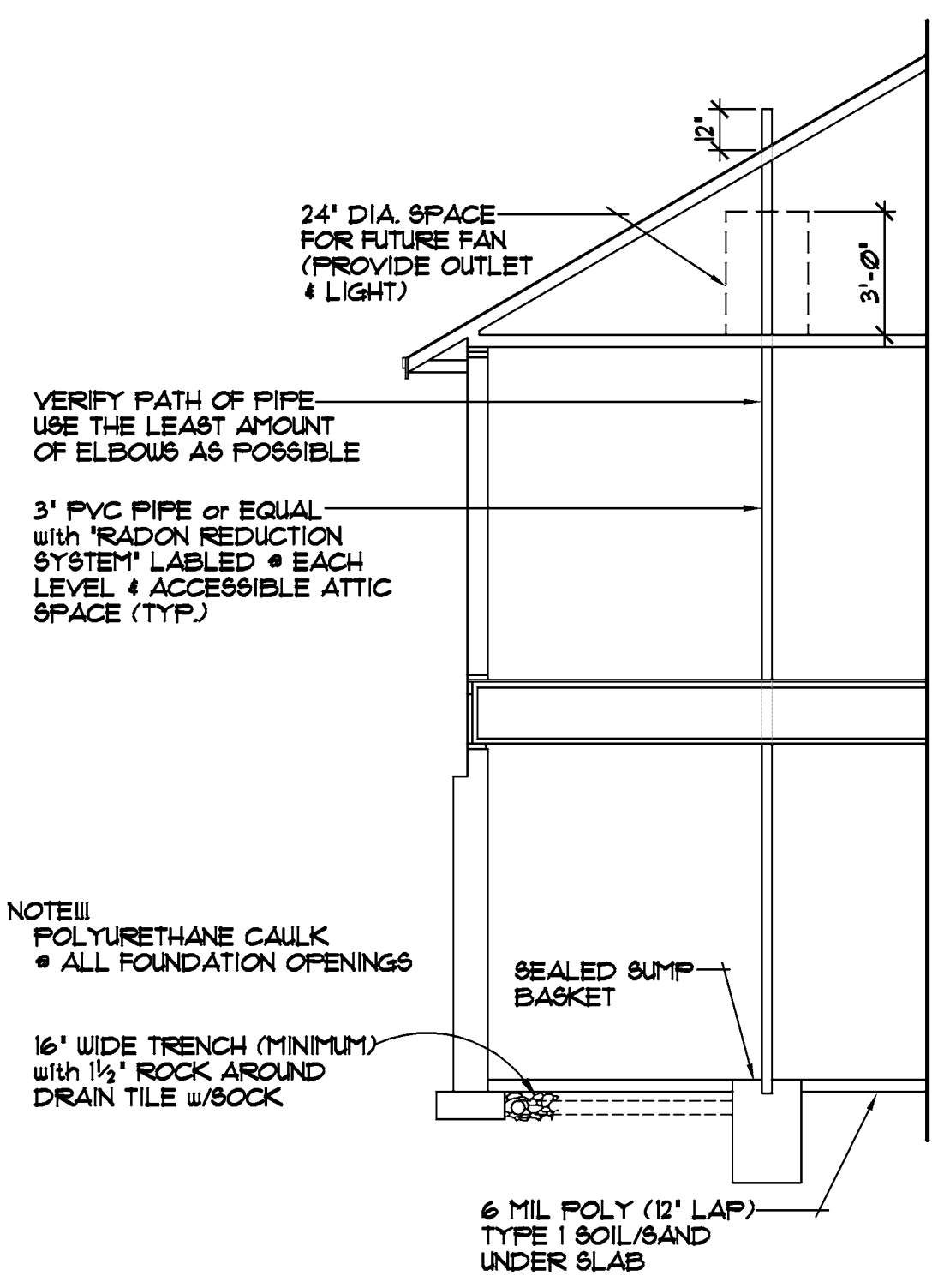
REVISIONS
XXXXXX 0000 BY:XX
XXXXXX 0000 BY:XX

SPECIAL NOTICE:
CROIX DESIGN AND DRAFTING, INC. ACCEPTS NO RESPONSIBILITY FOR ERRORS AND/OR OMISSIONS IN THESE DRAWINGS. A DESIGN CONCEPT ONLY. EVERY EFFORT HAS BEEN MADE TO PREPARE THESE DRAWINGS ACCURATELY. HOWEVER, THE USER OF THESE DRAWINGS SHALL BE RESPONSIBLE FOR VERIFYING ALL DIMENSIONS AND CONDITIONS BEFORE CONSTRUCTION. THE USER SHALL BE RESPONSIBLE FOR ANY CHANGES OR ADJUSTMENTS REQUIRED DURING CONSTRUCTION. NO REPRESENTATION IS MADE OR IMPLIED FOR ACCURACY.

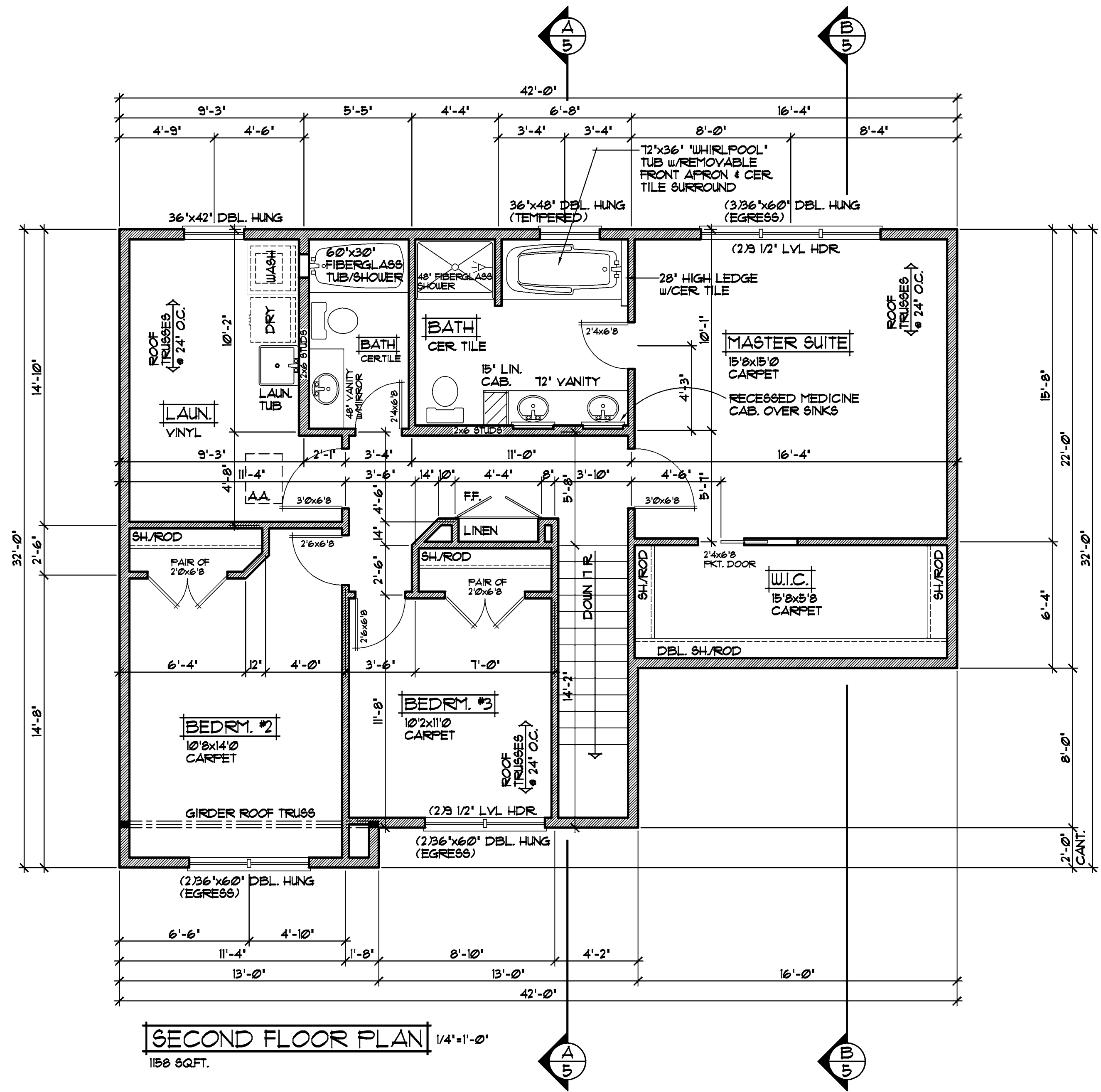
CROIX DESIGN and DRAFTING, Inc.
• PH: (763) 757-5997 FAX: (763) 757-4383 ANDOVER, MINNESOTA

ELEVATE BUILDERS, LLC
BUILT BY:

SHEET
5
of 6
CADD FILE #
13112



ALTERNATE METHOD FOR PASSIVE RADON MITIGATION SYSTEM



SECOND FLOOR PLAN 1/4"=1'-0"
1158 SQ.FT.

NOTE III
JELD-WEN WINDOW SIZES SPEC'D.
VERIFY ALL DOOR AND WINDOW
ROUGH OPENINGS WITH SUPPLIER

PLAN REVISED 12-23-2013 NF.