

REVISIONS	BY
00221	S.E.
01018	R.M.
06124	W.O.
14130	J.C.

**SPECIAL NOTICE:**  
CROIX DESIGN AND DRAFTING, INC. ACCEPTS NO RESPONSIBILITY FOR ERRORS AND/OR OMISSIONS. THESE DRAWINGS ARE DESIGN CONCEPT ONLY. EVERY EFFORT HAS BEEN MADE TO DESIGN TO MEET THE INTENT OF THE CLIENT. THE CLIENT SHALL VERIFY ALL DIMENSIONS AND CONDITIONS WITH THE GENERAL CONTRACTOR, SUB-CONTRACTORS, AND SUPPLIERS. ALL DETAILS AND DIMENSIONS REQUIRED DURING ACTUAL CONSTRUCTION AND ADJUSTMENTS REQUIRED DURING ACTUAL CONSTRUCTION NO REPRESENTATION IS MADE OR IMPLIED FOR ACCURACY.

**COPYRIGHT NOTICE, ALL RIGHTS RESERVED**  
THESE ARCHITECTURAL PLANS AND ALL RELATED WORKS ARE PROTECTED BY UNITED STATES COPYRIGHT LAWS, AND THAT NOT BE REPRODUCED, COPIED, OR TRANSMITTED IN ANY MANNER WITHOUT THE EXPRESS WRITTEN PERMISSION OF CROIX DESIGN AND DRAFTING, INC.

**NOTE III**  
8'-1 1/8" PLATE HEIGHT • ENTIRE MAIN LEVEL (UNLO.)

**NOTE III**  
PROVIDE STANDARD ENERGY HEEL • ALL ROOF TRUSSES (TYP.)

- ANDERSEN 100 SERIES WINDOWS SPEC'D
- ALUMINUM SOFFITS/FASCIA
- VINYL SIDING/CORNER TRIM
- VINYL SHAKE SIDING WHERE SHOWN
- WINDOW GRIDS AS SHOWN ON ALL WINDOWS
- ASPHALT SHINGLES
- STONE VENEER WHERE SHOWN



**FRONT ELEVATION** 1/4"=1'-0"  
 980 SQFT. MAIN LEVEL  
 392 SQFT. BONUS ROOM  
 1372 SQFT. TOTAL

THE  
**KIRSTEN**

© COPYRIGHT 2000-2014 NOTICE, ALL RIGHTS RESERVED CROIX DESIGN and DRAFTING, INC.

DESIGN and DRAFTING BY:

**CROIX DESIGN and DRAFTING, Inc.**

ARCHITECTURAL DESIGN and DRAFTING SERVICE •  
 HOME PLAN SERVICE • CUSTOM HOMES • REMODELING •  
 • PH: (763) 757-5997 • FAX: (763) 757-4383 •  
 • WWW.CROIXDESIGN.COM •

**ELEVATE BUILDERS, LLC**

P.O. BOX 114  
 FOREST LAKE, MN 55025

DRAWN R.D.
CHECKED S.E.
DATE 10/3/2014
SCALE AS NOTED
CADD FILE # 14210

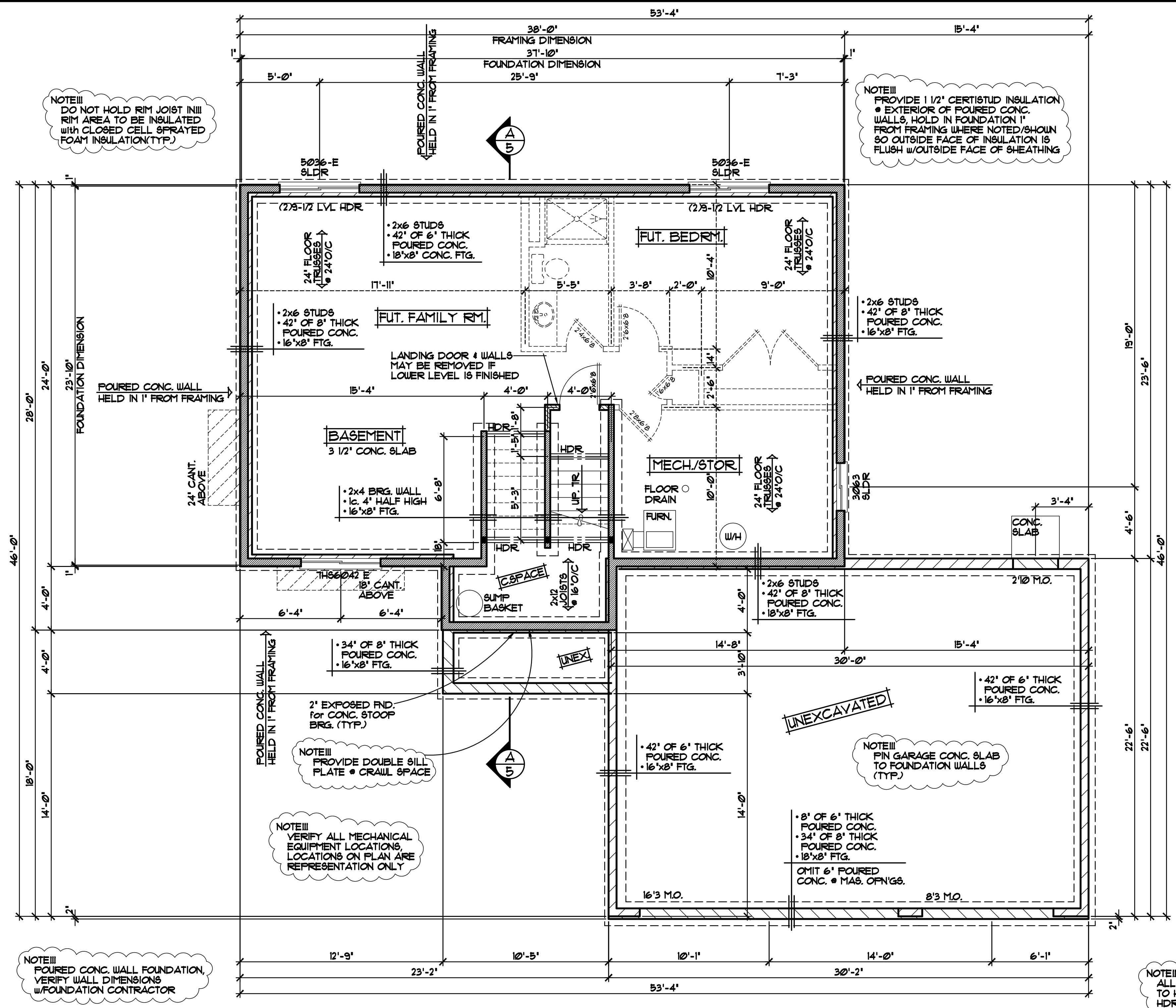
REVISIONS	
XXXXXX	BY:XX
0000	BY:XX
XXXXXX	BY:XX
0000	BY:XX

**SPECIAL NOTICE:**  
CROIX DESIGN AND DRAFTING, INC. ACCEPTS NO RESPONSIBILITY FOR ERRORS AND/OR OMISSIONS. THESE DRAWINGS ARE DESIGN CONCEPT ONLY. EVERY EFFORT HAS BEEN MADE TO PREPARE THESE DRAWINGS ACCURATELY. HOWEVER, THE USER SHALL BE RESPONSIBLE FOR VERIFYING ALL DIMENSIONS AND CONDITIONS ON THE JOB. THE USER SHALL BE RESPONSIBLE FOR ANY CHANGES OR ADJUSTMENTS REQUIRED DURING CONSTRUCTION. NO REPRESENTATION IS MADE OR IMPLIED FOR ACCURACY.

**CROIX DESIGN and DRAFTING, Inc.**  
PH: (763) 757-5997 FAX: (763) 757-4383 ANDOVER, MINNESOTA

BUILT BY:  
**ELEVATE BUILDERS, LLC**

SHEET  
**3**  
of 7  
CADD FILE #  
142710



NOTE III  
DO NOT HOLD RIM JOIST IN RIM AREA TO BE INSULATED WITH CLOSED CELL SPRAYED FOAM INSULATION (TYP.)

NOTE III  
PROVIDE 1 1/2" CERTISTUD INSULATION  
• EXTERIOR OF POURED CONC. WALLS, HOLD IN FOUNDATION 1" FROM FRAMING WHERE NOTED/SHOWN SO OUTSIDE FACE OF INSULATION IS FLUSH W/OUTSIDE FACE OF SHEATHING

NOTE III  
PROVIDE DOUBLE SILL PLATE • CRAWL SPACE

NOTE III  
VERIFY ALL MECHANICAL EQUIPMENT LOCATIONS, LOCATIONS ON PLAN ARE REPRESENTATION ONLY

NOTE III  
POURED CONC. WALL FOUNDATION, VERIFY WALL DIMENSIONS W/FOUNDATION CONTRACTOR

NOTE III  
FIN GARAGE CONC. SLAB TO FOUNDATION WALLS (TYP.)

NOTE III  
ALL WDW/DOOR OPENINGS TO HAVE (2)2x10 #2 GRADE HDR or BETTER (UNO.)

**FOUNDATION PLAN** 1/4"=1'-0"  
UNFINISHED

NOTE III  
ANDERSEN 100 SERIES WINDOW SIZES SPEC'D VERIFY ALL DOOR AND WINDOW ROUGH OPENINGS WITH SUPPLIER

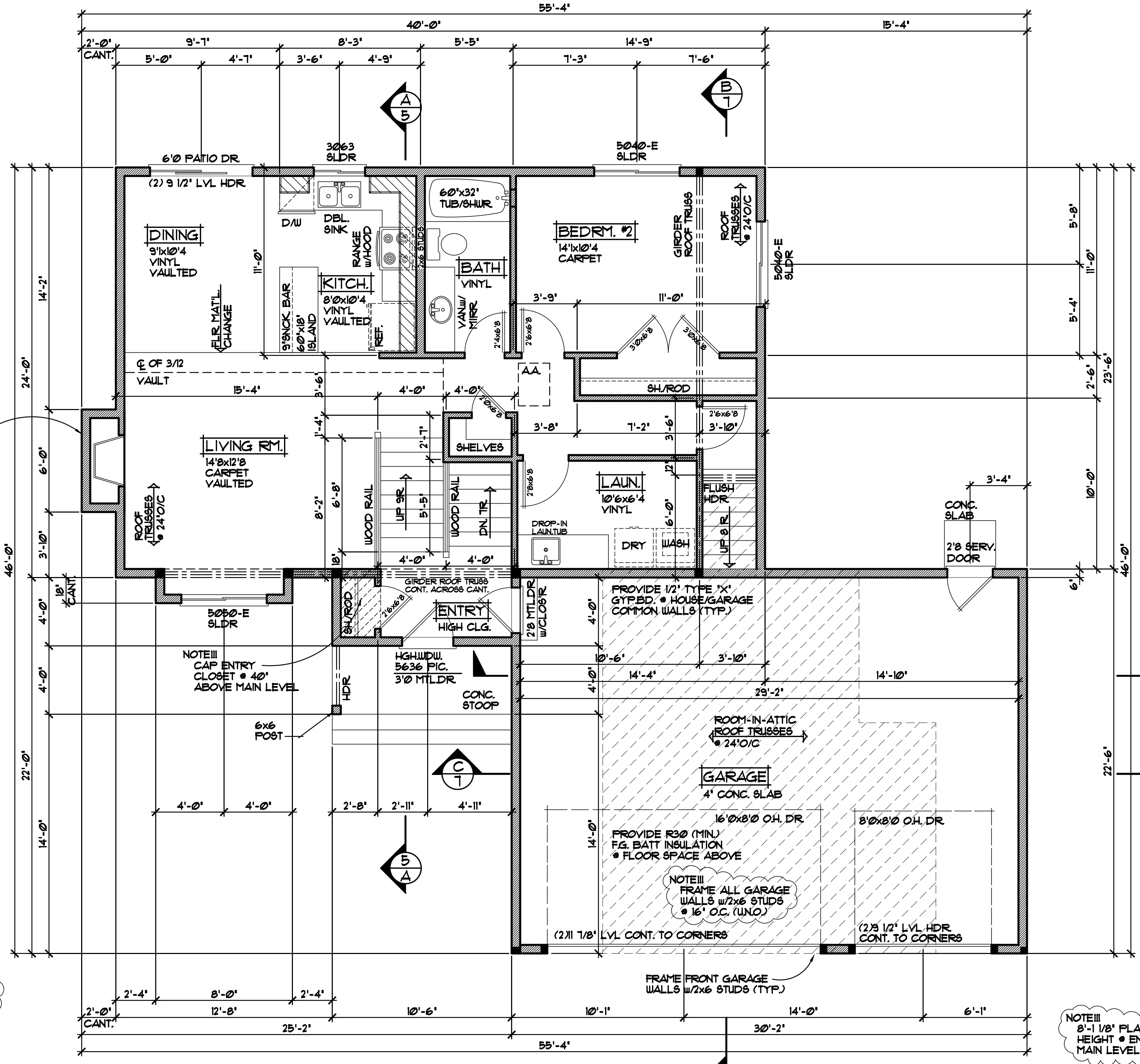
REVISIONS	
XXXXXX	0000
BY:XX	
XXXXXX	0000
BY:XX	

**SPECIAL NOTICE:**  
 CROIX DESIGN AND DRAFTING, INC. ACCEPTS NO RESPONSIBILITY FOR ERRORS AND/OR OMISSIONS. THESE DRAWINGS ARE DESIGN CONCEPT ONLY. EVERY EFFORT HAS BEEN MADE TO PREPARE THESE DRAWINGS ACCURATELY. THE USER SHALL BE RESPONSIBLE FOR VERIFYING ALL DIMENSIONS AND BEING RESPONSIBLE FOR ANY CHANGES OR ADJUSTMENTS REQUIRED DURING CONSTRUCTION. NO REPRESENTATION IS MADE OR IMPLIED FOR ACCURACY.

**CROIX DESIGN and DRAFTING, Inc.**  
 •PH: (763) 757-5997 FAX: (763) 757-4383 ANDOVER, MINNESOTA •

BUILT BY:  
**ELEVATE BUILDERS, LLC**

SHEET  
**4**  
 of 7  
 CADD FILE #  
 142710



ZERO CLEARANCE GAS FIREPLACE (VERIFY HEARTH & SURROUND)

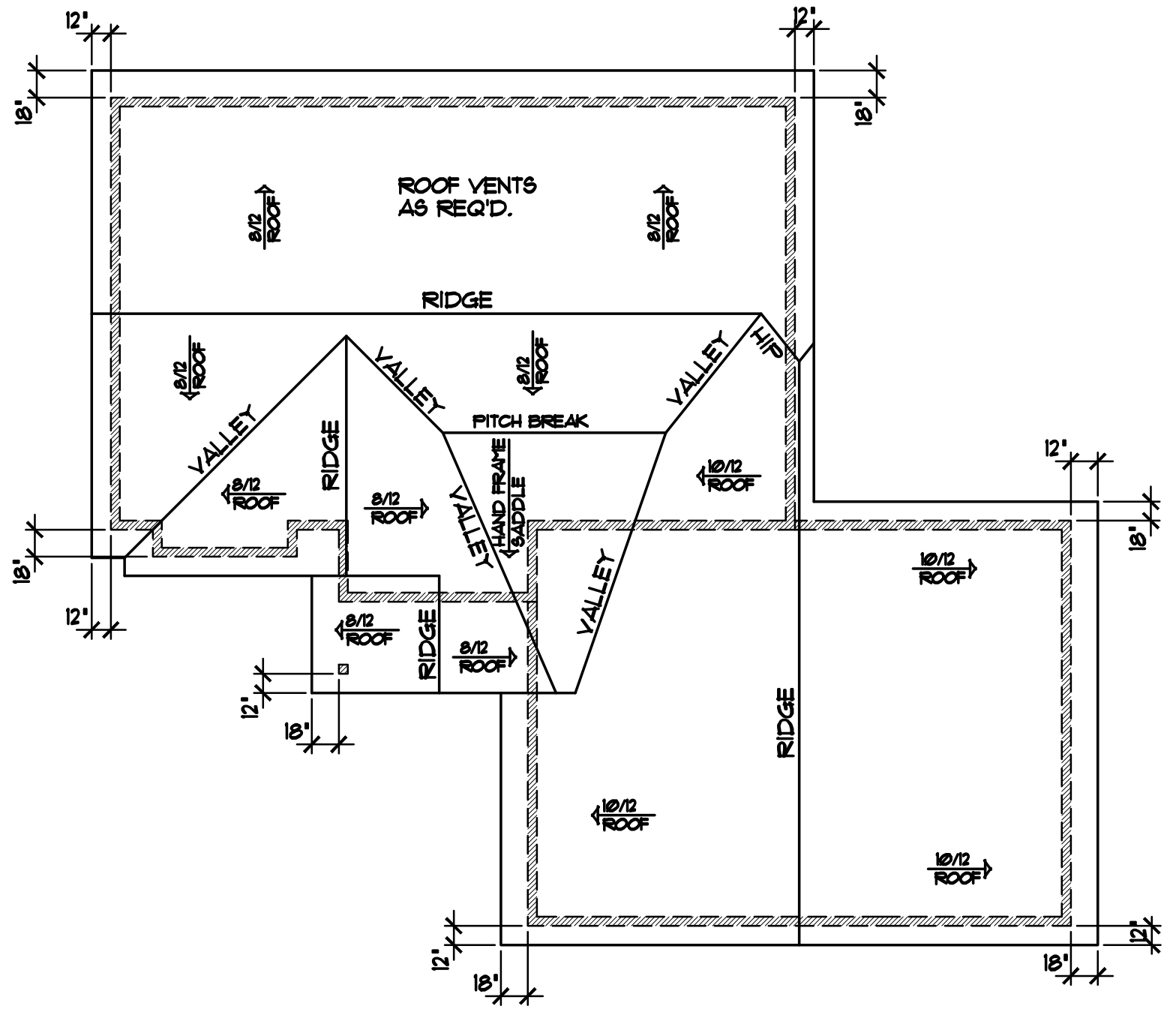
NOTE III  
 ALL WDW/DOOR OPENINGS TO HAVE (2) 2x10 #2 GRADE HDR OR BETTER (UNO.)

NOTE III  
 DO NOT HOLD RIM JOIST IN RIM AREA TO BE INSULATED WITH CLOSED CELL SPRAYED FOAM INSULATION (TYP.)

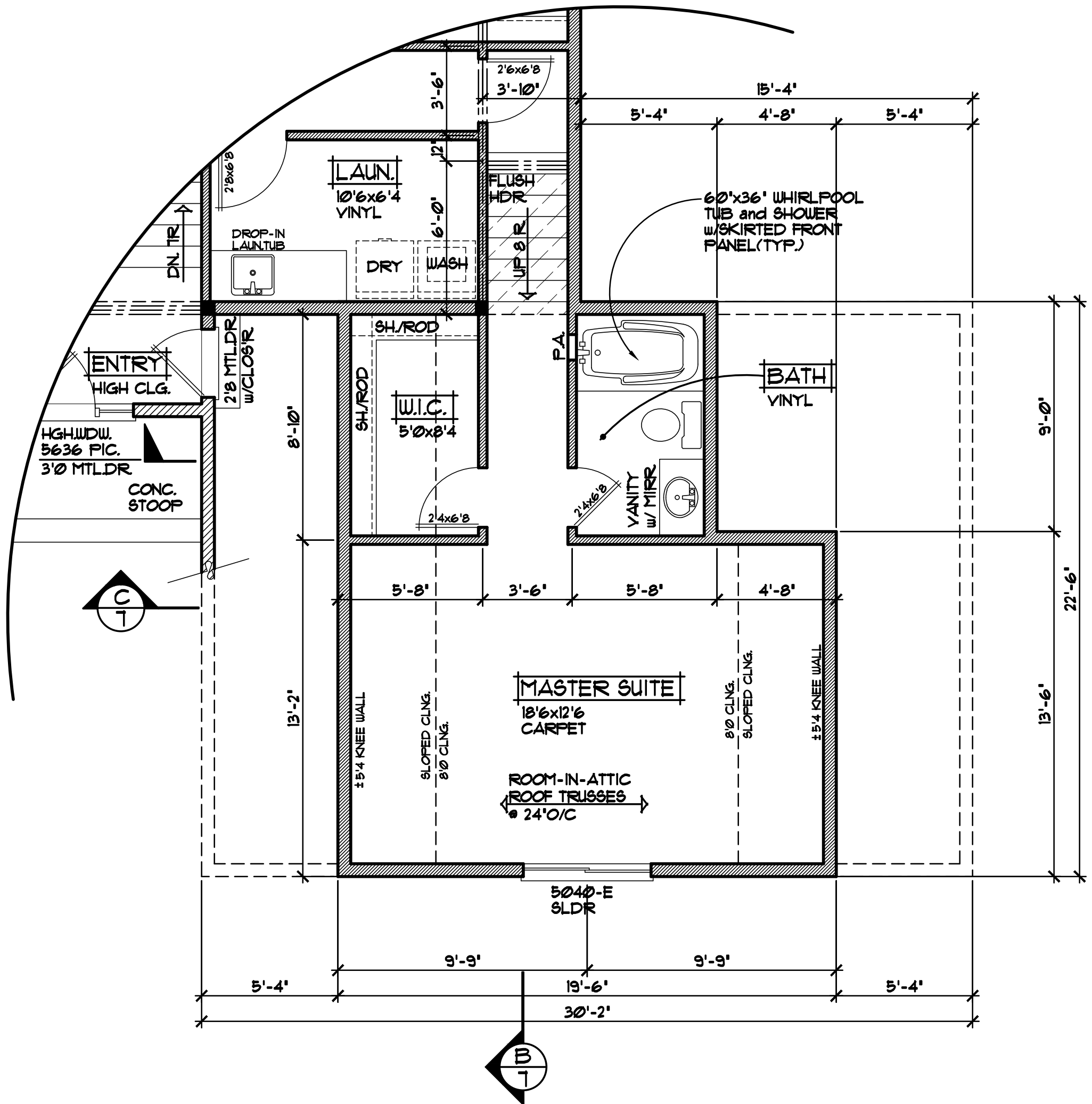
NOTE III  
 8'-1 1/8" PLATE HEIGHT • ENTIRE MAIN LEVEL (UNO.)

**MAIN LEVEL PLAN** 1/4" = 1'-0"  
 980 SQFT. MAIN LEVEL

NOTE III  
 ANDERSEN 100 SERIES WINDOW SIZES SPEC'D VERIFY ALL DOOR AND WINDOW ROUGH OPENINGS WITH SUPPLIER



**BIRD'S EYE ROOF PLAN** 1/8"=1'-0"



**BONUS ROOM PLAN** 1/4"=1'-0"  
392 SQ.FT. BONUS ROOM

NOTE III  
ANDERSEN 100 SERIES WINDOW SIZES  
SPEC'D VERIFY ALL DOOR AND WINDOW  
ROUGH OPENINGS WITH SUPPLIER

REVISIONS
XXXXXX 0000 BY:XX
XXXXXX 0000 BY:XX

**SPECIAL NOTICE:**  
CROIX DESIGN AND DRAFTING, INC. ACCEPTS NO RESPONSIBILITY FOR ERRORS AND/OR OMISSIONS. THESE DRAWINGS ARE DESIGN CONCEPT ONLY. EVERY EFFORT HAS BEEN MADE TO PREPARE THESE DRAWINGS TO THE BEST OF OUR ABILITY. THE CLIENT SHALL BE RESPONSIBLE FOR VERIFYING ALL DIMENSIONS AND SPECIFICATIONS WITH THE SUPPLIER. THE CLIENT SHALL BE RESPONSIBLE FOR ANY CHANGES OR ADJUSTMENTS REQUIRED DURING CONSTRUCTION. NO REPRESENTATION IS MADE OR IMPLIED FOR ACCURACY.

**CROIX DESIGN and DRAFTING, Inc.**  
•PH: (763) 757-5997 • FAX: (763) 757-4383 • ANDOVER, MINNESOTA •

BUILT BY:  
**ELEVATE BUILDERS, LLC**

SHEET  
**5**  
of 7  
CADD FILE #  
142710