

REVISIONS	BY
03011	N.F.
04007	J.R.
04201	C.C.
05059	J.L.
08049	N.F.

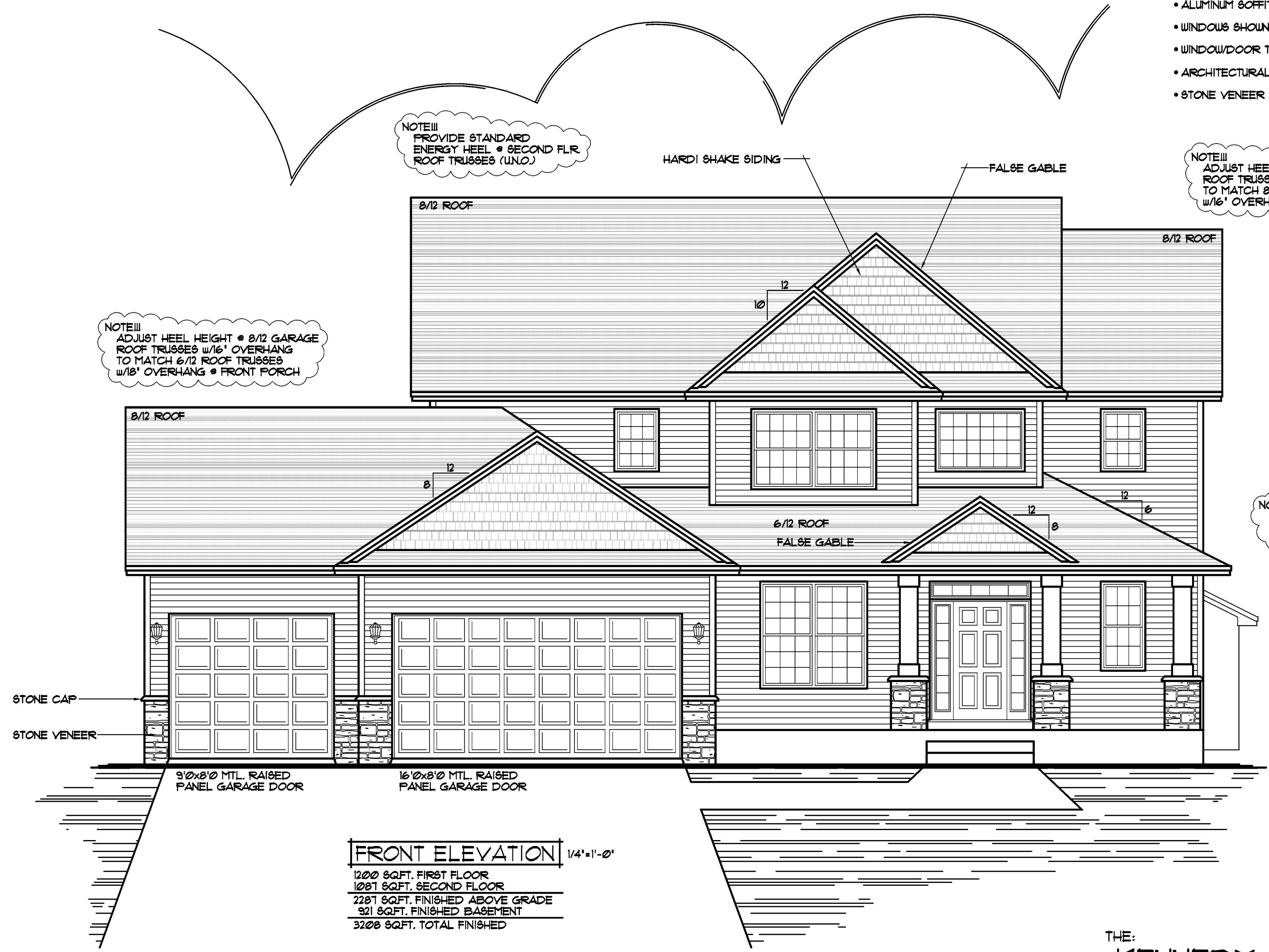
- JELD-WEN WINDOWS SPEC'D.
- HARDI SIDING/SHAKES • FRONT AS SHOWN
- VINYL SIDING/CORNER TRIM • SIDES & REAR
- ALUMINUM SOFFITS & FASCIA
- WINDOWS SHOWN w/OPTIONAL GRIDS
- WINDOW/DOOR TRIM AS SHOWN
- ARCHITECTURAL SHINGLES
- STONE VENEER AS SHOWN

NOTE III
 PROVIDE STANDARD ENERGY HEEL • SECOND FLR ROOF TRUSSES (U.N.O.)

NOTE III
 ADJUST HEEL HEIGHT • 10/12 ROOF TRUSSES w/16" OVERHANG TO MATCH 8/12 ROOF TRUSSES w/16" OVERHANG • 2nd FLOOR

NOTE III
 ADJUST HEEL HEIGHT • 8/12 GARAGE ROOF TRUSSES w/16" OVERHANG TO MATCH 6/12 ROOF TRUSSES w/18" OVERHANG • FRONT PORCH

NOTE III
 9'-1 1/8" PLATE HEIGHT • ENTIRE FIRST FLOOR (TYP.)



FRONT ELEVATION 1/4"=1'-0"
 1200 SQFT. FIRST FLOOR
 1087 SQFT. SECOND FLOOR
 2287 SQFT. FINISHED ABOVE GRADE
 921 SQFT. FINISHED BASEMENT
 3208 SQFT. TOTAL FINISHED

THE:
KENNEDY

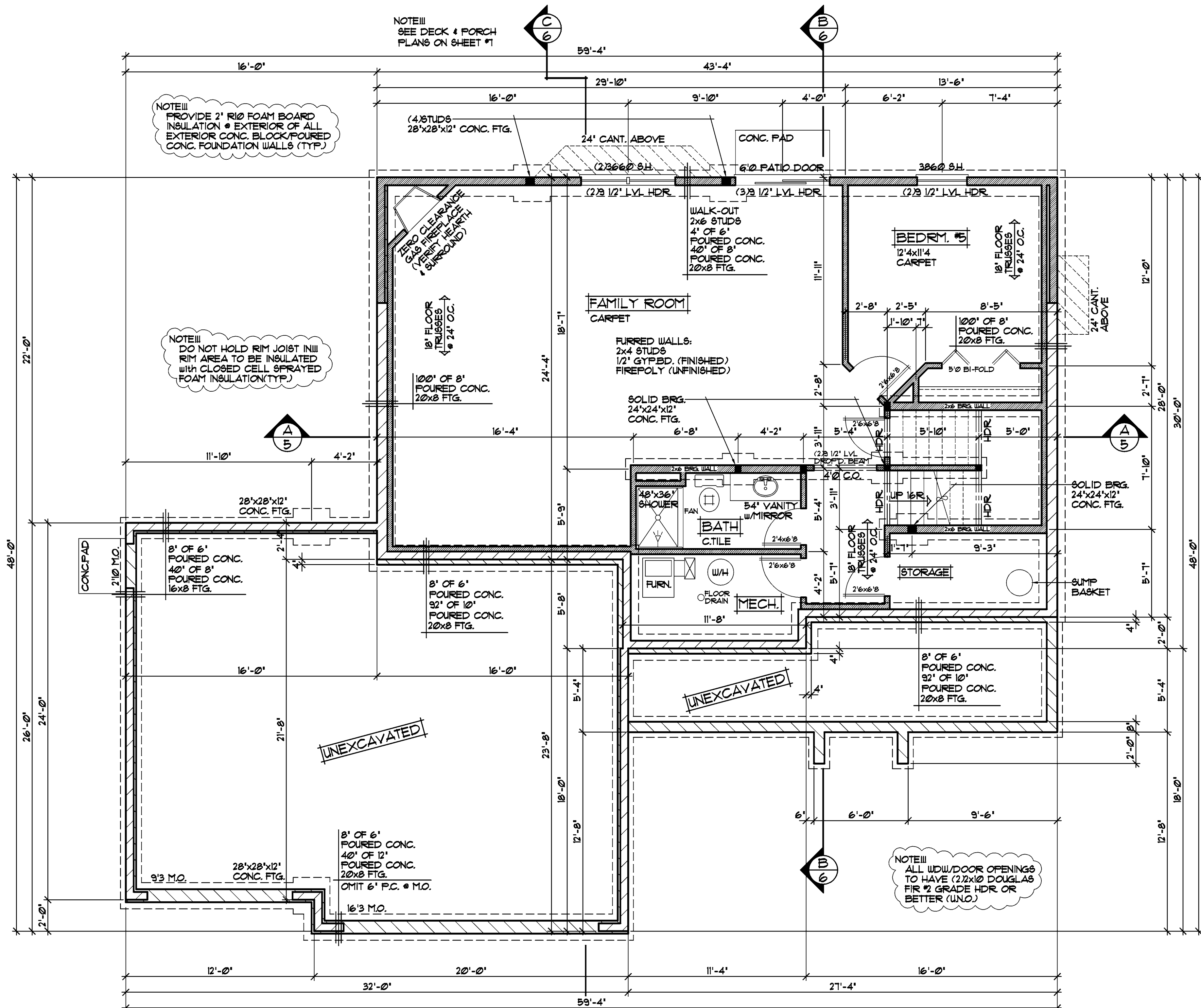
© COPYRIGHT 2000-2013 NOTICE, ALL RIGHTS RESERVED
 CROIX DESIGN and DRAFTING, INC.

SPECIAL NOTICE:
 CROIX DESIGN and DRAFTING, INC. ACCEPTS NO RESPONSIBILITY FOR ERRORS AND/OR OMISSIONS. THESE DRAWINGS ARE DESIGN CONCEPT ONLY. EVERY EFFORT HAS BEEN MADE TO DESIGN ACCURATELY. THE OWNER, GENERAL CONTRACTOR, SUB-CONTRACTORS, AND SUPPLIERS MUST CHECK ALL DETAILS AND DIMENSIONS AND BE RESPONSIBLE FOR ANY CHANGES OR ADJUSTMENTS REQUIRED DURING ACTUAL CONSTRUCTION. NO REPRESENTATION IS MADE OR IMPLIED FOR ACCURACY.
 © COPYRIGHT NOTICE, ALL RIGHTS RESERVED
 THESE ARCHITECTURAL PLANS AND ALL RELATED WORKS ARE PROTECTED BY UNITED STATES COPYRIGHT LAWS, AND MAY NOT BE REPRODUCED, COPIED, OR TRANSMITTED IN ANY MANNER WITHOUT THE WRITTEN PERMISSION OF CROIX DESIGN and DRAFTING, INC.

DESIGN and DRAFTING BY:
CROIX DESIGN and DRAFTING, Inc.
 ARCHITECTURAL DESIGN and DRAFTING SERVICE
 HOME PLAN SERVICE CUSTOM HOMES REMODELING
 PH: (763) 757-5997 FAX: (763) 757-4383
 WWW.CROIXDESIGN.COM

BUILT BY:
ELEVATE BUILDERS, LLC
 P.O. BOX 114
 FOREST LAKE, MN 55025

DRAWN
 N.F.
 CHECKED
 X.X.
 DATE
 5/08/2013
 SCALE
 AS NOTED
 CADD FILE #
 13056



REVISIONS
XXXXXX 0000 BY:XX
XXXXXX 0000 BY:XX

SPECIAL NOTICE:
CROIX DESIGN AND DRAFTING, INC. ACCEPTS NO RESPONSIBILITY FOR ERRORS AND/OR OMISSIONS. THESE DRAWINGS ARE DESIGN CONCEPT ONLY. EVERY EFFORT HAS BEEN MADE TO PREPARE THESE DRAWINGS ACCURATELY. HOWEVER, THE USER SHALL BE RESPONSIBLE FOR VERIFYING ALL DIMENSIONS AND BE RESPONSIBLE FOR ANY CHANGES OR ADJUSTMENTS REQUIRED DURING CONSTRUCTION. NO REPRESENTATION IS MADE OR IMPLIED FOR ACCURACY.

CROIX DESIGN and DRAFTING, Inc.
PH: (763) 757-5997 FAX: (763) 757-4383 ANDOVER, MINNESOTA

BUILT BY:
ELEVATE BUILDERS, LLC

FOUNDATION PLAN 1/4" = 1'-0"
921 SQ.FT. FINISHED

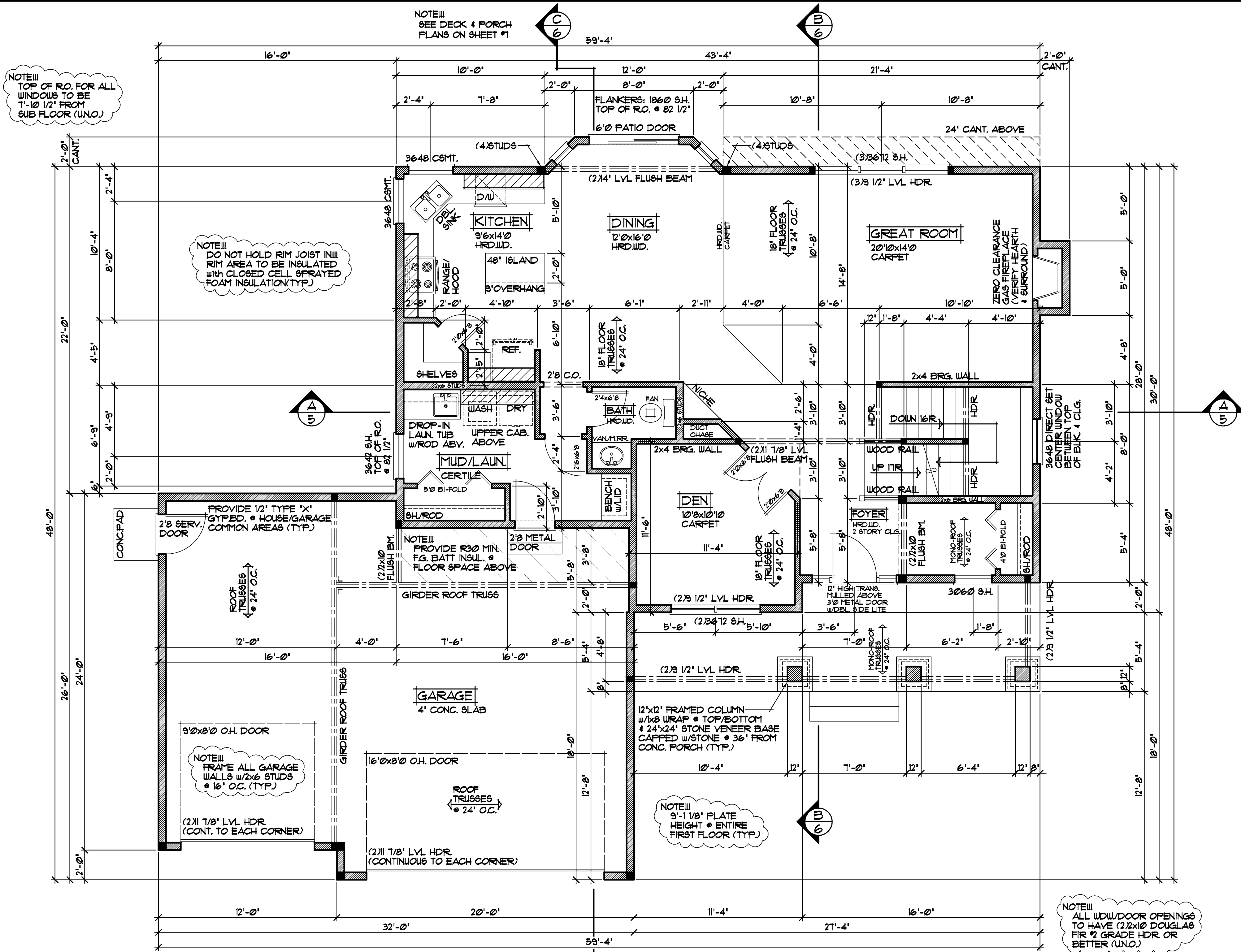
REVISIONS
XXXXXX
0000
BY:XX
XXXXXX
0000
BY:XX

SPECIAL NOTICE:
 CROIX DESIGN AND DRAFTING, INC. ACCEPTS NO RESPONSIBILITY FOR ERRORS AND/OR OMISSIONS IN THESE DRAWINGS. THE DESIGNER'S RESPONSIBILITY IS LIMITED TO THE DESIGN OF THE BUILDING AS SHOWN ON THESE DRAWINGS. THE CONTRACTOR SHALL BE RESPONSIBLE FOR VERIFYING ALL DIMENSIONS AND CONDITIONS ON THE JOB. THE CONTRACTOR SHALL BE RESPONSIBLE FOR OBTAINING ALL NECESSARY PERMITS AND APPROVALS. THE CONTRACTOR SHALL BE RESPONSIBLE FOR VERIFYING ALL DIMENSIONS AND CONDITIONS ON THE JOB. THE CONTRACTOR SHALL BE RESPONSIBLE FOR OBTAINING ALL NECESSARY PERMITS AND APPROVALS. THE CONTRACTOR SHALL BE RESPONSIBLE FOR VERIFYING ALL DIMENSIONS AND CONDITIONS ON THE JOB. THE CONTRACTOR SHALL BE RESPONSIBLE FOR OBTAINING ALL NECESSARY PERMITS AND APPROVALS.

CROIX DESIGN and DRAFTING, Inc.
 •PH: (763) 757-5997 •FAX: (763) 757-4383 ANDOVER, MINNESOTA

ELEVATE BUILDERS, LLC
 BUILT BY:

SHEET
3
 OF 7
 CADD FILE #
 13056



FIRST FLOOR PLAN 1/4" = 1'-0"
 1200 SQFT.

REVISIONS
XXXXXX
0000
BY:XX
XXXXXX
0000
BY:XX

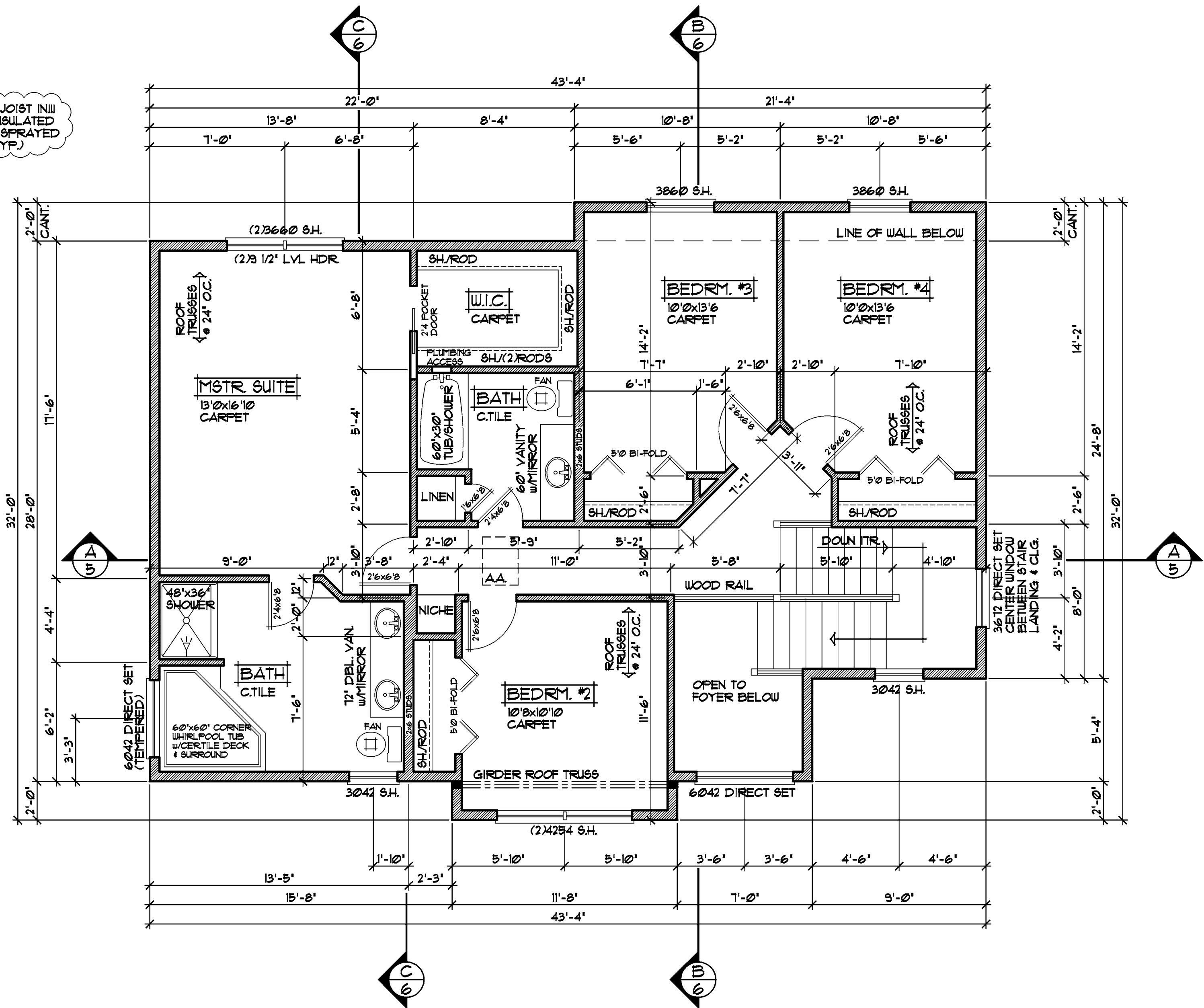
SPECIAL NOTICE:
 CROIX DESIGN AND DRAFTING, INC. ACCEPTS NO RESPONSIBILITY FOR ERRORS AND/OR OMISSIONS. THESE DRAWINGS ARE DESIGN CONCEPT ONLY. EVERY EFFORT HAS BEEN MADE TO PREPARE THESE DRAWINGS ACCURATELY. HOWEVER, THE USER SHALL VERIFY ALL DIMENSIONS AND CONDITIONS ON THE FIELD. THE USER SHALL BE RESPONSIBLE FOR ANY CHANGES OR ADJUSTMENTS REQUIRED DURING CONSTRUCTION. NO REPRESENTATION IS MADE OR IMPLIED FOR ACCURACY.

CROIX DESIGN and DRAFTING, Inc.
 •PH:(763) 757-5997 •FAX:(763) 757-4383 ANDOVER, MINNESOTA

BUILT BY:
ELEVATE BUILDERS, LLC

SHEET
4
 OF 7
 CADD FILE #
 13056

NOTE III
 DO NOT HOLD RIM JOIST IN!!!
 RIM AREA TO BE INSULATED
 WITH CLOSED CELL SPRAYED
 FOAM INSULATION(TYP.)



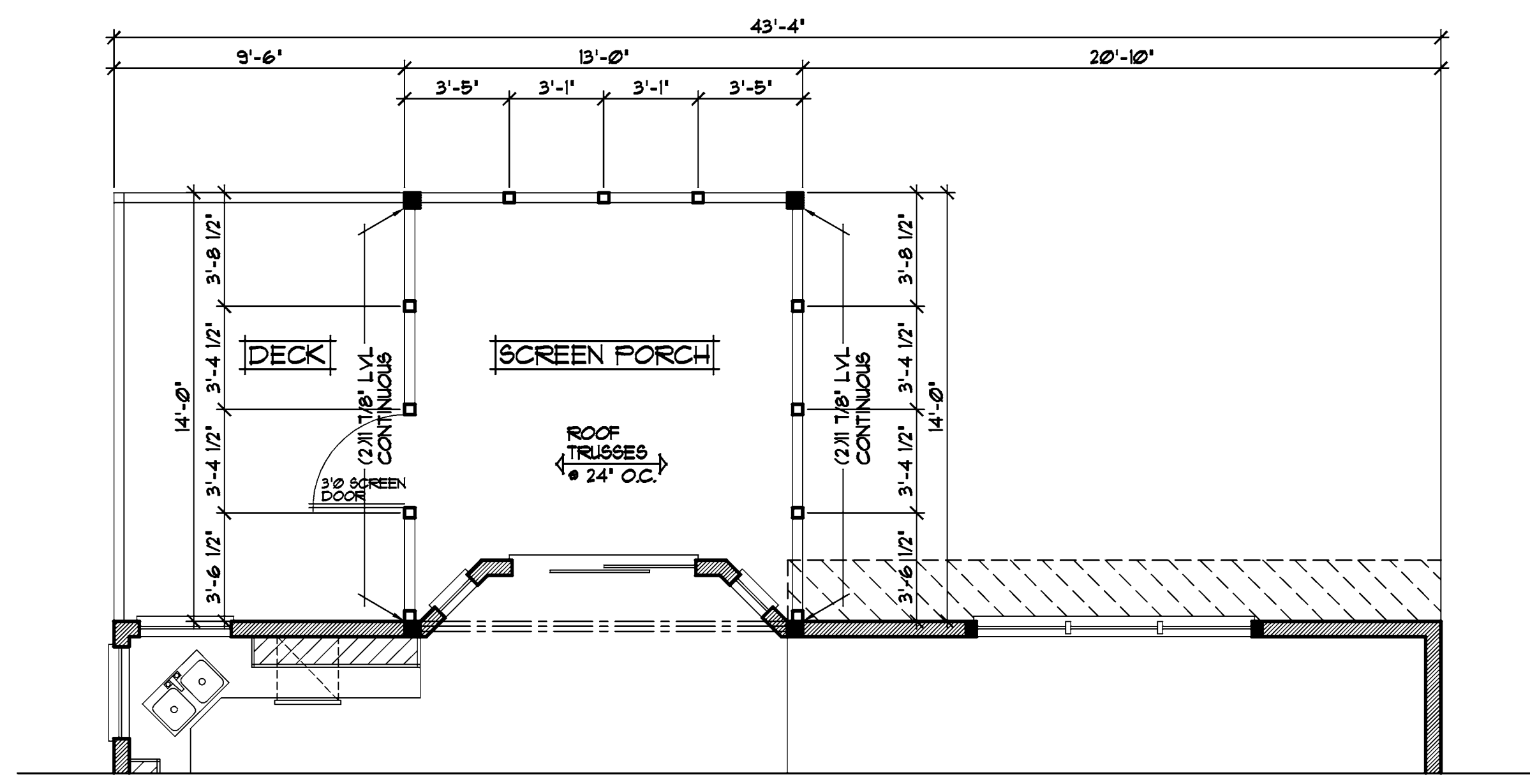
SECOND FLOOR PLAN 1/4"=1'-0"
 1081 SQFT.
 144 SQFT. STAIR/OPEN AREA NOT INCLUDED

NOTE III
 JELD-WEN WINDOWS SPECIFIED
 VERIFY ALL DOOR AND WINDOW
 ROUGH OPENINGS WITH SUPPLIER

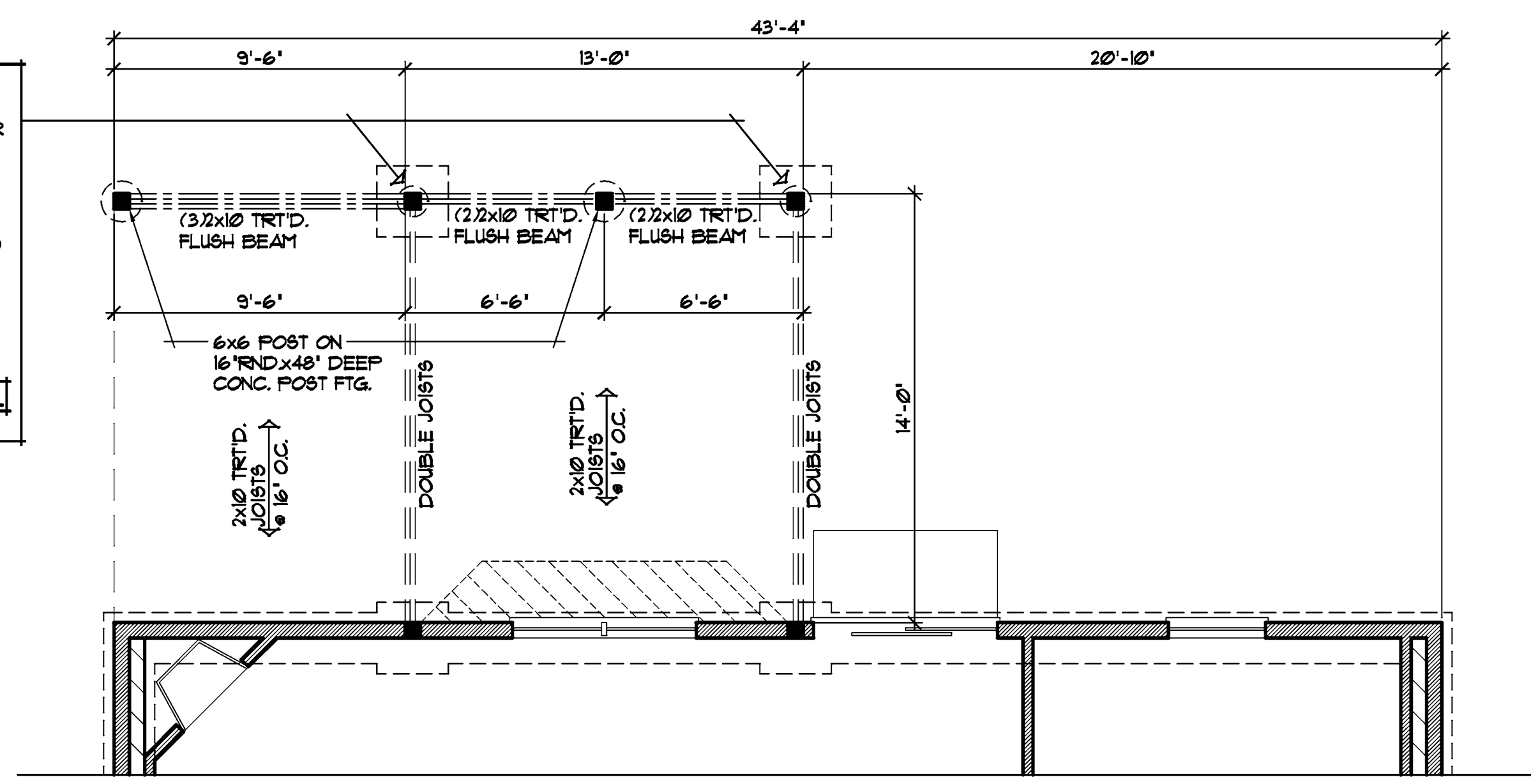
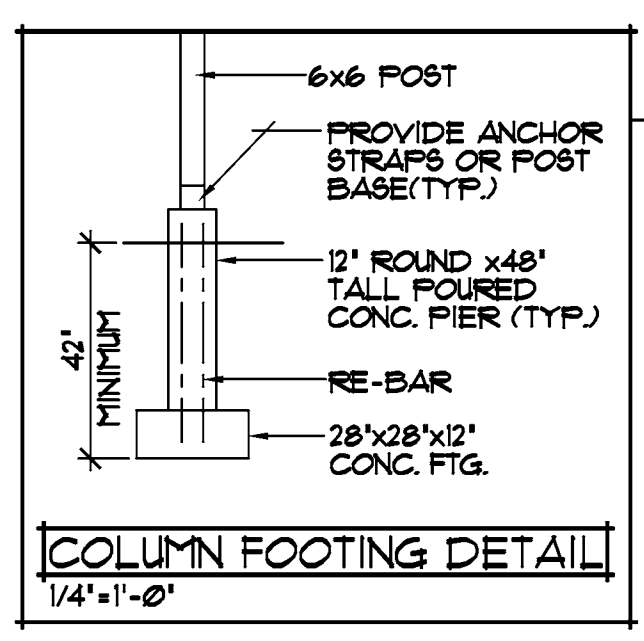
NOTE III
 ALL WDW/DOOR OPENINGS
 TO HAVE (2)2"x10" DOUGLAS
 FIR #2 GRADE HDR OR
 BETTER (UNO.)

REVISIONS	
XXXXXX	
0000	BY:XX
XXXXXX	
0000	BY:XX

SPECIAL NOTICE:
 CROIX DESIGN AND DRAFTING, INC. ACCEPTS NO RESPONSIBILITY FOR ERRORS AND/OR OMISSIONS. THESE DRAWINGS ARE DESIGN CONCEPT ONLY. EVERY EFFORT HAS BEEN MADE TO PREVENT ERRORS, BUT THE USER MUST VERIFY ALL DIMENSIONS, MATERIALS, AND CONDITIONS ON THE JOB. THE USER IS RESPONSIBLE FOR ANY CHANGES OR ADJUSTMENTS REQUIRED DURING CONSTRUCTION. NO REPRESENTATION IS MADE OR IMPLIED FOR ACCURACY.



DECK & SCREEN PORCH PLAN 1/4"=1'-0"



DECK & SCREEN PORCH FOOTING & FRAMING PLAN 1/4"=1'-0"

CROIX DESIGN and DRAFTING, Inc.
 •PH:(763) 757-5997 FAX:(763) 757-4383 ANDOVER, MINNESOTA

BUILT BY:
ELEVATE BUILDERS, LLC

SHEET
 7
 OF 7
 CADD FILE #
 13056