

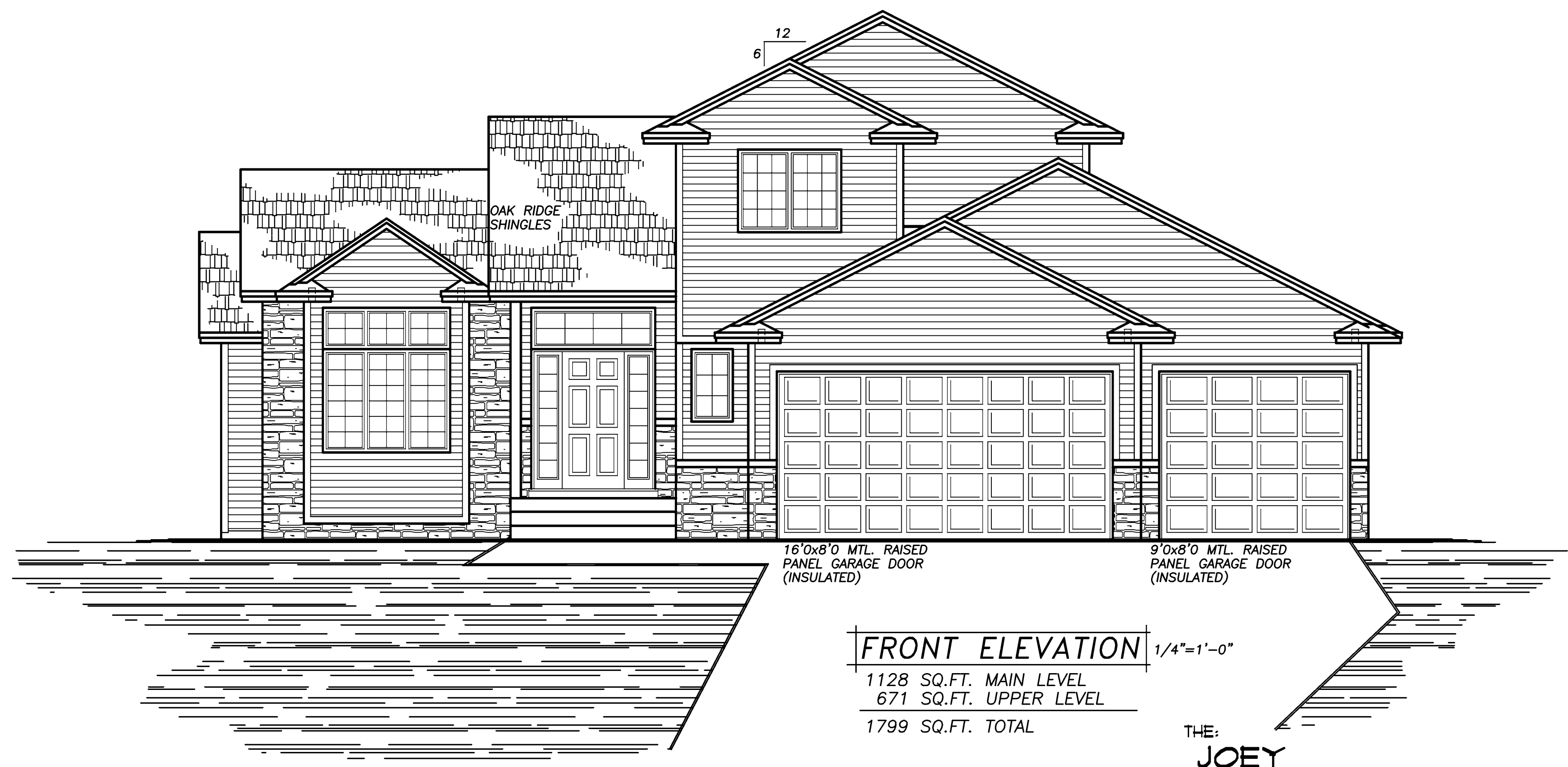
REVISIONS:	BY
95112	R.M.
01189	R.M.
02281	R.M.

NOTE!!!
10'-1 1/8" PLATE
HGT. AT GREAT RM.
ONLY.

NOTE!!!
HOLD FLOOR TRUSSES IN
FOR 1 1/2" R10 THERMAX
FOAM BD. INSUL. + SHTH'G. AT
ENTIRE PERIMETER @ RIM AREA(TYP.)
(SEE DETAIL SHT . #5)

SPECIAL NOTICE:
CROIX CUSTOM CONCEPTS ACCEPTS NO RESPONSIBILITY FOR ERRORS OR OMISSIONS. THESE DRAWINGS ARE DESIGN CONCEPT ONLY. EVERY EFFORT HAS BEEN MADE DESIGNING AND PREPARING THESE PLANS AND CHECKING THEM FOR ACCURACY. THE OWNER, SUPPLIERS, AND SUB-CONTRACTORS MUST CHECK ALL DETAILS AND DIMENSIONS AND BE RESPONSIBLE FOR ANY CHANGES OR ADJUSTMENTS REQUIRED DURING ACTUAL CONSTRUCTION. NO REPRESENTATION IS MADE OR IMPLIED FOR ACCURACY.

- CRESTLINE VINYLCREST WINDOWS SPEC'D.
- VINYL SIDING
- ALUMINUM SOFFITS/FASCIA

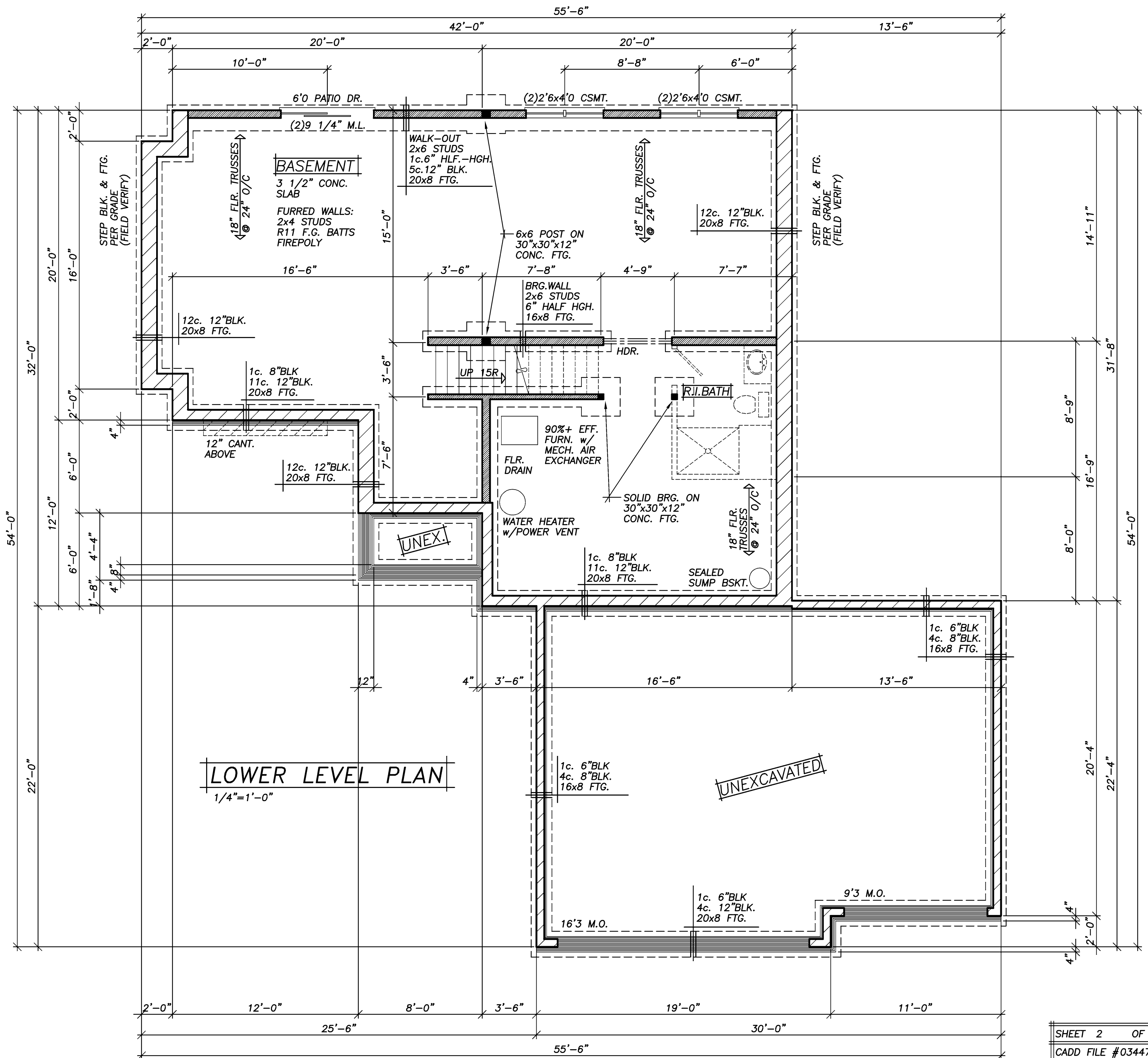


CROIX CUSTOM CONCEPTS
DESIGN & DRAFTING
14115 Lincoln Street N.E., Suite 400
Ham Lake, MN, 55304
PH:(763)-323-0411 FAX:(763)-323-8680

NEW HOUSE BUILT BY:
ELEVATE BUILDERS, LLC
P.O. BOX 114
FOREST LAKE, MN 55025

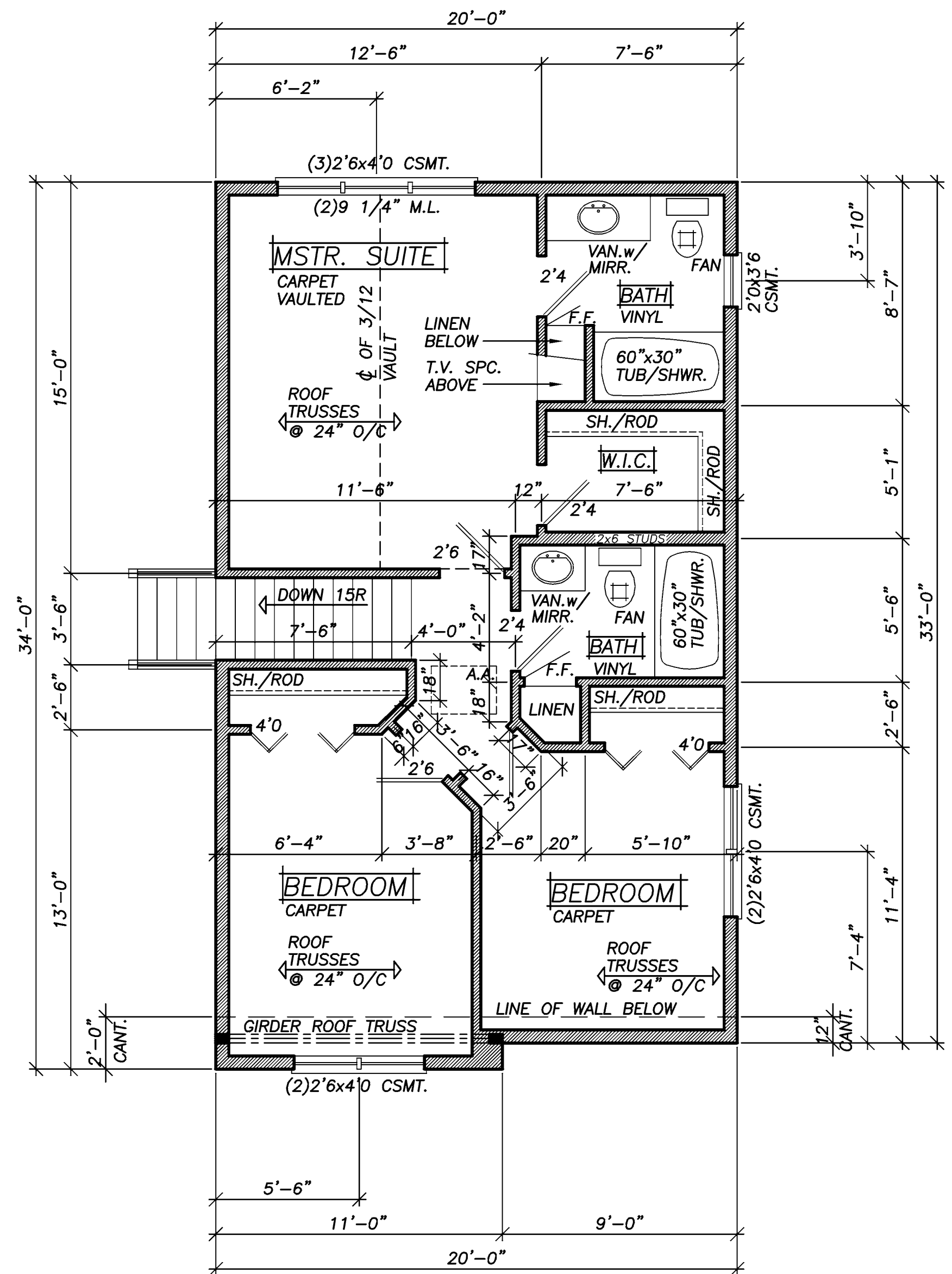
DRAWN	J.R.
CHECKED	
DATE	12-09-03
SCALE	AS NOTED
JOB NO.	
CADD FILE NO.	03447
SHEET	1
OF 5 SHEETS	

©2003 COPYRIGHT, CROIX CUSTOM CONCEPTS, INC.
THIS NEW HOME PLAN MAY BE USED TO CONSTRUCT (1)ONE NEW BUILDING. EACH ADDITIONAL NEW BUILDING WILL BE REQUIRED TO PURCHASE A RE-USE LICENSE.



NOTE!!!
HOLD FLOOR TRUSSES IN FOR 1 1/2" R10 THERMAX FOAM BD. INSUL. + SHTH'G. AT ENTIRE PERIMETER @ RIM AREA(TYP.) (SEE DETAIL SHT. #5)

ALL HEIGHT CALCULATIONS FOR FOUNDATIONS ARE BASED ON THE USE OF FULL 8" HIGH BLOCK w/ 3/8" JOINTS. IF MODULAR BLOCK IS USED, CONTRACTORS SHOULD ADJUST HEIGHTS ACCORDINGLY.



NOTE!!!
 HOLD FLOOR TRUSSES IN
 FOR 1 1/2" R10 THERMAX
 FOAM BD. INSUL. + SHTH'G. AT
 ENTIRE PERIMETER @ RIM AREA(TYP.)
 (SEE DETAIL SHT . #5)

UPPER LEVEL PLAN 1/4"=1'-0"
 671 SQ.FT.