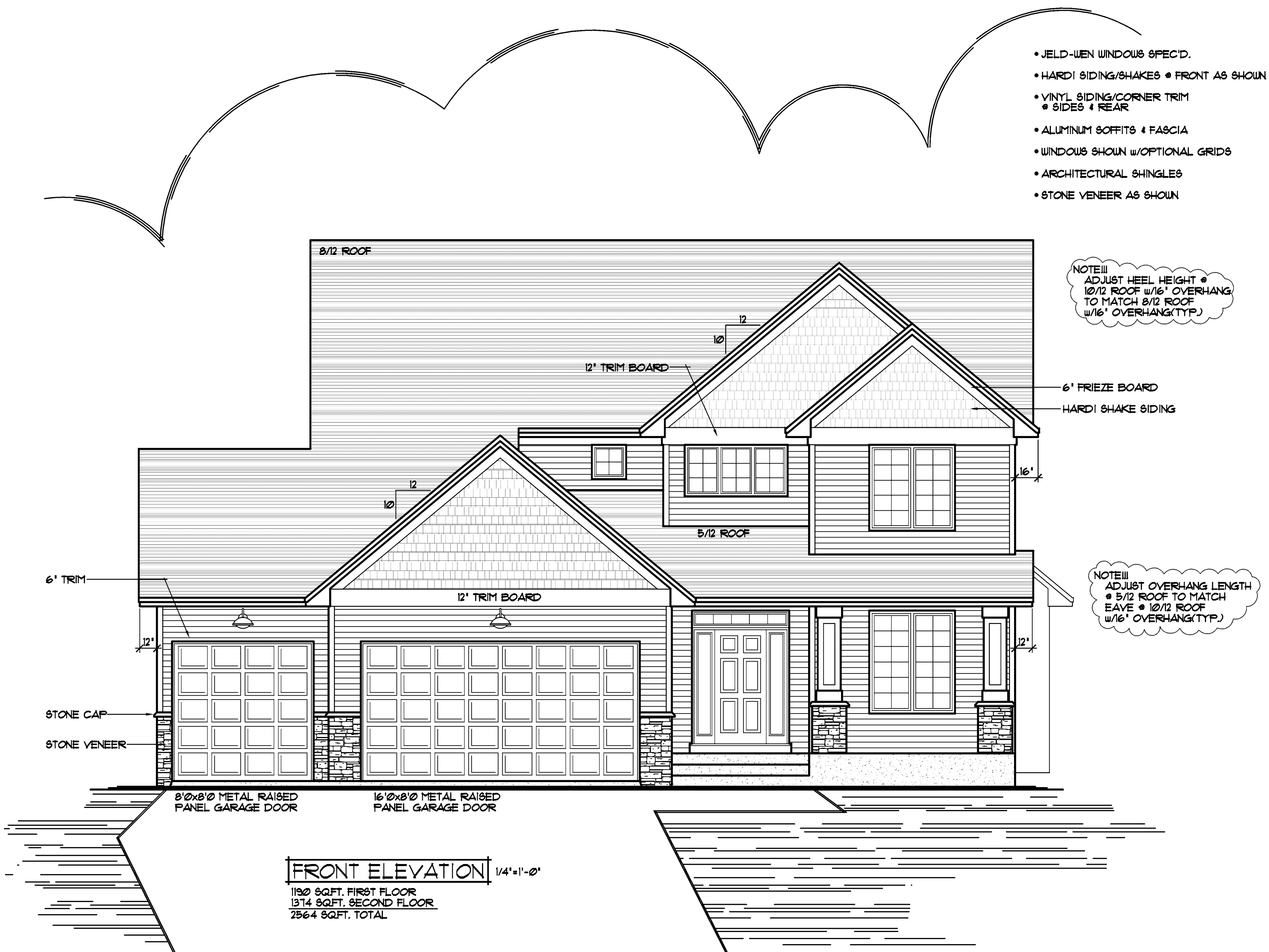


REVISIONS	BY
07060	RM.

SPECIAL NOTICE:
CROIX DESIGN and DRAFTING, INC. ACCEPTS NO RESPONSIBILITY FOR ERRORS AND/OR OMISSIONS. THESE DRAWINGS ARE DESIGN CONCEPT ONLY. EVERY EFFORT HAS BEEN MADE DESIGNING TO MEET THE INTENT OF THE CLIENT. CONTRACTORS MUST CHECK ALL DETAILS AND DIMENSIONS REQUIRED DURING ACTUAL CONSTRUCTION. NO REPRESENTATION IS MADE OR IMPLIED FOR ACCURACY.

COPYRIGHT NOTICE, ALL RIGHTS RESERVED
THESE ARCHITECTURAL PLANS AND ALL RELATED WORKS ARE PROTECTED BY UNITED STATES COPYRIGHT LAWS, AND MAY NOT BE REPRODUCED, COPIED, OR TRANSMITTED IN ANY MANNER WITHOUT THE EXPRESS WRITTEN PERMISSION OF CROIX DESIGN and DRAFTING, INC. CROIX DESIGN and DRAFTING, INC.



- JELD-WEN WINDOWS SPEC'D.
- HARDI SIDING/SHAKES • FRONT AS SHOWN
- VINYL SIDING/CORNER TRIM • SIDES & REAR
- ALUMINUM SOFFITS & FASCIA
- WINDOWS SHOWN w/OPTIONAL GRIDS
- ARCHITECTURAL SHINGLES
- STONE VENEER AS SHOWN

NOTE III
ADJUST HEEL HEIGHT •
10/12 ROOF w/16' OVERHANG
TO MATCH 8/12 ROOF
w/16' OVERHANG(TYP.)

NOTE III
ADJUST OVERHANG LENGTH
• 5/12 ROOF TO MATCH
EAVE • 10/12 ROOF
w/16' OVERHANG(TYP.)

FRONT ELEVATION 1/4"=1'-0"

1190 SQFT. FIRST FLOOR
1374 SQFT. SECOND FLOOR
2564 SQFT. TOTAL

THE:
JAKE

© COPYRIGHT 2001-2013 NOTICE, ALL RIGHTS RESERVED
CROIX DESIGN and DRAFTING, INC.

DESIGN and DRAFTING BY:

CROIX DESIGN and DRAFTING, Inc.

ARCHITECTURAL DESIGN and DRAFTING SERVICE
HOME PLAN SERVICE CUSTOM HOMES REMODELING

PH: (763) 757-5997 FAX: (763) 757-4383
WWW.CROIXDESIGN.COM

BUILT BY:

ELEVATE BUILDERS, LLC

P.O. BOX 114
FOREST LAKE, MN 55025

DRAWN	DR
CHECKED	XX
DATE	5/08/2013
SCALE	AS NOTED
CADD FILE #	13055
SHEET	1 of 7

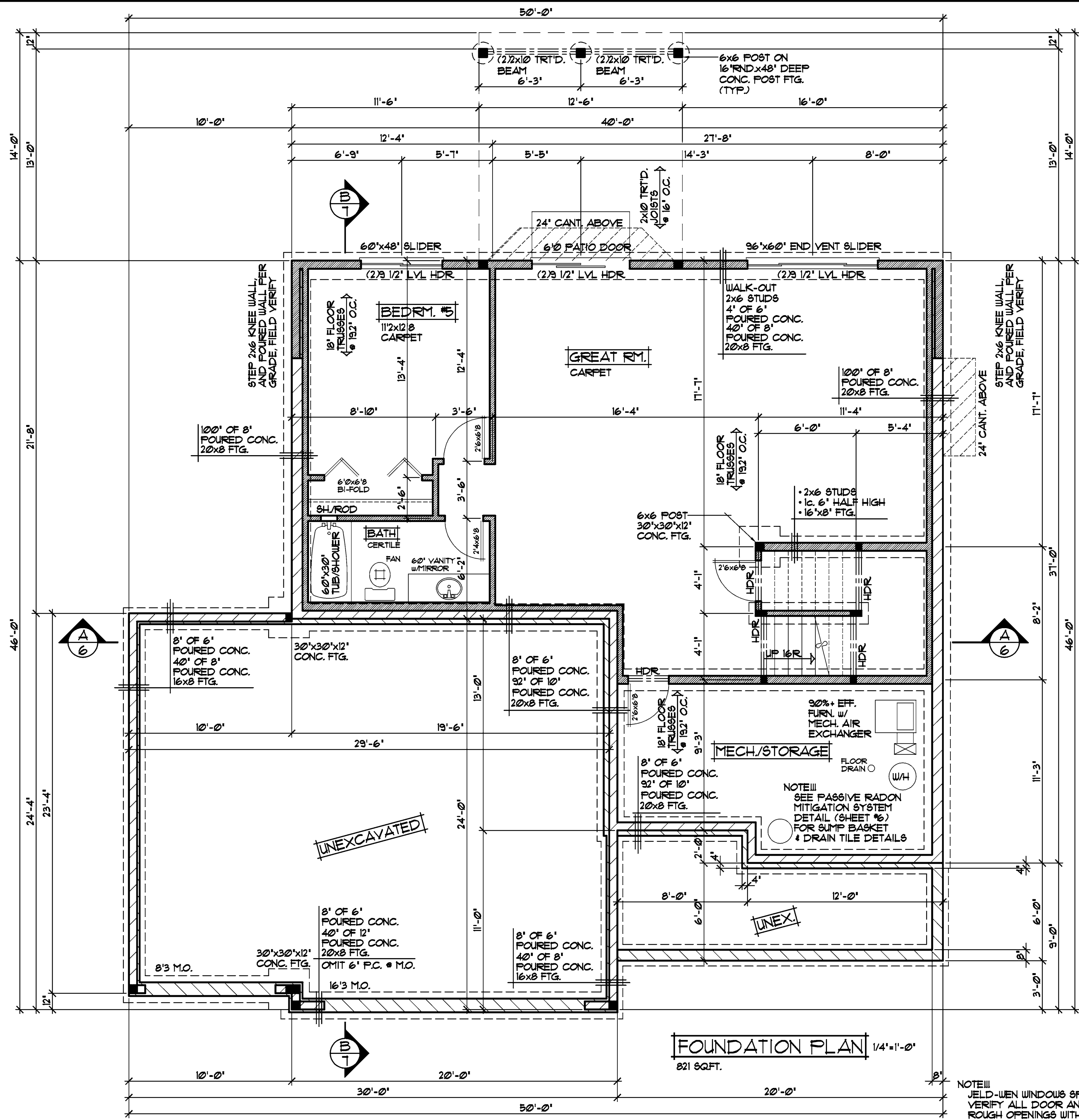
REVISIONS
XXXXXX 0000 BY:XX
XXXXXX 0000 BY:XX

SPECIAL NOTICE:
CROIX DESIGN AND DRAFTING, INC. ACCEPTS NO RESPONSIBILITY FOR ERRORS AND/OR OMISSIONS IN THESE DRAWINGS. EVERY EFFORT HAS BEEN MADE TO PREVENT SUCH ERRORS AND OMISSIONS. HOWEVER, THE USER OF THESE DRAWINGS SHALL BE RESPONSIBLE FOR VERIFYING ALL DIMENSIONS AND REQUIREMENTS REQUIRED DURING CONSTRUCTION. NO REPRESENTATION IS MADE OR IMPLIED FOR ACCURACY.

CROIX DESIGN and DRAFTING, Inc.
PH: (763) 757-5997 FAX: (763) 757-4383 ANDOVER, MINNESOTA

ELEVATE BUILDERS, LLC
BUILT BY:

SHEET
3
OF 7
CADD FILE #
13055



NOTE III
VERIFY ALL MECHANICAL
EQUIPMENT LOCATIONS.
LOCATIONS ON PLAN ARE
REPRESENTATION ONLY

NOTE III
ALL WDW/DOOR OPENINGS
TO HAVE (2)2x10 #2 GRADE
HDR. or BETTER (UNO.)

NOTE III
POURED CONC. WALL FOUNDATION,
VERIFY WALL DIMENSIONS
w/ FOUNDATION CONTRACTOR

FOUNDATION PLAN 1/4"=1'-0"
821 SQFT.

NOTE III
JELD-WEN WINDOWS SPECIFIED
VERIFY ALL DOOR AND WINDOW
ROUGH OPENINGS WITH SUPPLIER

