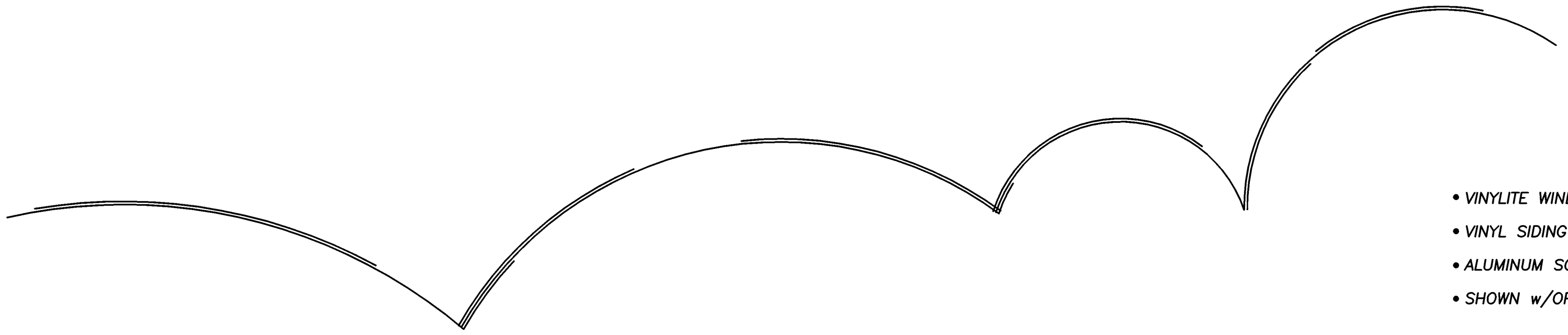
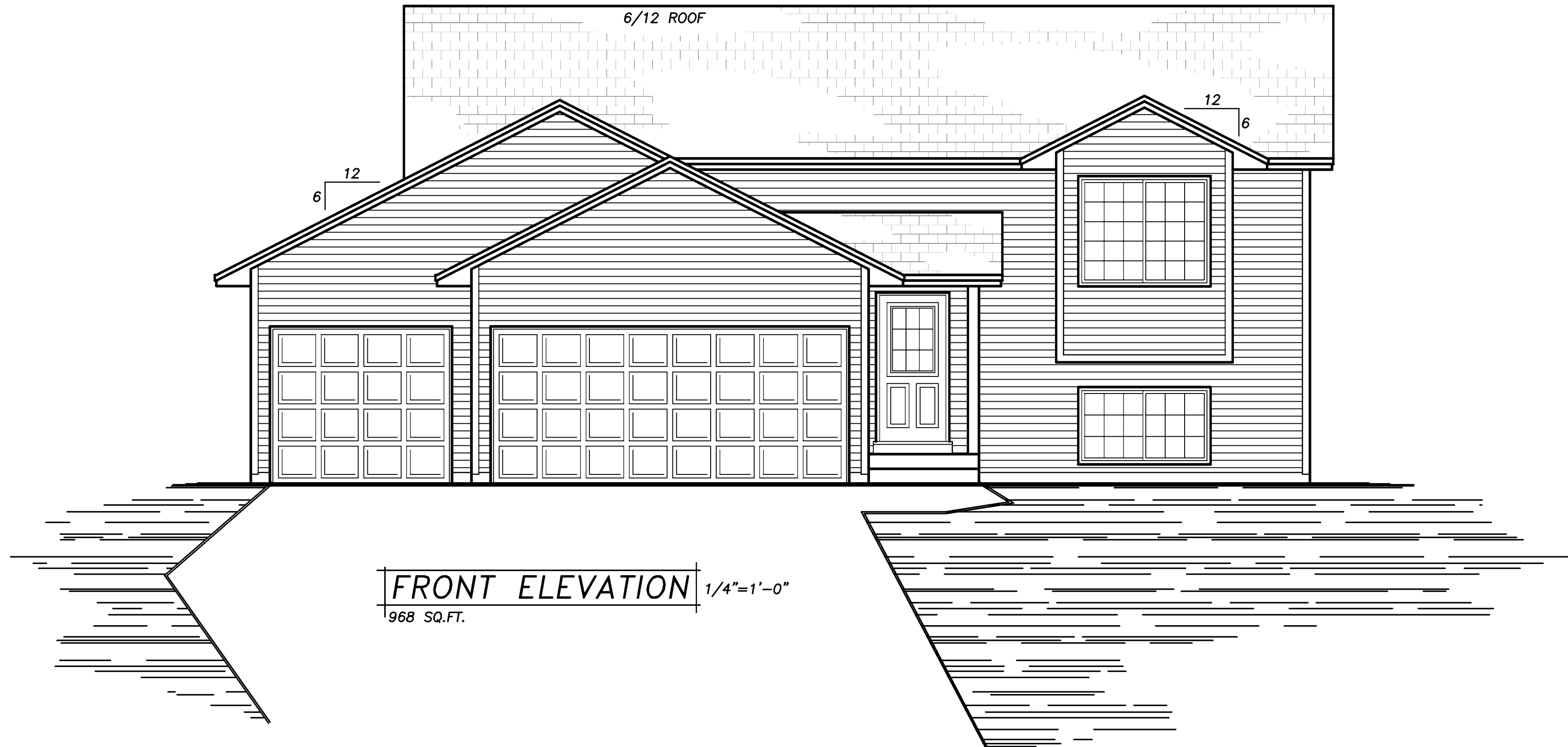


REVISIONS:	BY
01243	R.M.
05104	B.M.

NOTE!!!
 HOLD FLOOR TRUSSES IN
 FOR 1 1/2" R10 THERMAX
 FOAM BD. INSUL. + SHTH'G. AT
 ENTIRE PERIMETER @ RIM AREA(TYP.)
 (SEE DETAIL SHT. #4)



- VINYLITE WINDOWS SPEC'D
- VINYL SIDING
- ALUMINUM SOFFITS/FASCIA
- SHOWN w/OPTIONAL WINDOW GRIDS



SPECIAL NOTICE:
 CROIX CUSTOM CONCEPTS ACCEPTS NO RESPONSIBILITY FOR ERRORS OR OMISSIONS. THESE DRAWINGS ARE DESIGN CONCEPT ONLY. EVERY EFFORT HAS BEEN MADE DESIGNING AND PREPARING THESE PLANS AND CHECKING THEM FOR ACCURACY. THE OWNER, SUPPLIERS, AND SUB CONTRACTORS MUST CHECK ALL DETAILS AND DIMENSIONS AND BE RESPONSIBLE FOR ANY CHANGES OR ADJUSTMENTS REQUIRED DURING ACTUAL CONSTRUCTION. NO REPRESENTATION IS MADE OR IMPLIED FOR ACCURACY.

DESIGN and DRAFTING BY:

CROIX CUSTOM CONCEPTS
 INCORPORATED

- RESIDENTIAL DESIGN & DRAFTING •
- HOME PLAN SERVICE •

14115 Lincoln Street N.E. Suite 400
 Elk River, MN 55304
 PH: (763) 323 8411 FAX: (763) 323 8660
 TOLL FREE: (866) 323 8411

BUILT BY:

ELEVATE BUILDERS, LLC

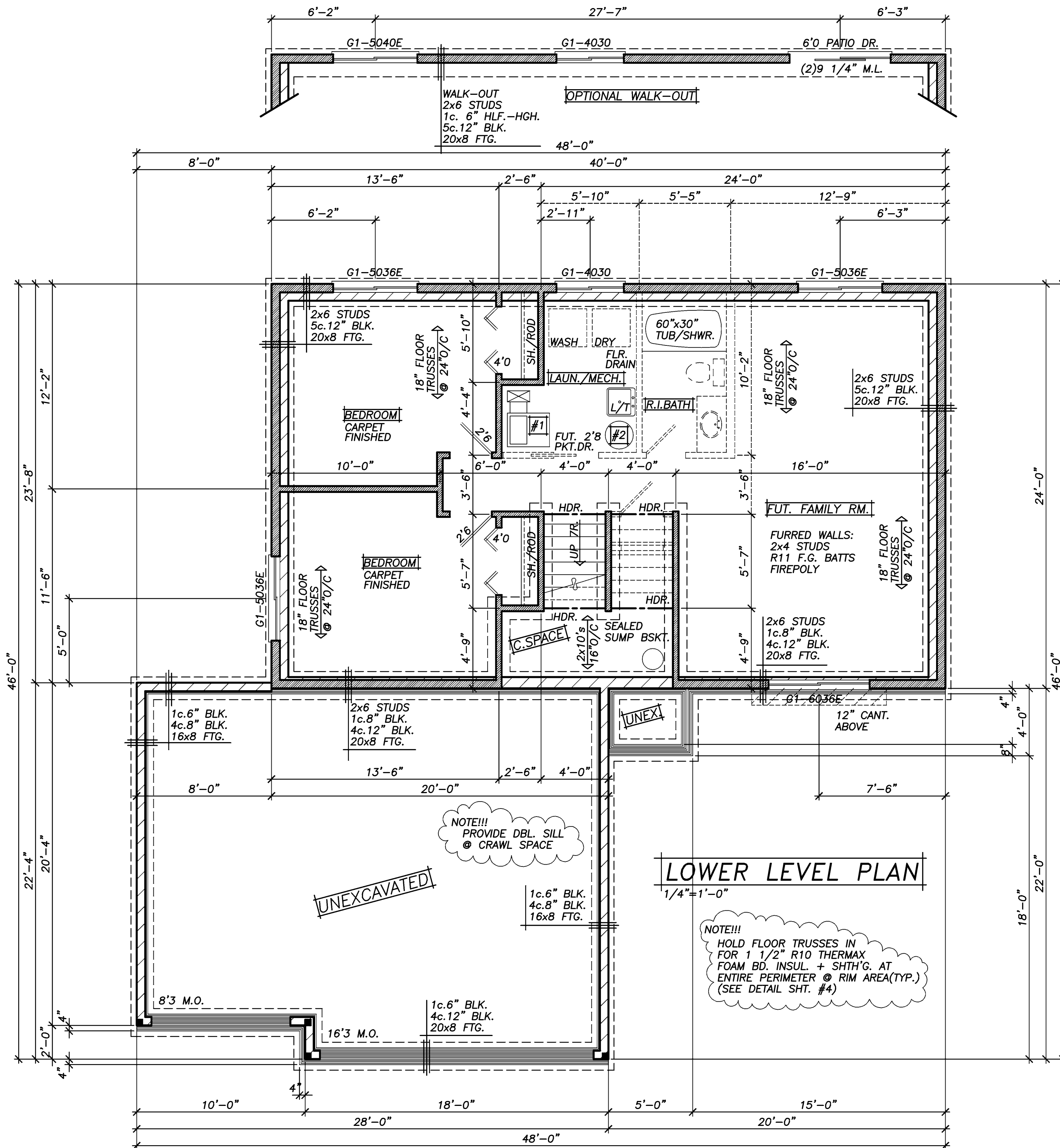
P.O. BOX 114
 FOREST LAKE, MN 55025

DRAWN	N.F.
CHECKED	--
DATE	4/12/2005
SCALE	AS NOTED
JOB NUMBER	
CADD FILE NUMBER	05165
SHEET NUMBER	1

THE:
AMBER

© COPYRIGHT 2005, CROIX CUSTOM CONCEPTS, INC.

THIS NEW HOME PLAN MAY BE USED TO CONSTRUCT (1) ONE NEW BUILDING. EACH ADDITIONAL NEW BUILDING WILL BE REQUIRED TO PURCHASE A RE-USE LICENSE.



LOWER LEVEL PLAN
1/4" = 1'-0"

NOTE!!!
PROVIDE DBL. SILL
@ CRAWL SPACE

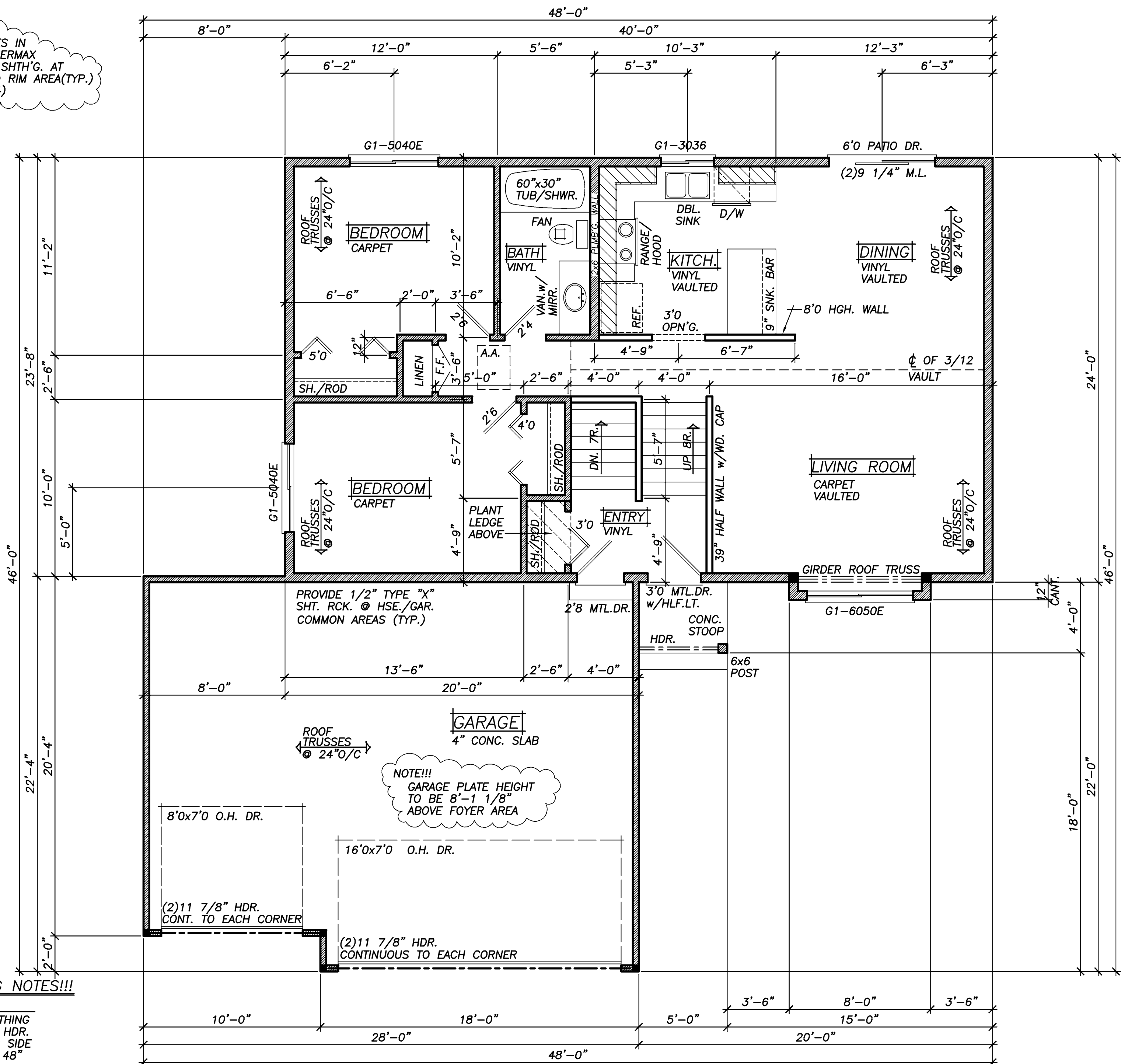
NOTE!!!
HOLD FLOOR TRUSSES IN
FOR 1 1/2" R10 THERMAX
FOAM BD. INSUL. + SHTH'G. AT
ENTIRE PERIMETER @ RIM AREA(TYP.)
(SEE DETAIL SHT. #4)

UTILITY NOTES!!!

- #1 90%+ EFF. FURN.
w/MECH. AIR EXCHNG'R
- #2 WATER HEATER
w/POWER VENT

NOTE!!!
VINYLITE WINDOWS
SPEC'D. VERIFY ALL
R.O.'s w/SUPPLIER

NOTE!!!
HOLD FLOOR TRUSSES IN FOR 1 1/2" R10 THERMAX FOAM BD. INSUL. + SHTH'G. AT ENTIRE PERIMETER @ RIM AREA(TYP.) (SEE DETAIL SHT. #4)



NOTE!!!
GARAGE PLATE HEIGHT TO BE 8'-1 1/8" ABOVE FOYER AREA

GARAGE WALL/DOOR OPENING NOTES!!!

- **EXTERIOR WALL NOTES**
CONTINUOUS OSB OR PLYWOOD SHEATHING FASTENED w/8d NAILS @ 3" O.C. AT HDR. AND STUDS (2 STUD MIN.) AT EITHER SIDE OF DOOR OPENING-WRAP SHEATHING 48" AROUND CORNERS(TYP.)
- **INTERIOR WALL NOTES**
PROVIDE 1000 LB.(MIN.) METAL STRAP FROM HDR. TO STUDS (2 STUD MIN.) AT EITHER SIDE OF DOOR OPENING
- FOR ADDITIONAL DETAILS REFER TO APA NARROW WALL BRACING METHOD (SEE ATTACHED)

MAIN LEVEL PLAN 1/4"=1'-0"
968 SQ.FT.

NOTE!!!
VINYLITE WINDOWS SPEC'D. VERIFY ALL R.O.'s w/SUPPLIER